



Transform UMSL/Academic Core Project Status

This status report is updated monthly by the UMSL
Facilities Team

*Questions and Feedback can be shared by filling out
a Feedback Form located at <http://umsl.edu/transform/>*

ARPA Program Schedule

KEY

Current Date

Construction Start

Go Live

Early Construction Package

Optometry to PCC

✓

JCP North Renovation

Music and Fine Arts to AAB

SSB Modernization and Expansion

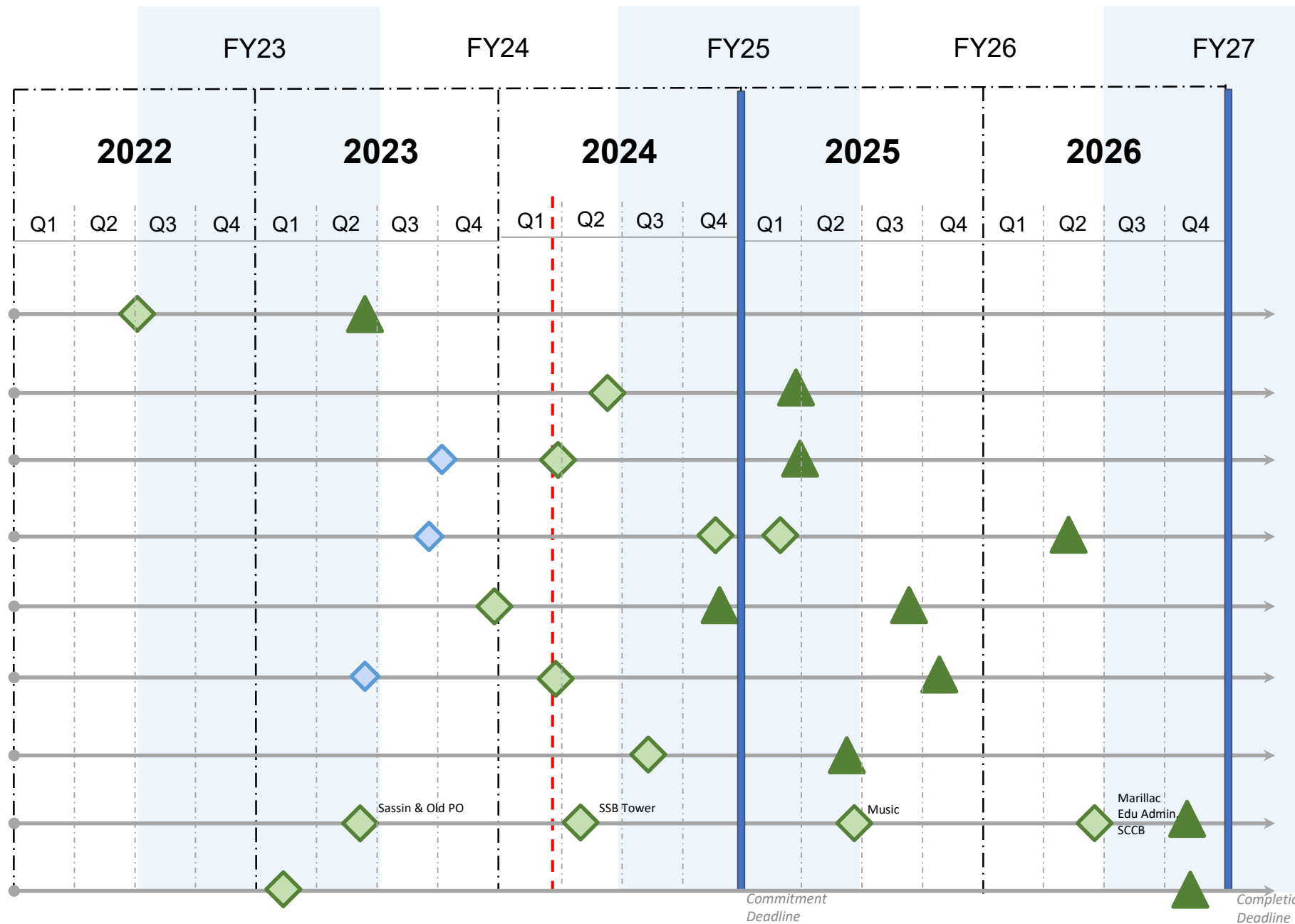
Library Renovation

Richter Family Welcome and Alumni Center

Accelerate Consolidation

Demo Buildings

Capital M&R Infrastructure/Misc. Projects



Optometry to PCC

Project Scope:

- Build out shell space on the 2nd floor of the Patient Care Center (PCC) for the College of Optometry

KEY HIGHLIGHTS AND UPDATES
Construction substantially complete
Mechanical installed complete



Renovate

1 Patient Care Center (PCC)

Item	Description	Start	End
1	Design	Complete	Complete
2	Construction	Complete	Complete

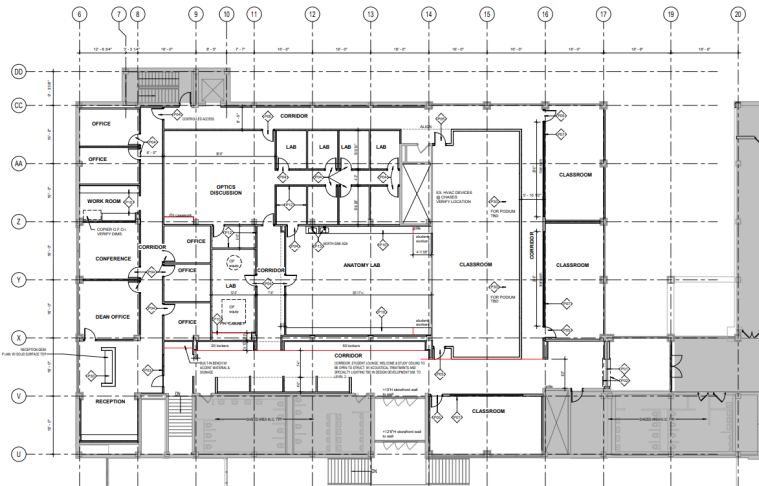
*Updated as of 4/2/24

JCP North Renovation

Project Scope:

- Relocation of the College of Optometry from Marillac Hall to the J.C. Penney North Building. This includes renovations to provide faculty and staff offices, classrooms, study and breakout rooms, labs, and research space.

KEY HIGHLIGHTS AND UPDATES
Schematic design complete
Design development in progress
Anchor Mission
Project architect is within UMSL's Anchor Mission Footprint



Renovate

1 JCP North

Item	Description	Start	End
1	Design	Complete	Spring 2024
2	Construction	Summer 2024	Spring 2025

**Updated as of 4/2/24*

Music and Fine Arts to AAB – Elevator Procurement and Early Demolition

Project Scope:

- Early demolition package
- Procurement of elevator that will replace the current freight elevator
- Rerouting 1st floor data closet

KEY HIGHLIGHTS AND UPDATES
Demolition substantially complete
This 1 st phase includes selective demolition of the interior, procurement of a new elevator, and rerouting of data closet
Elevator procured



Renovate

1 Arts & Administration Building

Item	Description	Start	End
1	Design	Complete	Complete
2	Construction	Complete	Complete

**Updated as of 4/2/24*

Music and Fine Arts to AAB

Project Scope:

- Renovate the Arts and Administration Building with new practice spaces, media studio, teaching spaces to support the Music and Fine Arts programs

KEY HIGHLIGHTS AND UPDATES
Bidding complete; Bid evaluation and award in progress
Targeting April 2024 for construction start



Renovate

1 Arts & Administration Building

Item	Description	Start	End
1	Design	Complete	Complete
2	Construction	April 2024	Spring 2025

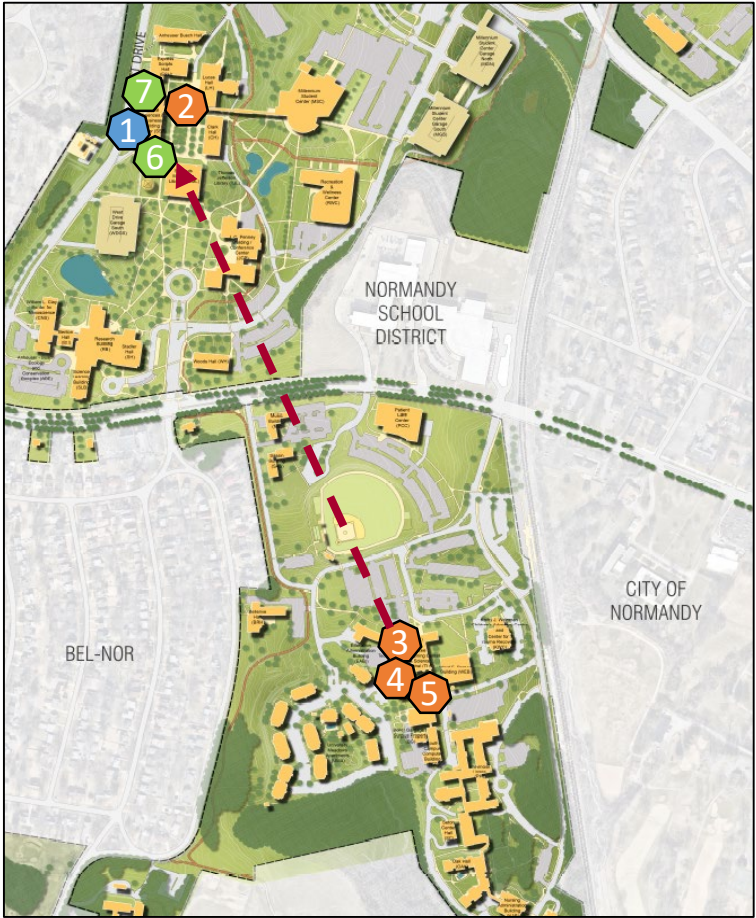
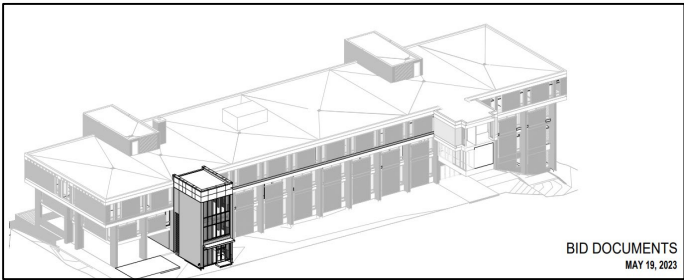
**Updated as of 4/2/24*

SSB Modernization and Expansion - Elevator Addition

Project Scope:

- Construct a new elevator for the Social Sciences Building (SSB) in preparation for the upcoming renovations
- A new elevator will allow for the demolition of the SSB Tower to make way for the new building expansion

KEY HIGHLIGHTS AND UPDATES
Construction of new SSB elevator in progress
Scheduled to complete April 30th; testing & inspections to follow
Anchor Mission
Project architect is within UMSL’s Anchor Mission Footprint



Item	Description	Start	End
1	Design	Complete	Complete
2	Construction	Complete	April 2024

Renovate

- 1 Social Sciences & Business Building (SSB)

Demo

- 2 SSB Tower

- 3 Marillac Hall

- 4 Education and Administration Building

- 5 South Campus Classroom

New Construction

- 6 SSB Elevator
- 7 SSB Expansion

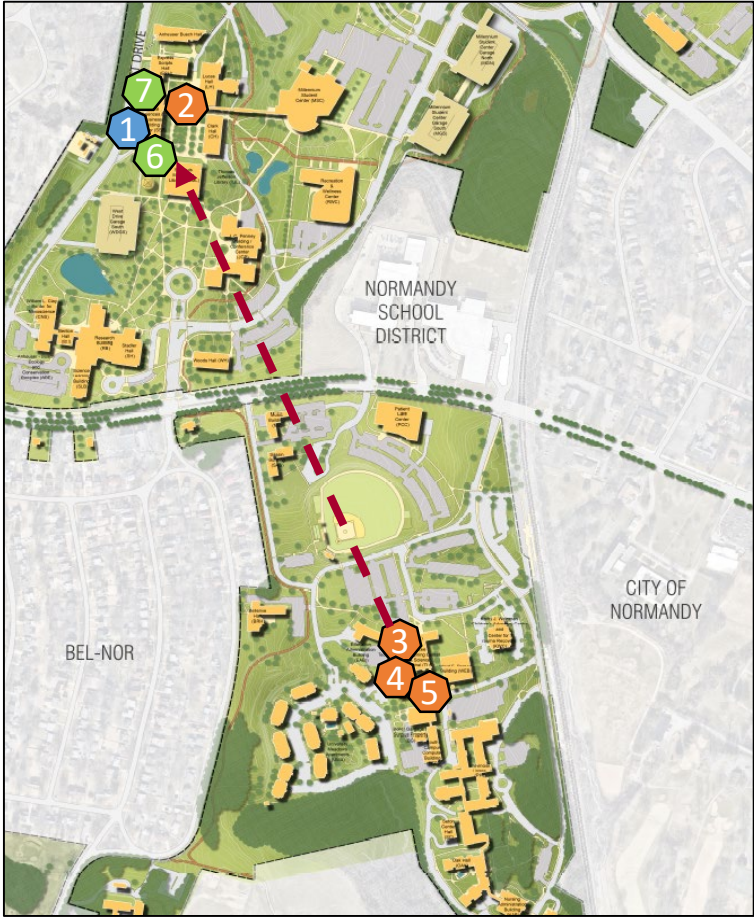
*Updated as of 4/2/24

SSB Modernization and Expansion

Project Scope:

- Renovate Social Sciences & Business Building (SSB). Scope includes interior renovations, improvements to building infrastructure
- Demolish SSB Tower and construct a new SSB Expansion in the North Campus Quad
- Relocate the College of Education and Honors College programs from South Campus to the North Campus Quad
- Once SSB Modernization and Expansion is complete, Marillac Hall, Education and Administration Building, and South Campus Classroom will be demolished as a separate project

KEY HIGHLIGHTS AND UPDATES
COE and Honors College space programming complete
Designer working to align budget and schedule
Anchor Mission
Project architect is within UMSL's Anchor Mission Footprint



Renovate

1 Social Sciences & Business Building (SSB)

Demo

2 SSB Tower

3 Marillac Hall

4 Education and Administration Building

5 South Campus Classroom

New Construction

6 SSB Elevator

7 SSB Expansion

SSB Modernization

Item	Description	Start	End
1	Design	Complete	Q3 2024
2	Construction	Q4 2024	Q3 2025

SSB Expansion

Item	Description	Start	End
1	Design	Complete	Q3 2024
2	Construction	Q1 2025	Q2 2026

*Updated as of 4/2/24

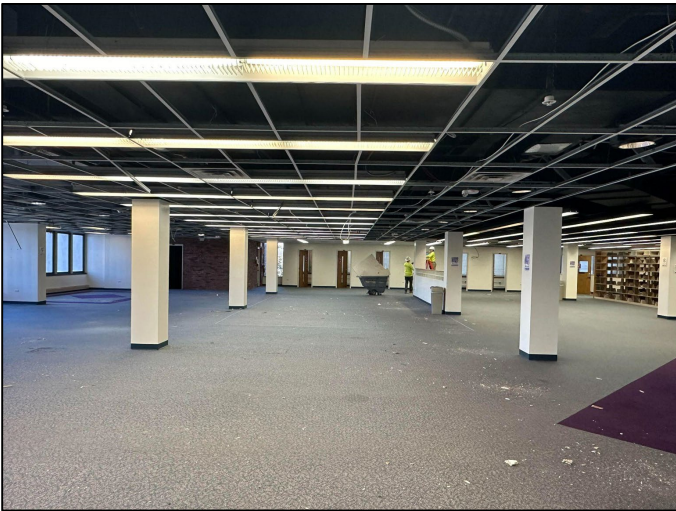
Library Renovation

*Partially Donor Funded

Project Scope:

- Renovate Thomas Jefferson and Mercantile libraries. Includes new student-focused spaces on the main level, a new café area, and an additional entrance on the north side of the library to improve connection with the North Campus Quad
- Relocate existing SSB computer lab to TJ Library
- Relocate library staff to a new administrative suite on the 5th floor
- Project will include an art gallery space in the Mercantile library

KEY HIGHLIGHTS AND UPDATES
Construction in progress; submittals for HVAC and other materials in progress
CPU lab closed and decommissioned
Construction will be phased to keep the library partially open throughout construction



Renovate

1 TJ and Mercantile Libraries

Relocate

2 SSB Computer Lab

Item	Description	Start	End
1	Design	Complete	Complete
2	Art Gallery	Complete	Dec. 2024
3	Construction	Complete	Fall 2025

*Updated as of 4/2/24

Richter Family Welcome and Alumni Center

*Partially Donor Funded

Project Scope:

- Renovate the J.C. Penney South Building into a state-of-the-art Welcome & Alumni Center to enhance the campus experience for prospective students and visiting alumni
- Construct exciting community spaces, meeting rooms, and offices to support the UMSL Admissions, Alumni Engagement, and New Student Programs groups

KEY HIGHLIGHTS AND UPDATES
Demolition complete
Exterior phase begins in April 2024
Bidding for final construction phase in progress; bid open April 10th
Anchor Mission
Project architect is within UMSL's Anchor Mission Footprint



Renovate

- 1 Richter Family Welcome and Alumni Center – (J.C. Penney Building)

Relocate

- 2 Admissions
- 3 Alumni Engagement
- 4 New Student Programs

Item	Description	Start	End
1	Demolition	Complete	Complete
2	Early Construction	Mar. 2024	April 2024
3	Construction	April 2024	Fall 2025

*Updated as of 4/2/24

Project Scope:

- Renovation to the Entrepreneurship & Innovation Center adjacent to the Campus Police Building. The renovation will include updates to the auditorium, study gathering spaces, and office suites for support staff

KEY HIGHLIGHTS AND UPDATES
Schematic design complete; renderings in development and completes in April
Design scheduled to complete in June 2024



Renovate

- 1

UMSL EIC –
(Campus Police
Building)

Item	Description	Start	End
1	Schematic Design	Complete	Complete
2	Design	Complete	June 2024
3	Construction	Fall 2024	Spring 2025

Demo Buildings

Project Scope:

- Selective demolition of buildings on UMSL’s Campus in alignment with the 2021 Campus Master Plan and the overall vision of UMSL’s physical campus
- Removes millions in deferred maintenance to improve UMSL’s operating costs

KEY HIGHLIGHTS AND UPDATES
Demolition of Sassin Building & Old Post Office complete
Design for SSB Tower demo complete
The remaining buildings will be demolished after the related <i>Transform UMSL</i> renovations are completed

Buildings To Be Demolished As Part of <i>Transform UMSL</i>	
Marillac Hall	Music Building
Education Administration Building	Sassin Building
Old Post Office	South Campus Classroom Building
	SSB Tower

2023

Sassin Building & Old Post Office - complete

2024

- SSB Tower
 - Design complete
 - General Contractor RFQ complete
 - Bidding - in progress

2025

- Music Building

2026

- Education Administration Building
- Marillac Hall
- South Campus Classroom Building