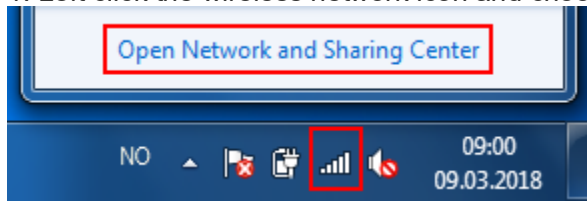
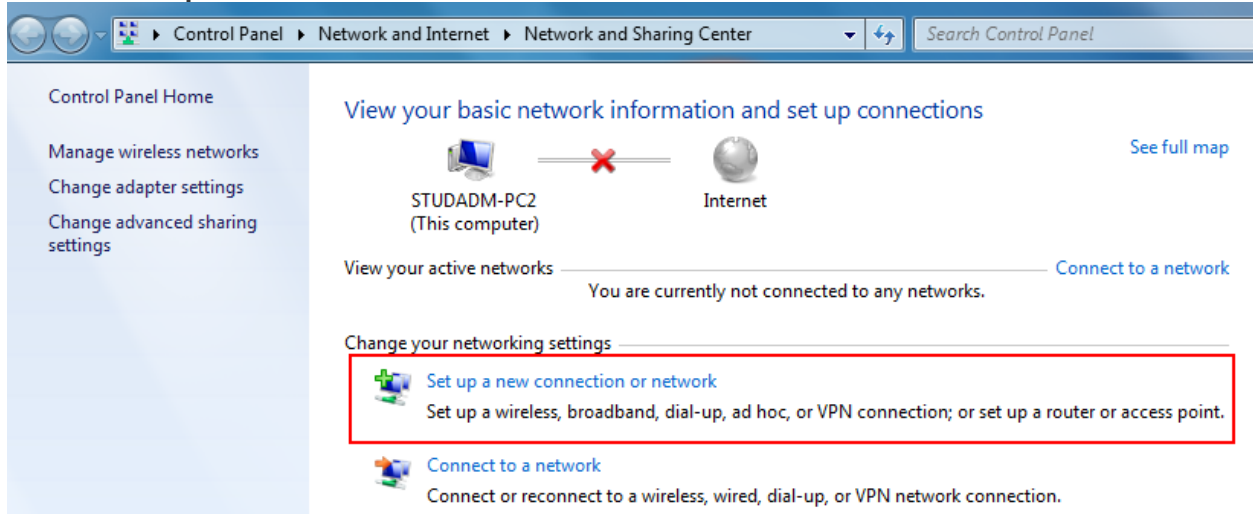


How to set up TritonNet in Windows 7

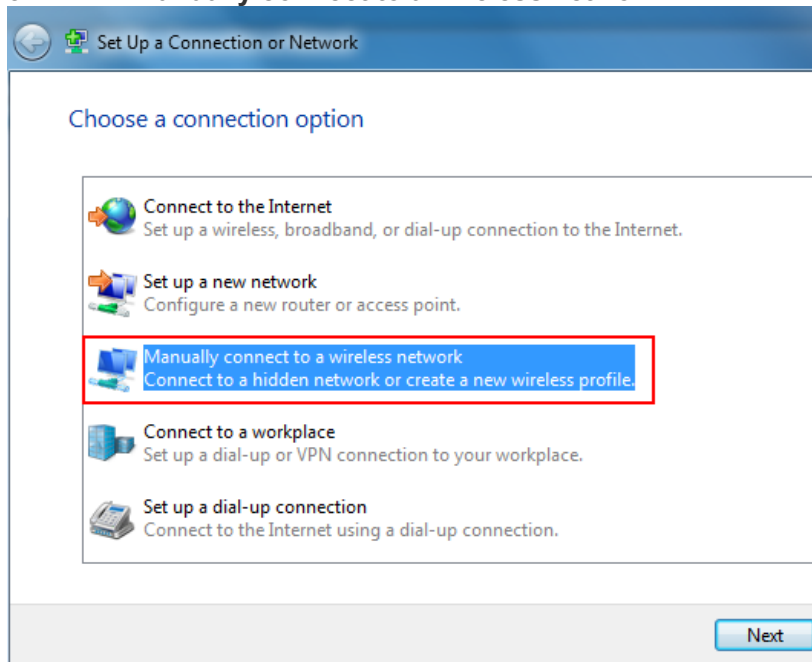
1. Left click the wireless network icon and choose "Open Network and Sharing Center"



2. Click "Set up a new connection or network"



3. Select "Manually connect to a wireless network"



4. Fill in the information like the screenshot below. Click “Next”

Manually connect to a wireless network

Enter information for the wireless network you want to add

Network name: TritonNet

Security type: WPA2-Enterprise

Encryption type: AES

Security Key: Hide characters

Start this connection automatically

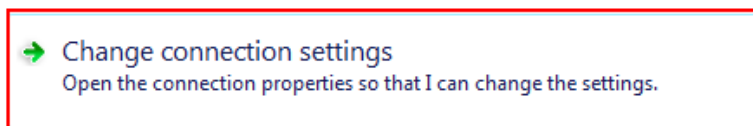
Connect even if the network is not broadcasting

Warning: If you select this option, your computer's privacy might be at risk.

Next Cancel

5. Click “Change connection settings”

Successfully added TritonNet



6. A new window appears with two tabs, “Connection” and “Security”. Click on the security tab and check that the configuration information matches the screenshot below and click “Settings”

eduroam Wireless Network Properties

Connection Security

Security type: WPA2-Enterprise

Encryption type: AES

Choose a network authentication method:

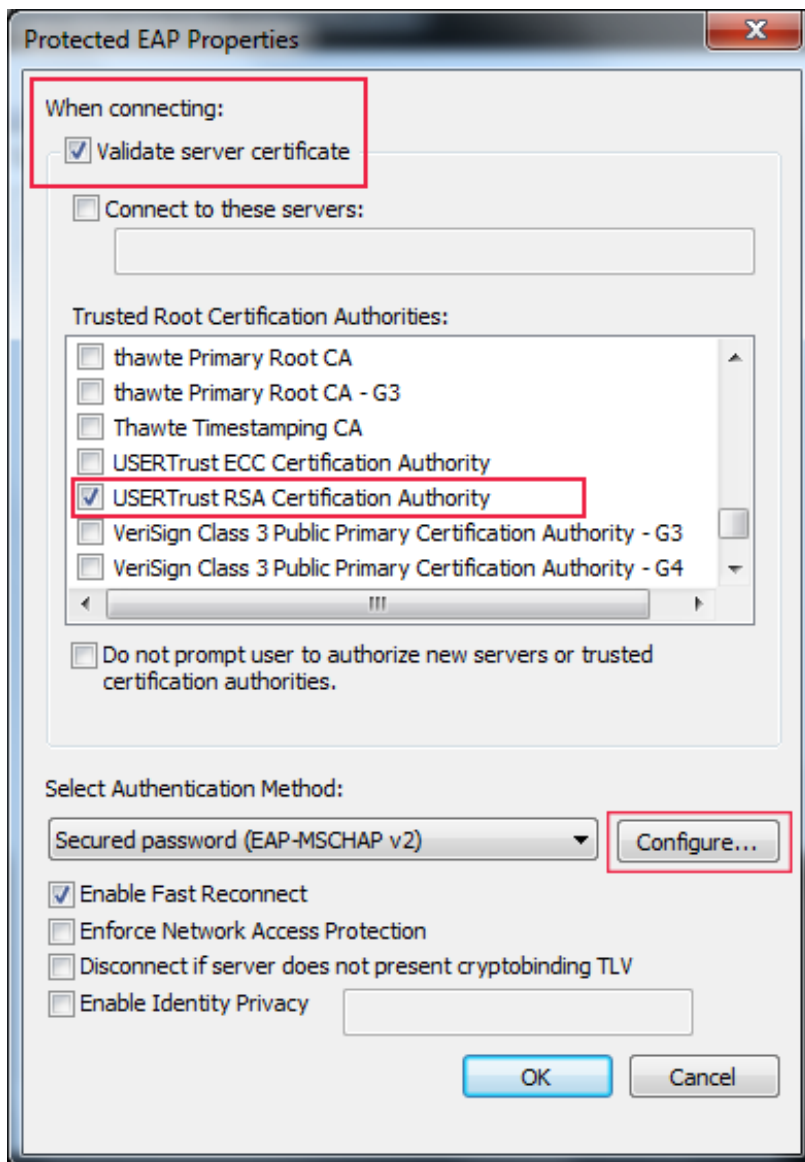
Microsoft: Protected EAP (PEAP) Settings

Remember my credentials for this connection each time I'm logged on

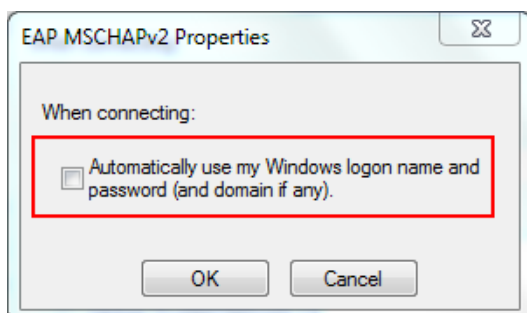
Advanced settings

OK Cancel

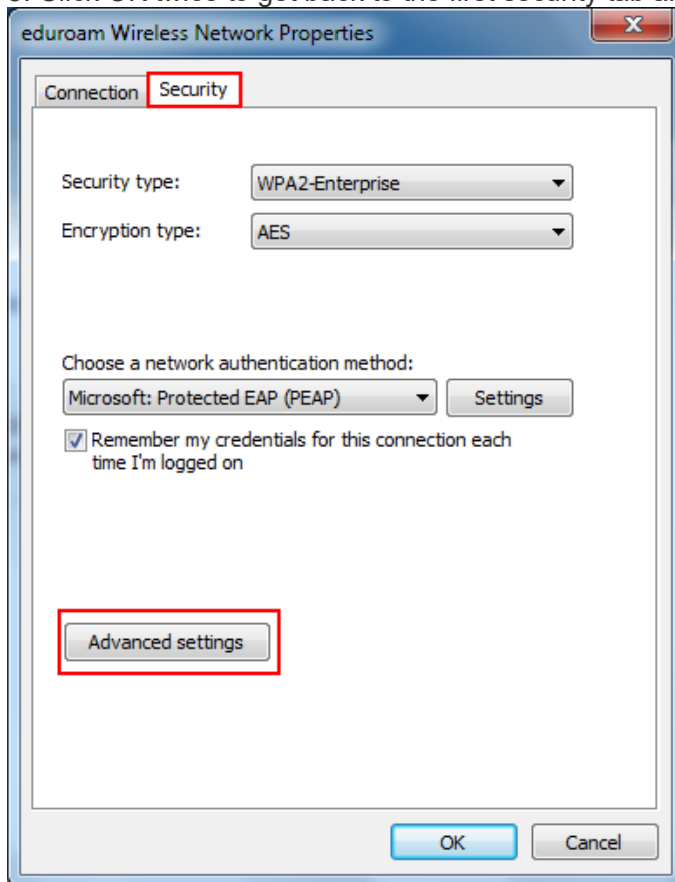
7. Fill out the information as shown below. (Make sure “USERTrust RSA Certification Authority” is check) Click “Configure”.



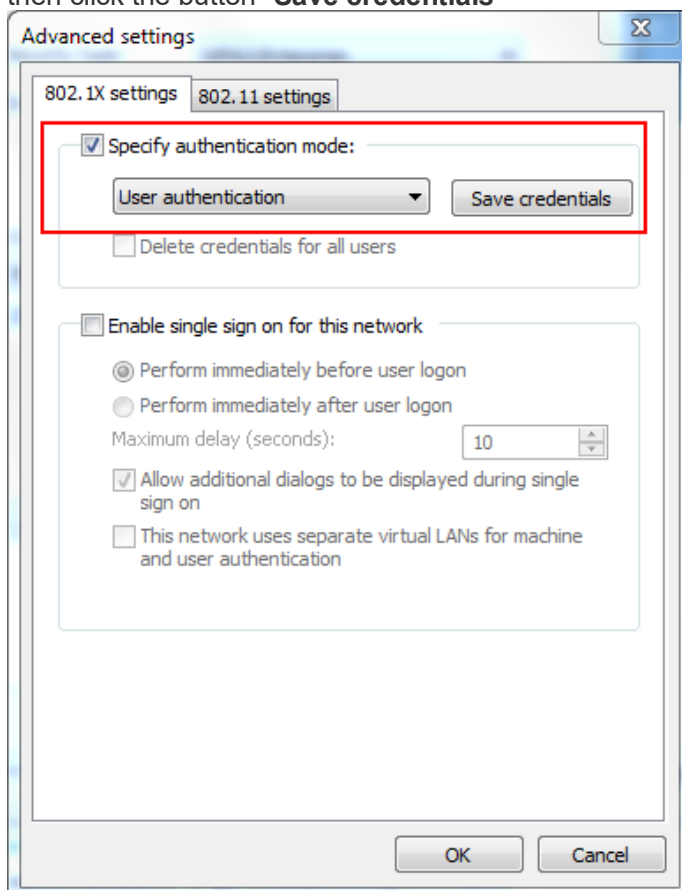
7.1 Turn off automatically using Windows username and password



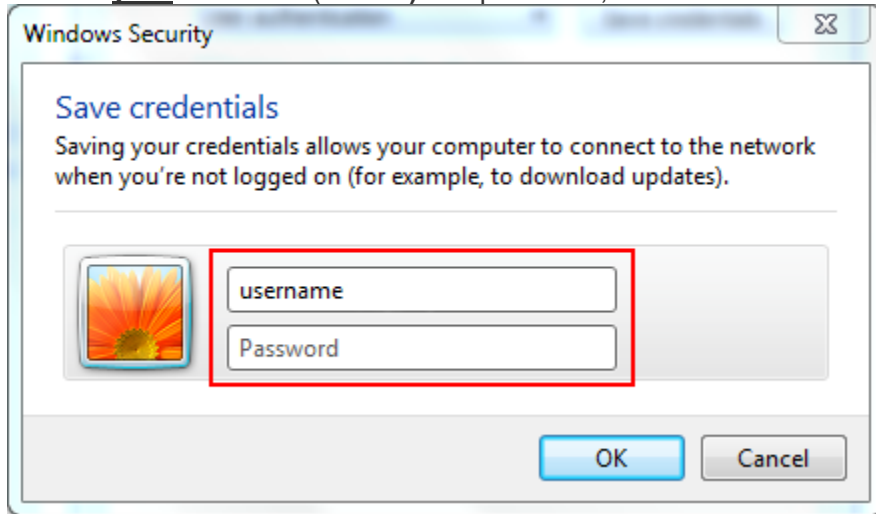
8. Click OK twice to get back to the first security tab and click the button **“Advanced settings”**.



9. Check option **“Specify authentication mode:”** and chose **“user authentication”** in the pull down menu then click the button **“Save credentials”**



9. Fill in **your** username (SSOID) and password, click Ok on all the settings windows.



10. You should now be connected to TritonNet. If you are not connected, left click the wireless icon and select TritonNet and click the connect button.