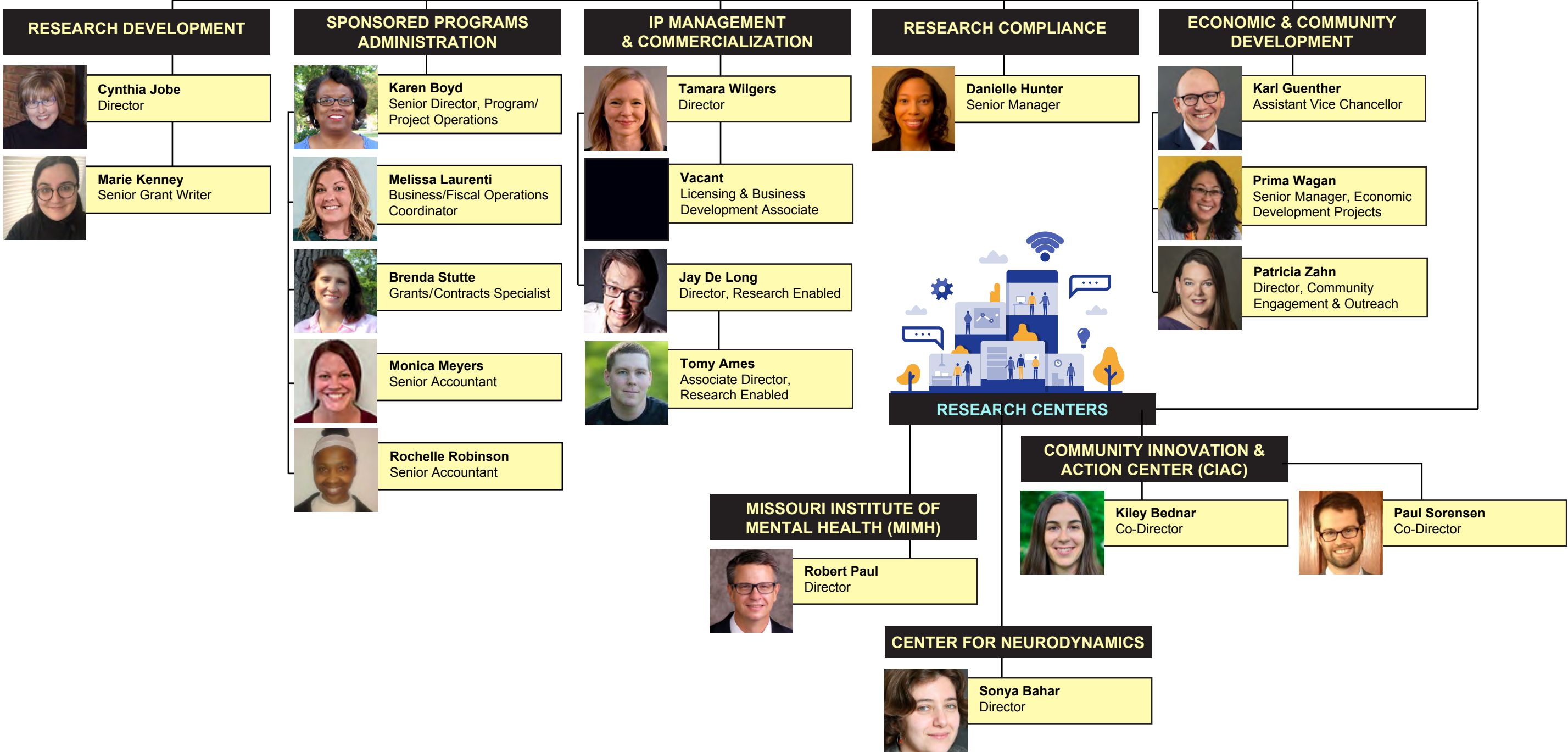




Christopher Spilling
 Vice Chancellor
 Research and Economic & Community Development

McKenzie Schuessler
 Advancement Officer



RESEARCH DEVELOPMENT

- Cynthia Jobe**
Director
- Marie Kenney**
Senior Grant Writer

SPONSORED PROGRAMS ADMINISTRATION

- Karen Boyd**
Senior Director, Program/Project Operations
- Melissa Laurenti**
Business/Fiscal Operations Coordinator
- Brenda Stutte**
Grants/Contracts Specialist
- Monica Meyers**
Senior Accountant
- Rochelle Robinson**
Senior Accountant

IP MANAGEMENT & COMMERCIALIZATION

- Tamara Wilgers**
Director
- Vacant**
Licensing & Business Development Associate
- Jay De Long**
Director, Research Enabled
- Tomy Ames**
Associate Director, Research Enabled

RESEARCH COMPLIANCE

- Danielle Hunter**
Senior Manager

ECONOMIC & COMMUNITY DEVELOPMENT

- Karl Guenther**
Assistant Vice Chancellor
- Prima Wagan**
Senior Manager, Economic Development Projects
- Patricia Zahn**
Director, Community Engagement & Outreach



RESEARCH CENTERS

MISSOURI INSTITUTE OF MENTAL HEALTH (MIMH)

- Robert Paul**
Director

COMMUNITY INNOVATION & ACTION CENTER (CIAC)

- Kiley Bednar**
Co-Director
- Paul Sorensen**
Co-Director

CENTER FOR NEURODYNAMICS

- Sonya Bahar**
Director