

THE NEED IS GREAT AND YOU CAN HELP!



October is *UMSL Month of Community Giving!*

Each year in October, UMSL takes part in the **United Way of Greater St. Louis** and the **CHC: Creating Healthier Communities** employee giving campaigns. This annual effort is a great opportunity to create a stronger community through collaboration, investment and service. UMSL is a community engaged university, and we work in many ways to strengthen and support the great work being done by our community partners to create a region where people can thrive.

This year, there is now one site where donors can make contributions to either or both charities. [Click here](#) to donate or go to www.umsl.edu/monthofgiving/ for further information.

[DONATE NOW!](#)

Give to United Way of

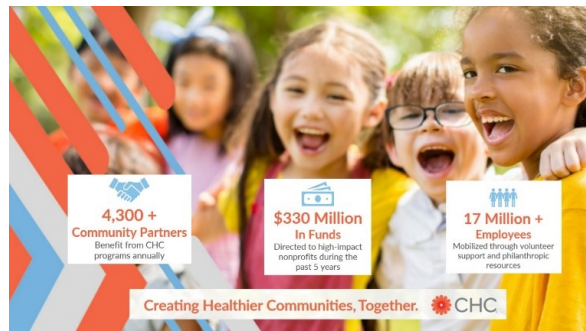
Greater St. Louis

The United Way of Greater St. Louis raises funds to support more than 160 health and human service agencies to serve 1 million people in our region each year. United Way agencies strengthen families, provide job counseling and training, offer affordable childcare, help the elderly, and more.



Give to Creating Healthier Communities

In Missouri, CHC raises funds for 123 high-impact nonprofits to address the barriers to good health and equity while powering transformative change in the communities in which we work. As we know, health is more than healthcare. Creating healthier communities requires a complex web of supports that touch on every aspect of our health and wellbeing.



Watch. Enter. Win!

As part of their 100th annual campaign, United Way of Greater St. Louis is offering a promotion for a chance to win a 2022 Ford Ecosport 4WD. To enter the giveaway, [click here](#).

For further information [click here](#).

\$ WHAT A DOLLAR BUYS

- \$3/pay period gives 20 people access to an anonymous online mental health screening so that can better understand their mental health.
 - \$5/pay period supplies a grocery gift card for a family that is staying away from home for their child's long-term medical treatment.
 - \$10/pay period provides women's wellness visit and mammogram for low-income, working, and uninsured or underinsured patients.
 - \$15/pay period provides information and support during three crisis calls to a 24/7 Helpline for people affected by Alzheimer's.
 - \$20/pay period teaches more than 2,500 children how to avoid obesity and live longer, stronger lives through nutrition and exercise educational materials.
 - \$25/pay period provides 24 nights of shelter for someone who is homeless.
-

Help Us Help Each Other!

If you have any questions or would like to assist with the campaign, please contact Patricia Zahn, Director of Community Engagement & Outreach at zahnp@umsl.edu.

UMSL Month of Community Giving
1 University Boulevard
301 Woods Hall
St. Louis, MO | 63121

communitygiving@umsl.edu