

UMSL 2022

Month of *Community Giving*

GIVE NOW

Your Support Matters

Together we have already [raised over \\$15,000](#) for local nonprofits doing tremendous good in Greater St. Louis during *UMSL Month of Community Giving*. United Way of Greater St. Louis and CHC: Creating Healthier Communities provide programs and services that **help people in the communities where we live and work.**



STL Area Foodbank

You Can Help

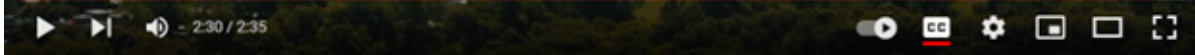
Knowing your neighbors and your social and physical resources makes for a positive community. Our charitable organizations work to build a robust, safe, Greater St. Louis community that enhances the lives of our neighbors and provides them with the tools they need to thrive. Community building was identified as a priority need in three counties across the region.

For those who have not made a gift to United Way before, **please consider a gift of at least \$100 this year in honor of United Way's 100-Year Anniversary.** A gift of less than \$2 a week could provide meals for an entire week for a family of four, a month's worth of diapers or formula for a low-income mother, or job training curriculum for six young people.

[Give](#) to the causes that matter most to you through payroll deductions, credit card, or check. [Click here](#) to donate or go to www.umsl.edu/monthofgiving/ for further information.

Watch. Enter. Win!

As part of their 100th annual campaign, United Way of Greater St. Louis is offering a promotion for a chance to win a 2022 Ford Ecosport 4WD. To enter the giveaway, [click here](#).



Click below to watch the **Creating Healthier Communities (CHC) 2022 Campaign Video!**



Help Us Help Each Other!

If you have any questions or would like to assist with the campaign, please contact Patricia Zahn, Director of Community Engagement & Outreach at zahnp@umsl.edu.