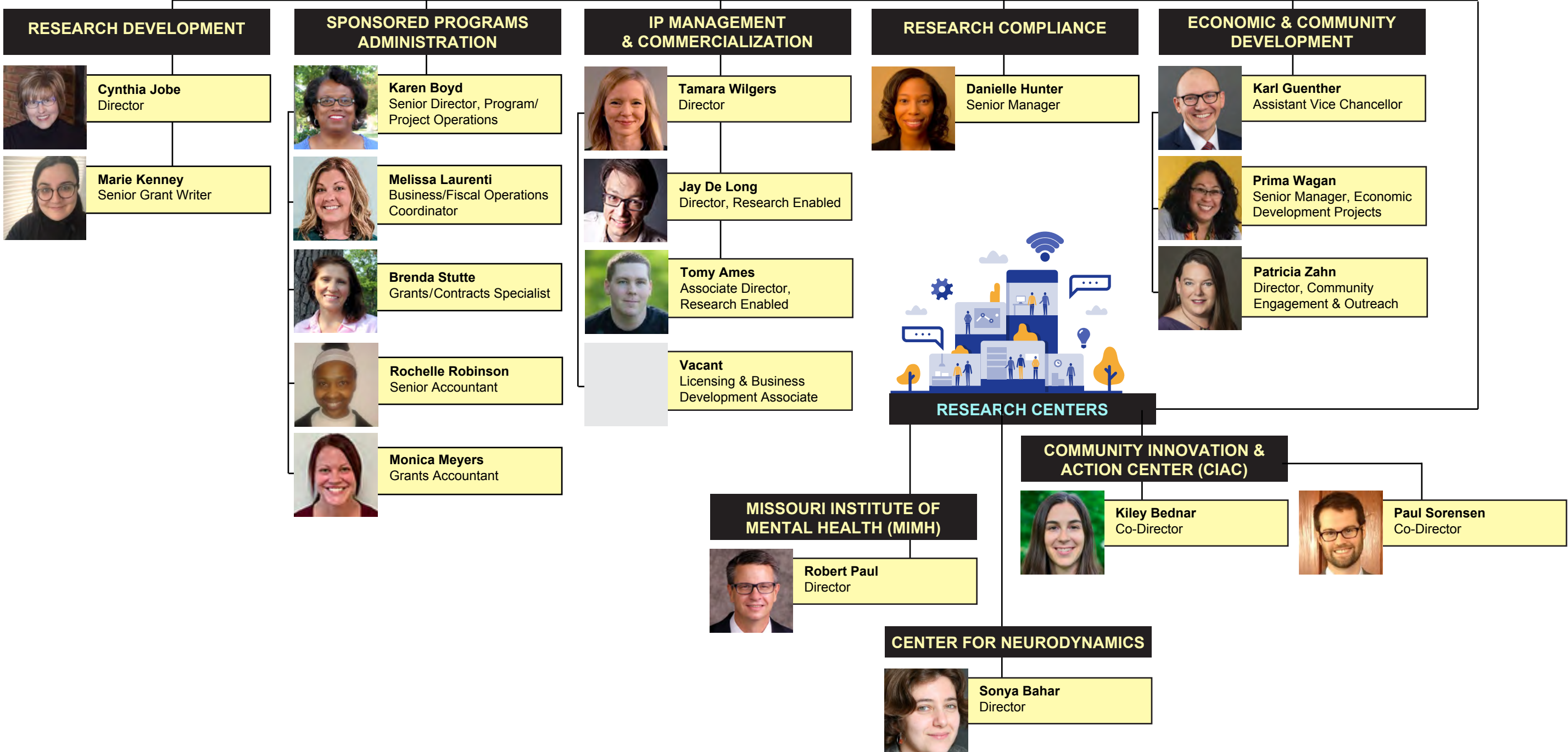




**Christopher Spilling**  
 Vice Chancellor  
 Research and Economic & Community Development

**McKenzie Schuessler**  
 Advancement Officer



**RESEARCH DEVELOPMENT**

- Cynthia Jobe**  
Director
- Marie Kenney**  
Senior Grant Writer

**SPONSORED PROGRAMS ADMINISTRATION**

- Karen Boyd**  
Senior Director, Program/Project Operations
- Melissa Laurenti**  
Business/Fiscal Operations Coordinator
- Brenda Stutte**  
Grants/Contracts Specialist
- Rochelle Robinson**  
Senior Accountant
- Monica Meyers**  
Grants Accountant

**IP MANAGEMENT & COMMERCIALIZATION**

- Tamara Wilgers**  
Director
- Jay De Long**  
Director, Research Enabled
- Tomy Ames**  
Associate Director, Research Enabled
- Vacant**  
Licensing & Business Development Associate

**RESEARCH COMPLIANCE**

- Danielle Hunter**  
Senior Manager

**ECONOMIC & COMMUNITY DEVELOPMENT**

- Karl Guenther**  
Assistant Vice Chancellor
- Prima Wagan**  
Senior Manager, Economic Development Projects
- Patricia Zahn**  
Director, Community Engagement & Outreach



**RESEARCH CENTERS**

**MISSOURI INSTITUTE OF MENTAL HEALTH (MIMH)**

- Robert Paul**  
Director

**COMMUNITY INNOVATION & ACTION CENTER (CIAC)**

- Kiley Bednar**  
Co-Director

- Paul Sorensen**  
Co-Director

**CENTER FOR NEURODYNAMICS**

- Sonya Bahar**  
Director