

# CURRENT

January 19, 1984

University of Missouri-St. Louis

Issue 470

## Degrees conferred on 603 students

Kevin A. Curtin  
editor

Celebrating its 20th birthday, UMSL graduated 603 students from its ranks during ceremonies held Jan. 8 at the Mark Twain Gymnasium. The ceremonies were presided over by UMSL Chancellor Arnold B. Grobman and the commencement address was delivered by retiring UM President James C. Olson.

Richard Gaddes, general director of the Opera Theater of Saint Louis, was given an honorary doctorate of fine arts by the university for his impact on the cultural life and character of the St. Louis area and the state of Missouri. The Opera Theater of Saint Louis has won national and international acclaim for their performances in the standard repertoire and new compositions under Gaddes' leadership.

Olson's remarks to the near-capacity crowd at the gymnasium offered both a reflection of the past 20 years and also a message to Missouri citizens not to abandon higher education in the future.

"The advances here are truly remarkable," Olson said, "and all the more so when we consider the campus expanded most vigorously during a period when the unprecedented growth in higher education had slowed nationally.

"We face technically demands to produce the technically skilled yet liberally educated people society needs to successfully meet the many challenges that confront us. At the same time, our funding is being cut. I hope St. Louisans, and all Missourians, see to it the entire university system receives the financial support it so urgently requires. I needn't tell you that

students are shouldering a larger part of the financial burden than ever. In 1963, fees were \$100 per semester. Now they are in excess of \$600.

"Some say that is as it should be. I think not. The work of the university benefits not the few, but the many, who should share in the burdens as they share in the rewards. Education improves the student, yes. But it also improves, socially as well as economically, the community where he or she lives," Olson said.

Olson also praised the faculty at UMSL, noting that faculty members here are primary or associate editors for 51 scholarly journals. "This year," Olson said, "only three professors in the entire state were honored with teaching fellowships from the National Endowment for the Humanities. All three were from UMSL.

"What is most important for the people of Missouri is that we take affirmative steps to ensure we retain the quality of individuals that have been so painstakingly recruited," Olson said.

Olson noted that UMSL is unique in the area for having the largest enrollment and over 22,500 alumni. UMSL also has the largest black enrollment of any college or university in Missouri, and women account for over half of the enrollment.

Of the 603 graduates, 59 graduated cum laude (3.20-3.49 GPA), 38 graduated magna cum laude (3.50-3.79 GPA) and 27 received summa cum laude (3.8-4.0 GPA). 4.0 is the highest possible grade point average. There were also numerous awards and recognition for contributions to student and national organizations and also for membership

in scholastic societies.

Speaking directly to the graduates, Olson praised their successes and reminded them of their personal and social responsibilities.

"All of you, regardless of major, have learned how to learn," he said. "That ability is, in many ways, more important than any specific knowledge because it transcends the boundaries of a particular discipline, technology or situation, boundaries that are shifting rapidly as we enter the 21st century.

"Obviously, you graduates have given learning a high priority. You must continue to do so. Your education must not end today. Use your diploma as a sail that carries you toward new learning and new knowledge, not as an anchor that fixes you in one position for life."

## Fitness fanatics hit new trail

A 1¼-mile "fitness trail" for joggers and walkers has been opened at UMSL.

"General fitness is the theme of the trail," said Larry Coffin of the UMSL intramural department and one of the trail's planners. In keeping with the fitness idea, the trail is divided into 20 exercise stations and heart rates may be checked at several of the locations.

"It's aimed at improving general fitness in all aspects of the body — strength, flexibility, and agility," Coffin said.

UMSL's fitness trail begins and ends at the Mark Twain Building. The trail parallels West Drive (the first street on the right after entering the campus from Florissant Road) until reaching the parking garage.

The trail then cuts into the campus behind Lucas and Clark halls, continues up the student parking lot and finally winds back to the Mark Twain Building.

Joggers and walkers using the route begin with some stretching exercises, and continue with aerobics and strength exercises

for much of the trail. They conclude with a series of "cool down" maneuvers.

In all, there are 32 exercise routines along the UMSL trail. They include traversing an overhead ladder, vaulting a diagonally-set bar, balancing on a beam, and other exercises such as jumping jacks and push-ups.

The 20 exercise stations are about 100 yards apart, and recommend exercise repetitions for participants at training and competitive levels. Each station recommends whether to run or jog to the next post.

Five of the stations also serve as heart-rate checkpoints so that those using the route can receive instant feedback on their cardiovascular performance.

For volunteers to use the trail during winter, Gail Greenwald of the UMSL Physical Education Department advised, "Wear layered clothing, with cottons next to the skin to absorb moisture and wools and nylons on top.

"Try to hit a happy medium of being comfortable and protected, but don't dress so heavy as to

encourage sweating, which will chill the body," Greenwald said.

"As the body warms up, due to exercise, shed top layers that aren't needed," she said. "In extremely cold weather be sure to have hands, ears, and the face covered and consider breathing through a mask or scarf to help warm the air." Greenwald added that "good supportive shoes" are also a must.

The trail was funded by a \$9,150 grant from student activities fees. Station signboard, equipment, directional arrows, and surfacing were purchased from the Southwood Corporation of Charlotte, N.C., a firm that has supplied materials for similar trails all over the country.

The idea for the trail was proposed by a coalition of UMSL organizations. They include Phi Epsilon Kappa, the professional physical education fraternity, the Army ROTC club, Rho Nu (UMSL School of Nursing) and the Student Optometry Association.

See "Trail," page 3

## Fraternity honored for contribution

The Sigma Tau Gamma fraternity at UMSL has been recognized by the Missouri state legislature for its outstanding civic and charitable work during the final legislative period of 1983.

State Senator Edwin L. Dirck (D-24th District of St. Ann) recognized the group for its outstanding contributions to the Bel-Ridge community during ceremonies held Jan. 7 at the Sigma Tau house located at 8660 Natural Bridge Road. UMSL chancellor Arnold B. Grobman was also present during the event.

"This is something that represents five years of hard work," said Glenn Robinson, president of the fraternity. "It's an exhilarating feeling to know that it was brought before the state Senate of Missouri. I'm glad that our Senate awards citizens for their civic and charitable activities."

Sigma Tau Gamma held a Thanksgiving Day dinner for senior citizens of Bel-Ridge as part of their on-going commitment to the community. Along

with the White Roses, the fraternity's affiliate women's group, the fraternity had over 150 people attend the dinner. In addition, the groups distributed food to the



**BROTHERLY SPIRIT:** State Senator Edwin L. Dirck (left) congratulates Sigma Tau Gamma president Glenn Robinson for the fraternity's contributions to the citizens of Bel-Ridge.



**KEEPING FIT:** Gail Greenwald demonstrates one of the 32 exercise routines on the new UMSL fitness trail. The 1¼-mile trail starts near the Mark Twain Building and wraps around the campus.

## inside

Barb Willis, UMSL Student Association president, has an interesting past, a demanding present, and a potentially bright future as she is profiled in this week's features/arts section.

page 7

Recapping the busy holiday schedules of the men's and women's basketball teams helps bring you up to date with our hardwood sports section.

page 10

editorial . . . . . page 4  
around UMSL/  
classifieds . . . . . page 6  
features/arts . . . . . page 7  
sports . . . . . page 10

The Thanksgiving Day meals cost Sigma Tau Gamma around

See "Fraternity," page 2

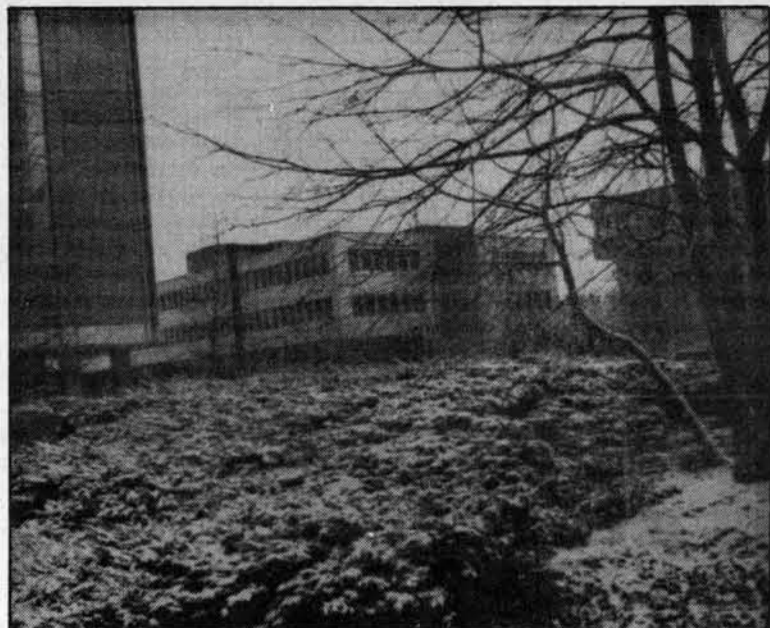


# Nursing school given accreditation

The School of Nursing at UMSL has received full accreditation from the National League for Nursing. Full accreditation means that the school meets the league's standards for a quality institution, according to Shirley A. Martin, dean of the School of Nursing. It is for eight years. Martin noted that about 10 percent of the country's nursing schools like UMSL's are accredited.

UMSL accepts only registered nurses working toward a bachelor of science in nursing because, according to Martin, many graduate schools will not accept nurses unless their undergraduate degrees were earned at an accredited institution. Accreditation was given to the nursing school at UMSL in the first year possible. A school cannot apply for accreditation until its first class has graduated.

UMSL's two-year-old nursing school graduated its first class in May 1983. The school's enrollment this year is 267 students, most of whom attend part-time, Martin said. The program at UMSL includes 32 hours of nursing courses and 31 hours of upper-level courses in other fields. Two nursing school deans visited UMSL in September as part of the National League for Nursing evaluation.



**JUST A SPRINKLE:** Light snow produced scenes like this on the UMSL campus early this week but heavier snow was on the ground by Wednesday. Winter still has two more months to go.

## AIDS inquiries answered

[Editor's note: Gwendolyn Boyd, who wrote the following piece, is a junior in the UMSL School of Nursing.] Johnny Doe has a lover named Kid Billy. They've been going together for several years. Ever since the affair began, their homosexual relationship has been considered taboo by their families. Lately, they've received a lot of phone calls from Johnny's mom chanting, "You're gonna' get AIDS — you better get help! You're gonna' get AIDS — you better get first aid." Then she hangs up. So, Johnny and Kid decided to find out more on AIDS. Back in 1981, an incurable disease called Acquired Immune Deficiency Syndrome hit the United States. It was believed to have only affected the male homosexual population; however, research has revealed that a percentage of hemophiliacs, Haitians and intravenous drug users have also contracted this disease and are dying from it.

According to a recent Time Magazine story, 75.9 percent of the victims are active homosexual men, 16 percent intravenous drug users, 5 percent immigrants from Haiti, and 1 percent hemophiliacs. The overall mortality rate is 37.6 percent and rising. What causes AIDS? The cause is unknown, but what happens to its victims is that their immune system is knocked out, leaving them defenseless against a host of "opportunistic" infections. Researchers believe that in the male homosexual population the disease is sexually transmitted. In intravenous drug users, both male and female, it is suspected that an infectious agent is transmitted into the blood by "sharing of needles." Hemophiliacs have been at risk due to their constant need for blood transfusions, which makes them targets for blood-borne infections from various donors. No one has yet ruled out a definite reason as to why

Haitian immigrants are affected by the infectious agent. However, it is suspected that it's a combination of the previously stated causes. What are the symptoms? Unfortunately, the symptoms don't show up immediately. The incubation period for AIDS (the time between infection and the onset of symptoms) varies from a few months to more than two years. However, early manifestations include persistent fatigue, fever, diarrhea, night sweats and swollen lymph glands in the neck, armpits and groin. Also, the victim may contract a string of viral infections such as colds, flu, herpes simplex and shingles. For additional answers to questions about the syndrome, dial the toll free hotline number 800-342-AIDS. \*\*\*\*\*

## Fraternity

from page 1  
\$700. The group had raised over \$800 collected on the street corner of Natural Bridge and Hanley roads. The remaining \$100 was donated to the Normandy Municipal Council for an elderly Meals-on-Wheels program. The resolution that was given to the fraternity was passed during the recent emergency session of the legislature. Senator Dirck said that Sigma Tau Gamma has helped prove the fact that fraternities not only enrich the lives of their members but also enrich the lives of the people in their communities. According to the vice presi-

dent for education of the fraternity, Jeff Sheldon, Sigma Tau also has several projects scheduled for this semester that should involve the 30 members and their new pledges in community work. "We are planning something in the spring with the Bel-Ridge Senior Citizens," Sheldon said. "It may involve three- or four-man teams going out and doing the spring clean-up of neighborhood yards. Mr. Hurt still has several ideas. But we'd like to get started as soon as the weather clears. "It's important that we help others and enrich ourselves," Sheldon said.

**"YOU'RE PREGNANT!"**

What to do? The choice is yours. We offer: • pregnancy tests • medical exams • diagnostic ultrasound • counseling • referrals • abortions

For 10 years our emphasis has been on Support of the woman, informed consent, education and strict medical standards and ethics. Physicians are board certified OB, GYNs.

**reproductive health services**

ST. LOUIS WEST COUNTY  
100 N. Euclid 13975 Manchester, Mo.  
367-0300 227-7225  
Toll free in Mo. 1 (800) 392-0088  
Toll free in surrounding states 1 (800) 325-4288  
LICENSED/NON-FRCHIT/member NATIONAL ABORTION FEDERATION

**PRE-PROFESSIONAL ADVISING**

**Engineering**  
225 Benton Hall  
Dr. Dreifke 553-5029 or 553-5931

**Law**  
303 Lucas Hall  
Dr. Burns 553-5300

**Health Sciences**  
303 Lucas Hall  
Dr. Friedman 553-5300

**"French in the Business World"**

Course leading to the Certificat pratique de francais commercial de la Chambre de Commerce de Paris

**"French Stylistics"**  
Jan. 24 - May 15  
Registration: Jan. 18 & 19  
Information: 727-3486  
College credit available

**Alliance Française**  
Ecole de Saint Louis  
7438 Forsyth Blvd.  
Suite 208  
Saint Louis, Mo. 63105

**Student Association Positions available immediately for Administrative Assistants**

For information, call 553-5105 or stop by Room 262 U. Center.

**The Current is in need of a News Editor**

For information, call 553-5174.

**FRIDAY & SATURDAY AT THE MOVIES**

**THE STAR CHAMBER**

Jan. 20 & 21

7:30 & 10 p.m. 101 Stadler  
\$1 w/UMSL Student I.D. \$1.50 General Public

**VIDEO** Monday-Friday 9 a.m.-3 p.m.  
Monday-Thursday 5 p.m.-9 p.m.

**SUMMIT LOUNGE**



# Job market begins upward surge for '84 grads

(CPS) — The class of 1984 will enjoy one of the most dramatic upturns in the job market in recent history, according to two just-released national studies.

After several years of dismal employment conditions for the nation's college graduates, it appears job offers, as well as salaries, will be up significantly this spring.

"At the B.A. level, things are going to be up about 20 percent," proclaimed Victor Lindquist, placement chief at Northwestern University and author of that school's Endicott Report on the national job market.

"For the first time in several years we're starting to see an increase in the number of jobs for college graduates," echoed Jack Shingleton, Michigan State University's placement director and supervisor of MSU's annual jobs forecast.

Although MSU's study is noticeably more conservative — Shingleton expects only a 5 percent increase in the number of job offers — both job forecasts expect 1984 grads to fare far better than their predecessors in 1982 and 1983.

"The market overall is bouncing back from this two-year

decline we've been going through," noted Lindquist.

Besides the predicted 20 percent increase in job opportunities for four-year grads, Lindquist said, "the market will also be strong at the master's level, up about 28 percent over last year.

"The largest increase in all areas is at the master's level in engineering," he added. "The 'Double E' (electrical engineering) degree is going to be the crown prince — up 28 percent over last year — along with degrees in the computer science area."

Shingleton thinks those figures

may be too optimistic, but agreed that "demand is stronger," and that "the curse is moving in a positive direction for a change.

"There will be a heavy emphasis on electrical engineering and computer science majors," he said, "although chemical and petroleum engineers will have a more difficult time this year."

The upturn has been coming gradually. In August 1983, College Press Service reported a growing sense of optimism among campus placement directors that the end of the recession and the coming of an election year signaled better times ahead for collegiate job seekers.

And in an October 1983 CPS article, both Shingleton and Lindquist accurately predicted the upbeat results of their 1984 jobs forecasts.

Geographically, Shingleton says, the Southwest, Southeast, and South Central sections of the country will have the best job opportunities. The Northeast, Midwest, and Northwest regions will be the worst areas for job seekers.

According to the MSU study, electrical engineers will have

the highest starting salaries — \$26,643 — of all four-year grads. Starting salaries for agriculture and marketing majors will hover around \$17,500 and accounting majors can expect to earn about \$18,600.

Education majors — at \$14,779 — and human ecology grads — at \$13,917 — have the dubious distinction of being the lowest-paid majors for the coming year.

Even with their rosy predictions for the coming year, however, both studies caution that graduates will still have plenty of competition for job openings.

"It's still a buyer's market," Lindquist warned. "It will be very competitive, and if students are going to be successful they'll have to be aggressive in their search."

And while the market may look brighter for grads with master's and bachelor's degrees, Ph.D.s may have a harder time than ever finding employment.

A new Princeton University report predicts that there will be three times as many Ph.D.s flooding the academic job market as there are jobs available for them.

## Women get less financial aid

WASHINGTON, D.C. (CPS) — Women often get less financial aid than men, even though they tend to need more aid money than their male counterparts, according to a new U.S. Department of Education study.

For the 1981-82 school year, women students got only 72¢ in grant money for every \$1 awarded to men, yet women earned

only 68¢ for every dollar earned by men students, the report shows. And despite lower aid awards to women students, nearly twice as many women are classified as "independent" on their student aid evaluations.

"There always has been an inequity in the financial aid awards to men and women," noted Mary Moran, the consultant to the

Education Department who authored the study. "Some of it could be discrimination, and some of it is due to aspects of the student aid formula used in calculating award amounts," she said.

In the Pell Grant program, for example, more women students receive aid than men, but women's awards averaged \$880. Men's awards averaged \$913.

Similarly, under the College Work-Study program the average aid amount for women was only \$753, while men averaged \$830.

"A lot of [the problem] is more an institutional issue," Moran noted. "Some institutions do make an effort to address the [male-female] equity issue, and some do not report it at all."

Schools need to channel more of their campus-based aid money to part-time, non-traditional students, she said, since many women aren't able to attend classes full-time. Schools should also develop fairer standards for computing child care expenses which are used in determining students' aid needs, she added.

## ISO presidency open

Cris Lesniak  
reporter

The position of president of the International Student Organization is temporarily vacant due to the graduation of Ethiopian Waldou Yoseph, according to Marilyn Sneed, ISO program coordinator.

"We will fill the position later this month when we hold our next meeting," said Lilly Chan, an ISO member. "We don't have a date set just yet." Chan and ISO vice president Kyriacos Tsiaklides will handle the day-to-day busi-

ness of the organization until a new president is elected.

Harry Lim, another ISO member, said that he felt positive about the transition. "It will encourage new programs and ideas," Lim said.

The International Students Organization's office, located in Room 302 Social Sciences Building, assists foreign students in the use of UMSL services. It also offers counseling services and social activities. Interested students may visit the office between 10 a.m. and 4 p.m. or call 553-5797.

## Trail

from page 1

The Athletic/Physical Education Wellness Committee and the UMSL Women's Center endorsed the suggestions.

"A fitness trail is an excellent way for the university to functionally display its commitment not only to the education of the mind but also to the development and maintenance of a healthy, fit body to house the mind," stated the student organizations requesting funds for the trail from

the Student Services Fee Committee.

According to the sponsoring student organizations, the trail can support hundreds of joggers daily and needs no supervision.

The UMSL trail was tested in November and the route selected was judged the safest because it requires only two road crossings.

For more information about the fitness trail, call 553-5229 or 553-5124.

**Okay, so you've got a semester or two at U.M.S.L under your belt and you've found that meeting people isn't quite as easy as it might seem. And maybe you've found something missing in the 9:00 to 1:00 "part time job" atmosphere. Ever wonder where the action is?**

**We're SIGMA TAU GAMMA and we've got some answers. We are a social fraternity and we can help fill the void that is inherent in a commuter campus...**

**We Think We've Got Something For You!**

**★ OUR 2<sup>nd</sup> SEMESTER RUSH IS NOW IN PROGRESS ★**

FOR FURTHER INFO CALL

**427-9364**  
FRATERNITY HOUSE

**928-0324**  
SCOTT DOLITSKY MEMBERSHIP  
CHAIRMAN



**SIGMA TAU  
GAMMA**  
*Brotherhood*  
**OF VALUE**



# editorials

## Surcharge rising to new heights

It's no great secret to any of us that the Board of Curators increased the surcharges at the University of Missouri while we were snug in our beds over Christmas. For a full-time undergraduate student, that increase comes to \$14 or about 2.3 percent. And we all probably paid the amount with little or no grumbling, accepting that this is just another part of life that we can't do anything about.

Better start thinking of something fast, before a large chunk of our higher education is gone.

The Board of Curators had to raise the fees because about \$3.3 million had to be cut from the UM general operations budget. That's because the governor had no choice but to withhold 2 percent from the 1983-84 state appropriations. Our fee increase dumps \$839,400 into the UM till to help offset losses. It is only a second-semester surcharge, but it's one that is likely to keep going up.

To make ends meet, the University will slash \$700,000 from the Missouri Research Assistant Act, which helps students and faculty alike get new projects to work on that eventually help industries and communities. Additionally, \$950,000 are also being cut from a central reserve fund — sort of a UM "cookie jar" that pays for library acquisitions, equipment and emergencies. This means very few new books on our shelves, no new lab equipment, and if the roofs start leaking, there may just be enough to buy buckets to stick under the holes.

Worse still is that the Board of Curators

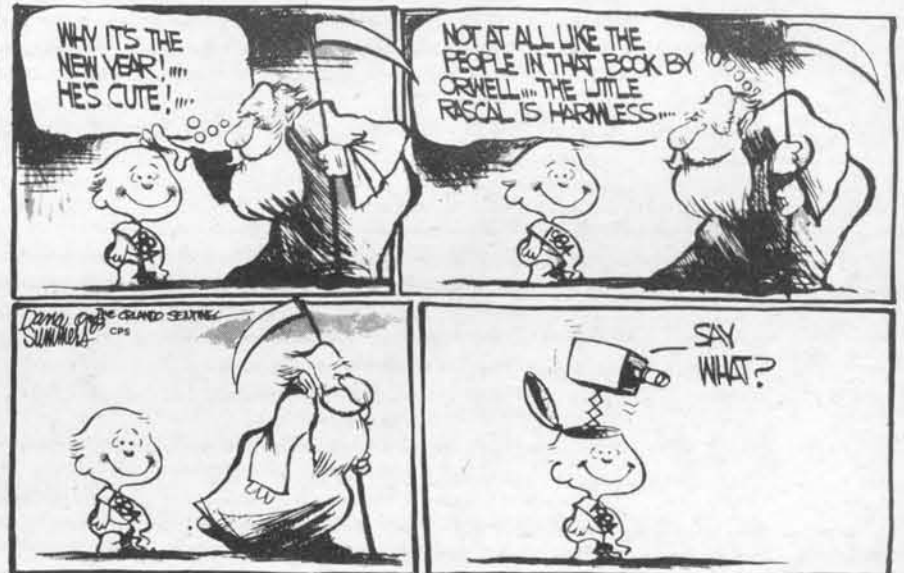
will have to cut \$857,500 from personnel savings, reductions in staff, and "other expense and equipment decreases." That last line could read like faculty reductions in salaries or the number of positions. It will surely mean that the UM staff, having gone through wage cuts and freezes, are likely to look elsewhere for jobs. The services they render to students would be greatly affected.

If you've made plans to go on into post-graduate work at the University of Missouri, you should know that our law school raised the fee 4.2 percent, veterinarian school fees up 3.3 percent, and all engineering programs had to increase by 5 percent. In fact, all UM schools felt this, and will likely feel it again if something's not done.

Our costs, including books, are going up and up and it's getting easier to see that our faculty are not being treated with the equity that other states afford their higher education personnel. What good is it if you have the best books on the market but no one to ask questions about them? And it's probably going to be distracting when you can't get information from the library you need or you're shivering because the school has to keep outrageous fuel bills down.

The time to increase state spending in Missouri is now. Even if you are willing to relocate to find your job, remember that a student from a North Carolina state school has all the opportunities that you may be missing because we are unwilling to increase our taxes at all. Prospective employers are aware of this, too, and know

# 1984



something about the schools of their employees. If you are 18 or older, you can vote and help change this situation. Our legislature has to be reminded that the state is ours, not theirs, and it's our future that we're voting on.

It's getting closer to the scariest time of the year — election time — and we have to

have the courage to speak up and say we're all willing to split the cost amongst ourselves. If we pay only a little more taxes in the future, the cost of a good higher education can remain stable. Getting rid of one big fear will flush out a multitude of smaller ones, and our state government needs to be told so.

## letters



### Checked by Chess Club

Dear Editor:

As president of the UMSL Chess Club, I would like to bring to your attention some incorrect information that was stated in the article titled "Funds Available for Student Organizations," which appears on the front page of the Nov. 10 issue.

First of all, it is incorrectly stated that the Student Activities Budget Committee funding requests "should be for one-time purchases of equipment, physical improvements and other related items." The Student Services Fee Committee is the committee which grants requests according to the above criteria, i.e. for one-time capital improvements. The SABC allocates funds for regular organizational activities, administrative costs, and special projects and programs. These are the costs which most student organizations face on a regular basis.

Secondly, it is incorrectly stated that the Chess Club "made a request to send one or two students to a chess tournament in Canada Dec. 26 through Dec. 30." Actually, we are requesting funds to send two four-man teams to the Pan-American Intercollegiate Chess Team Championship, which will be held in Worcester, Mass. Dec. 26 through Dec. 30. This is an international tournament which is open to collegiate teams from the Americas, including Canada and the Latin countries. The Chess Club is also requesting funds to help defray the cost of hosting "The First Annual UMSL Open," which is a nationally-rated tournament to be held on the weekend of Jan. 7 and 8, 1984.

Sincerely,  
E. Tom Kuefler Jr.  
President, UMSL Chess Club

### Farewell to a friend

Dear Editor:

How do you say goodbye to a friend? She always made the extra effort to help everyone. She always seemed to care about every aspect of her job. Many times the rush was on — the pressure to complete her tasks was immense, but she put aside her duties for just a second to inquire how your day was going.

It is with fond memories I will always remember Kathy, as we talked about adolescent problems of her children or about the many ways of improving a vegetable garden. Many times I sought advice from a person I called my good friend. Never did I find poor advice, and I grabbed the knowledge of such an experienced

woman to use again in the future.

There was a wonderful give-and-take relationship as we shared policies like two eager colleagues. I will miss the professionalism she displayed, and the humor that went along with it to cope with the pressures of accomplishing her every task. My eyes will tear when I see many documents with the familiar "K" scrawled on them, but most of all, I will remember Kathy as a loving and caring woman who always took time out to listen to a problem and offer some advice to ease the pressure. Kathy will be missed very much by everyone who knew her.

Larry Coffin  
Director of Intramurals

## current

Kevin A. Curtin  
editor

Jeff Lamb  
managing editor  
typesetter

Yates W. Sanders  
business affairs/ad sales

Frank Russell  
features/arts editor

Linda Briggs  
asst. features/arts editor

Daniel A. Kimack  
sports editor

Margie Newman  
photography director

Jim Pearson  
asst. photography director

Tina Schneider  
around UMSL editor  
classifieds coordinator

Marjorie Bauer  
copy editor

Laurie Bunkers  
typesetter

Cheryl Keathley  
typesetter

Jeff Kuchno  
sports columnist

Jeff Little  
circulation manager

reporters:  
Linda Belford  
Jim Goulden  
Kurt Jacob  
Daniel J. Johnson  
Kyle Muldrow  
Nick Pacino  
Norma Puleo  
Dale Smith

photographers:  
Thomas Aherron  
Roger Bates  
Bob Mrazik  
Joe Villegas

University of Missouri-St. Louis  
1 Blue Metal Office Building  
8001 Natural Bridge Road  
St. Louis, Mo. 63121  
Phone: 553-5174

The Current is published weekly on Thursdays.

Advertising rates are available upon request by contacting the Current Business Office at 553-5175. Space reservations for advertisements must be received by noon Monday prior to the date of publication.

The Current, financed in part by student activities fees, is not an official publication of the University of Missouri. The university is not responsible for the Current's contents and policies.

Editorials expressed in the paper reflect the opinion of the editorial staff. Articles labeled "Commentary" are the opinion of the individual writer.

## Letters policy

The Current welcomes all letters to the editor. All letters must be signed and the writer's student number and phone number must be included. Non-students also must sign their letters, but only need to add their phone number.

Names for published letters will be withheld upon request, but letters with which the writer's name is published will receive first preference.

Responsibility for letters to the editor belongs to the individual writer. The Current is not responsible for controversial material in the letters, but maintains the right to refuse publication of letters judged by the editorial staff to be in poor taste.

Letters may be dropped off at the Current offices, 1 Blue Metal Office Building, or the University Center Information Desk. They may also be mailed to Letters to the Editor, Current, 1 Blue Metal Office Building, 8001 Natural Bridge Road, St. Louis, Mo. 63121.



more letters

## Dancing for dollars endorsed

Dear Editor:

I would like to inform the UMSL community of a major dance-a-thon to be held for the general public and particularly for the UMSL and Washington University communities.

The dance-a-thon will be held on Friday, Feb. 10, by the Muscular Dystrophy Association at Washington University's student center. The dance will have a live D.J., free food, and a large screen video to include Michael Jackson and other top performers. T-shirts, jackets and coolers will also be given away as attendance prizes.

Both singles and couples can participate in the 12-hour marathon dance and those who do not wish to dance for the entire length of time can attend as they would for other dances.

This is the ninth annual dance-a-thon sponsored by MDA. Proceeds from the event help to fund research and treatment for the 40 neuromuscular diseases that affect hundreds of thousands of Americans. Last year MDA spent over \$76 million in fighting these diseases and the local dance-a-thon raised \$4,400 to go to MDA funding.

Participation dancers acquire pledges from patrons for each hour of dancing they intend to complete. For recognized organizations that participate, their dancers' amounts will go to the group's total and they can compete for a \$500 cash prize for the top fundraising organization.

I am pleased that our organization was asked to help coordinate this year's dance. I hope that the UMSL community will support this event by dancing, spectating or pledging. It is a perfect opportunity to have a good time, help a worthy cause and possibly win some nice prizes as well.

Registering to dance and acquiring pledges should be done immediately. Anyone interested in dancing, contributing pledges or obtaining more details, look for the notices on campus or call 423-2366.

Again, the date is Friday, Feb. 10, at 8 p.m. in the Washington University student center.

Ken Eckert  
Pi Kappa Alpha

## Education budget increases

WASHINGTON, D.C. (CPS) — After months of wrangling, Congress has finally passed a new federal education budget for the 1983-84 school year that, if President Reagan agrees to it, will mean more federal funding for most college programs — including student aid — for the first time in three years.

"The overall picture (for federal student aid) is much more favorable for 1984," according to Charlie Saunders, governmental affairs chief for the American Council on Education.

"Congress has approved at least one-half billion dollars more than the administration asked for, and over \$400 million over last year's financial aid budget," he reported.

Funding for Pell Grants, for instance, will increase from \$2.4 billion for fiscal year 1983 to \$2.8 billion this year. Under the new budget, students' maximum Pell Grant award will increase \$100, from \$1,800 to \$1,900.

Supplemental Educational Opportunity Grant funding will rise by \$14.6 million, and State Student Incentive Grants by \$16 million.

Not all aid programs got more money, or even escaped cuts.

College Work Study funding will decrease from \$590 million to \$550 million this year under the new congressional funding package.

National Direct Student Loan funds, moreover, will fall nearly \$18 million, from last year's \$178.5 million to \$161 million.

"We're very pleased we came out with higher figures in the areas we did," explained Dallas Martin, executive director of the National Association of Student Financial Aid Administrators. "The increase in the Pell Grant award to \$1,900 was very much needed."

"And the SEOG and SSIG programs are at last restored from the previous cuts they suffered," added Saunders. "On whole it's a very good budget compared to past years."

Congress has repeatedly cut college funding during the last three years, though often not as much as President Reagan asked for in his annual federal budget proposals.

The president recommended shallower education cuts in his most recent budget proposals last February.

The new budget will cover the fiscal year that started Oct. 1, 1983, and will end Sept. 30, 1984.

But "It doesn't put us where we should be," Martin said. "We're just back to our old 1980 levels. As costs have gone up, we still don't have any more money. But at least we're level."

Aid officials stress they're ready to start lobbying for more.

"The nation is concerned with the present education system, especially with all the national reports pointing out some of the problems we have," Saunders observed.

"The administration itself seems to be changing philosophy from making big cuts to at least holding the line on student aid."

With an election year ahead, Reagan is trying "to shed the blame" for student aid cuts, and is "running for cover" by boosting some of the same programs he's tried to cut over the last few years, Saunders asserted.

"I think we've finally passed the cut-cut philosophy," agreed Martin. "There just wasn't the fat there (in financial aid programs) that many people suspected."

Martin doesn't foresee "any major infusion of money into financial aid like we saw in the '70s," but rather "a slow, gradual rebuilding" of aid programs.

For now, though, the new 1984 budget, which Reagan is expected to sign soon, means "there will be significantly more aid money available next year, and that awards will be made more promptly and notification will be made earlier," Saunders said.

## Job fair for students to be held

Employers looking for qualified part-time workers and students who need jobs in order to continue their college studies will have an opportunity to talk to each other during a three-day employment fair to be held Feb. 21 through 23 at UMSL. During last year's three-day fair, interviewers from more than 40 companies and organizations talked to approximately 500 students. The event is sponsored by UMSL's Student Work Assignment Program.

The program on Tuesday, Feb. 21, will feature a film, "The Campus Interview," and a panel discussion from 11 a.m. to 1 p.m. in Room 75 J.C. Penney Building. Panel participants will be John Rencher, associate superintendent of personnel, St. Louis Public Schools; Dorene Novotny, senior personnel associate, UMSL; Wyndel E. Hill, manager, Personnel Administration/Wholesale Operations Division, Anheuser Busch Cos. Inc.; Robert Fischer, district personnel manager, J.C. Penney Co.; and a representative from Union Electric Co.

On Wednesday, Feb. 22, representatives from various St. Louis businesses will be in the University Center Summit lounge to

conduct interviews for part-time, temporary, summer and full-time positions from 10 a.m. to 2 p.m.

On Thursday, Feb. 23, out-of-state and St. Louis area camps will send representatives to interview students interested in summer, part-time, permanent and temporary positions. Hours will be 10 a.m. to 2 p.m. in the University Center Summit Lounge.

Employers interested in being represented at the 1984 Student Employment Fair may contact Robert Powell, coordinator of student job development, at 553-5317.

## STEREO REPAIR

Needles — Accessories — Parts

UMSL IDs SAVE 10% ON REPAIRS!

**audionics inc.**

428-4848

8509 Natural Bridge Rd.

200 ft. East of Hanley

## Delta Sigma Pi

Eta Nu Chapter

**will hold introductory meetings**

Friday, Jan. 27, at 1:15 p.m.  
in 205 SSB

and

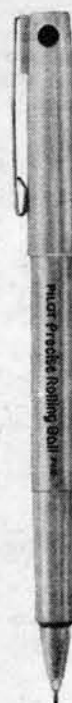
Thursday, Feb. 2, at 1:00 p.m.  
in 229 J.C. Penney

**Come and find out more about the Coed Business Fraternity on the UMSL Campus. We think you'll like what you see.**

Refreshments will be served

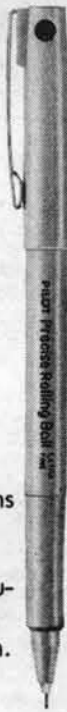
—Delta Sigma Pi—  
The Coed-Professional Business Fraternity

NOW PILOT IS  
TWO POINTS UP  
ON THE  
COMPETITION.



FINE.  
THAT'S MY POINT.

EXTRA FINE.  
THAT'S MINE.



If you love fine writing, now you can choose between two Precise Rolling Ball pens that write so fine yet flow so smoothly you'll wonder how we made it possible.

Only The Precise allows you to write beautifully in either fine point or extra fine point.

The price? It's even finer. Only \$1.19 each.

PILOT PRECISE ROLLING BALL PENS.  
2 OF THE FINER THINGS IN LIFE.

**PILOT** precise  
Rolling Ball



**around UMSL january****20****Friday**

● The University Program Board Film Series opens for the semester by presenting "The Star Chamber," starring Michael Douglas, Hal Holbrook and Sharon Gless, tonight and tomorrow night, at 7:30 and 10 p.m. in Room 101 Stadler Hall. Admission is \$1 for students with an UMSL ID and \$1.50 for the general public.

● The University Players will hold auditions for Paul Foster's "Tom Paine" from 2:30 to 4:30 p.m. and from 7 to 9 p.m. in Room 105 Benton Hall. Parts for six men and five women will be cast. The production dates are March 2, 3, and 4. For more information, contact Jim Fay, the show's director, at 553-5485.

● A large-format color photography exhibit, "The Canvas and the Camera: Great Paintings in American Museums," by UMSL student Eugene Smith, may be viewed in the Center for Metropolitan Studies, 362 SSB, through Feb. 17. The gallery is open Monday through Friday from 8 a.m. to 5 p.m. For more information, call 553-5273.

Tea Party at 7:30 p.m. in Room 78 J.C. Penney. Mr. Stoeffler will discuss the topics of forced busing, taxation without representation, court ordered changes of residence and the possible removal of Federal Judge William Hungate.

● The UMSL Psychology Organization sponsors a **faculty-staff reception** from 1 to 4 p.m. in Room 357 Stadler Hall. All UPO members and psychology department faculty and staff are invited to attend.

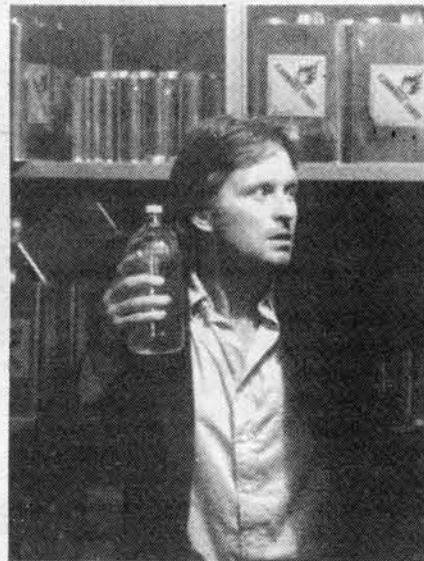
**at the movies**

"The Star Chamber" probes the question of what happens when a group of Superior Court judges lose faith in the constitutional bylaws which they have been sworn to uphold and which govern their ability to implement justice.

Michael Douglas stars as an idealistic young judge who agonizes over the legal loopholes that allow criminals to go free and is consumed with guilt when he joins the secret proceedings of "The Star Chamber."

Also starring in this contemporary story are Hal Holbrook, Yaphet Kotto and Sharon Gless.

Peter Hyams, writer/director of "Outland" and "Capricorn One," directs from a screenplay that he co-wrote with Roderick Taylor.

**24****Tuesday**

● The Libertarian Students will sponsor an **open discussion with John Stoeffler** of the National Association for Neighborhood Schools and the

**25****Wednesday**

● Peter Raven, director of the Missouri Botanical Gardens, will give a free lecture titled "The Consequences of Species Extinction" at Webster University in Winifred Moore Auditorium, 470 E. Lockwood in Webster Groves. Raven, an adjunct professor of biology at UMSL, is a specialist in plant classification and distribution. For more information, call 968-7075.

basics of archaeology, beginning today and continuing through March 14. The course will be held in Room 348 SSB from 7 to 9 p.m. For registration information, call Renee Damron at 553-5961.

● The UMSL Intramural **Kayak Club Clinic** begins for nine consecutive Wednesdays from 6 to 8 p.m. New members may join tonight or Feb. 1 for a registration fee of \$15, equipment included. For more information, call 553-6381.

● UMSL's Continuing Education-Extension offers "Archaeology: Artifact Identification," a course in the

**22****Sunday**

● Works by J.C. Bach, Stravinsky and Pergolesi are on the program for the **Kammergild Chamber Orchestra** concert at 8 p.m. at the St. Louis Art Museum Auditorium. Local mezzo-soprano Joanne Cruickshank will be the guest artist. Tickets are \$8 for reserved seating and \$5 for open seating. For ticket information, call 553-5991. Kammergild is UMSL's orchestra-in-residence.

● KWMU (FM 91) airs "Creative Aging" every Sunday from 7 to 8 p.m. This week's topics are "Chipping In At Any Age" with Luther Bellinger, corporate social responsibility director for McDonnell Douglas Corp., and "Diet Control: Make It Simple and Sensible" with Gail Becker, a registered dietician and head of Gail Becker Associates Inc. of New York.

**calendar requirements**

Material for "around UMSL" should be submitted in writing no later than 3 p.m. Friday of the week before publication to Tina Schneider, around UMSL editor, Current, 1 Blue Metal Office Building, 8001 Natural Bridge Road, St. Louis, Mo. 63121. Phone items cannot be accepted. Material may be edited or excluded to satisfy space or content requirements.

**classifieds****Miscellaneous**

Was getting in shape your New Year's resolution? Learn about physical fitness and how to design a fitness program for YOU and for your lifestyle by enrolling in P.E. 134, Personal Physical Fitness. This three hour elective may change your life. Call 553-5220.

Can't seem to find time to exercise? Noontime Conditioning Exercise Class may be what you need. Two locations: Mark Twain Building, Room 221, M/W, and Marillac Campus, auditorium stage, T/Th, 12:15-12:45. Starts Jan. 23 and runs through April 19. Cost \$18 for two days/week, \$30 for four days/week. Call 553-5220 for registration information.

Job opportunities: noontime exercise instructor. Mark Twain Building, M/W 12:15-12:45 and/or Marillac Campus, auditorium stage, T/Th 12:15-12:45. Pay negotiable, dependent on experience and enrollment. Call 553-5220.

If you are ready to make a real commitment to fitness, challenge yourself to AEROBIC DANCING, Mark Twain Building, Room 161, 5:15-6:30 p.m. This program includes flexibility and strength exercises and 30-45 minutes of aerobic dance with conscious relaxation. Instructor: Gail Greenwald. Call 553-5220 for registration information.

Experienced in typing term papers, theses, projects, proposals, dissertations, etc. \$1 per page — \$1.50 per page graphs, figures, tables, etc. Papers 100 pages or more will be negotiated to a lower price per page. Call Mrs. Joanne Key at 352-7599.

The Hawthorne Players will hold open auditions for "The Man Who Came To Dinner" Jan. 23 and 24 at 7:30 p.m. at the Florissant Civic Center Theatre, Parker and Waterford roads in Florissant. Parts for 10 men and 15 women will be cast. The production dates are March 30 and 31 and April 6 and 7. For more information, contact 524-1204 after 6 p.m.

Abortion Service: Confidential counseling, pregnancy test, pelvic exams. Reproductive Health Services — The oldest, most respected name in problem pregnancy counseling and outpatient abortion services in the Midwest. Call 367-0300 (city clinic) or 227-7225 (west county); toll-free in Missouri 1-800-392-0888.

Student Resume Specialists! Call Resumes That Work today! Free cover letter with every resume. Interview coaching available. 727-9577.

This body was made to move. Plan to move this semester. Aerobic dance, noontime exercise class, fitness trail, swimming, racquetball, tennis, intramurals. For information, call 553-5220.

Math Club Open House! Come celebrate the beginning of the winter semester with us and find out more about the Math Club. On Tuesday, Jan. 24, from 9 a.m. to 3 p.m. in 301 Clark Hall.

Did you think about joining a fraternity last semester but were unsure? Find out about Sigma Tau Gamma fraternity in a relaxed unpressured atmosphere at our Rush Party this Friday at 8:30 p.m. Free refreshments! Live D.J.! For info, 427-9364 or 928-0324.

New students: Peer Counselors are fellow students lending an ear for your concerns. Check out our Career Library or our workshops on Career Exploration, Time Management and others. And if you don't know where to go for something, ask us. All are free services. For more information, visit us 8 to 5 in 427 SSB or call 553-5370.

Advanced and beginning karate classes being offered this semester. Classes begin Jan. 26 from 7 to 9 p.m. and each subsequent Thursday. For more information, please call Sandy or Mary at 553-6183.

Student Travel Rep needed to promote our annual Spring Break trips to Florida. Free trip to Florida plus commission. Please call or write: Coastal Tours, Inc., P.O. Box 68, Oak Forest, IL, 60452, 312-963-8856.

Wanted: All business majors come "meet the chapter" of Delta Sigma Pi, Friday, Jan. 27, 1:15 p.m., room to be announced.

A Math Club organizational meeting will be held Jan. 26 at 1:30 p.m. in Room 301 Clark Hall. Everyone is welcome.

Want teaching experience? PE 193 clinical experience in youth sports is for you. Three credit course meets Saturday mornings, 8:30 to 11:30. Contact Cathy Lewis, 553-5226 for further information.

UMSL Intercollegiate softball—any full-time undergraduate women interested in trying out for the UMSL varsity softball team should contact Cathy Lewis, 553-5226 for further information.

**Personals**

Sue,  
I'd like to apologize for the way I have been treating you. I really want your body!

Your Heman "Coach,"  
Bill

Bif  
Don't bring chains. They leave scars. As for Halloween, I went as Miss Universe.

Signed,  
The Fairest Cadet

Biffalo,  
You're a fraud and a copycat. A college student should be a little more original.

Signed,  
The Fairest Cadet

Delta Sigma Pi wishes to welcome back all students and to welcome all new students for the first time.

To Delta Sigma Pi:  
Welcome back, Brothers, to a new semester. Let's make it the best ever!

Porthos

Congratulations to the UMSL students who participated in the Nastar Downhill Race at Steamboat. Jeffrey Hanne winning a time a silver medal a time of 34.93 seconds. Keith Cooper winning a bronze medal with a time of 40.29 seconds.

Congratulations to the UMSL students who participated in the Nastar downhill race at Winter Park. David Guckes winning a silver medal with a time of 36.74 seconds, Doug McDonald winning a bronze medal with a time of 40.10 seconds.

R.W.  
Only one semester left for you! Let's get that squeaky front door of yours fixed before the two o'clock sirens go off.

J.R.

Delta Sigma Pi:  
Only three weeks to go.

Mr. Trench Coat by the closed bookstore on 1/12: This feels absolutely silly. For a few moments I was a bit taken with you!!! Outlandish?! No doubt you're attached. Answer here before you ask me for another "date." Caution T. deWind

The Dellwood Soccer Arena and canned salmon were things to write home about the Steamboat bus, but the story of the Muffin was the finest. Sorry about your leg, Jacquil! We'll make muffins for you — can we fold the raisins?

Kevin M. Mitchell — how's my dear old multi-talented UMKC arts editor? Hope your semester is a bowl of cherries so far. You may write that down, Godspeed, be good to yourself and write your L.C.!

**Classifieds Ads are free of charge for UMSL students and faculty and staff members. Please place your ad on the Classified Ad Forms available at the Current offices, 1 Blue Metal Office Building, or the University Center Information Desk. Include your name, ID number, phone number, and the classification under which your ad should run. Due to space limitations, only one ad per subject may run.**

**Event and meeting notices should be sent to the Around UMSL editor, Tina Schneider. The deadline for submitting ads is Friday, 3 p.m.**



# features/arts

## Willis welcomes working woes

**Linda Briggs**  
assistant features/arts editor

While other students soared down snowy hills in Colorado or left UMSL behind while toasting another new year, Barb Willis worked at her post as UMSL's Student Association president.

Sitting in her strangely quiet office in between the hustle of the fall and winter semesters, Willis described her normally hectic lifestyle. A chemistry major with a minor in mathematics, Willis will graduate this spring. She works in the mathematics department and in the Center for Academic Development. Currently, she is doing research having to do with organic chemistry.

"Assuming the role of Student Association president means working 30 to 40 hours a week, including Saturdays and Sundays, along with keeping another job and taking classes on a part-time basis," she said. "The second semester will calm down considerably, though. I'll be finishing what I started first semester."

What does Willis do as president? Many students may view her job as an honorific position. In actuality, the office of president is a demanding responsibility. Willis' duties include serving as the chairperson of the Student Association Executive Committee (an elected body of students and organizational representatives), presenting the Student Assembly a program of legislation and representing the Student Association in such areas as may require a true representative of the student body. The president also attends all commencement ceremonies during the year.

With its chaotic schedule and meager monetary rewards, why would the job of Student Association president attract anyone? "If you don't participate all you learn are subjects in the classroom. Some of my most valuable learning experiences have been outside of classes," Willis said.

"Working on a committee applies directly to working for a company. Any chair position gives insight into the corporate supervisory role," she said.

Working for the Student Association has given her the chance to see other students learn through their involvement. "I'm able to watch reporters for the Current gain experience to become journalists. I can watch University Singers train for supervisory roles in the music world by working for student government. It's not only my experience. I'm involved with everyone else in learning and having a good time," she said.

Although her youthful looks are deceiving, Willis is an older student who has had previous experience at college and in the job market. After working at Multidata Systems International Corp. as a customer support manager where she designed computer software and dealt with customer support of medical computer systems, Willis felt a need to return to school to obtain her bachelor of science degree. She received an associate's degree from St. Louis Community College at Forest Park in 1973 in radiological technology.

"I'd gone as far as I could in the company with promotions and was told that I needed a bachelor's degree to go any further," she said.

So she came to UMSL in 1980, started in the degree program in chemistry and became involved in the University Singers. She could have been one of a number of students who drive to school, attend classes and return home. But Willis could not see that kind of lifestyle for herself. "I think you get out of college what you put into it," she said. "I thought there had to be a better way. Not that I thought I could change the world, but I wanted to be involved."

While active in the University Singers, Willis decided to volunteer as representative to the Student Assembly. This step marked



Margie Newman

**FIRST LADY:** Barb Willis manages to fit in the hectic pace of being UMSL's Student Association president into her already busy lifestyle.

her initiation into student government. She was elected Student Association president last April and took office in May.

Willis doesn't see her age as an advantage or disadvantage. "Since UMSL has a good cross-section of students, my age is nothing unusual. There are students of all ages at school and on the association," she said.

"I'm able to set goals and meet them — which is no different than anyone. Younger students may find it more difficult to sacrifice social time. At this point in my life, since I'm not married and I have no children, and I'm willing to give up many social events, the busy schedule works out fine."

Although Willis seems to be running non-stop with school and work, she does pursue outside interests. With what little spare time she has, she plays piano — a talent she's been perfecting since she was six years old. Willis also enjoys singing and has performed with the St. Louis

Bach Society at such functions as the Candelight Concert at Powell Symphony Hall at Christmas and Easter.

She is an avid Agatha Christie fan and has read all of her books. "There may be one or two that I haven't read, but I doubt it," she said. "I love good who-dun-its." Science fiction is a favorite, although she cited no particular authors. "I like a wide range of science fiction stories. There have to be good theories behind the storylines," she said.

Willis sees her administration as advocating an open-door policy. She would like all students to feel free to come to her with problems or suggestions. During her term, she has increased lighting on campus and she hopes that she has heightened communications — with the student body, with student government, and to students through the Current. An ongoing project has involved investigating the student retention problem. During

the next semester, she plans to survey students to discover the reasons for declining enrollment.

Another matter, unrelated to academic affairs yet high on her list of accomplishments, has to do with a successful weight loss campaign that she launched during the past year. Willis prides herself on shedding 106 pounds, and most importantly, in maintaining the loss.

With the same hard-nosed philosophy that she applies to everything else, she laid out the ground rules for her diet. "A psychological change must take place. To feel better about the self, you have to find out why the weight was gained. Then you must find the reason that the weight must be taken off. After shedding the pounds, you must remind yourself, 'I never want to be overweight again,'" she said.

Shifting topics once more to university affairs, Willis outlined her prospects for UMSL's future. She sees public higher education undergoing changes within the next 10 years. Funding from state sources inevitably will change, she said. UMSL will have to imitate private institutions by integrating more fund-raising programs.

With enrollment decreasing, students getting older as the baby boom population ages, and older women coming back to school in greater numbers, the whole complexion of the university will change, she said. There will be a broader range of students, which will affect course offerings. "UMSL probably has a few rocky years ahead, but I think it's equipped to handle any turbulent times," she said.

As far as her own future goes, Willis is more reluctant to reveal plans. "I hope to go to a graduate or professional school. Someday, I would like to be in a research academic atmosphere," she said.

With people beginning to fill her office for a meeting and the phone adding to the distractions, Willis dropped contemplation of the future, to attend to the business at hand.

## 'Gandhi,' 'Right Stuff' top critic's 1983 film list

**Frank Russell**  
features/arts editor

In honor of UMSL's 20th anniversary, here are my favorite 20 films of 1983.

A number of these films may have been on other critics' 1982 lists but they are included here as they were released in St. Louis during the past calendar year. Also, only English-language films are included as foreign films are typically released rather haphazardly in the area.

Being a part-time critic, I was not, of course, able to see every good film released during 1983. A number of films — "The Draughtsman's Contract," "The Grey Fox" and "Daniel," for instance, may have made this list if this critic had had a chance to actually see them.

Here goes.

### 1. Gandhi

Winner of last year's Academy Award for best picture, "Gandhi" has already been well-praised in this column.

Richard Attenborough's epic focus on one of history's greatest men will be long remembered, especially for Ben

Kingsley's inspired portrayal of the Mahatma.

## film

### 2. The Right Stuff

Director Philip Kaufman's adaptation of journalist Tom Wolfe's novel about the astronauts of the Mercury and Gemini space programs was a stunningly visual film; it also included excellent performances by a number of actors, particularly playwright-actor Sam Shepard as test pilot Chuck Yeager.

### 3. Sophie's Choice

Meryl Streep and Kevin Kline were both resplendent in this strikingly stylized version of William Styron's novel.

### 4. The Big Chill

Lawrence Kasdan's direction and the excellent ensemble acting of, among others, William Hurt, Kevin Kline, Glenn Close, Jobeth Williams and Jeff Goldblum well made up for whatever minor flaws this film had.

### 5. Zelig

Woody Allen's 1983 effort may not have been his best effort to date, but the unique editing and special effects that allowed Allen to be the central character in a fictional historical documentary was, in one word, magical.

### 6. Return of the Jedi

The third installment in George Lucas' "Star Wars" saga was not quite as tight as its predecessors, but still offered some breakthrough special effects work by Lucasfilm Ltd. subsidiary Industrial Light and Magic.

### 7. The Year of Living Dangerously

Mel Gibson, Sigourney Weaver and newcomer Linda Hunt gave superb performances in director Peter Weir's romantic adventure. This is a film not enough filmgoers have seen, and one that you should definitely watch for.

### 8. Say Amen, Somebody!

This gospel music documentary, much of which was filmed in



**ALL THE RIGHT STUFF:** The second best film of 1983, according to film critic Frank Russell, had just that. Sam Shepard starred as Chuck Yeager in Philip Kaufman's "The Right Stuff."





**BEST OF 1983:** Richard Attenborough's "Gandhi" receives top honors in film critic Frank Russell's year-end review. Martin Sheen (left) and Ben Kingsley starred in the film epic.

## Film

from page 7

St. Louis, was the surprise find of the year. This is another worth seeking out; a soulful, good time is guaranteed for all but the most cynical.

### 9. Risky Business

Most films of the teen-age sexual discovery genre would be laughed right off most critic's year-end list but Paul Brickman's preppy fantasy was something different — intelligently and creatively written and directed, with a very appealing lead performance by Tom Cruise.

### 10. Eating Raoul

Paul Bartel's macabre comedy missed a lot of audience attention in its limited theatrical run a few months ago, but is currently making the rounds of the cable movie channels.

While not taking itself too seriously, "Eating Raoul" is a wonderfully made little comedy, but definitely not for everyone's taste. I don't want to ruin this sweet and sour delicacy, but I will say this — the title can be taken literally.

The top 20 list rounds out as follows: 11. "The King of Comedy," 12. "Trading Places," 13. "Frances," 14. "Educating Rita,"

15. "Gorky Park," 16. "Never Cry Wolf," 17. "Terms of Endearment," 18. "Betrayal," 19. "Silkwood," and 20. "Come Back to the Five and Dime, Jimmy Dean, Jimmy Dean."

There it is; I hope the list has been eclectic enough. After all, how many critics would include together in their top 10 "Zelig" and "Risky Business," "Gandhi" and "Eating Raoul," "Say Amen, Somebody" and "Return of the Jdei," and leave off "Terms of Endearment," possibly the most overrated film of the year?

Finally, let me welcome Nick Pacino to the Current arts staff; his reviews of classic films will usually accompany mine of more recent efforts.

# KETC Colman night well worth watching

**Nick Pacino**  
film critic

In the St. Louis area there is an abundance of vintage films available to the public, through such sources as the St. Louis Art Museum, many libraries and television. I will present critical previews of some of these movies, as advance notice is provided.

Since this is my initial column I should explain what, in my opinion, constitutes a movie classic, as this is the standard by which I assess a film. One essential requirement is that it should have a vibrant spirit, one which reaches out with a theme of deep fascination to an audience; a theme which evokes universal concern, such as "From Here to Eternity" (1954), which portrays war on a personal level, with revulsion, causing one to feel the need for peace.

"It's a Wonderful Life" (1946) shows the importance of one human to humanity; our institutions of law, education and society, and what involves their advancement can be seen in such classics as "Twelve Angry Men" (1957), "Goodbye Mr. Chips" (1938), and "Gentlemen's Agreement" (1947); "The Story of Louis Pasteur" (1938) vividly demonstrates the compensation for human struggle.

Classics of drama invigorate and arouse compassion; comedies provoke laughter, as well as inspire. The system for rating the movies previewed in this column is obviously an arbitrary one — Classic; Near Classic; Good, But Not Classic; and Far From Classic — with no pretense that these are the decisive verdicts on any film. They simply represent a personal opinion, influenced by a sincere affection for the vintage film genre.

I hope to present enough information to conduct the reader through the maze of fair-to-middling films toward the classics. This is more easily said than done, as most movie production has been intentionally slanted more for the call of the marketplace rather than the aesthetic.

One personal note before I proceed with the promised purpose of this column: My wife Eileen and I share an active fondness for

vintage films, as well as critique, with relish, all that we watch. Even though my original proclivity to add her name to this journalistic endeavor was graciously declined, her continuing contribution is affectionately acknowledged.

This Saturday, KETC, Channel 9, is presenting a Ronald Colman double-feature night with "A Tale of Two Cities" at 8 p.m. and "The Prisoner of Zenda" at 10:30 p.m. English-born Colman, who died in 1958 at age 67, was one of Hollywood's most popular romantic stars and one of the rare cinema idols to make a successful transition from the silent screen to talking pictures.

Urbane, stately and courteous, Colman represented an ideal of well-bred class. "A Tale of Two Cities," released by MGM in 1935, was based on Charles Dickens' 1859 historical novel about the French Revolution, and was beautifully adapted to the screen by director Jack Conway. He successfully relied on physical action to span the interval differences between Dickens' literary mode and those of the screen, resulting in a prodigious production of Dickens' view of the 1770s French Revolution.

Colman displays one of his most impressive performances as Sidney Carton, a ne'er-do-well, lonely lawyer, who for the love of a woman, trades places with her husband, a hated aristocrat scheduled to be tried and executed.

This film rendition makes real and vivid the events of the Reign of Terror, where historical incidents create a lavish background for the many adventures of the colorful characters. There are outstanding scenes of the famished peasantry rioting for food, a sham trial before murderous judges, and a memorable sequence on the fall of the Bastille.

The supporting cast, led by Elizabeth Allen, the love interest, Donald Woods, her husband, and Basil Rathbone, an aristocratic scoundrel, is generally excellent, but the picture primarily belongs to Colman. As

See "Colman," page 9

## Automation

by A. Ward



TODAY OUR GUEST IS DR. GETSUM POUNSOFF, HEAD OF THE FAMOUS DIET CLINIC.

DR. POUNSOFF, TO WHAT DO YOU ATTRIBUTE THE ENORMOUS SUCCESS OF YOUR PROGRAM?

I MAKE IT A POINT TO GET STUCK IN TRAFFIC JAMS - IT WEARS MY PATIENTS THIN!

EBB PHOTO

## HYPNOSIS

Individual Sessions by Appointments

**Free Seminar on Hypnosis, Third Saturday of Every Month**

Self Hypnosis Tapes Available

Clark Burns — Clinical Hypnotherapist — 521-4652

## The Old Country Busch Gardens AUDITIONS

Come to  
☆ Busch Gardens  
- and "Come to Life."

Busch Gardens - The Old Country, America's European theme park is conducting auditions for dancers, singers, musicians, variety artists, actors, technicians and supervisors. You could be part of the Busch Gardens magic. So get your act together and "Come to Life" at our 1984 Auditions.

Audition Dates:

**St. Louis, MO**

Sunday, Feb. 5, 12—6 p.m.

Marriott Pavilion Hotel  
1 Broadway at Chestnut  
Pavilion Suites 1, 2, 3



**BUSCH GARDENS**  
THE OLD COUNTRY  
WILLIAMSBURG, VA

An Equal Employment Opportunity/Affirmative Action Employer, M/F/H

## TUTORS NEEDED

Openings for tutors in CAD Math Lab, Math 02, and Tutorial Lab for Winter 1984. Contact CAD Office, 507 Tower, 553-5194, for details and application.

Instructional labs of the Center for Academic Development will be open according to the following schedule in Winter 1984:

Mathematics Laboratory	425 SSB	Mon-Fri Mon, Tue, Wed	8am to 3 pm 5pm to 9pm
Reading Laboratory	409A SSB	Mon-Fri	9am to 3pm
Writing Laboratory	409B SSB	Mon-Thurs Friday Tues, Wed	9am to 3pm 9am to 2pm Evening TBA
Tutorial Laboratory	304 SSB	Mon-Fri Mon, Thurs	9am to 1pm 9am to 7pm

For information about Center services call 553-5194.



# Colman

from page 8

Carton, facing the dreaded guillotine, Colman utters those distinct lines that would be used by mimics for the next 40 years: "It is a far, far better thing that I do than I have ever done; it is a far, far better rest that I go to than I have ever known."

"A Tale of Two Cities" was previously produced as a silent film in 1917, subsequently by the British in 1958, and later as a recent television movie; but the 1937 production was certainly the classic, and is highly recommended.

"The Prisoner of Zenda," released by United Artists in 1937, was not as lavish an epic, but easily qualifies as a Near Classic. Director John Cromwell, highly regarded for his perceptive film narratives, has provided a bountiful costume production with superb performances by a talent-filled cast.

Colman is a king's lookalike cousin, who reluctantly agrees to impersonate his royal relative, when the actual monarch is kidnapped by a band of brigands, led by usurper Raymond Massey

and his henchman, Douglas Fairbanks Jr. Colman, as the bourgeois imposter, falls in love with the king's betrothed, Madeleine Carroll, much to the chagrin of his regal watchdogs, played handsomely by David Niven and Sir C. Aubrey Smith.

This film's original popularity was undoubtedly enhanced by the then-sensational news account of England's King Edward VIII, abdicating his crown in 1936 to marry the American widow, Mrs. Simpson. As the Duke of Windsor, he married her in 1937, the same year "The Prisoner of Zenda" was released.

When David O. Selznick initially produced this movie, he ended it as novelist Anthony Hope did — with a parting of the lovers; Carroll as the betrothed princess, and Colman the fake king. But the movie house owners complained so vehemently that the parting was eliminated from the follow-up prints. "The Prisoner of Zenda" was skillfully remade in 1952, but flopped when produced as a comedy in 1979.

Tune in next week for previews of Spencer Tracy's "Northwest Passage" and "Edison, the Man."

## It's the voice that's important, not just the things that it says

Linda Belford  
columnist

The voice came back. It was gone for a while or maybe I was too busy to hear it. It came back in the form of a fantasy while I was cleaning out the refrigerator.

The fantasy is I'm kidnapped by the Mafia, sold into guerrilla warfare, become a morphine addict, and eventually make it back to the States all by the time I'm 21. My only problem now is communicating. It's the most bizarre fantasy I'll admit to having. I'm not proud of it. It's just there. I don't think it's good, but I'm not going to trip on it.

It has many little details, and I can play variations on its theme, which is, I think power — my power to shut out things I don't like. If I could survive being a morphine addict, and if I was as tough as a guerrilla and had that knowledge of staying alive, nothing would get to me. That is, nothing. No wonder I'd have a problem communicating.

I don't want to talk about my fantasy. I want to talk about the voice. It's the same voice I had when I was a little kid and used to talk to myself whenever we'd take long trips, or when I'd have to hang out the clothes, or do the dishes. It kept me company. I once wrote an entire play in my

head while mowing the lawn. The voice is the deepest part of me, the part that absorbs everything. And it never lies.

### traversing the rue

When I was 12, I remember being afraid to grow up. My mom said these would be the best years of my life. I wouldn't believe her. I thought, "No way am I going to let these be the best years of my life." And then when I was 18 and living with my father, I thought, "See, I'm right, nothing's really changed." I still think and feel the same as I did when I was 12.

But I think she meant something I'm just beginning to understand. Something about the masks we have to wear to make it through each day. Something that kids don't have to deal with because any of their odd behavior can be marked down as youth.

My mother was and is a religious "fanatic." In other words, she chooses to live in accordance with some things she feels strongly about. It was never a well-received religion, not by my relatives, my neighbors, the kids at school, and

especially not by my father. It's taken me a long time to deal with the hatred I have toward this whole part of my life.

I'm beginning to realize things about my mom, that she has a lot more guts than a lot of people who are well-received in society have. She's never given up or lessened the intensity of her beliefs under any circumstances. She's a very quiet person, but she isn't silent. She refuses to wear masks.

In a sense my mom's religion is her voice. She knew that at 12 it's easier to listen to your voice and not be ridiculed than it is when you're an adult.

When I first came to UMSL, I signed up for Short Story Writing. My father said, "Why are you taking it? Is it going to help you get a job?" I said, "Well, uh, well see, I can get a Writing Certificate, and a lot of businesses need people who can write." My voice never wanted to go into business; I just wanted my father's support.

I wish I lived in a more vocal society. There'd probably be a greater chance of the truth coming out. When I first decided to write this, I didn't want to use my fantasy because I thought it would be too self-revealing. But that's the way it came out in my head and my journal, so I decided that's the way it would be.

**Write features for the Current. Call Frank or Kevin at 553-5174**

### Camp Counselors Reform Jewish Residential Camp

July 23-August 13, 1984

Campsite 50 miles west of St. Louis  
Salary range \$300-\$500

For application and information  
Call 432-0200, ext. 758, Alice Davis  
Central Agency for Jewish Education

There's more to do in snow than ski.



## HOT DOG

...THE MOVIE!

AN EDWARD S. FELDMAN PRODUCTION "HOT DOG...the movie" BY DAVID NAUGHTON  
PATRICK HOUSER · TRACY N. SMITH · JOHN PATRICK REGER · FRANK KOPPALA · SHANNON TWEEDE  
DIRECTOR OF PHOTOGRAPHY CHRISTOPHER W. KNIGHT · EDITOR MIKE MARVIN · PRODUCED BY PAUL G. RYAN · EXECUTIVE PRODUCERS PETER BERNSTEIN  
PRODUCED BY MIKE MARVIN · WRITTEN BY EDWARD S. FELDMAN · DIRECTED BY PETER MARKLE

**2ND WEEK**

**CHESTERFIELD MALL**  
HWY 40 & CLARKSON RD.  
532-0155

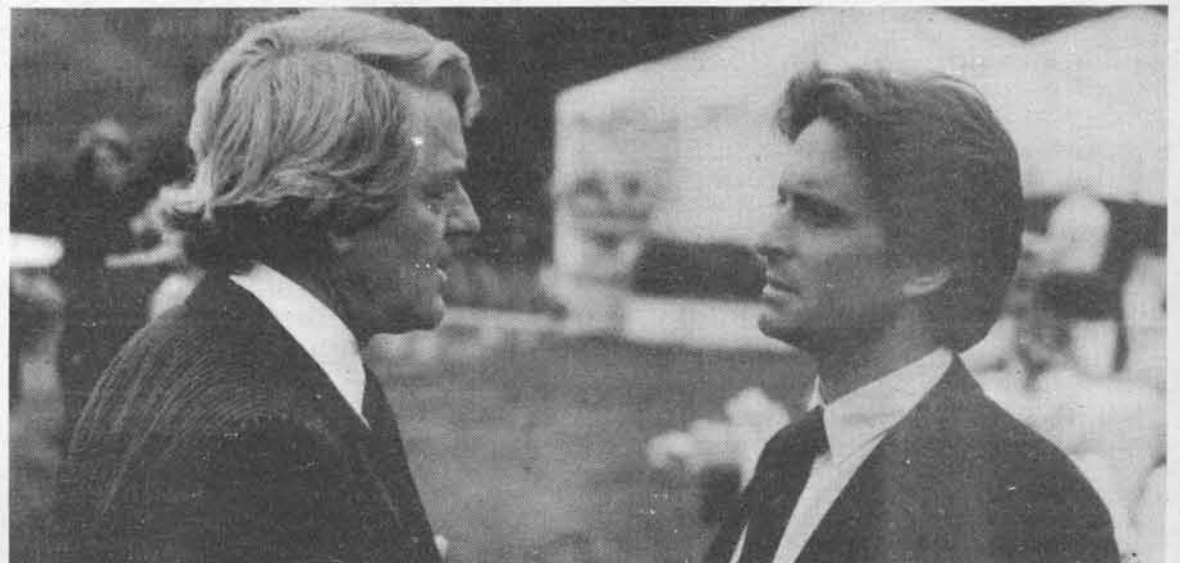
**CINEMA 4 CENTER**  
ST. CHARLES, MO.  
946-6181

**CYPRESS VILLAGE**  
10951 ST. CHAS. PK. RD.  
291-2822

**DES PERES 4 CINE**  
1-270 & MANCHESTER RD.  
822-1555

**HALLS FERRY 8**  
1-20 & NEW HALLS FERRY  
355-2711

**RONNIE'S 8 CINE**  
LINDS. & BAPTIST CH. RD.  
843-5335



**WINTER FILM:** Hal Holbrook (left) and Michael Douglas star in "The Star Chamber," the first film of the University Program Board winter film series. The feature will be presented Friday and Saturday at 7:30 and 10 p.m. at 101 Stadler Hall. The series continues with "Mr. Mom" Jan. 27 and 28, "Staying Alive" Feb. 3 and 4, "Breathless" Feb. 10 and 11, "Vacation" Feb. 17 and 18, "Flashdance" Feb. 24 and 25, "Risky Business" March 2 and 3, "The Dead Zone" March 9 and 10, "Blue Thunder" March 16 and 17, "Spring Break" March 23 and 24, "All the Right Moves" April 6 and 7, "Zelig" April 13 and 14, "Never Say Never Again" April 20 and 21, and "The Big Chill" April 27 and 28.

### BROADCAST YOUR FEELINGS ON THE ELECTRONIC NEWS NETWORK!

This year let him/her know how much you really care — send your Valentine message electronically. For a mere \$2.00, your message will appear on the ENN board over and over again one day between February 6 and 14, 1984. Select your words carefully to fit in the grid below. Once you have written your missive, bring it, and \$2, to the Student Activities Office, 250 University Center by noon on January 24, 1984.

Be clever as you like, but keep it clean! (You know what I mean!) You'll take a short hike, if it's obscene!


One character per square.

### LEAVING COLLEGE?

Control Data Institute recommends that you stay and earn your degree. But if we can't change your mind, we can at least help you take advantage of the college work completed so far.

Through a new approach to individualized instruction, Control Data Institute can help you get the training you need to seek a career as a Computer Programmer, Operator or Computer Technician.

**CALL (314) 534-8181**

and learn how the world of computers could be your world, too.

**CONTROL DATA INSTITUTE**  
an education service of CONTROL DATA CORPORATION

**Des Peres Hall  
3694 W. Pine  
St. Louis 63108**



# sports

## Cagers still hoping

**Daniel A. Kimack**  
sports editor

The basketball Rivermen, 5-8 overall, 0-2 in the Missouri Intercollegiate Athletic Association, aren't quite where Coach Rich Meckfessel thought they would be.

"If you had asked me in July," the second-year mentor said, "I would have said we'd be about 7-1 or 8-5."

The victory shortage, however, has not dampened Meckfessel's outlook, even though his 5-13 club from last season (participants in the MIAA post-season tournament) was 6-7 at the same juncture.

"The worst part of the schedule is behind us," Meckfessel said. "We played some of our most difficult games and now we can look forward to more home games than road contests."

Some of the "most difficult games" included early losses to Division 1 schools University of North Carolina-Charlotte and the University of South Carolina. More recently, formidable competition has included College of the Ozarks, University of Mis-

issippi, Southeast Missouri State University and Central Missouri State University.

The latter four teams were victors over the Rivermen during the school's Christmas break — a break that saw the Rivermen win only two of six games.

"I really thought we were a couple games better than that," Meckfessel explained.

Injuries, primarily, have kept Meckfessel and company from being a couple of games better than their sub-.500 record.

Most notably, senior guard Carlos Smith has been hampered all season with a hamstring pull. The 5-foot-8, 148-pound playmaker has yet to return to 100 percent, even though he was voted the MIAA player of the week, ending Jan. 9.

Kurt Berg, a 6-foot-6, 195-pound center, suffered a broken hand early on but has returned to action. Berg, a two-year starter, is 100 percent physically, Meckfessel said, but the senior is still rusty due to the lack of practice.

"As for Smith," Meckfessel noted, "he hasn't played well as often as he, or we (the coaches), expected. But that's attributable

to his injury."

Smith, who was pushed for All-America honors at the beginning of the year, injured the hamstring before the Rivermen started practice. He then reinjured himself just before the first game, and again during the Mississippi contest.

Though hobbled, Smith is the second-highest UMMSL scorer this year with 157 points. He trails only guard Bob McCormack with 177.

"Smith's value isn't just in points," Meckfessel added. "His absence has had an effect. But it isn't so much his physical absence — it's the unsettling effect. People just can't fit into roles quite as well with him in and out of the line-up. The same is true with Berg.

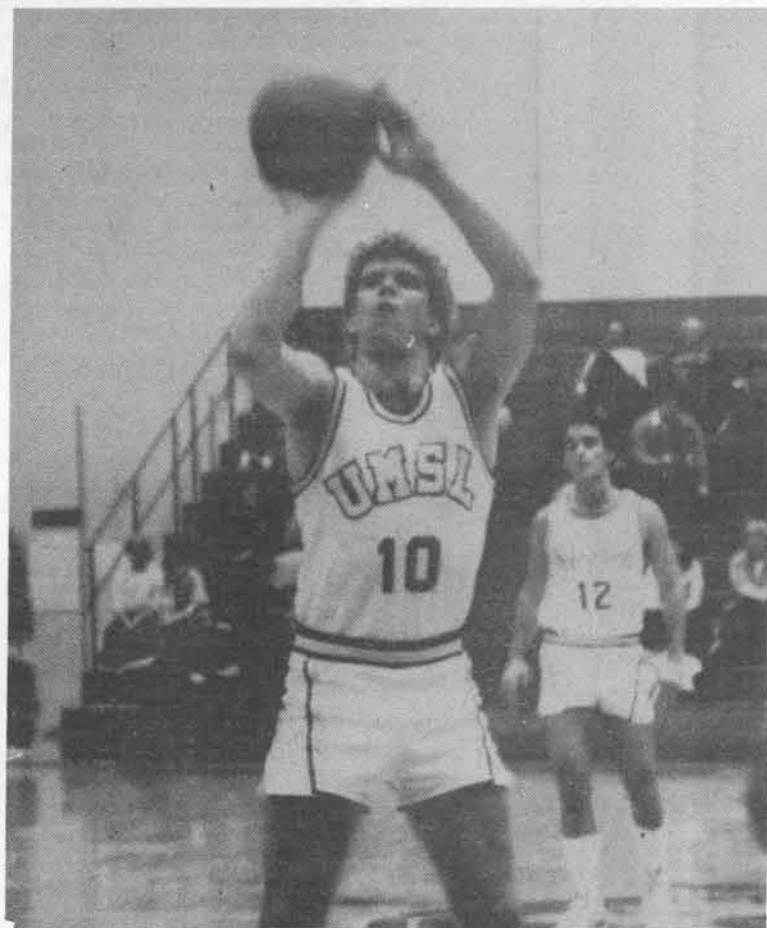
"We just haven't had a chance to put all the pieces together yet."

Following is a synopsis of Rivermen action during the holidays and semester break:

**College of the Ozarks 69, UMMSL 62**

Ozark (1-4) extended a 31-30 halftime lead to defeat UMMSL

See "Basketball," page 12



Jim Pearson

**CHARITY SHOT:** Bob McCormack (10) hits the front end of a one-and-one. McCormack is one bright spot in the Rivermen's season. Frank Cusumano (12) anchors the defense.

## Larson, women cagers tip-off Second Season

**Daniel A. Kimack**  
sports editor

It's about that time — time for the Second Season.

In basketball, the Second Season marks the beginning of inter-conference play for most basketball teams. The Second Season forces teams in the respective conferences to play top-notch hoops or watch their chances of post-season play dissipate.

For Coach Mike Larson and his women cagers, though, there is a new meaning for the proverbial second stanza.

"From now on," Larson said as his Riverwomen, 5-9 overall, began the Second Season with two Missouri Intercollegiate Athletic Association losses, "we're going to be a different team."

Such is the case with all the great basketball teams. Not until interconference play do teams such as Notre Dame, Kentucky, Houston, etc. seem to get together in traditional tradition.

The Riverwomen, who begin their conference schedule over the holidays and semester break, plan to mold together to improve on what has thus been an unadmirable start.

"We're going to be a much more disciplined and matured basketball team," Larson said matter-of-factly. "We have eight freshmen on the team who have had plenty of time to mature."

The Riverwomen, who have 10 conference games remaining in the MIAA, were picked to finish fifth in the conference. But Larson has alternative plans.

"At this point," Larson explained, "I thought we would

be about .500. That goal, along with winning a berth in the MIAA playoffs are still in reach, though.

"If we finish 6-6 in the conference, we'll probably show up in the playoffs. Right now, we're shooting for a fourth place standing in the MIAA."

A helpful factor in Larson's plans is the fact that six of the 10 remaining MIAA games in the Second Season will be played at home.

The Riverwomen recently finished a stint of seven consecutive road games over the semester break, and are yearning for home-court advantages.

Those seven games, which included a trip to Florida for three contests, and two out-of-town conference games, saw the Riverwomen go 2-6.

"I wrote a letter to the team,"

Larson confided, "and I explained to them all the teams we've played required 100 percent effort to beat — there haven't been any patsies in our non-conference schedule."

Following is a synopsis of Riverwomen action during the holiday semester break:

**UMMSL 70, University of Tampa 58**

Tampa (1-9) lost control of a 36-35 halftime lead over the Riverwomen as they shot just 20 percent from the floor in the second stanza.

For the game, Tampa hit just 32 percent of its shots, while the Riverwomen pumped in 53 percent.

Kandy Cassady led all scorers canning 19 points for the Riverwomen. Deb Skerik scored 17 points, and Gina Gregory and Marni Schmidt added 16 each.

The victory kicked off the Riverwomen's trip to Florida Jan. 4.

**Florida Southern University 60, UMMSL 58**

A two-point halftime deficit was insurmountable for the Riverwomen as they and Florida Southern each netted 30 points in the second half.

Southern (4-2) went 8-10 from the free-throw line in its victory, while UMMSL was two too short at 6-12 Jan. 5.

Though Gina Gregory had scoring honors in the game for UMMSL with 20 points, Cindy Galbicka and Janet Reynolds each netted 12 points for Florida Southern.

Kandy Cassady was in double figures for UMMSL with 14 tallies.

UMMSL was also outrebounded 42-32 in the contest.

**UMMSL 82, Rollins College 68**

Kandy Cassady's 25 points for UMMSL helped the Riverwomen outscore Rollins 42-30 in second half action Jan. 6, in Florida.

Cassady, 10-22 from the field and 5-6 from the line, was followed in scoring by Deb Skerik (16 points), and Marni Schmidt and Gina Gregory with 14 each.

Mary McDaniel was the game's high scorer with 26 points and 14 rebounds for Rollins, helped by Kim Shelpman who threw in 20 points.

**West Georgia University 78, UMMSL 74**

Gina Gregory enjoyed her best offensive game for the Riverwomen Jan. 7 against West Georgia scoring 32 points, but three unanswered points by Georgia in the final stanza made UMMSL four-point losers.

West Georgia, which shot only 31-71 from the field, was outrebounded by the red-and-gold, but was given to many second shots.

Kandy Cassady (18 points) and Deb Skerik (12 points) reached double-figures for the Riverwomen.

UMMSL was 28-61 from the floor, and 18-26 from the line.

**Southeast Missouri State U. 90, UMMSL 61**

SEMO had no trouble getting by the Riverwomen Jan. 11, widening a 44-33 halftime lead.

Larson said, "SEMO isn't 29 points better than us (the Riverwomen)," but a 59 percent shooting average outdid UMMSL's 46 percent from the floor.

SEMO's Sandy Heitschmidt and Virginia Blissett, along with UMMSL's Kandy Cassady, were the game's top scorers with 20 points.

Gina Gregory added 16 points for the Riverwomen, and Marni Schmidt added 10 rebounds. UMMSL outrebounded SEMO 33-28, but was outshot 79-56 as the Riverwomen committed 25 turnovers.

**Central Mo. State University, UMMSL 45**

Four players reached double figures for CMSU in its cakewalk over the Riverwomen, and the team shot 52 percent in the contest. UMMSL hit just 35 percent from the field.

Gina Gregory (16 points) and Deb Skerik (10 points) led the Riverwomen in scoring, but

See "Riverwomen," page 12

## Gettemeyers, Lewis kick way into 1983 All-America honors

**Daniel A. Kimack**  
sports editor

Three UMMSL soccer Riverwomen have been selected for the National Soccer Coaches Association of America 1983 Senior College Women's All-America Team.

UMMSL defender Jan Gettemeyer was selected for the squad's first team, while midfielder Joan Gettemeyer and forward Debbie Lewis each received third team honors. This marks the third consecutive season for the Gettemeyers to receive All-America honors, while it is the first for Lewis.

"If anybody on our team was

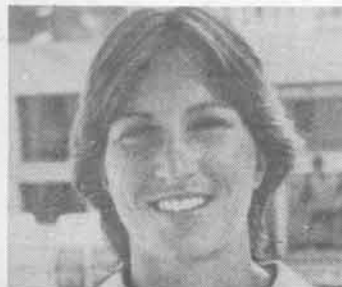
deserving," Coach Ken Hudson said, "these three were. Jan and Joan Gettemeyer carried the bulk of the load this season and Debbie Lewis was the main factor in our offense. Their leadership and ability were a definite factor in our making the playoffs and were also very helpful as a model for our younger players."

The three UMMSL stalwarts led the Riverwomen to a 13-3-2 finish last season and a third consecutive berth in the National Collegiate Athletic Association Tournament, where they bowed to George Mason University 6-2 in first-

round action. The loss prevented the Riverwomen from making final-four status for the first time in their history.

Lewis led the team in scoring with 13 goals and three assists (29 points) while Joan Gettemeyer was second on the team with 10 goals and seven assists (27 points). Jan Gettemeyer finished the season with seven goals (14 points), but her steady defense was the key to her first team selection.

The three honorees also received first-team recognition on the All-West team, voted by the Intercollegiate Soccer Association of America Selection Committee.



**Jan Gettemeyer**  
defense



**Joan Gettemeyer**  
midfielder



**Debbie Lewis**  
forward



# Skaters shoot towards third place, playoffs

**Jim Goulden**  
reporter

The UMSL hockey team is in the stretch run of its regular season, and looking forward to bettering its current position in the standings. Prior to Wednesday's game against Logan College of Chiropractics, the UMSL skaters were in fourth place, with a strong possibility of catching third-place Logan with a couple of victories.

St. Louis Community College at Meramec and Saint Louis University seemed to have locked up first and second positions, respectively. So all the UMSL icemen are hoping for a third place finish. Last year the UMSL team chased SLU all season long prior to upending the Billikens in the finals of the playoffs.

So far this season the skaters have been led by center Jim Demos, who leads the team in scoring, and by left winger Jim Laporta. Mark Starr has had a fine season in the nets, and expects to improve before the playoffs begin.

One obstacle that awaits the

hockey club, though, is one of inactivity. The team had not played since school left out before Christmas, prior to last night's game. Rick Peterson noted that this factor might play a significant role as the team battles for the playoff: "We haven't played together for a while, so we'll have to see what happens," he said.

At the Christmas break the team's record stood at 5-5, which was nothing to cheer about, but no one was really upset either. The team has had a constant struggle trying to find enough players to fill the bench on game nights, as well as trying to get a consistent team effort from everyone.

Off the ice the team has shown more success in receiving some financial support from the school. Prior to this season the team's only funds came from the players themselves, which meant that those players participating on the team were paying in excess of \$100. By getting some financial assistance the team hopes to receive more support from the UMSL student body in the form of more fan support. And perhaps more people will try

out for the team next season. With such aid from the university the team should be able to charge less next season to play, thus making the team easier to handle from a financial point. As one player said, "I think we deserve some financial support as much as some of the organizations do out here (UMSL). We are organized and hope to be a bigger part of the school in the future."

Although the remainder of the regular season games are late, the playoff games will be more reasonably timed with most of the games starting at 7 or 8:30 p.m. Although UMSL will not be the favorite heading into the playoffs, the team members certainly feel they will contend for the crown again. Last season the team lost to SLU three times in succession, but when the two met for the league championship, UMSL emerged as the victor. With this in mind there is no shortage of confidence on the UMSL team. Peterson said earlier in the season that he felt they could win again, and evidently nothing has convinced him otherwise. "We'll have to play better than we have at times this year,

but we are capable of beating any of the teams," the two-year defenseman said.

Meramec is definitely the favorite going into the playoffs: It has beaten everyone in the league once, and has some of the finest assets of any of the teams. Team members are entitled to free ice time at the Kirkwood Ice

Rink, through an agreement that Meramec has with the city of Kirkwood in which Meramec allows the city to use its campus facilities for various needs, and in exchange Meramec receives some favors from the city. Meramec also boasts the finest

See "Hockey," page 12

## Athletic, Intramural news

The UMSL women's tennis team will hold its first meeting of the 1984 season Wednesday, Feb. 1, at 3:30 p.m. in Room 219 of the Mark Twain Building.

Any full-time female student interested in trying out for the team is encouraged to attend the meeting.

For more information, contact Coach Pam Steinmetz at 553-5123.

Any full-time undergraduate women interested in trying out for the UMSL varsity softball team should contact Cathy Lewis at 553-5226 for fur-

ther information.

The Physical Education 193 class, Clinical Experience in Youth Sports, will offer teaching experience for the interested. The three-credit course meets from 8:30 to 11:30 a.m. Saturday mornings. Contact Cathy Lewis for more information.

Applications are being accepted for the UMSL Swim the Mississippi River Club at the Mark Twain Building swimming pool.



FORD DIVISION CONGRATULATES

# FORD BRONCO II



## WINNERS

Co-Rec

### SOFT SET

Larry Smith  
Craig Scognamiglio  
Michelle Robbins  
June Cox

Men

### PAPAL LYONS

John DiMariano  
Eugene Spies  
Jeff Zoellner  
Joe Welsh  
Steve Konopka  
John Slater

Women

### NET RESULTS

Lisa Geers  
Linda Meyers  
Chris Seckel  
Carmen Nanawa  
Jane Crespi  
Pam Steinmetz



# VOLLEYBALL CLASSIC

Official Vehicle of the U.S. Volleyball Association



FORD BRONCO II has the most powerful V-6 engine and more horsepower and torque than Chevy S-10 Blazer.

Bronco II has a tighter turning radius than the S-10 Blazer or Jeep CJ's.

Twin-Traction Beam suspension for controlled riding.

Removable rear windows and sun roof options!

AT FORD, QUALITY IS JOB #1!

## BRONCO II

IT'S A BRAND NEW KICK.



Get it together - Buckle up

### Winter Coat Sale

40% Off on All Styles

Second Edition  
Resale Shop  
7947 Page  
(at Hanley)

All proceeds benefit Life Skills Foundation for the Retarded

Afraid you're **PREGNANT?**

**WILL IT BE A PROBLEM?**

FREE confidential testing and assistance.

Greater St. Louis area 962-5300  
Ballwin Branch 227-2266  
Cave Springs Branch 447-9300  
Hampton Village 962-3653

**BIRTHRIGHT COUNSELING**

NOW 3 LOCATIONS TO SERVE YOU!

HORIZONS

for HAIR

SHAMPOO STYLE CUT & BLOW DRY \$8

Women's Finishing Style

May Be Slightly Higher

7189 MANCHESTER ROAD WASH U CAMPUS 7711 CLAYTON RD  
645-1145 889-5526 727-8143

OPEN MON. THRU SAT.

# Rent this Space

For Rates, Call Yates  
**553-5175**



# Basketball

from page 10

Dec. 9, primarily because of UMSL foul trouble. The Rivermen, who shot 43 percent from the field, sent Ozark to the line 23 times in the contest. Ozark was 17-23 from the stripe.

Bob McCormack was the games' leading scorer with 26 points. Ted Meier was the only other Riverman in the double-figures with 10 points.

Tony Joyner (24 points) and Keith Johnson (16 points) led the Ozark team in scoring.

## UMSL 75,

**Arkansas Tech University 55**  
The Rivermen outscored Arkansas Tech (1-5) 44-21 in the second half en route to their 20-point victory, Dec. 10. UMSL had trailed Arkansas 34-31 after the first half as the Rivermen hit only 48 percent from the floor, compared to a hot 83 percent by Arkansas.

UMSL, however, controlled the boards grabbing 37 rebounds. Arkansas managed just 20 rebounds.

UMSL's Ted Meier (19 points) and Arkansas' Terry Lassiter (19 points) shared scoring honors. Meier and Ron Porter (12 points) each had eight rebounds for the Rivermen.

## U. of Mississippi 73, UMSL 56

Ole Miss (4-3) needed only the first half to undo the Rivermen, outscoring the red-and-gold 40-38, Dec. 21.

UMSL shot only 40.9 percent from the floor as Ole Miss connected on 54.5 percent.

Carlos Smith led the Rivermen with 16 points, and George Buckner was the game's leading scorer with 19 points for Mississippi. Brad Perry (11 points) and McCormack (10 points) reached double-figures for the Rivermen.

Ole Miss provided UMSL's third loss to a Division 1 school.

## UMSL 107, Lindenwood College 50

Kurt Jacob (16 points) and Clarence Ward (13 points) helped the Rivermen dominate Lindenwood Jan. 5. The game marked

the first time the Rivermen have scored 100 points since 1977.

UMSL shot 60 percent from the field, and 58 percent from the free-throw line in the contest. Lindenwood (3-8), hit on just 39 percent from the floor.

Ward (13 points) and McCormack (12 points) were next in line for UMSL.

## SEMO 67, UMSL 62

Southeast Missouri State University, picked early in the year to win the MIAA, snuck by UMSL after connecting on 15 of 27 free-throw attempts. It was the Rivermen's first conference game.

Jewell Crawford (16 points) was 4-6 from the stripe, and Anthony Venson (15 points) hit 5 of 6.

Carlos Smith was the games' high scorer with 17 points, and Victor Jordan threw in 13 for the Rivermen.

UMSL shot only 44 percent from the field and 44 percent from the line, compared to SEMO's 55 percent.

## Central Missouri State U. 77, UMSL 63

CMSU made use of a 10-point edge (48-38) in the second half to hand the Rivermen their second consecutive loss in the MIAA.

Trailing by just four points after the first half, UMSL watched CMSU explode for 12 points from the free-throw line. CMSU's Ron Nunnally converted 7-8 free throws, and was the game's high scorer with 25 points.

Carlos Smith led the Rivermen with 18 points, followed by Bob McCormack with 12, and Ron Porter with 10.

CMSU outrebounded UMSL 39-30.

## UMSL 61, Rockhurst College 60

UMSL outscored Rockhurst 9-8 in the overtime period after Carlos Smith knocked the ball away from a Rockhurst forward.

After UMSL missed the front end on a one-and-one, Rockhurst controlled the rebound with seven seconds remaining, but Smith's heroics preserved the victory for the Rivermen.

UMSL used nine unanswered

points in the second half to tie the score.

Rockhurst's Mike Teahan led all scorers with 17 points. Smith and Bob McCormack shared honors for UMSL with 13 apiece.

**Rivermen notes:** UMSL picked up conference action yesterday against the University of Missouri-Rolla. Saturday, UMSL travels to Washington University for a 7:30 p.m. contest, and then on to Lincoln University Wednesday for a 7:30 p.m. match-up. Games will be broadcast on WGNU radio (920 AM) at 7:20 p.m.

# Hockey

from page 11

support of any of the league's teams, they have 25 men on their roster and dress 20 for each game.

SLU will be out to avenge its loss of last year, and it is capable of knocking off any of the teams. SLU has a balanced attack with three lines that can score at any time.

The other favorite is Logan who can score, and score in a

hurry with the league's leading scorer, center Alex Jeans.

However, if you stop Jeans you can stop Logan, and earlier this season UMSL did just that; UMSL held Jeans scoreless and thus were able to win the game.

So in order for the UMSL icemen to win their second consecutive league crown, they are going to have to beat more than one good team.

# Riverwomen

from page 10


UMSL was careless turning the ball over 27 times.

Combined with the loss to SEMO earlier in the week, the CMSU defeat Jan. 14 was the second loss suffered by the Riverwomen in MIAA play.

**RIVERWOMEN NOTES:** Lar-

son looks to avenge the losses to CMSU and SEMO, saying "they'll see how much better they are when they play here at UMSL."

The Riverwomen played Northwest Missouri State University yesterday at home, and will travel to McKendree College Monday and take on MIAA opponent Lincoln University Wednesday at Lincoln.



**The Current is lookin' to rustle up some sports writers.**

**For information, call 553-5174**

**JERRY ROBNAK'S AUTO BODY**

16 YEARS EXPERIENCE, REASONABLE PRICES

Free Estimates

SPECIALIZING IN PAINTING & FENDER STRAIGHTENING — RUST REPAIR

Bring in your INSURANCE REPAIR ESTIMATE, FOR WE PAY MOST \$50 OR \$100 DEDUCTIBLES. We will work with you on dents and damage, to make it look like new.

COMPLETE TOWING SERVICE FREE TOWING IF WE DO WORK

**COUPON**  
**10% OFF ALL LABOR**  
**429-7999**

Mon.-Fri. 8-5:30, Sat. 9-12  
8974 St. Charles Rock Road

**Printing**

**Tony's Imprint**

LETTER HEADS • BUSINESS CARDS • ENVELOPES  
WEDDING INVITATIONS • STATIONARY • RESUMES  
CARBON LESS FORMS • RUBBER STAMPS • MENUS

7978 FLORISSANT RD.  
ST. LOUIS, MO. 63121
314-524-8995  
TONY MERCURIO

10% DISCOUNT TO ALL UMSL STUDENTS AND STAFF WITH YOUR ID

**— NOW OPEN —**

**Family Planning, Inc.**  
4024 Woodson Road  
(In the Woodson Hills Shopping Center)

About 10 minutes from UMSL

**Services—By Fully Credentialed Staff—Include:**

- BIRTH CONTROL SERVICES (Information and Methods Provided)
- PREGNANCY TEST ● VD SCREENING
- TREATMENT OF MINOR GYN PROBLEMS

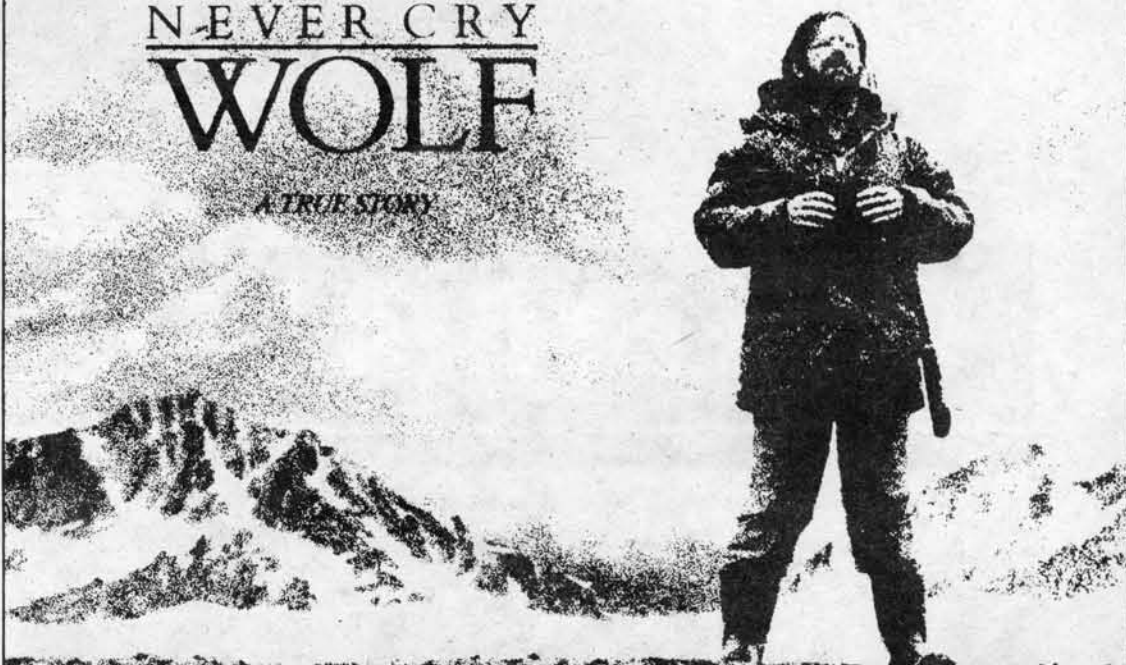
**FOR APPOINTMENT, CALL 427-4331**

**“...TRIUMPHANT FILM MAKING...”**  
— Sheila Benson, LOS ANGELES TIMES

“As ‘The Black Stallion,’ his first feature, showed, Carroll Ballard is a filmmaker of ravishing talent. There are sequences in this movie that make your jaw drop open out of genuine amazement.” — David Ansen, NEWSWEEK

“...a scary, exhilarating movie...I found it utterly fascinating...”  
— Rex Reed, NEW YORK POST

“A unique chiller-thriller — the most absorbing and satisfying survival movie — and appealing hero — in years.”  
— Judith Crist, WOR-TV



**NEVER CRY WOLF**

A TRUE STORY

WALT DISNEY PICTURES PRESENTS A CARROLL BALLARD FILM  
“NEVER CRY WOLF” STARRING CHARLES MARTIN SMITH, BRIAN DENNEHY  
CURTIS HANSON PRODUCED BY SAM HAMM, RICHARD KLETTER, C. M. SMITH, EUGENE CORR, CHRISTINA LUESCHER  
ASSOCIATE PRODUCER WALKER STUART DIRECTOR OF PHOTOGRAPHY LEWIS ALLEN, JACK COUFFER COSTUME DESIGNER JOSEPH STRICK  
Story Record Available on Disney Land Records. Read the Bantam Book. Lenses and Panaflex Camera by Panavision. PG PARENTAL GUIDANCE SUGGESTED  
DOLBY STEREO Technicolor. Released by Buena Vista Distribution Co., Inc. © 1981 Walt Disney Productions. SOME MATERIAL MAY NOT BE SUITABLE FOR CHILDREN.

**STARTS FRIDAY**

**HALLS FERRY 8**  
1-20 & NEW HALLS FERRY  
355-2711

**RONNIE'S 8 CINE**  
LINDB. & BAPTIST CH. RD.  
843-5335

**SHADY OAK THEATRE**  
FORSYTH AT HANLEY  
727-2319

**WESTPORT CINE**  
1-270 & PAGE  
878-8660