

Land-Grant University Designed to Serve

Presented April 1, 2004, to the
University of Missouri Board of Curators



University of Missouri-St. Louis
Exceptional ♦ Metropolitan ♦ Education

Land-Grant University Designed to Serve

In the end, the clear evidence is that, with the resources and superbly qualified professors and staff on our campuses, we can organize our institutions to serve both local and national needs in a more coherent and effective ...

Kellogg Commission on the Future of State and Land-Grant Universities
(February 1999)

Land-Grant University Designed to Serve

UMSL is Designed to Serve

Enriches students experiences by including engagement into the curriculum and offering them practical off-campus opporunities.

Puts its critical resources to work on the problems the communities it serves face.

Land-Grant University Designed to Serve

Des Lee Collaborative Vision

– Wendell Smith

Department of Social Work

– Lois Pierce

Public Policy Research Center

– Mark Tranel

Children's Advocacy Services of St. Louis

– Jeffrey Wherry

Land-Grant University Designed to Serve



University of Missouri-St. Louis
Exceptional ♦ Metropolitan ♦ Education

Des Lee Collaborative Vision

Vision of philanthropist E. Desmond Lee

Improve the lives of the region's young people
by connecting cultural institutions to UMSL
through several joint professors.

Original Partners

Missouri Botanical Garden ♦ Missouri Historical Society ♦ Opera Theatre of Saint Louis ♦ St. Louis Art Museum ♦ St. Louis Science Center ♦ Saint Louis Symphony ♦ Saint Louis Zoo



Expanding the Des Lee Collaborative Vision

35 professorships.

100 community &
educational institutions.

500,000 students & adults
touched by programs.



Des Lee Collaborative Vision

Citizenship Education

Kids Voting Missouri.

UMSL led program in which K-12 students study a special curriculum and go to official polling places on Election Day to cast ballots. It teaches students to be involved, informed citizens.

Des Lee Collaborative Vision

Citizenship Education

Kids Voting Missouri.

Started in 1996 with four school districts.

300,000 students from 25 districts will participate
this year through.

Des Lee Collaborative Vision

Science Education

Five endowed professors.

Partners include St. Louis Science Center, Missouri Botanical Garden & St. Louis Zoo.

Provide science education outreach programs to young people at partners' sites and more than 50 schools in Missouri & Iowa.

Des Lee Collaborative Vision

Science Education

James Shymansky received a NSF grant to improve science education programs in elementary schools.

Patricia Simmons received federal Gear Up to improve science literacy among students, adults in St. Louis.

Patricia Parker received a NSF grant to improve science programs at five St. Louis area school districts.

Des Lee Collaborative Vision

Art Education

Four professors.

Partners include St. Louis Art Museum,
Contemporary Art Museum & Washington U.

Create art education outreach programs for schools
& local institutions.

Des Lee Collaborative Vision

Art Education

E. Louis Lankford.

Named 'Educator of the Year'

by Missouri Higher Education Art Association.

Des Lee Collaborative Vision

Music Education

Douglas Turpin.

Partners include St. Louis Symphony & Opera
Theatre of St. Louis.

Supplements music education in St. Louis-area
schools through visits by UMSL faculty &
professional performers.

Des Lee Collaborative Vision

Music Education

99 elementary & secondary schools in 12 school districts participate.

Annual year-end concert at Touhill Center involving more than 600 students.



Des Lee Collaborative Vision

Character Education

Marvin Berkowitz.

Partners include Cooperating Schools Districts of
St. Louis.

Provides free training to school districts and
individual schools in character education
methods, theories and research.

Des Lee Collaborative Vision

Character Education

Annually visits 150 St. Louis-area schools.
Conducts Summer Institute in Character Education
for school board members & administrators.
Writes a nationally syndicated column on character
education.

Land-Grant University Designed to Serve



University of Missouri-St. Louis
Exceptional ♦ Metropolitan ♦ Education

Department of Social Work

Community Service is Intrinsic

Practicum experience of students.

Training for social service agency staff.

Applied research & service of faculty.



Department of Social Work

Student Service & Learning

400 approved agency sites.

80 undergraduate & graduate students involved
each semester.

Each student provides 600 to 800 hours of service.



Department of Social Work

Student Service & Learning

150,000 hours of service annually.

Faculty provide about 160 consulting visits annually to St. Louis-area agencies.



Department of Social Work

Missouri Department of Social Services

State's public child welfare agency.

Agency provides health, safety and independence services to children & families.

Students participate in family assessment, family-centered out-of-home services, foster care & adoption.



Department of Social Work

Life Crisis Services

Private non-profit organization.

Provides quality suicide and crisis telephone intervention to 220 callers daily.

Also provides Spanish hotline, gambler's hotline & hard of hearing/deaf hotline.



Department of Social Work

Redevelopment Opportunities for Women

Non-profit agency.

Provides economic self-sufficiency and family development services.

Also provides domestic violence education, positive parenting training and personal skills development.



Department of Social Work

Collaborative Field Education Project

UM System demonstration.

Collaboration among UMSL, WU & SLU.

Training of 180 field instructors annually.

Continuing education projects for 250 people.

Continuing education credits fulfill licensure
renewal requirements.



Department of Social Work

Faculty-Community Relationships

Faculty serve on numerous agency boards.

Faculty provide pro bono consultation to state & local governments & organizations.

Faculty conduct research and program development for state & local governments.



Department of Social Work

Economic Assessment of Service

The combined efforts of social work students and faculty results in more than **\$1.5 million** in in-kind service annually to the community.



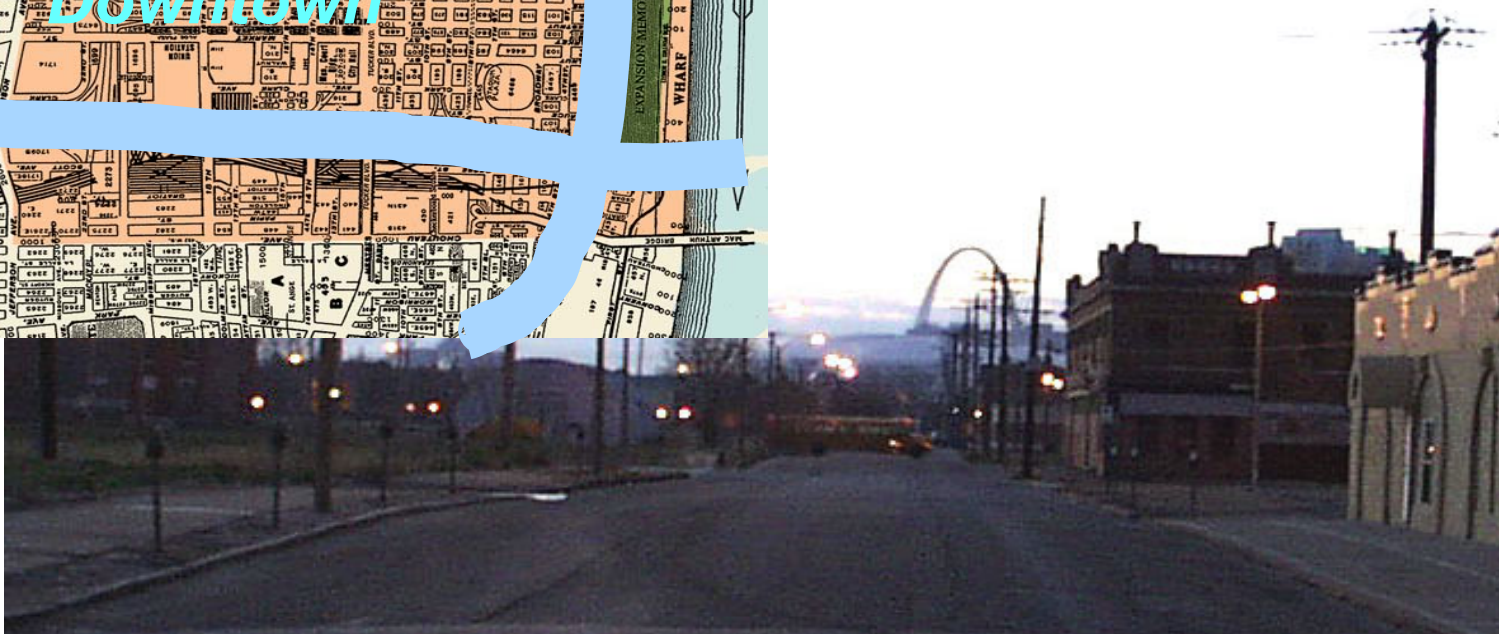
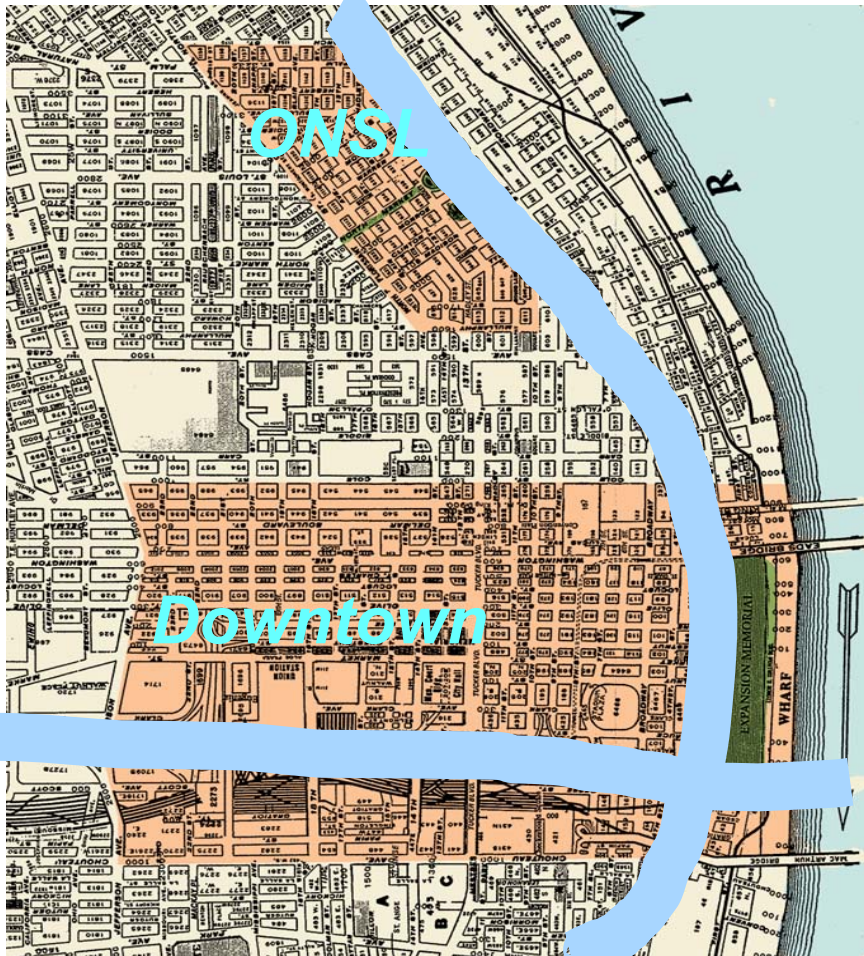
Land-Grant University Designed to Serve



University of Missouri-St. Louis
Exceptional ♦ Metropolitan ♦ Education



Public Policy Research Center
University of Missouri – St. Louis



Old North Neighborhood Partnership

Neighborhood Stabilization and Historic
Preservation: Recreating a Sense of Place

***History, Archaeology, Museum Studies,
Communications, Photography***

- *Bicycle Tour, Links to Riverfront Trail*
- *Oral Histories, Documentary*
- *Community Museum Space*
- *Archaeological Digs*





Old North Neighborhood Partnership

Environmental Health and Safety: Improving Living
Environments for Families and Children

Barnes College of Nursing & Health Studies

- *Neighborhood Health Assessment*
- *Development of Educational and Intervention Strategies*



Old North Neighborhood Partnership

Home Maintenance and Financial Literacy: Assisting
Limited Resource Families

University Outreach and Extension and Sociology

Home Maintenance Programs

Gateway to Financial Fitness



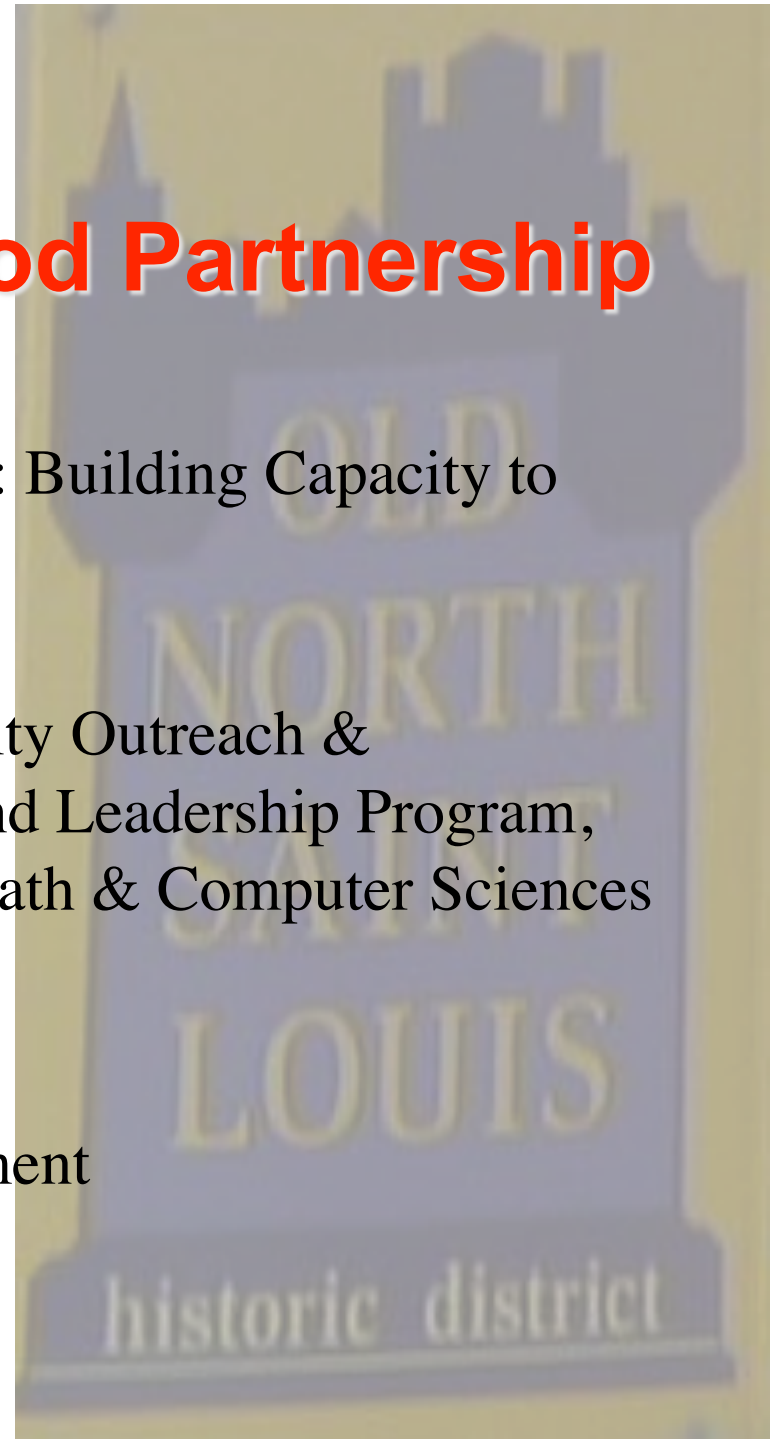


Old North Neighborhood Partnership

Community Organizing and Leadership: Building Capacity to
Bring About Change

Public Policy Research Center, University Outreach &
Extension, Nonprofit Management and Leadership Program,
Political Science, Honors College, Math & Computer Sciences

Neighborhood Leadership Academy
Organizational and Board Development
Web Page Development





A group of approximately 15 people, including men, women, and children, are posing for a photo in front of a two-story brick building. The building features arched doorways and white-framed windows. The group is arranged in two rows, with some people standing and others kneeling or sitting in the front. The scene is outdoors, with a sidewalk and a small patch of grass visible in the foreground. The overall tone of the image is positive and community-oriented.

Old North Neighborhood Partnership Impacts

Increased visibility, marketing, investment in the neighborhood

Leveraging of over \$125,000 in forgivable loans for home rehabilitation

Increase in organization and board membership, diversity and effectiveness

Development of key institutional partnerships

Old North Neighborhood Partnership

The background image shows a multi-story brick building with a person standing on a red ladder near an arched doorway. In the foreground, several people are standing on a sidewalk, and yellow caution tape is strung across the area. The scene appears to be a community project or renovation work.

LIVABLE communities don't
just **HAPPEN**.

They are **CREATED** by the
PEOPLE who **LIVE** in them.

Land-Grant University Designed to Serve



University of Missouri-St. Louis

Exceptional ♦ Metropolitan ♦ Education

Children's Advocacy Services of Greater St. Louis

Jeffrey N. Wherry, Ph.D., ABPP



Extent of the Issue

Women: 1 in 4 women have been sexually abused in some form by age 18.

Men: 1 in 6 men have been sexually abused in some form by age 18.

(Finklehor, 1990)



Effects of Sexual Abuse

Teenage homelessness

Teenage pregnancy

Runaways

Sexual acting out

Substance abuse

Abuse of own children

PTSD (war trauma)

School Problems

High risks linked to HIV/AIDS

Depression/suicide

Aggression



Purpose of CASGSL

Coordinate efforts between agencies representing:

- Law enforcement
- Judicial system
- Medical/nursing
- Victim services
- Mental Health
- Social Services



Goals

Investigation of child sexual abuse in a child friendly environment

Counseling/therapy

Education, community training, & outreach

Practical, scholarly research

Partners in prevention



Activities Related to Goals

Investigation in a child-friendly environment

Investigation

- Referrals for investigative interviews come from the DFS Hotline or from law enforcement
- After a cursory interview, a thorough, coordinated interview is scheduled
- Team members participate in the process--in a child friendly environment
- Feedback is provided to parent(s) and child
- Follow-up begins immediately

Medical/Nursing

- Physical exams are scheduled when appropriate
- Exams are done by experienced health care professionals

Activities Related to Goals

Counseling/therapy

- Support group for non-offending parents
- Individual therapy (children/adolescents)
- Group therapy (youth and parents)

Family therapy

Psychological evaluations

Psychiatric care

Consultation

Follow-up & after care



Activities Related to Goals

Practical, scholarly research (which is clinically oriented and related to topics like):

- Symptoms
- Outcomes
- Effectiveness of treatment
- Long-term follow-up



Activities Related to Goals

Education, community training, & outreach

Community education (e.g., faith community, teachers, parents, day care)

Classroom lectures and seminars

Teaching courses

Internships

- Counseling
- Psychology
- Art therapy
- Social Work
- Psychiatry



Partners in Prevention

Reducing the incidence of child sexual abuse
through public education and parental support:

- Prevention activities
- Community seminars
- Partnerships with other agencies



Progress

Working with the multidisciplinary team to effect change in the method of investigation

500+children served last year

1300/200/13 trained last year

Workshops, classroom, seminars, national & regional presentations

Symposium

Interns in social work, psychology, & counseling from UMSL, SLU, WU, Lindenwood, Webster

Practical research initiated



Related Service Projects

Internet Crimes Against Children Task Force

Follow-up Program Initiated—Longitudinal Study

Outreach to the Community

National Child Traumatic Stress Network



Land-Grant University Designed to Serve



University of Missouri-St. Louis
Exceptional ♦ Metropolitan ♦ Education