



The State of the University

University of Missouri-St. Louis

September 8, 2005



UMSL & Express Scripts to align

Express Scripts to locate HQ on UMSL campus

Second largest company in Missouri

Pathfinder for economic development

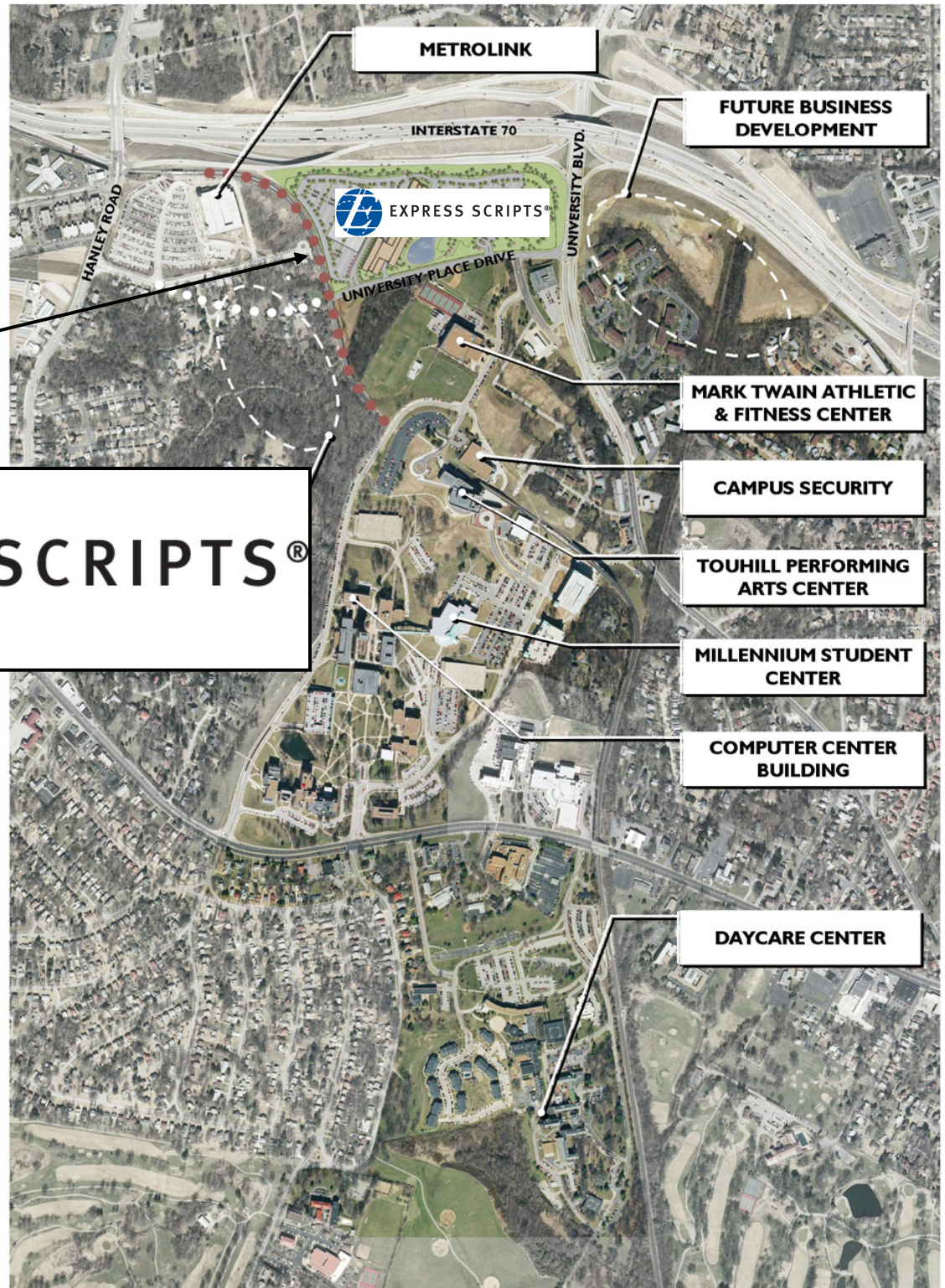
Collaboration will offer significant synergies and opportunities

Jump-starts Business, Technology & Research Park

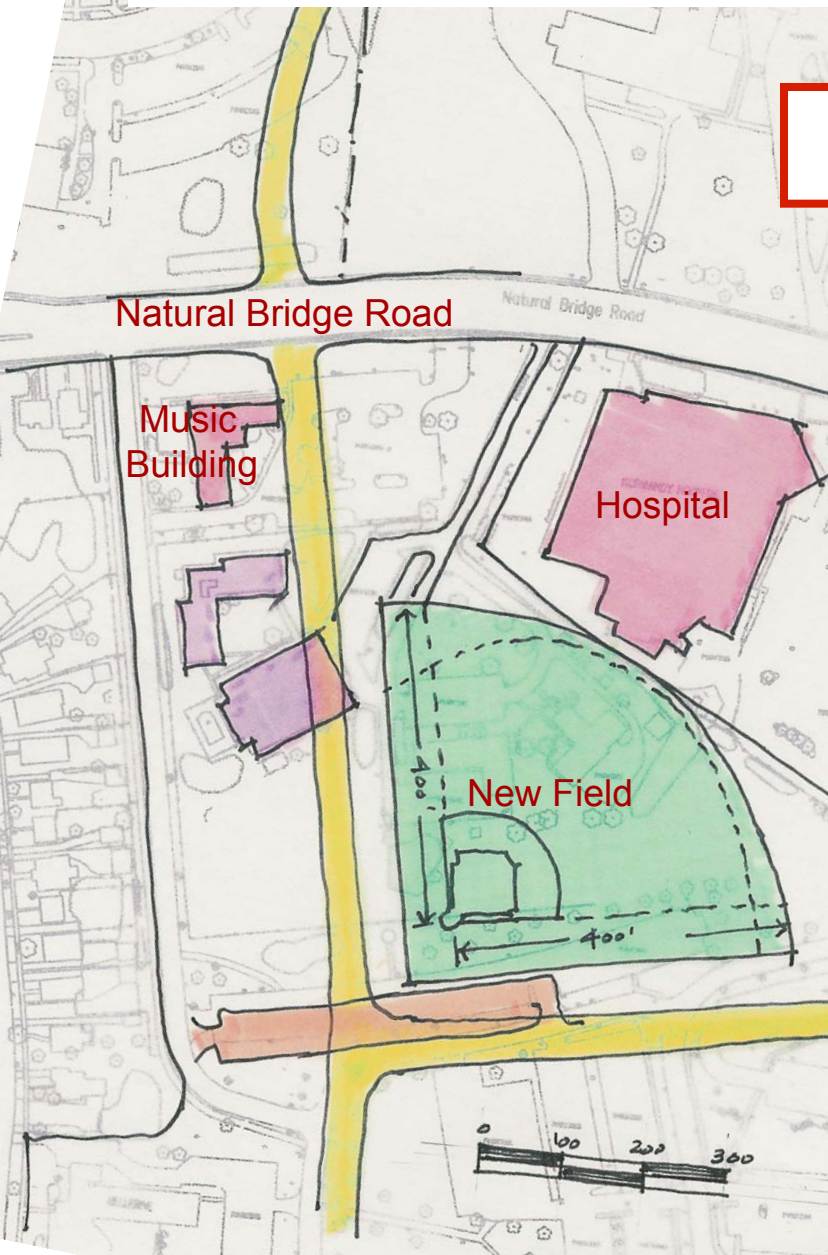




EXPRESS SCRIPTS®

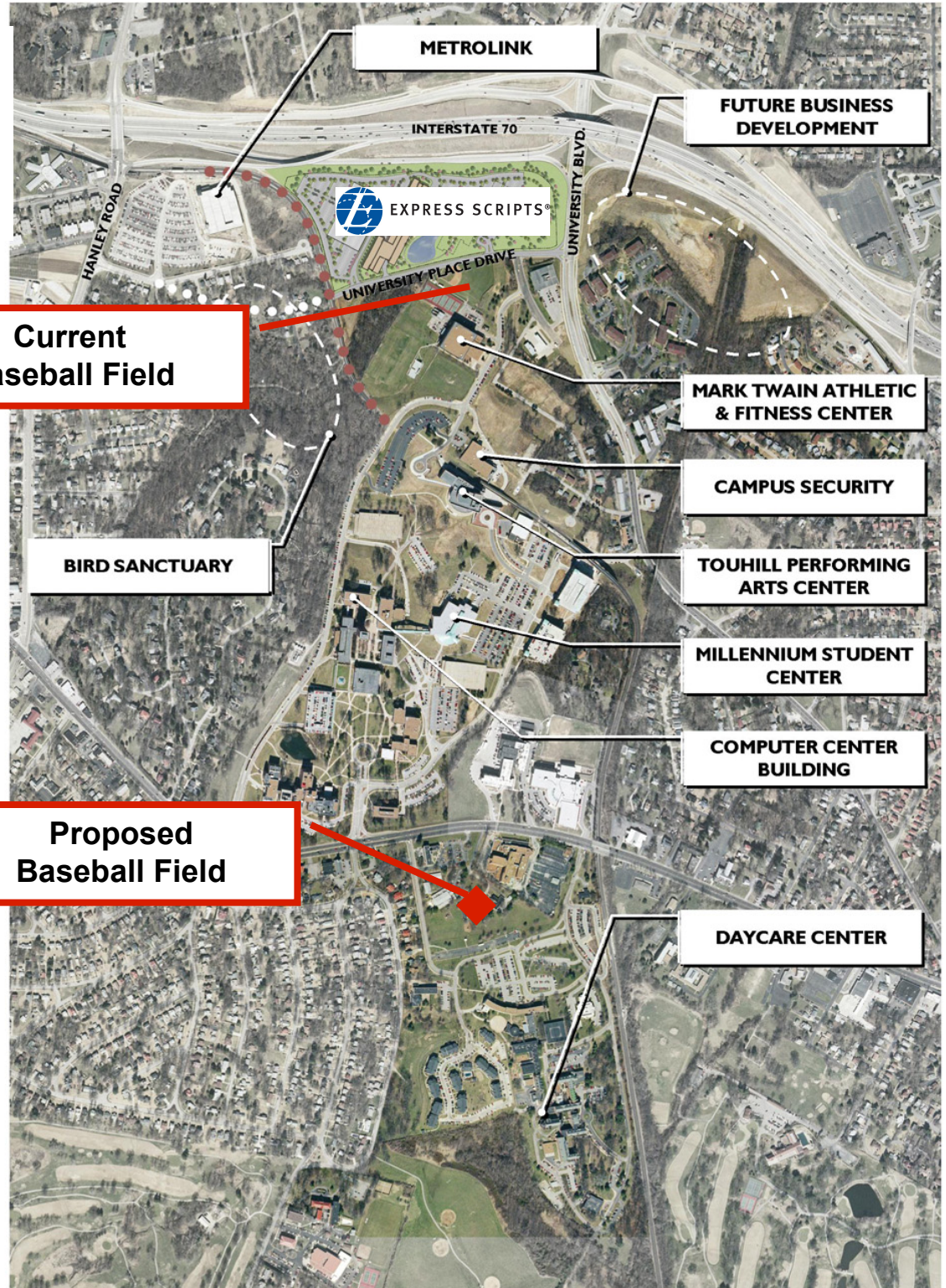


Proposed Baseball Field



**Current
Baseball Field**

**Proposed
Baseball Field**



Alignment of values and mission

Five-way partnership: ESI, State, St. Louis
County, NorthPark, University of
Missouri

Key component of the UMSL Action Plan
and Master Plan

Affordability, public benefit, research-
driven, knowledge-management, people



Building the UMSL-ESI collaboration

Students

Increased internships and job opportunities

Faculty

Potential research partnerships, including
information technology, health-care
economics and public policy

Surrounding Communities

Enhanced economic activity and general
increase in tax revenues



Expanded access through academic partnerships

Deliver collaborative master's degree program at
Harris-Stowe State University

Develop campus in west St. Louis County with
St. Louis Community College



Academic recognition

U.S. News & World Report rankings

Criminology & Criminal Justice ranked 4th

International Business ranked 16th

Overall, UMSL received its best ranking



Research & external funding

External Funding

\$25 million in FY05 represents 6% increase

New \$28 million grant – \$32 million match

Six-year grant received by College of Education and
St. Louis Community College

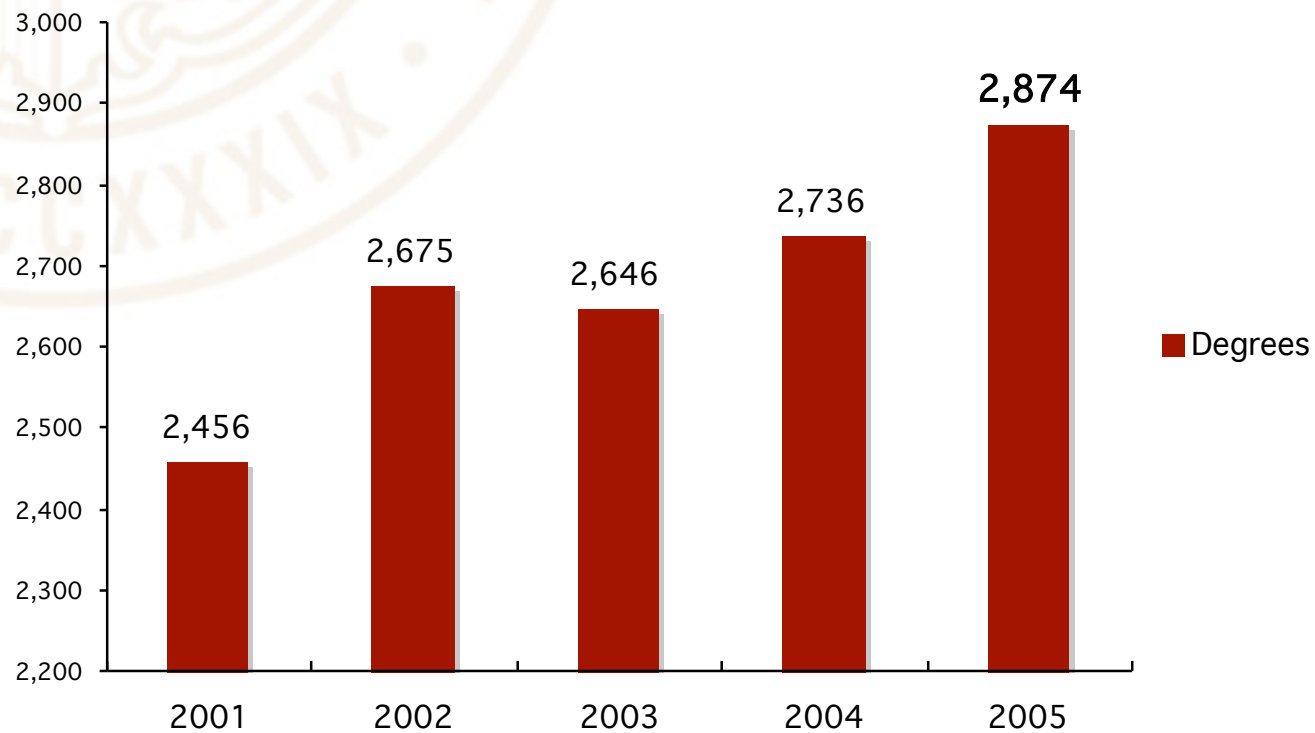
Initiative to enhance local high school graduation and
college attendance rates

Largest in campus history, Patricia Simmons, lead PI



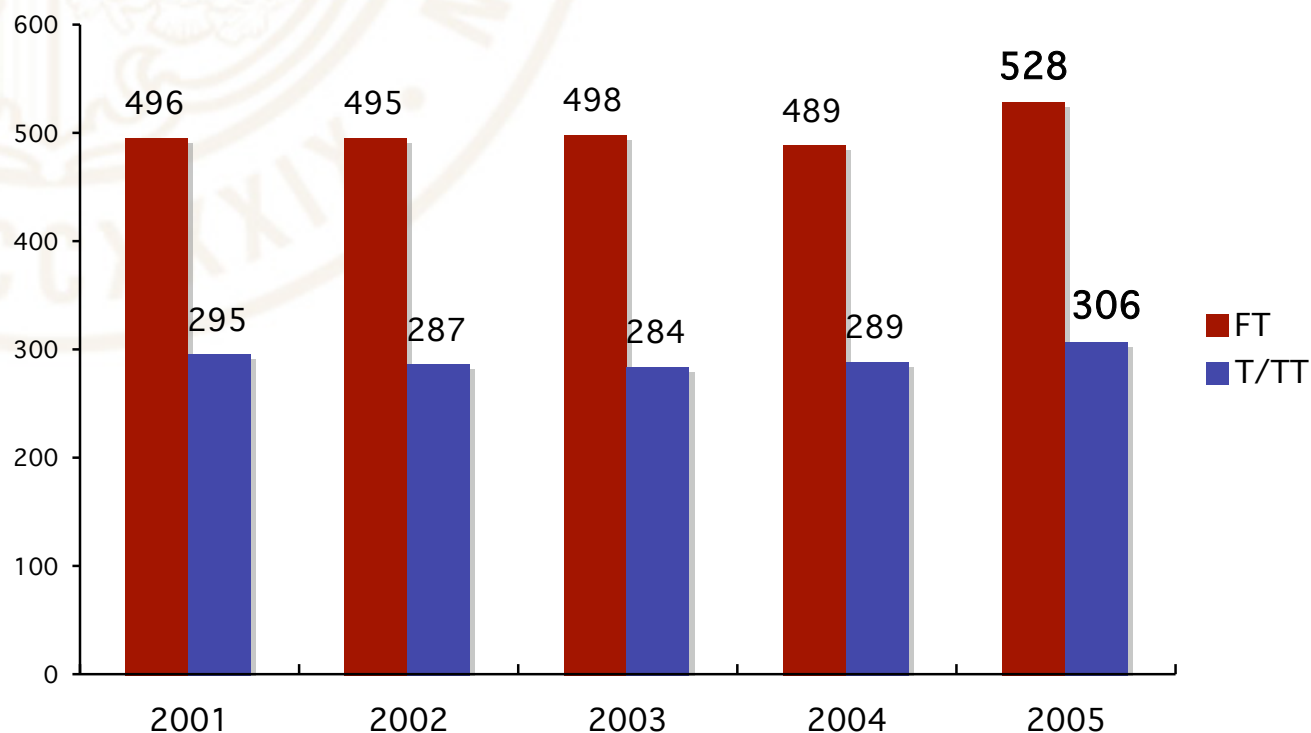
Record number of degrees

51 doctoral degrees
862 master's degrees



Building the faculty

17 tenure track hires
39 full-time hires



Student leadership

Maria Curtis

Student Representative to Board of Curators

Senior majoring in English

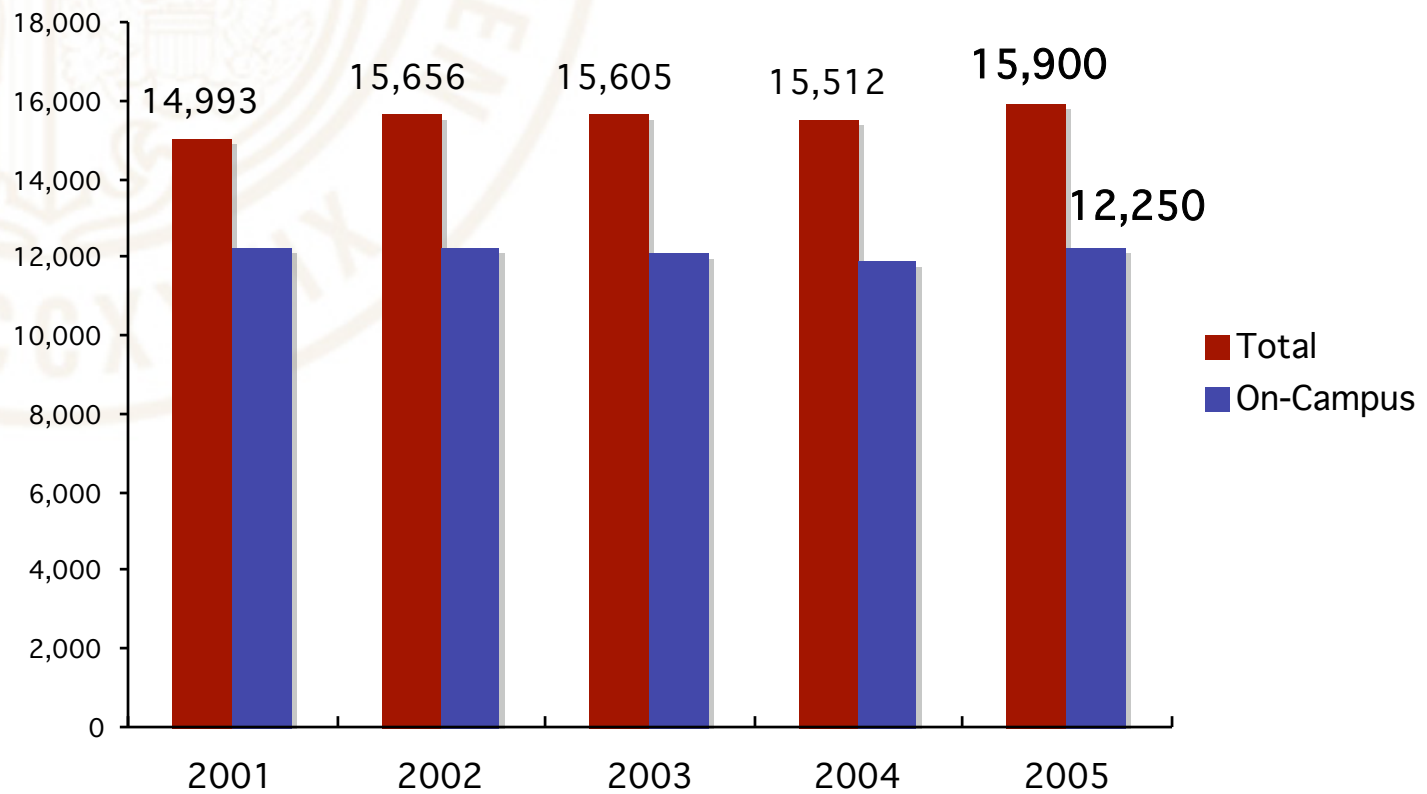
D'Andre Braddix

President of Student Government Association

Junior majoring in criminology and criminal justice



3% increase in on-campus enrollment



Note: 2005 enrollment becomes official Oct. 1.



Increased scholarships

More than \$3.2 million in new scholarships

\$1.5 million in institutional funding

\$1.7 million in endowed scholarships (57 scholarships)

Increase in freshmen yield rate – 49% from 38%

571 freshmen – 21.7% increase

2,073 transfers – 11% increase



Apartments and residence halls at capacity

More than 1,000 students living on campus

New residence hall to open August 2006



Math Technology Learning Center

Opened in August in the J.C. Penney Building

Seeking student success through tutoring, testing
and mentoring

One hundred computer workstations



Administrative re-structuring

Evening College

Task Force recommended evening courses
become responsibility of home units

Athletics

Task Force recommended moving athletics
department to Student Affairs



Task force on sustainability

Towards a more environmentally friendly campus

Recycling

Replaced traditional trucks with electric-powered vehicles

Energy efficient building designs

Promote use of mass transit

Bike paths throughout campus and surrounding communities



UMSL responds to Hurricane Katrina

Waives tuition and fees for displaced students

71 students enrolled as of today

Special thanks for efforts and rapid response
of faculty, staff and provost





The State of the University

University of Missouri-St. Louis

September 8, 2005

