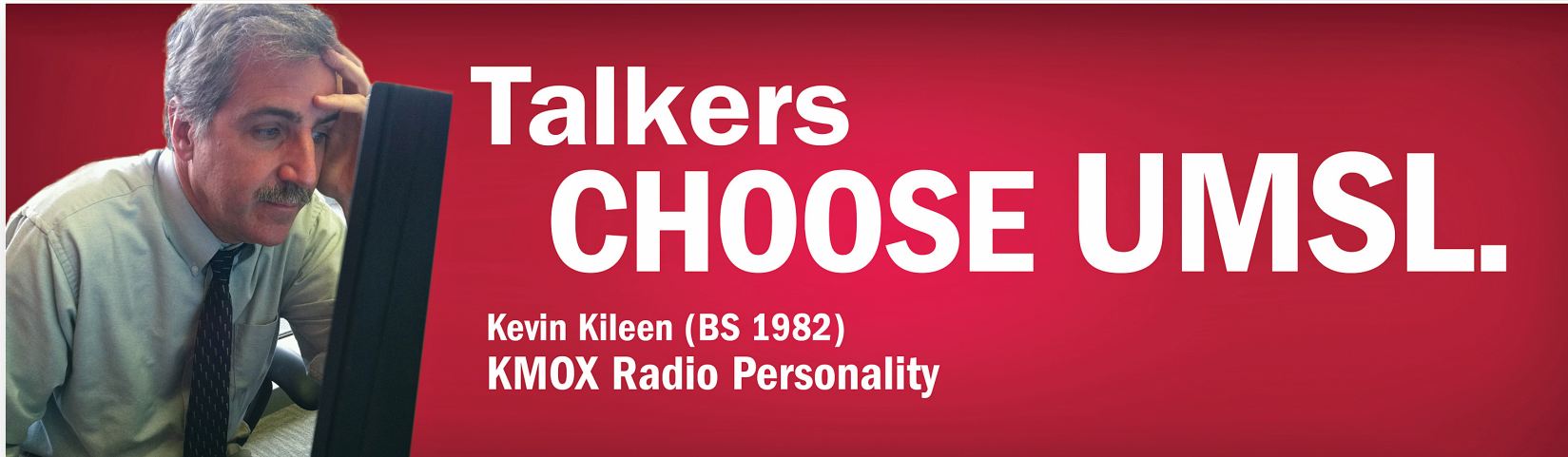




2015 Chancellor's Report to the Community

1.1 million drivers see UMSL billboards daily

A billboard with a red background. On the left, a man with a mustache, wearing a light blue shirt and a dark tie, is looking at a computer monitor. The text on the right reads "Talkers CHOOSE UMSL." in large white letters. Below this, it says "Kevin Kileen (BS 1982) KMOX Radio Personality" in white.

**Talkers  
CHOOSE UMSL.**

Kevin Kileen (BS 1982)  
KMOX Radio Personality

A billboard with a red background. On the right, a man with dark hair, wearing a suit and tie, is smiling. The text on the left reads "Leaders CHOOSE UMSL." in large white letters. Below this, it says "Steve Stenger (BSBA 1993) St. Louis County Executive" in white. At the bottom left, in small white text, it says "Serious education. Serious value.™".

**Leaders  
CHOOSE UMSL.**

Steve Stenger (BSBA 1993)  
St. Louis County Executive

Serious education. Serious value.™

A billboard with a red background. On the left, two men are shown. One is wearing a grey hoodie and glasses, holding a donut. The other is wearing a blue t-shirt with "STRANGE DONUTS" on it. The text on the right reads "Entrepreneurs CHOOSE UMSL." in large white letters. Below this, it says "Jason Bockman (BS 2007) & Corey Smale (BA 2008) Co-owners, Strange Donuts" in white. At the bottom right, in small white text, it says "Serious education. Serious value.™".

**Entrepreneurs  
CHOOSE UMSL.**

Jason Bockman (BS 2007) & Corey Smale (BA 2008)  
Co-owners, Strange Donuts

Serious education. Serious value.™

A billboard with a red background. On the right, a woman with long blonde hair is smiling. The text on the left reads "Performers CHOOSE UMSL." in large white letters. Below this, it says "Erin Baskett (BSBA 2003) CFO/CCO Autonomous Research US, New York" in white.

**Performers  
CHOOSE UMSL.**

Erin Baskett (BSBA 2003)  
CFO/CCO  
Autonomous Research US, New York

A billboard with a red background. On the right, a man in a white lab coat with a stethoscope around his neck is smiling. The text on the left reads "Champions CHOOSE UMSL." in large white letters. Below this, it says "Samuel Mugaya (BSN 2014) Founder, Care for Orphans & Community Development, Uganda" in white. At the bottom right, in small white text, it says "Serious education. Serious value.™".

**Champions  
CHOOSE UMSL.**

Samuel Mugaya (BSN 2014)  
Founder, Care for Orphans &  
Community Development, Uganda

Serious education. Serious value.™

recruiting more, better students



Enrollment – 17,085 – Campus Record  
Previous record was 16,809

**Fall 2014**



recruiting more, better students

## UMSL has set academic quality records for the past two falls for incoming students

- 6% increase in incoming freshmen
- Freshmen ACT average – 24.2
- Freshmen and transfers average GPAs





recruiting more, better students

25% of UMSL's freshmen class  
participated in ACP or Bridge or both ...

### Bridge Graduates

Chris Wieland from Francis Howell Central  
Khaliyah Kelly from McKinley High School



recruiting more, better students

Major investment is reaping benefits for veterans and campus alike

- Veterans Center
- Department of Military and Veteran Studies
- Named Military Friendly School



Veteran enrollment up 17%  
James Day among 429 vets at UMSL



Optometry

100%

→ PASS RATE





great art comes in many forms ...



# Cartoon Museum of London

Now appearing ... UMSL student work

Go. **Tritons.** Go.

158 – 85 – 3

win-loss record



Outstanding Students.  
**INCREDIBLE ATHLETES.**





# 2<sup>nd</sup> WOMEN'S SOFTBALL

NCAA Tournament Bound  
Softball

Men's Golf

Women's Golf

Men's Tennis

Baseball ????

Hannah Perryman

- 6 perfect games
- 2 NCAA records



102,351 Degrees

# 90,921 Degree Holders



# So, just who does produce the CEOs of America's largest companies?

Midway through last year, I looked up the undergraduate alma maters of the chief executives of the top 10 corporations in the Fortune 500. These were the schools: the University of Arkansas; the University of Texas; the University of California, Davis; the University of Nebraska; Auburn; Texas A & M; the General Motors Institute (now called Kettering University); the University of Kansas; the **University of Missouri, St. Louis**; and Dartmouth College.

Joseph Gorder

- Valero Energy

March 13, 2015

The New York Times

Op-Ed Columnist

## How to Survive the College Admissions Madness

By Frank Bruni

HERE we go again. At Harvard, Emory, Bucknell and other schools around the country, there have been thousands of applicants yearning for an elite degree. They'll get word in the next few weeks. Most

of them will be rejected. Peter Hart and Jenna Leahy, student he'd been at New Trier High School, in

Chicago suburbs, were among their peers. She was a graduate of college they called Yale — and she'd been up there. Peter was ranked in the top 10 of his class at the special undergraduate business school

at New Trier, a public school where he'd been a somewhat ordinary, at least in terms of his studies. At Indiana, though, the students in his freshman classes weren't as showily gifted as the New Trier kids had been, and his self-image went through a transformation.

"I really felt like I was a competent person," he told me last year, shortly after he'd turned 28. And he thrived. He got into an honors program for undergraduate business majors. He became vice president of the business fraternity on campus. He cobbled together the capital to start a tiny real estate enterprise that up and rented small houses to fellow students.

And he finagled a way, off campus, to interview with several of the top-drawer consulting firms that trawled for recruits at the Ivies but often bypassed schools like Indiana. Upon graduation, he took a job in the Chicago office of the Boston Consulting Group, where he recognized one of the other ne the friend from New Trier who'd gone to Yale. Traveling a more gilded path, she'd arrived at the destination.

He later decided to get a master's degree in business administration, and that's where he is now school — at Harvard.

# UMSL alumni shine

## Emerson Excellence in Teaching Award



- ◆ Dana Aubuchon, St. Ann Catholic School
- ◆ Barbara Dobbert, Clayton High School
- ◆ Jessica Karll, Discovery Ridge School
- ◆ Janet Landgraf, St. Mark's Lutheran School
- ◆ Linda Nagle, Lincoln Elementary School
- ◆ Andrew Nieters, Desmet High School
- ◆ Wendy Pecka, East Central College
- ◆ Rainah Pray, Becky-David Elementary School
- ◆ Christine Ries, Airport Elementary School
- ◆ Rhonda Spotanski, Hazelwood West Middle School
- ◆ Kathleen Saunders, South Technical High School

**Wilma Calvert, UMSL**  
Associate Professor of Nursing





Sara Foster



Jennifer Ehlen



Cheryle Dyle-Palmer



Kathy Boyd-Fenger



Sandra Marks

## Influential Business Women

*STL Business Journal*

# Curators' Professors



Mark Pope  
Counseling & Family Therapy



Susan Feigenbaum  
Economics





Mary Troy, English



# Presidential Awards

University of Missouri System

Sharon Johnson & Lois Pierce  
Social Work



Wendy Saul, Education



## Hall of Famer Performer



Jim Henry's barbershop quartet, Crossroads,  
featured on Fox and Friends

New Fellow

# American Society of Criminology



Finn-Aage Esbensen

# **2015 Group Practice Award**

National Association of Specialists in Group Work



**Angela Coker**

Founder, SisterScholars-in-Training at UMSL



Syracuse  
Boston College  
William & Mary  
Wake Forest

10<sup>TH</sup> AMONG PUBLICS

15<sup>TH</sup> NATIONALLY

**University of Missouri–St. Louis**

Academic Analytics  
high research classification

UMASS-Boston  
Baylor

Alabama

Texas Tech

CLEMSON

**Auburn**

Fordham  
Binghamton

George Mason

Kansas State



13

## UMSL DISCIPLINES IN THE TOP 50

**Academic Analytics**

high research classification

Educational Counseling

Criminology

Clinical Psychology

Psychology

Finance

Accounting

Evolutional Biology

Information Systems

Social Work

Communication

Applied Math

Educational Psychology

Philosophy



## International Business Program

Best in Missouri – again!

16<sup>th</sup> among all universities nationally  
12 consecutive years in the Top 20

**U.S. News**

& World Report

UMSL Business is the only such college in St. Louis to have accreditation for both business and accounting from the Association to Advance Collegiate Schools of Business.

An increasingly popular and important  
program ...

graduate criminology consistently  
ranks 4<sup>th</sup> nationally by *U.S. News*





# Making the *U.S. News & World Report* “Best” list

- ✓ Biology
- ✓ Chemistry
- ✓ Clinical Psychology
- ✓ Education
- ✓ Nursing
- ✓ Psychology
- ✓ Public Policy Administration
- ✓ Social Work



# UMSL online programs net exceptional ratings

**1<sup>st</sup>** among Missouri universities for master's in education – 25<sup>th</sup> nationally.

**2<sup>nd</sup>** among Missouri universities for overall bachelor's programs – 50<sup>th</sup> nationally.





# 25 Years

## Pierre LaCledé Honors College



For second year running ...

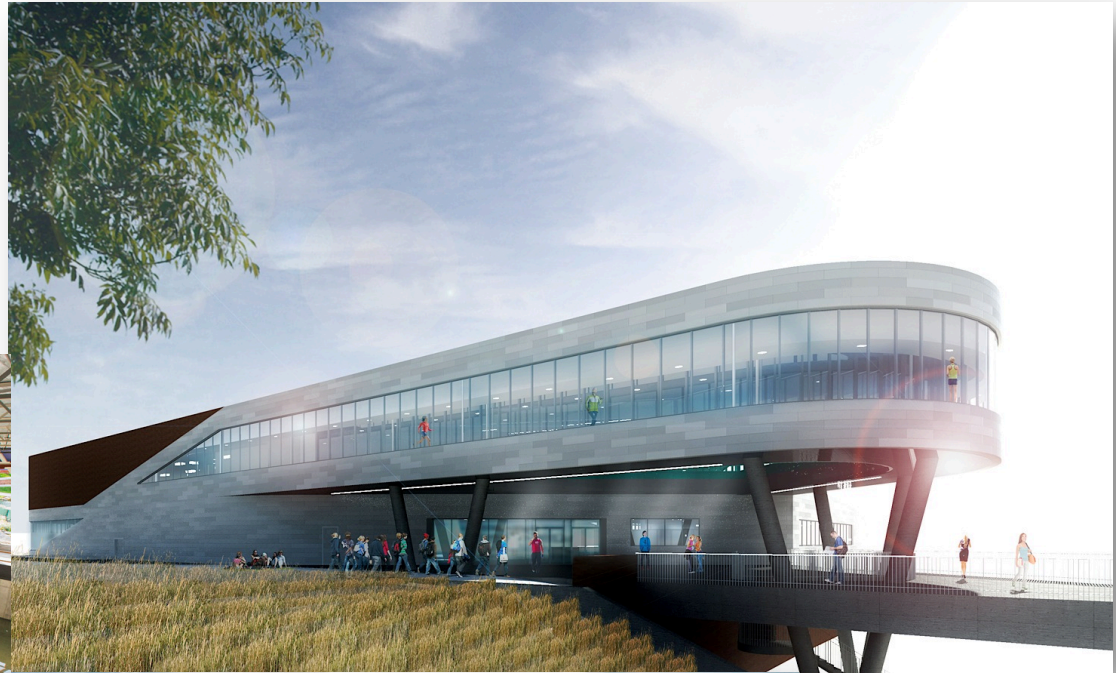
INSIGHTS into Diversity Magazine

## **UMSL Receives a Higher Education Excellence in Diversity Award**

Recognizes universities that demonstrate  
an outstanding commitment to **diversity**  
and **inclusion**.

# Recreation and Wellness Center

OPENING IN AUGUST!





# Science Learning Building



Spring 2016  
target date to open





# Optometry Patient Care Center





# Business Administration Building

50/50  
Match Project

General Assembly has appropriated \$10M

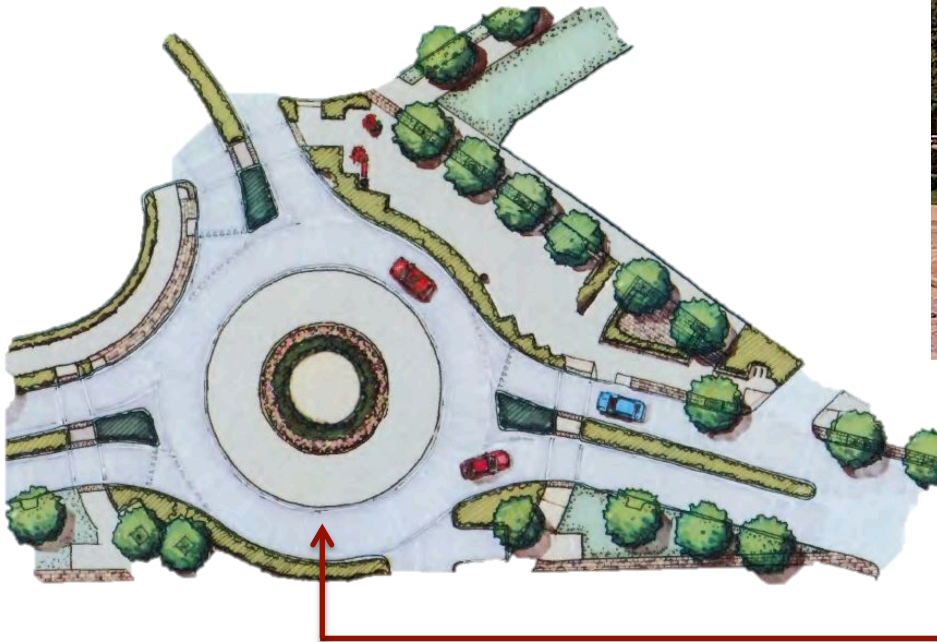


Landscaped medians

Dedicated bike lanes

## Roundabout-Community Plaza

# Natural Bridge Road as a Great Street





## 117-acre tract of land adjacent to campus

- Donor provided \$1.5M to purchase
- 10-year-lease agreement to remain course
  - Safeguard for campus, community



CHALLENGES  
Challenges  
Challenges





# UMSL responds to Ferguson



Top-up efforts have contributed to ...

- positive attitude
- reasoned responses
- safe climate

Counseling Services -  
Food Drives -  
On-campus Forums -  
NPR & PBS Broadcasts -  
Faculty Expertise -





### Business partners

- St. Louis Regional Business Council
- St. Louis Regional Chamber
- North County Inc.

## UMSL serves as nexus for change and progress ...

Hosted Gov. Jay Nixon and AG Chris Koster

- 5 press conferences
- 100-plus media outlets
- Dozens of private meetings

UMSL professor serving as one of three alumni on  
Governor's Ferguson Commission



Six Edward R. Murrow Awards  
St. Louis Public Radio 90.7 KWMU

- Two Newsroom Awards
- Four Individual Awards
  - Durrie Bouscaren & Stephanie Lecci
  - Jason Rosenbaum
  - Veronique LaCapra
  - Tim Lloyd



# Emerson Community Scholarship Program



**\$1.5M for UMSL students**

- Ferguson-Florissant, Normandy, Jennings, Hazelwood, Riverview Gardens & Ritenour school districts

## **NEW \$500,000 Investment in Students**

- University of Missouri System
- University of Missouri–St. Louis

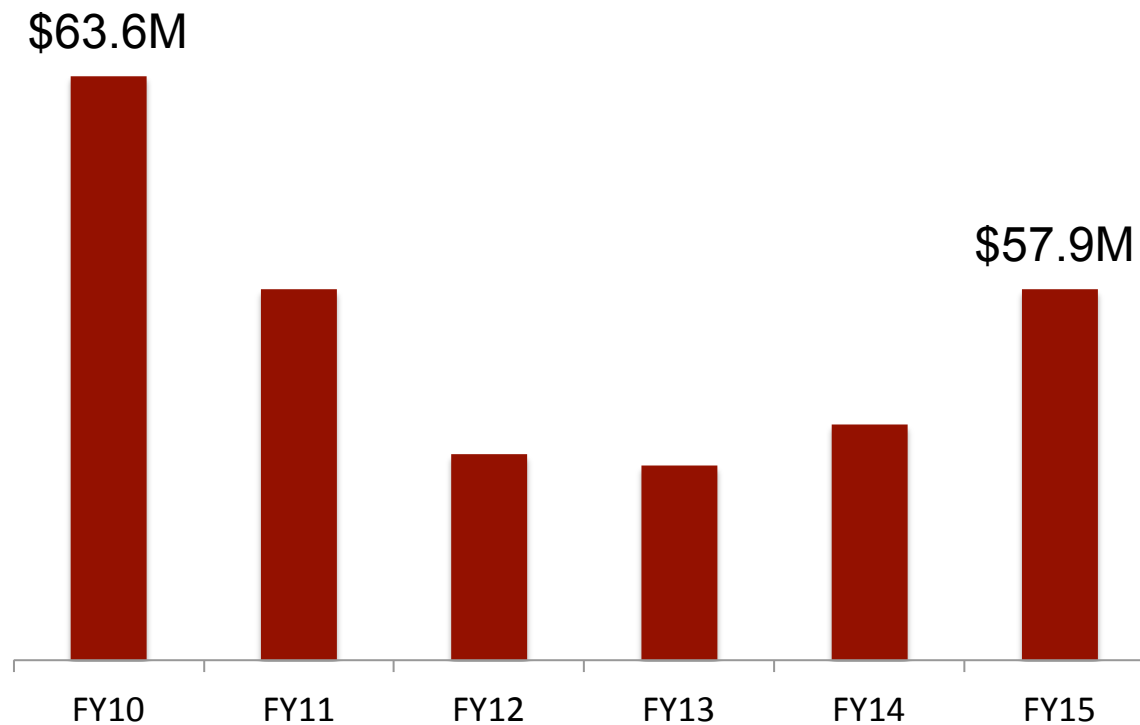
# North County Scholars Program

Creating Synergy

Emerson Community Scholarship Program

# State funding remains a challenge ...

as it has for other institutions





## Concept of State Treasurer Clint Zweifel

- Picking up political and educational support

# The Missouri Promise

- Scholarships to eliminate or greatly reduce cost of college
- Affect students with 3.0 GPA or better
- Fund through increased tobacco tax



2015 Chancellor's Report to the Community