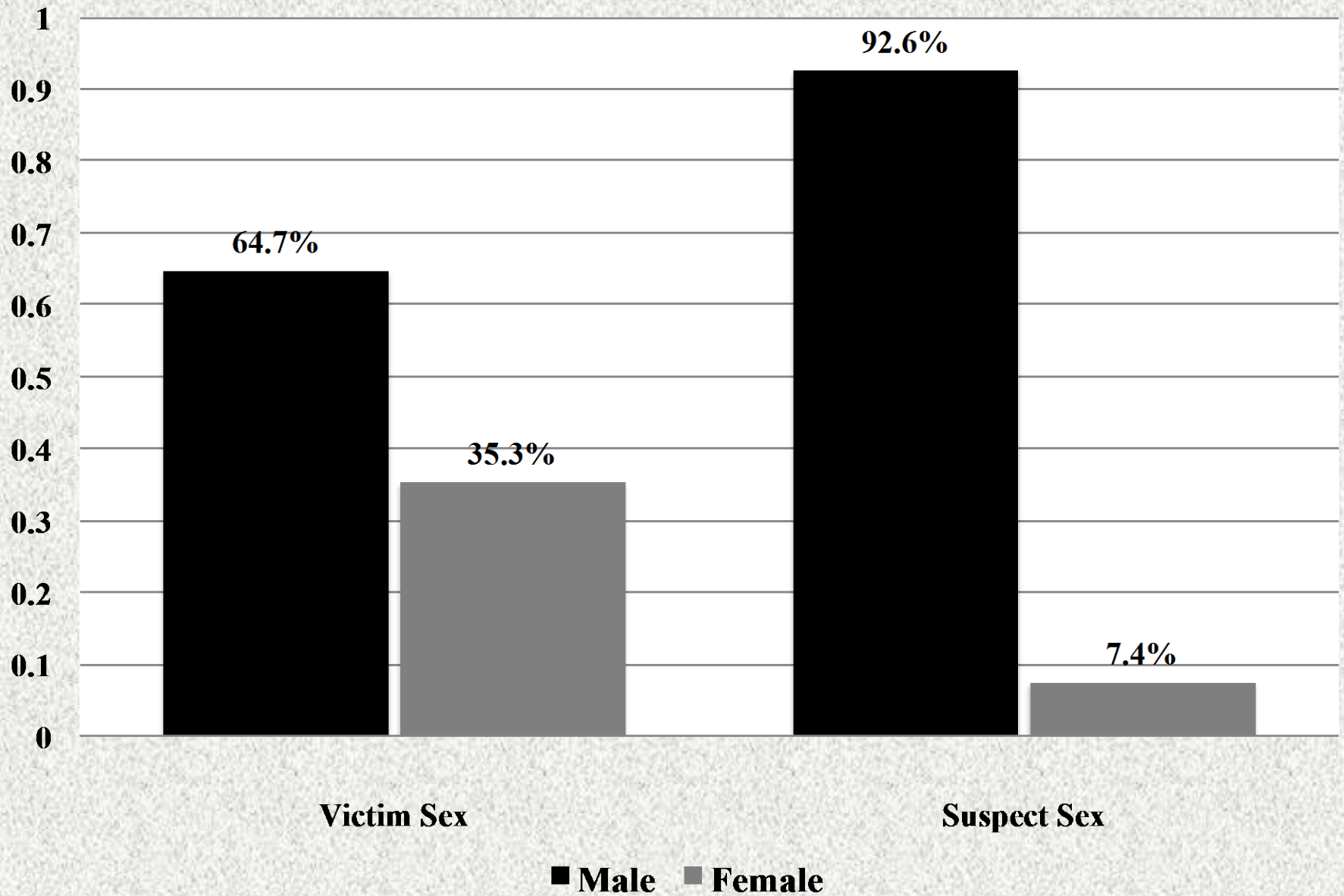


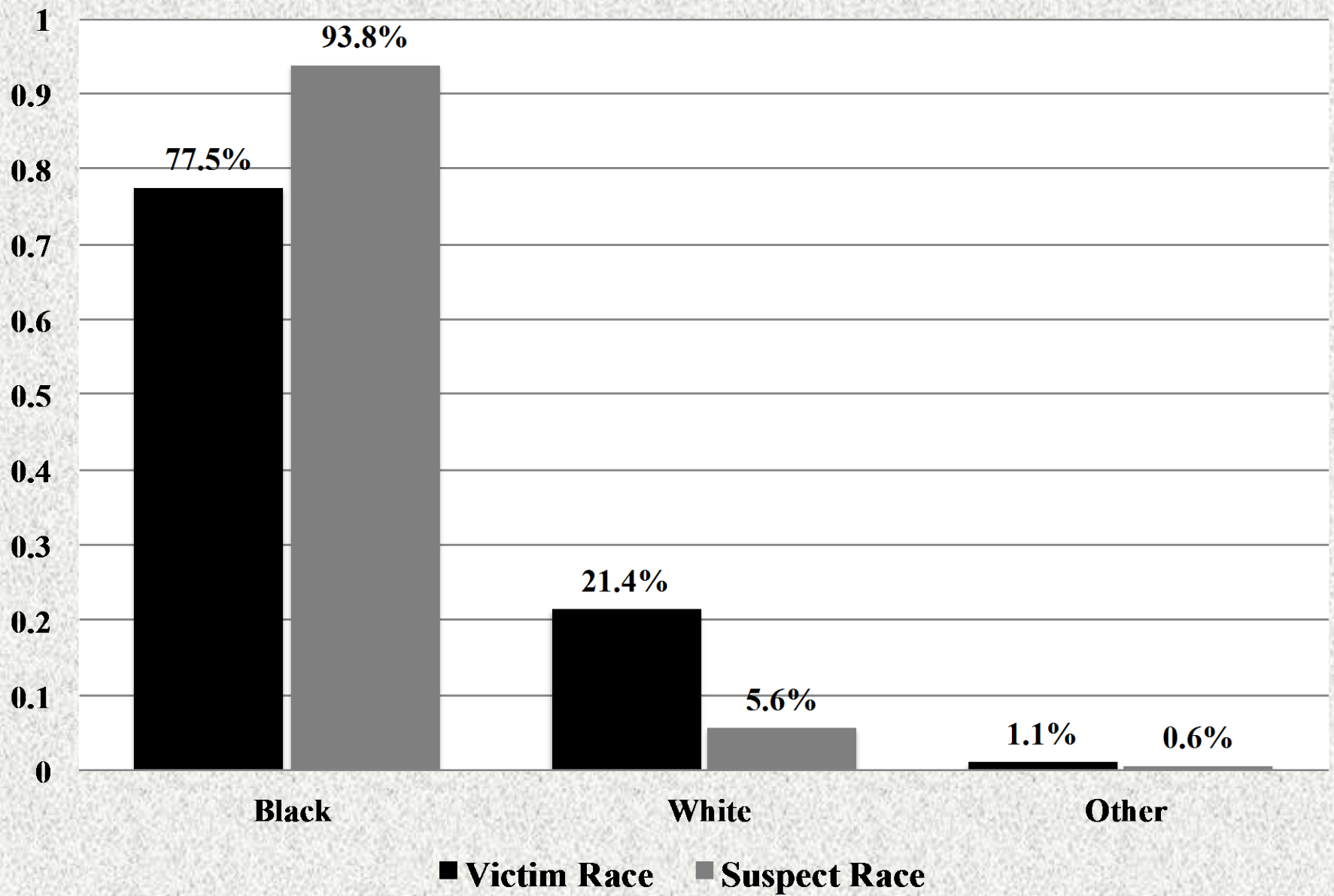
Firearm Violence in St. Louis:  
Trends, Patterns, and Policy  
Implications

Richard Rosenfeld

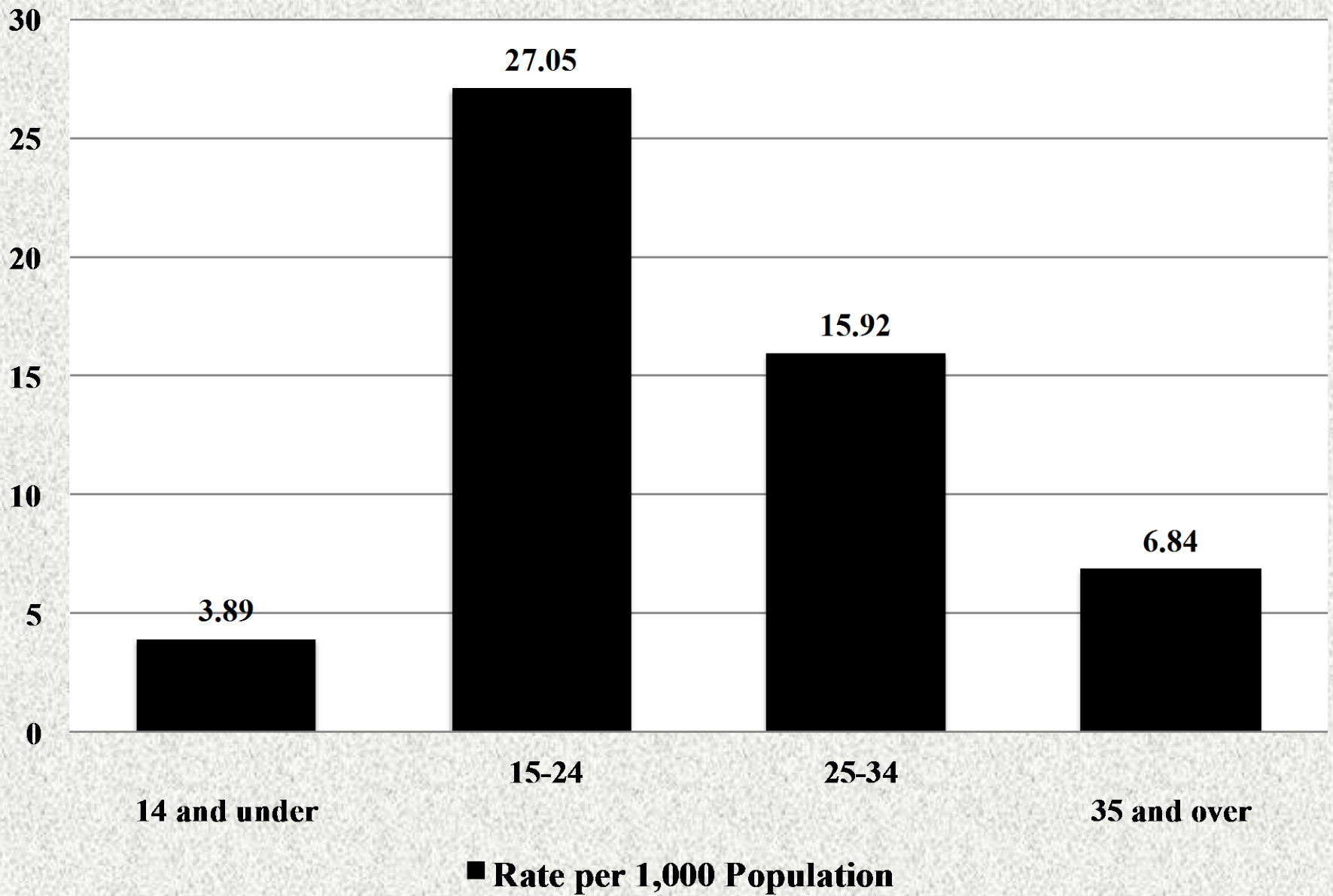
University of Missouri – St. Louis



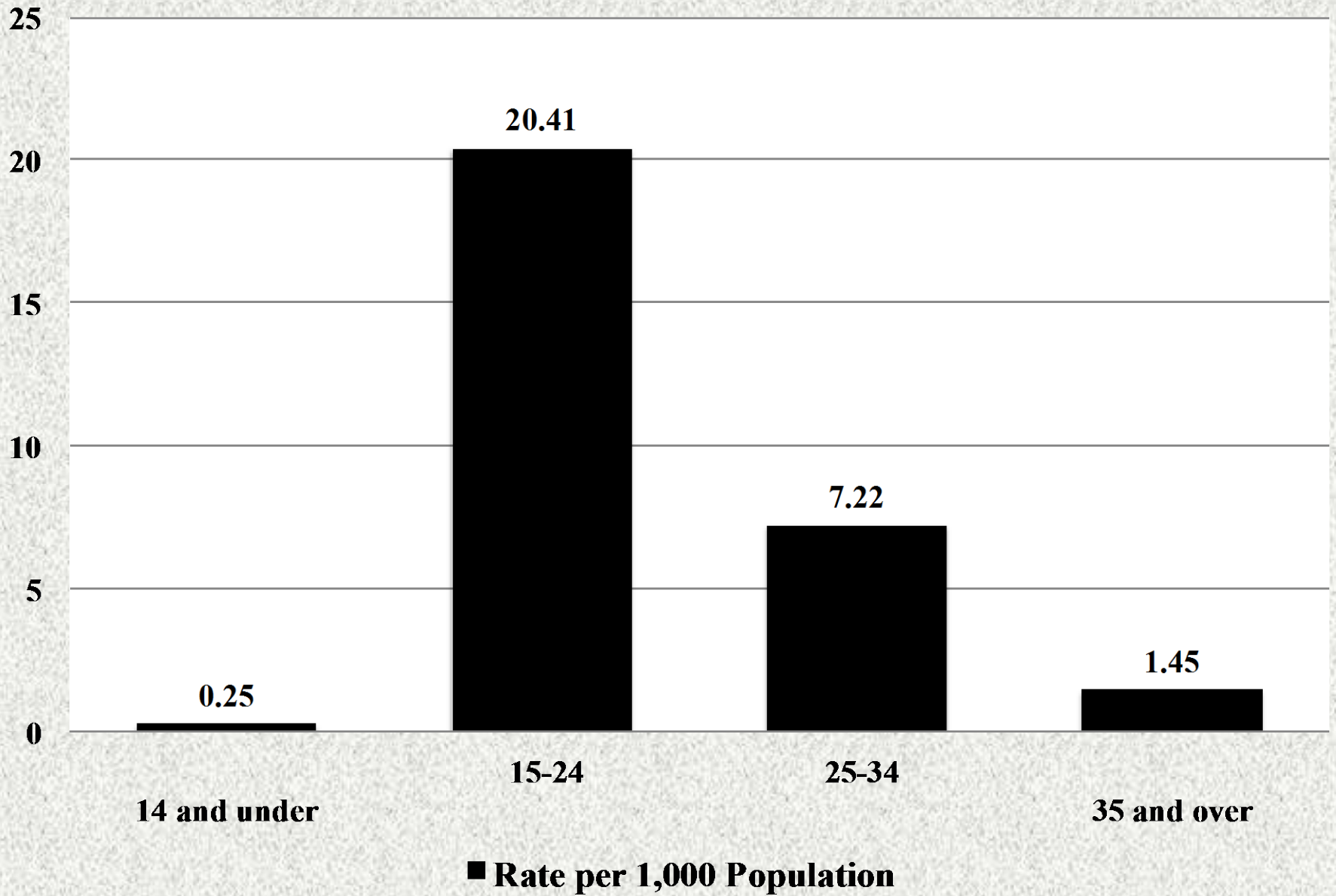
**Figure 1. Sex Distribution of Firearm Violence Victims and Suspects in St. Louis, 2011 - 2015. Data source: SLMPD**



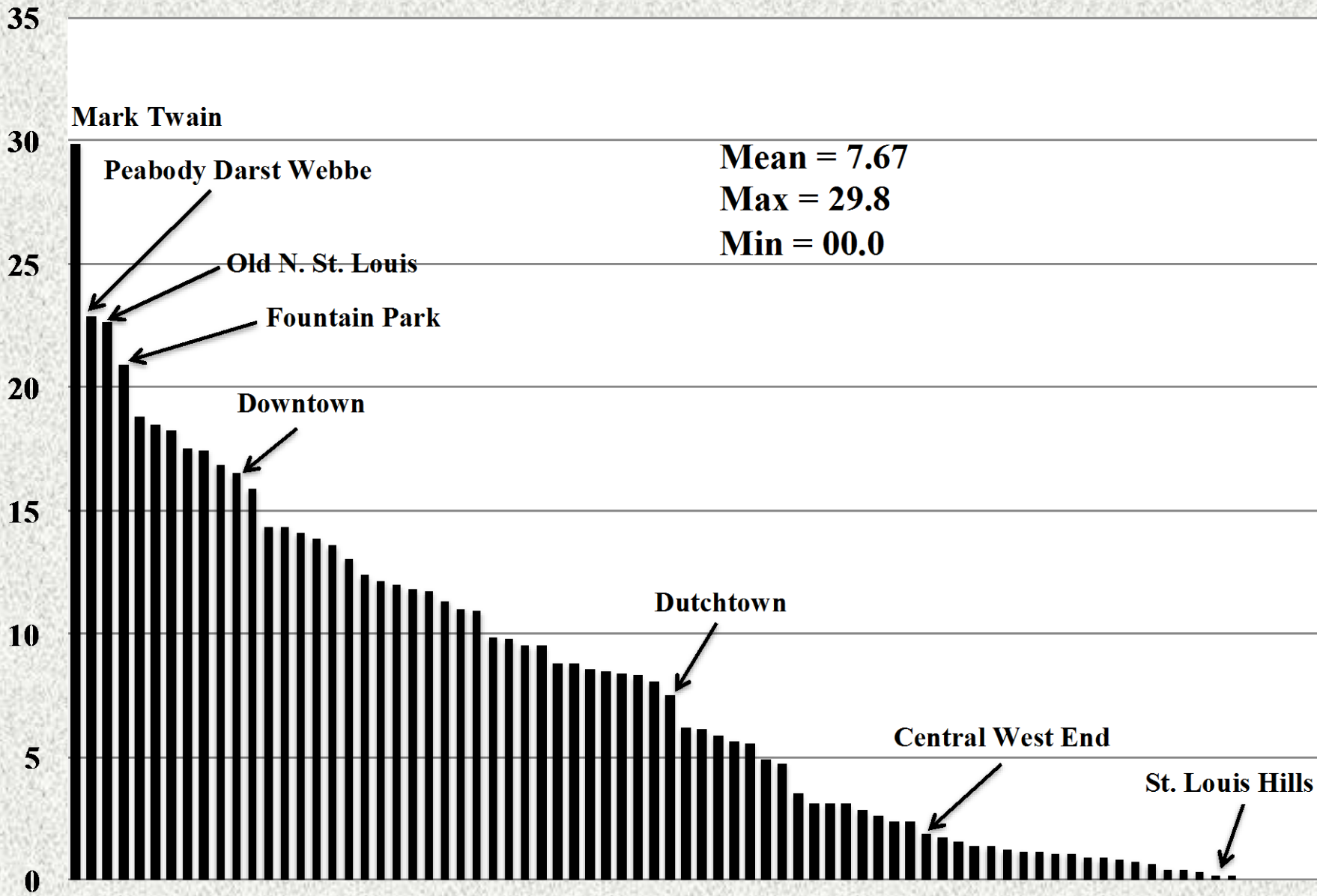
**Figure 2. Race Distribution of Firearm Violence Victims and Suspects in St. Louis, 2011 - 2015. Data source: SLMPD**



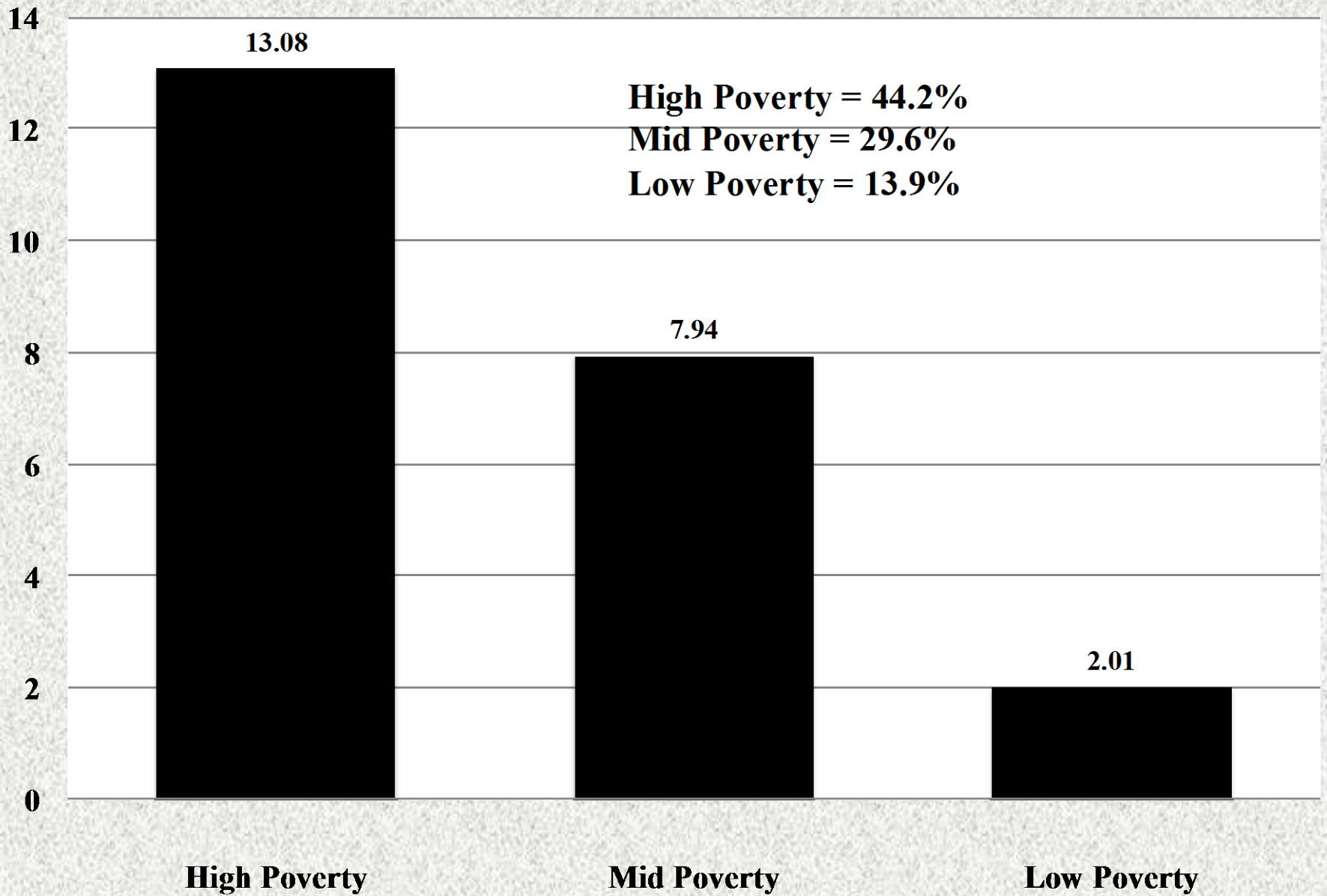
**Figure 3a. Average Yearly Age-Specific Firearm Violence Rates in St. Louis, 2011 - 2015: Victims. Data source: SLMPD; American Community Survey**



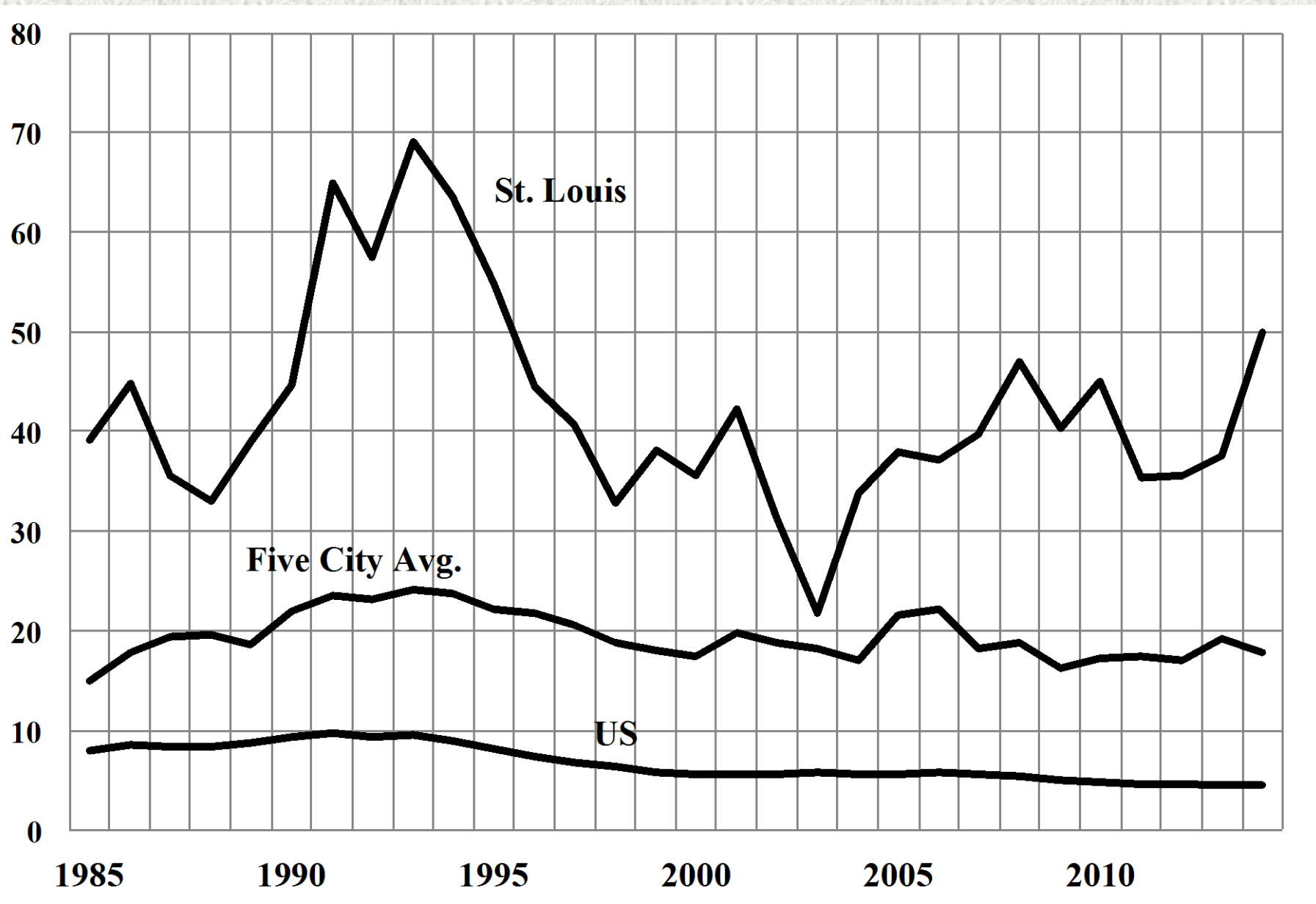
**Figure 3b. Average Yearly Age-Specific Firearm Violence Rates in St. Louis, 2011 - 2015: Suspects. Data source: SLMPD; American Community Survey**



**Figure 4. Firearm Assaults per 1,000 Residents in St. Louis Neighborhoods, 2015.**  
**Data source: SLMPD; American Community Survey**

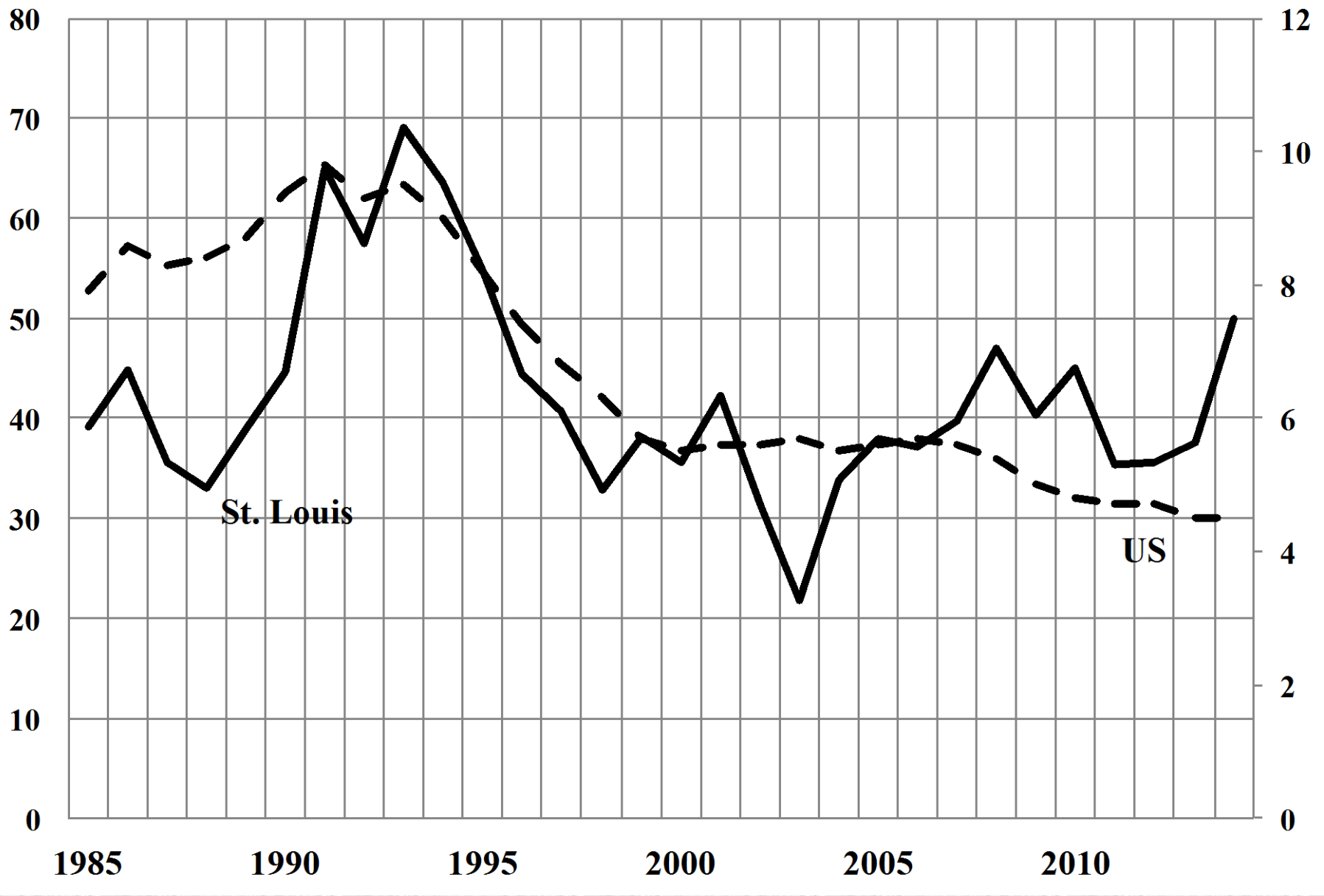


**Figure 5. Firearm Assault Rates per 1,000 Residents by Poverty Level in St. Louis Neighborhoods, 2015. Data Source: SLMPD; American Community Survey**



**Figure 6. Homicides per 100,000 Population in St. Louis, Five Comparison Cities, and the Nation, 1985 - 2014. Data Source: Uniform Crime Reports**





**Figure 7. St. Louis and National Homicide Rates per 100,000 Population, 1985 - 2014.**  
**Data Source: Uniform Crime Reports**