

ORACLE SQL DEVELOPER INSTALL AND CONFIGURATION

CONTENTS

Off Campus Connections to the Database Require VPN	1
Download SQL Developer	1
Install/Extract the Program.....	2
Configure the Program	2
Add a Table.....	3
Add Data to Table	4

OFF CAMPUS CONNECTIONS TO THE DATABASE REQUIRE VPN

When connecting to the “CLASS” database on the admiral.umsi.edu server from off campus, you **must** be in an encrypted VPN session. For instructions on downloading and configuring the VPN client, please visit <http://www.umsi.edu/technology/networking/vpn.html>.

DOWNLOAD SQL DEVELOPER

1. Navigate to the main Oracle SQL Developer page.
<http://www.oracle.com/technetwork/developer-tools/sql-developer/overview/index.html>

2. Click the “Downloads” tab.



3. Read and accept the license agreement

You must accept the [OTN License Agreement for SQL Developer](#) to download this software.

☒ Accept License Agreement | ☐ Decline License Agreement

4. Download the appropriate client. For most Windows users, the 32-bit client for Windows (including the JDK) will work best.

📄 [Oracle SQL Developer for 32-bit Windows](#) (This zip file *includes* the JDK1.6.0_11)
(127 M)

To install and run:


- Download the file above
- Extract sqldeveloper.zip into any folder, using folder names
- Within that folder, open the sqldeveloper folder
- Double-click sqldeveloper.exe

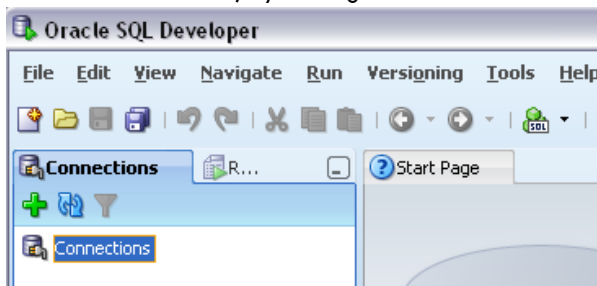
INSTALL/EXTRACT THE PROGRAM

1. After downloading the .zip file, extract the contents. This will not add an entry to your program files list, but will create a “sqldeveloper” folder containing all the files you need.
2. Open the extracted “sqldeveloper” folder and run “sqldeveloper.exe”.



CONFIGURE THE PROGRAM

1. Add a new connection, by clicking the  icon.

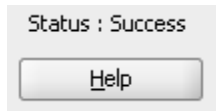



2. Enter appropriate connection details

Property	Value
Connection Name:	This can be any name you wish. We'll enter the database name and hostname "CLASS on Admiral".
Username:	Your SSO ID
Password:	Your initial password is sYYMMDD where the first character is a lower case "s" and YYMMDD is your 2 digit year, 2 digit month and 2 digit day of your birthday.
Connection Type:	Basic
Hostname:	admiral.umsl.edu
Port:	1521
SID/Database Name:	class

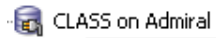
Connection Name	CLASS on Admiral
Username	sso_id
Password	*****
<input type="checkbox"/> Save Password	
Oracle Access	
Connection Type	Basic
Role	default
Hostname	admiral.umsl.edu
Port	1521
<input checked="" type="radio"/> SID	class
<input type="radio"/> Service name	
<input type="checkbox"/> OS Authentication <input type="checkbox"/> Kerberos Authentication <input type="checkbox"/> Proxy Connection	

3. Ensure connection details are correct by clicking the  button and you should see a "Success" above the help button.



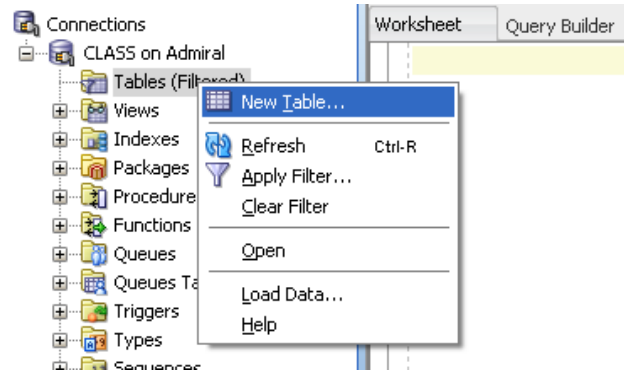
If you receive a "Success" click the  button.

4. Once connected you should see an electrical plug next to the connection to indicate a successful connection.

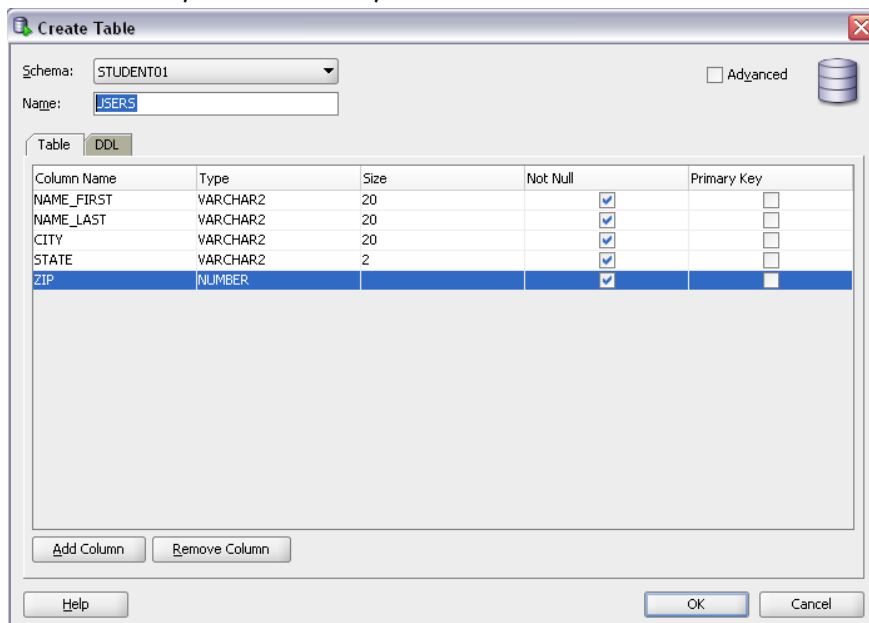


ADD A TABLE

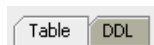
1. Click the plus sign next to your connection, then right click tables and select New Table.



2. Enter table name, column attributes, etc.

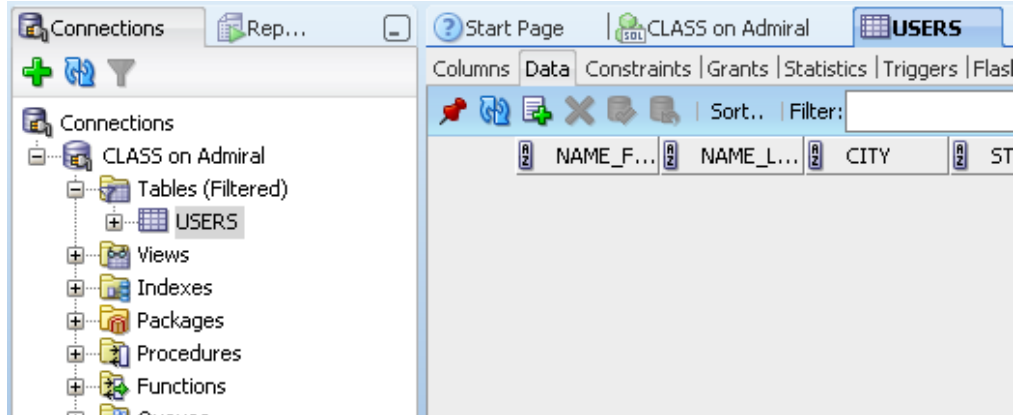



3. To view the actual SQL that will be executed, click the DDL tab.

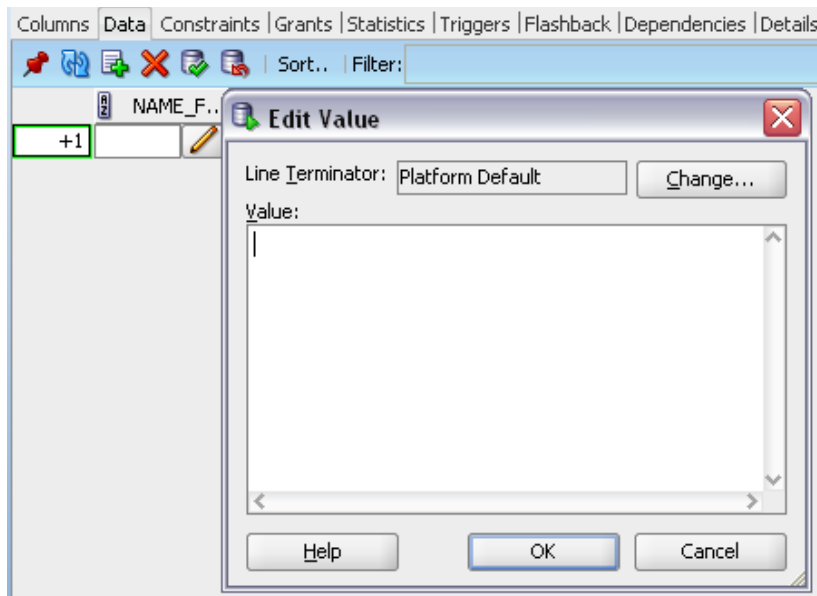




ADD DATA TO TABLE

1. Click the plus sign under “Tables” then click the appropriate table. Then click the “Data” sub-tab.



2. Click the  icon to add a record.
3. You can just start typing in the column box, or hit F2 and/or the pencil icon to open an additional value text-box where you can add data for that field.



4. To commit/save your changes, click the  icon or rollback/don't save your records by clicking the  icon.

