

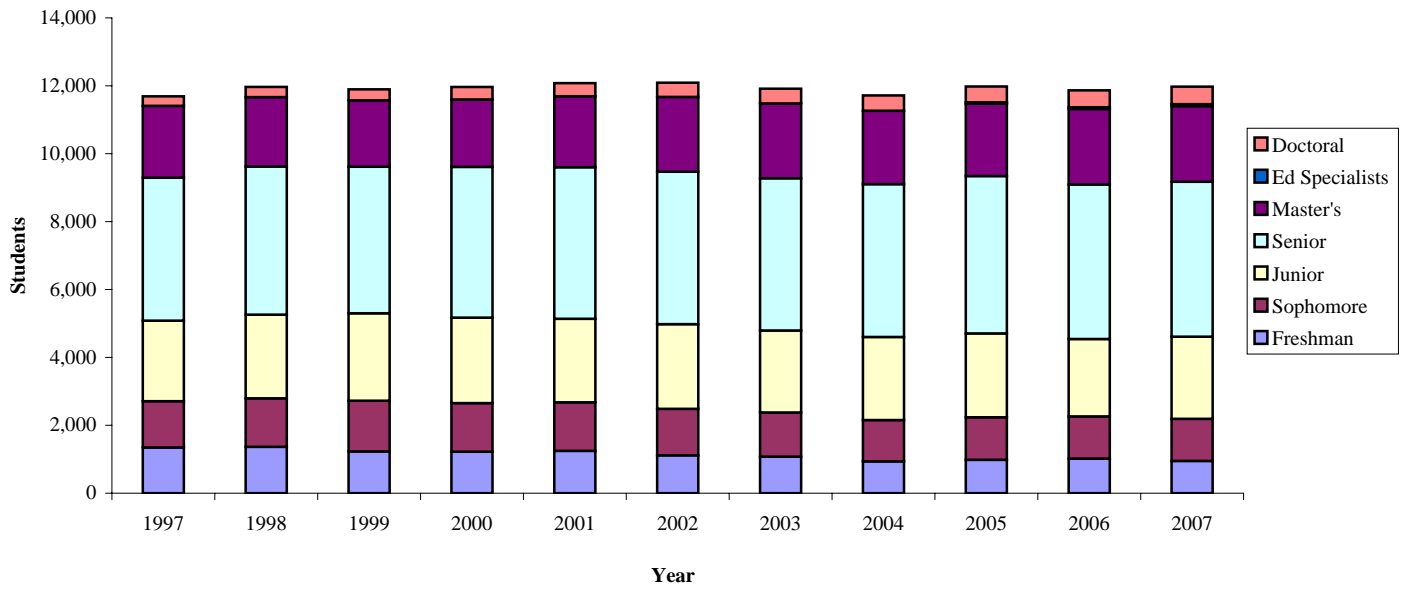


UNIVERSITY OF MISSOURI-ST. LOUIS
TABLE 1-8. FALL ENROLLMENT BY LEVEL, DIVISION, AND ETHNICITY
(On-Campus Headcount)

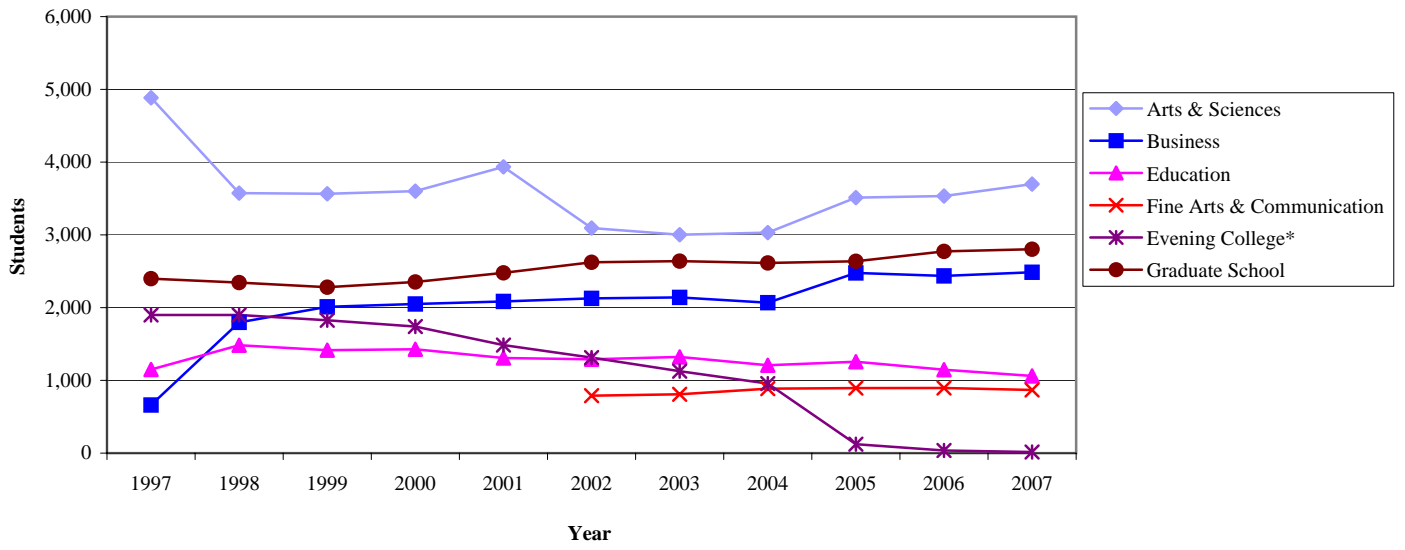
	1997	1998	1999	2000	2001	2002	2003	2004	2005	2006	2007
Student Level											
Undergraduate	9,292	9,623	9,615	9,612	9,601	9,469	9,276	9,102	9,342	9,093	9,173
Graduate	2,398	2,344	2,281	2,353	2,478	2,623	2,639	2,614	2,637	2,773	2,803
First Professional	168	173	173	169	163	158	159	165	164	173	171
TOTAL	11,858	12,140	12,069	12,134	12,242	12,250	12,074	11,881	12,143	12,039	12,147
Class Level											
Freshman	1,346	1,366	1,230	1,221	1,247	1,115	1,074	938	982	1,018	950
Sophomore	1,363	1,428	1,493	1,431	1,430	1,369	1,302	1,216	1,253	1,243	1,240
Junior	2,373	2,464	2,576	2,518	2,459	2,494	2,416	2,447	2,470	2,280	2,419
Senior	4,210	4,365	4,316	4,442	4,465	4,491	4,484	4,501	4,637	4,552	4,564
Master's	2,117	2,043	1,954	1,985	2,090	2,203	2,203	2,162	2,131	2,224	2,228
Ed Specialists									38	51	57
Doctoral	281	301	327	368	388	420	436	452	468	498	518
First Professional	168	173	173	169	163	158	159	165	164	173	171
TOTAL	11,858	12,140	12,069	12,134	12,242	12,250	12,074	11,881	12,143	12,039	12,147
Academic Division											
Arts & Sciences	4,884	3,574	3,565	3,601	3,935	3,094	3,002	3,031	3,512	3,534	3,698
Business	661	1,797	2,011	2,050	2,085	2,127	2,140	2,068	2,477	2,436	2,486
Education	1,149	1,483	1,415	1,428	1,308	1,290	1,322	1,208	1,256	1,147	1,061
Fine Arts & Communication						790	809	886	894	895	868
Engineering	144	345	324	306	292	298	313	324	328	352	342
Evening College*	1,899	1,899	1,826	1,740	1,485	1,313	1,126	956	123	36	15
Graduate School	2,398	2,344	2,281	2,353	2,478	2,623	2,639	2,614	2,637	2,773	2,803
Nursing - RN, BSNC	148	150	137	101	112	113	102	85	115	112	106
Nursing - BSN	379	342	266	258	276	319	386	423	522	459	450
Optometry	168	173	173	169	163	158	159	165	164	173	171
UMSL Express	28	33	71	128	108	125	76	121	115	122	147
TOTAL	11,858	12,140	12,069	12,134	12,242	12,250	12,074	11,881	12,143	12,039	12,147
*In 2005, Evening College included only BGS.											
Ethnicity											
White Non-Hispanic	9,142	9,233	9,015	8,820	8,890	8,901	8,696	8,288	8,268	7,890	7,562
Hispanic	129	149	164	162	149	160	164	195	197	188	193
Asian/Pacific Islander	306	348	349	349	373	360	358	354	413	373	378
Native	24	25	38	38	38	40	43	32	29	34	38
African American	1,565	1,657	1,607	1,645	1,601	1,625	1,645	1,756	1,882	1,915	1,995
Non-Resident Alien	241	299	347	450	481	498	439	430	426	497	498
Unknown	451	429	549	670	710	666	729	826	928	1,142	1,483
TOTAL	11,858	12,140	12,069	12,134	12,242	12,250	12,074	11,881	12,143	12,039	12,147

Source: University of Missouri-St. Louis, Office of the Registrar, *Fall Enrollment Summary* (most recent Fall 2007)

FALL ENROLLMENT BY CLASS LEVEL



FALL ENROLLMENT BY ACADEMIC DIVISION



FALL ENROLLMENT BY ACADEMIC DIVISION

