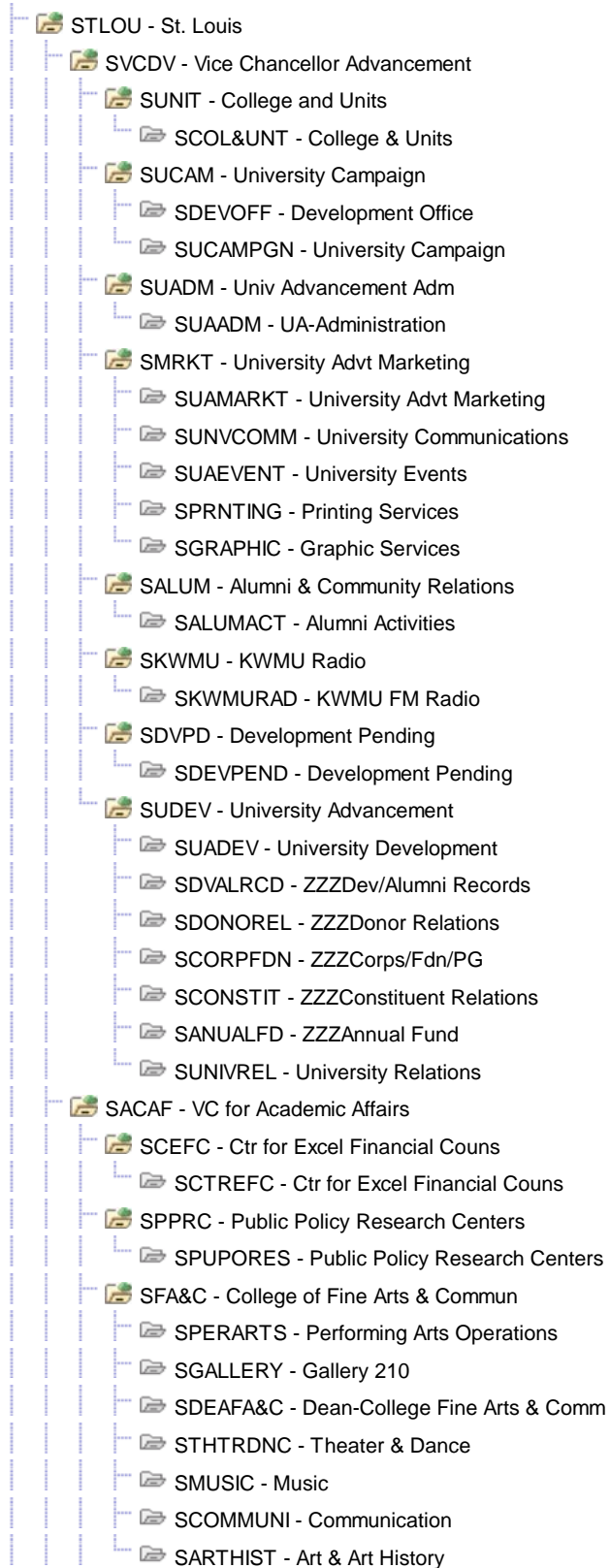


Tree Print Format

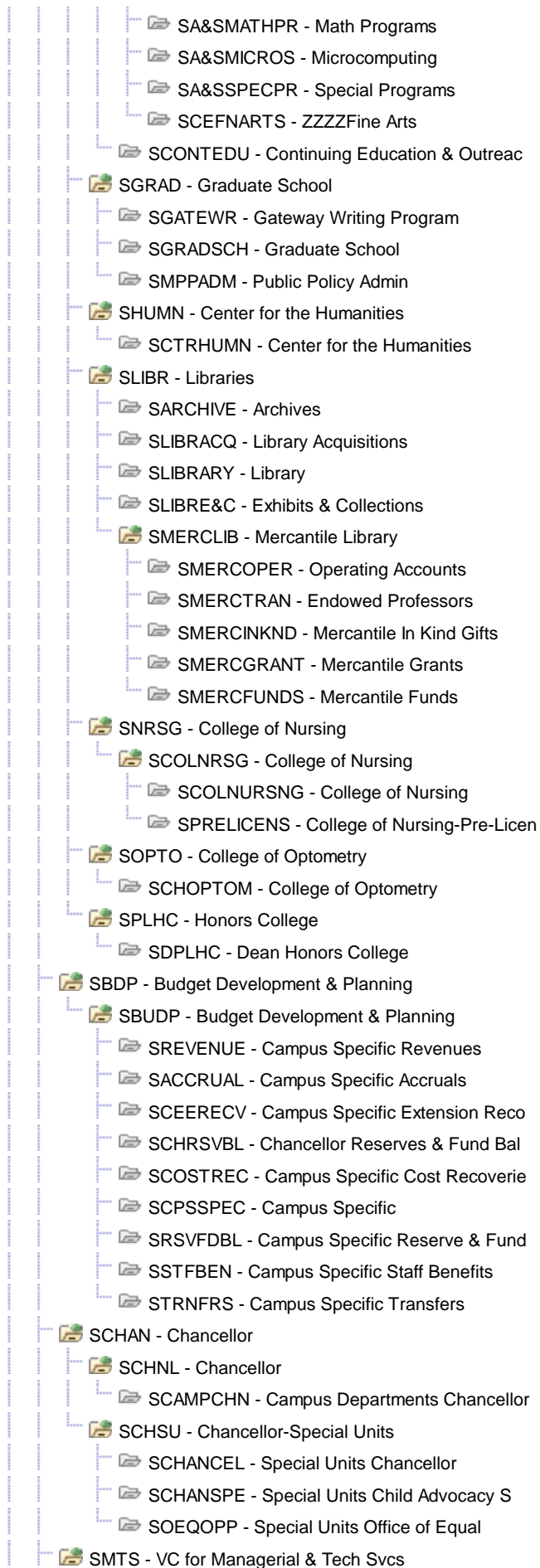
Set ID: UOFMO **Last Audit:** Valid Tree
Effective Date: 04/01/2012 **Status:** Active
Tree Name: DEPT_SECURITY Departmental Security



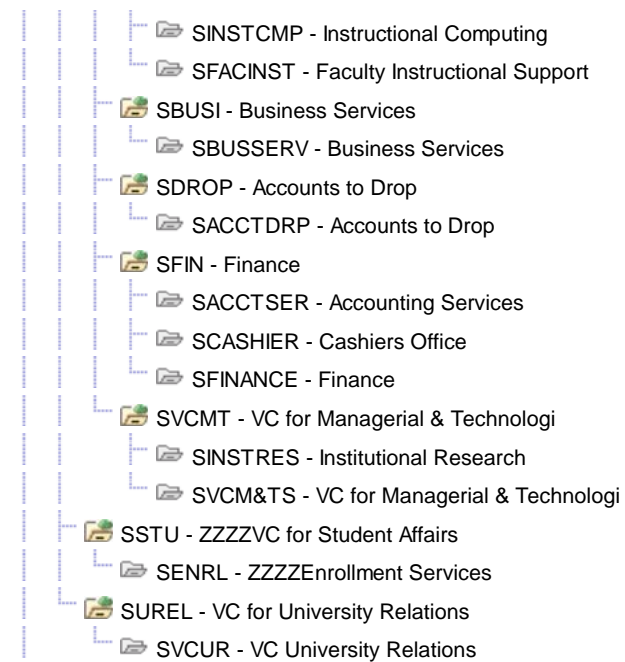
- 📁 SSTAF - Vice Provost Student Affairs
 - 📁 SHOUSING - Campus Housing
 - 📁 SRESLIFE - Residential Life
 - 📁 SCONFER - University Confer & Inn
 - 📁 SMULTICU - Multi-Cultural Relations
 - 📁 SWELCOME - Welcome Center
 - 📁 SUCTROPR - University Center Operating
 - 📁 SADMNAUX - Admin Services Div Aux Svcs
 - 📁 SPRECOLL - Precollegiate Program
 - 📁 STRNSRV - ZZZTransfer Services
 - 📁 SRECSVRT - Recreational Sports/Intramural
 - 📁 SATHLTCS - Athletics
 - 📁 SCTRSTDS - Center for Student Success
 - 📁 SADMIS - Admissions
 - 📁 SDEGAUDT - ZZZDegree Audit Reporting
 - 📁 SREGISTR - Registration & Degree Audit
 - 📁 SSCHOLAR - Scholarships
 - 📁 SSTUFIN - Student Financial Aid
 - 📁 SADVTRN - Student Affairs Services
 - 📁 SCARSERV - Career Services
 - 📁 SCOUNSEL - Counseling Services
 - 📁 SDISABIL - Disability Access Services
 - 📁 SHLTHSRV - University Health Services
 - 📁 SSTRINST - Strengthening Institutions
 - 📁 SSTUSUPP - Student Support Services
 - 📁 SVCSTUAF - Vice Provost Student Affairs
 - 📁 SWOMENCE - Student Affairs Programs
- 📁 SSTUACT - Student Life
 - 📁 SLOPERATE - Student Life Operations
 - 📁 SSTUDLIFE - Student Life
 - 📁 SCONFEREN - ZZZUniversity Conferences
 - 📁 SRESLIFES - ZZZResidential Life
 - 📁 SRECSVRTS - Recreational Sports/Intramural
 - 📁 SHOUSINGS - ZZZCampus Housing
- 📁 SCAC - Child Advocacy Center
- 📁 SRES - VP Research
 - 📁 SMOIMH - MO Institute of Mental Health
 - 📁 SMIMHPLYET - MIMH-Policy & Ethics
 - 📁 SMIMHLIBRY - MIMH-Library
 - 📁 SMIMHCLDFA - MIMH-Child & Family
 - 📁 SMIMHMTLHL - MIMH-Mental Health Systems
 - 📁 SMIMHCNTED - MIMH-Continuing Education
 - 📁 SMIMHADMIN - MIMH-Administration
 - 📁 SCTRNS - Center for Nanoscience
 - 📁 SNEURODY - Center for Neurodynamics
 - 📁 SCTRME - ZZZZ for Molecular Electronics
 - 📁 SMAMTC - Missouri Enterprise
 - 📁 SRSCHADM - Office of Research Administrat
 - 📁 SLDRS - ZZZZLeadership Institute

- └─ SRSCH - ZZZZVC Research
- └─ SENG - UMSL/Washington Univ. Engineer
 - └─ SENGPROG - UMSL/Washington Univ. Engineer
- └─ SA&S - College of Arts & Sciences
 - └─ SGERONTO - Gerontology
 - └─ SPSYCTR - Center for Trauma Recovery
 - └─ SA&SACAD - Academic Advising, Arts & Scie
 - └─ SCACEN - Child Advocacy Center
 - └─ SANTHROP - Anthropology
 - └─ SBIOLOGY - Biology
 - └─ SCHEMIST - Chemistry
 - └─ SCRIM&CJ - Criminology & Criminal Justice
 - └─ SDEANA&S - Dean of Arts & Sciences
 - └─ SECONOMI - Economics
 - └─ SENGLISH - English
 - └─ SFORLANG - Foreign Languages & Literature
 - └─ SHISTORY - History
 - └─ SICTRPEC - Interntl Ctr for Tropical Ecol
 - └─ SIWGSTU - Institute for Women & Gender S
 - └─ SMATH&CS - Mathematics & Computer Science
 - └─ SPHILOSO - Philosophy
 - └─ SPHYASTR - Physics and Astronomy
 - └─ SPOLISCI - Political Science
 - └─ SPSYCHOL - Psychology
 - └─ SPSYSERV - Psychological Services
 - └─ SSOCIOLO - Sociology
 - └─ SSOCWORK - Social Work
- └─ SACDE - Center for Academic Developmen
 - └─ SACADDEV - Center for Academic Developmen
- └─ SACF - VC Academic Affairs
 - └─ SCOLABTV - Des Lee Collaborative
 - └─ SPUBAFFR - Special Units - Public Affairs
 - └─ SSHEARINST - Sue Shear Institute for Women
 - └─ SPUBAFFAIR - Special Units - Public Affairs
 - └─ SCETHICS - Center for Ethics Public Life
 - └─ SBRTPRK - ZZZZiness Research & Tech Park
 - └─ SCTRT&L - Center for Teaching & Learning
 - └─ SSHEARIN - Sue Shear Institute
 - └─ SAIRSCIE - Air Science
 - └─ SMILSCIE - Military Science
 - └─ SVCACAFF - VC Academic Affairs
- └─ SBUSN - College of Business Administra
 - └─ SCTRBIS - Center for Bus & Ind Studies
 - └─ SBUSGRAD - Graduate Related Activities
 - └─ SBUSFUND - Gift and Scholarships
 - └─ SBUSGIFTAC - Gift Accounts
 - └─ SBUSSCHOL - Scholarship Accounts
 - └─ SBUSACAD - Business Academic Advisors & C
 - └─ SBUSADM - College of Business Administra

- [-] SBUSUMMER - Summer
- [-] SBUSMISYS - Mgmt. Info Sys. Area
- [-] SBUSMKTING - Marketing Area
- [-] SBUSMANAG - Management Area
- [-] SBUSLOMAN - Logistics & Op. Mgmt Area
- [-] SBUSIBINST - International Business Inst.
- [-] SBUSGENER - CoBA General
- [-] SBUSFINAN - Finance Area
- [-] SBUSACCTG - Accounting Area
- [-] SDEANBUS - Dean College of Business
- [-] SCTRTRAN - Center for Transp Studies
- [-] SCIS - Center for International Studi
- [-] SCINTSTU - Center for International Studi
- [-] SEDUC - College of Education
 - [-] SSED&K12 - Secondary & K-12 Education
 - [-] SEDECET - Early Chlhd,Elem,TESOL&SpEd
 - [-] SRISEDUC - ZZZZRegional Institute Science
 - [-] SPHYSEDU - ZZZZPhysical Education
 - [-] SEDUCSTD - ZZZZEducational Studies
 - [-] SE&ECEDU - ZZZZElem & Early Childhood Edu
 - [-] SBEHVSTD - ZZZZBehavioral Studies
 - [-] SBRIDGPR - ZZZZBridge Program
 - [-] SCHARCTZ - Ctr Character & Citizenship
 - [-] SDEANCOE - COE Operating Accounts
 - [-] STECHCTR - Technology & Learning Ctr
 - [-] SIMSELT - Inst Math Science Edu&Lrn Tech
 - [-] SCHOCD - Center for Human Origin & Cult
 - [-] SCLINEXP - Clinical Experiences
 - [-] SDEANEDU - Dean College of Education
 - [-] SEDACADV - COE Advising and Prof Exp
 - [-] SEDCOUNS - Counseling - College of Educat
 - [-] SEDLDRPO - Educational Leadership & Polic
 - [-] SEDPSYCH - Educational Psychology
 - [-] SEDR&EXF - Education Research & External
 - [-] STCH&LRN - Teaching & Learning
 - [-] SUCDCTR - University Child Developmentl
- [-] SEVEC - Evening College
 - [-] SDEANEVE - Dean Evening College
- [-] SEXTN - Extension Division
 - [-] SCEGATE - Gateway Writing Project
 - [-] SLDRSHIN - Executive Leadership Institute
 - [-] SASCNTED - A&S Continuing Education
 - [-] SA&SADVCR - Advanced Credit
 - [-] SA&SCDEAN - A&S Associate Dean
 - [-] SA&SECONED - Economic Education
 - [-] SA&SGWPRO - ZZZZGateway Writing Project
 - [-] SA&SINNOV - Innovation
 - [-] SA&SJRSCI - Junior Science
 - [-] SA&SLABOR - Labor Studies



- SSFTY - Institutional Safety
 - SSECSVCS - Security Services
 - SENVHLSF - Environmental Health & Safety
 - SGROUNDS - Grounds
 - SASDSFTY - ASD Institutional Safety Proje
 - SPARKING - Transportation & Parking
 - SPOLICE - UMSL Police
- SCFM - Campus Facilities Mgmt
 - SPLNCONS - Planning & Construction Projec
 - SFACPLAN - Facilities Planning
 - SPROJECTS - Planning & Construction Projec
 - SCAPPROJ - Capital Projects
 - SFACSERV - Facilities Services
 - SCUSTODIAL - Custodial Services
 - SCUSTOMER - Customer Services
 - SFACLPROJ - Facilities Services Projects
 - SFACSTORE - Facilities Storeroom
 - SMAINTSER - Maintenance Services
 - SGROUNDSS - Grounds
 - SPROPA&D - Property Acq & Dev
 - SUTILITY - Campus Utilities
 - SASDFIN - ZZZZASD Finance Support
 - SADMNSER - Administrative Services Office
- SASD - Vice Chancellor Administrative
 - SAFCS - ASD Finance Support
 - SASDF&C - ASD Finance Support
 - SPMG - Properties Management Group
 - SUMSLPRP - UMSL Properties
 - SCMPH - ZZZCampus Housing
 - SRECS - ZZZreational Sports/Intramural
 - SADAU - Admin Services Div Aux Svcs
 - SASDV - VC Administrative Services
 - SVCADMSE - VC Administrative Services
 - SATHL - ZZZZZAthletics
 - SFACL - Facilities Services
 - SGENSERV - General Services
 - SASDFACL - ASD Facilities Mgmt Projects
 - SCUSTOD - Custodial Services
 - SFACLSER - Maintenance Services
 - SFCPL - Facilities Planning
- SHRES - Human Resources
 - SVOLUNTR - Volunteer Services
 - SHUMNRES - Human Resources
- SITS - Information Technology Svcs
 - SITSOPER - ITS Operations
 - STECHSVC - Technology Services
 - STELESVC - Telephone Services
 - SUSERSVC - User Services
 - SITSADMN - ITS Administration



Return