

Digital Darkfield Decompositions

P. Fraundorf et al*

Physics & Astronomy, U. Missouri-StL (63121), St. Louis, MO, USA

(Dated: August 1, 2002)

This is working draft of a note, perhaps with several additional authors, on prospects for digital implementation of optical darkfield strategies which have for decades played a key role particularly in the conventional electron microscopy of materials. Applications to the microscopy of periodic structures are described in the context of recent developments in the mathematical harmonic analysis community. Examples of work with electron phase contrast images of heterostructure on the nanoscale are offered, which push present day limits using sharp-edged Fourier windows alone. Comments, corrections, and contributions both on this communication, and on ways to optimize the performance of these and related tools for future application, are invited. /pf

PACS numbers: 03.30.+p, 01.40.Gm, 01.55.+b

I. INTRODUCTION

The word wavelet is less familiar in microscopy than in other areas of applied math. However, microscopists have long been versed at interpreting images which trade spatial resolution for information on transverse momentum (e.g. on scattering direction, for example). As a result, microscopists (particularly those involved in transmission electron microscopy of crystals) have been developing skills connected to the use of combined space and frequency decompositions since well before the coining of the word wavelet in the 1980's¹. This is partly because microscopists do their decompositions with help from optical (rather than digital) computation, wherein their analysis hides behind the more familiar appellation: darkfield imaging (cf. Hirsch et al.²).

Here we discuss a few ways microscopists, and other periodicity analysts as well, might bring evolving digital tools of harmonic analysis to bear on problems traditionally addressed in analog fashion on live images using sharp-edged back focal-plane apertures and a variety of time-honored optical darkfield techniques. In the process we seek to bring their challenges to the attention of the oft-times application-inspired harmonic analysis community^{3,4}.

II. THE DARKFIELD IMAGE TRANSFORM

The elementary space plus frequency decomposition in signal processing is sometimes viewed optically as a windowed Fourier transform, in which the window and exponential kernel of the original transform combine to become the new kernel of the harmonic transform⁵. In this context, such “windowlet” transforms in 1D might

be written as

$$\psi[t, f_o, \Delta f] \equiv \Delta f \int_{-\infty}^{+\infty} s[t'] h\left[\Delta f(t' - t), \frac{f_o}{\Delta f}\right] dt'$$

where $s[t]$ is the input function, t is a direct-space (or time) shift parameter, f_o is a frequency shift parameter, and Δf is a frequency-space scale parameter (reciprocal to the position/time-scale parameter Δt). Note that we are using dimensioned parameters here, even though the kernel function $h[\xi, \eta]$ is a function of dimensionless quantities. If the kernel can be written as the product of a window function $w[\xi]$ and a modulation function $g[\xi, \eta] = e^{-2\pi i \xi \eta}$, then the Fourier transform of the windowlet becomes simply

$$\Psi[f, f_o, \Delta f] = S[f] W\left[\frac{f - f_o}{\Delta f}\right]$$

where $S[f]$ and $W[\eta]$ are the Fourier transforms of $s[t]$ and $w[\xi]$, respectively.

When the Fourier window is the simplest type of optical window to manufacture, namely a sharp-edged aperture of width Δf centered at frequency f_o , then $W[\eta] = \text{Rect}[\eta] \equiv \text{If}[|\eta| < \frac{1}{2}, 1, 0]$. Hence the direct space window is $w[\xi] = \frac{\sin[\pi \xi]}{\pi \xi} \equiv \text{sinc}[\xi]$.

When $|f_o| < \frac{\Delta f}{2}$, microscopists refer to the map of intensity $\psi^* \psi$ as a *brightfield image* (exclusively so when illumination is parallel) because it includes the unscattered beam. Regions in the image without scatterers are therefore bright. Conversely, when the image does not include the unscattered beam microscopists call the $\psi^* \psi$ map a *darkfield image*. The corresponding phase maps, by comparison, may contain very precise information on the lattice strain tensor in projection. This transform lends itself to rapid calculation of a series of fast Fourier darkfield decompositions that bridge the gap in a variety

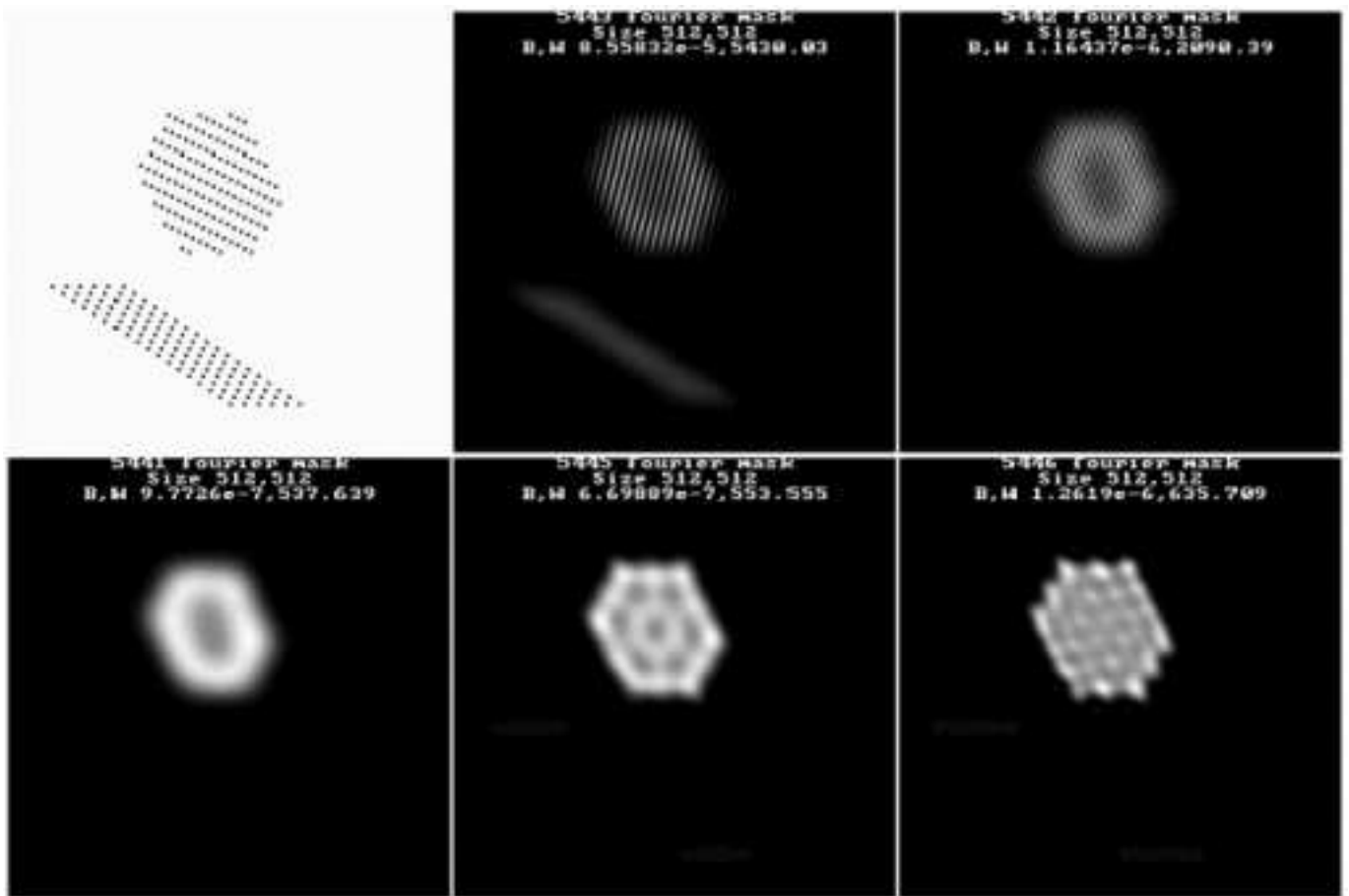


FIG. 1: Amplitude images of a 2D spatially-delimited periodic array (e.g. a small crystal in projection). Inset a) is the starting brightfield dataset; b) is an image formed from a conjugate symmetric pair of diffracted beams and the DC peak; c) is the same as inset b without the DC peak – note the doubled periodicity because of the doubled spacing between interfering tiles; d) is the amplitude of a complex darkfield formed using a rather small single tile; e) is the same as inset d using a larger tile in frequency space; f) is the same as inset d using an even larger tile in frequency space – note the uncertainty principle in action in this last series of three.

of ways between direct and reciprocal versions of a given dataset. Issues related to integrability, admissibility, and regularity are considered in more detail below.

Because this sinc (or Shannon/Littlewood-Paley) windowlet is the one with which darkfield microscopists have the most optical experience, it's uses will be the focus of this paper. We expect, for work on atomic and lattice resolution digital images, that applications familiar to microscopists optically will benefit from the much more diverse set of transforms possible digitally. One purpose of this paper is therefore to bring these applications to the attention of the signal processing community.

In particular, strategies for reciprocal space “tiling” so as to sample all of frequency space are an area of active interest in the signal processing community today (cf. Flesia et al.⁶). However, the focus is often largely on compression techniques. A very different set of considerations is at work in the microscopy community, particularly in the study of high resolution transmission electron microscope images of periodic lattices, and defects or in-

terfaces associated therewith. With recent developments in atomic-resolution digital microscopy allowing acquisition of near-gigabyte images by a variety of techniques, the opportunities for signal processing detective work on the atomic scale are quite rich.

Before we move on to the 2D transform, we should ask whether this choice of $w[\xi]$ meets the usual qualifications for wavelet decomposition. Although it is a direct-reciprocal reversal of the “short-time Fourier window” decomposition oft mentioned in the literature on wavelets, this sinc-function window has zero mean and is square integrable. It's transform also meets the admissibility condition (at least in the parallel illumination case) provided $|f_0| > \frac{\Delta f}{2}$, i.e. when the frequency window does not include the zero-frequency point or “DC peak”. This of course is consistent with the standard definition of “darkfield image” in microscopy, i.e. an image formed from waves which do not include the unscattered beam so that regions free of scatterers look dark. The weak point of the decomposition, of course, is that it exhibits

sinc-system convergence $\propto \frac{1}{t}$ as $t \rightarrow \infty$, at one end of the Harr to Sinc system continuum⁷. Although the number of vanishing elements required depends heavily on the application⁸, this is a practical handicap for example when locating nanocrystal edges in otherwise noisy images. Improved spatial convergence is hence one area where digital signal processing (for example by refining a decomposition to recognize lattices of discrete bumps in the 0.2 nanometer size range) might contribute downstream. Even the utility of existing decompositions with good frequency resolution (e.g. brushlets⁹ and ridgelets⁶) for these applications remains to be examined.

In the 2D case, using cartesian vectors and a common bandwidth Δf for each direction, the windowlet transform becomes

$$\psi[\mathbf{x}, \mathbf{f}_o, \Delta f] \equiv (\Delta f)^2 \int_{-\infty}^{+\infty} s[\mathbf{x}'] h\left[\Delta f(\mathbf{x}' - \mathbf{x}), \frac{\mathbf{f}_o}{\Delta f}\right] d^2 \mathbf{x}'$$

If the kernel h can further be written as the product of a window function $w[\xi]$ and a modulation function $g[\xi, \eta] = e^{-2\pi i \xi \bullet \eta}$, the Fourier transform of the windowlet becomes

$$\Psi[\mathbf{f}, \mathbf{f}_o, \Delta f] = S[\mathbf{f}] W\left[\frac{\mathbf{f} - \mathbf{f}_o}{\Delta f}\right]$$

Finally, a square Fourier window (for simplicity) looks like $W[\eta_x, \eta_y] = \text{Rect}[\eta_x] \text{Rect}[\eta_y]$. This results in a 2D direct-space sinc-window of the form $w[\xi_x, \xi_y] = \frac{\sin[\pi \xi_x]}{\pi \xi_x} \frac{\sin[\pi \xi_y]}{\pi \xi_y}$. The shape of the Fourier window is of course arbitrary mathematically. For optical applications, particularly in the electron microscopy case when the physical aperture size is in the 10 to 100 micron size range, circular rather than square apertures are more common (and easier to manufacture as well).

III. NON-TILED CIRCULAR, GAUSSIAN, AND BAYESIAN BACKGROUND-SUBTRACTED DARKFIELDS

One feature of the sinc windowlets defined above, which may at first glance be unfamiliar to microscopists, is that they are generally complex. Fourier filtering of initially real images traditionally preserves their conjugate symmetry in reciprocal space, via selection of regions (e.g. to window) that are symmetric about the DC peak¹⁰. The complex darkfield images described here do not. As a result, however, they reclaim something that is normally lost in Fourier filtering of images: The continuous (fringe-free) illumination of scattering centers (e.g. of crystals in the field diffracting electrons into the selected Fourier aperture). This is because darkfield imaging with windows which may be asymmetric about the DC peak, of the sort described here, relegates periodicity fringes in the images largely into phase, rather than amplitude, variations in the image. By simply examining amplitude

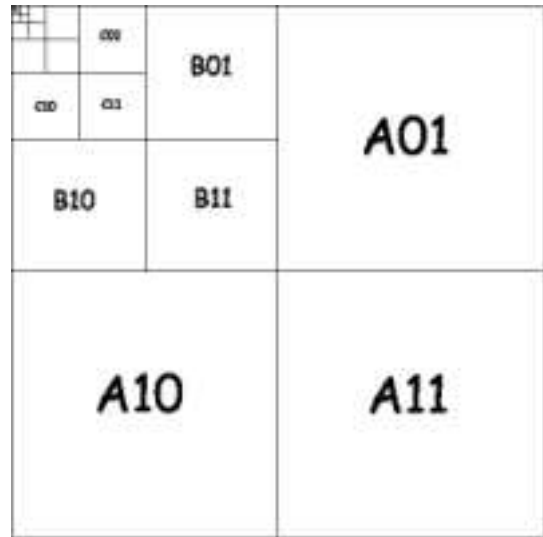


FIG. 2: Traditional wavelet tiling of reciprocal space.

(or amplitude squared) across the images, these variations disappear just as they do in the microscope when image intensities (and not phases) are recorded in the imaging process. These advantages of asymmetric darkfield are illustrated in Fig. 1.

As long as tiling is not a requirement of the analysis process, for example when one simply wants to see where in the image the source of a peak in the power spectrum is located, any imaginable window function (not including the DC peak) may be used to form a darkfield image. Given the growing ability of microscopes to provide large digital images containing abundant crystal lattice fringe information, one can thus use these wavelets in the computer to do darkfield imaging just as in a transmission

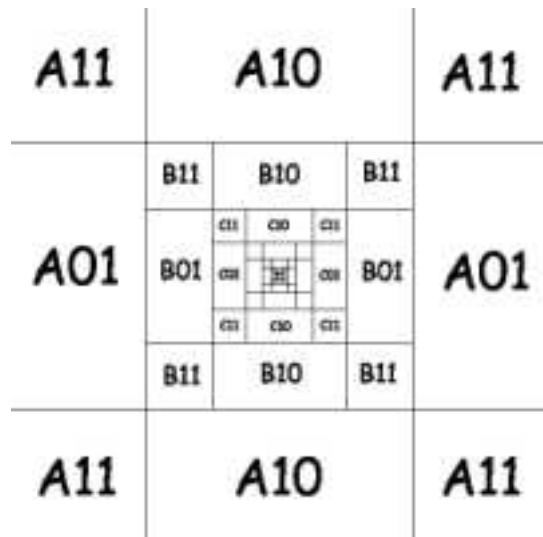


FIG. 3: Wavelet tiling rearranged into “diffraction pattern” format, with a centered DC peak.

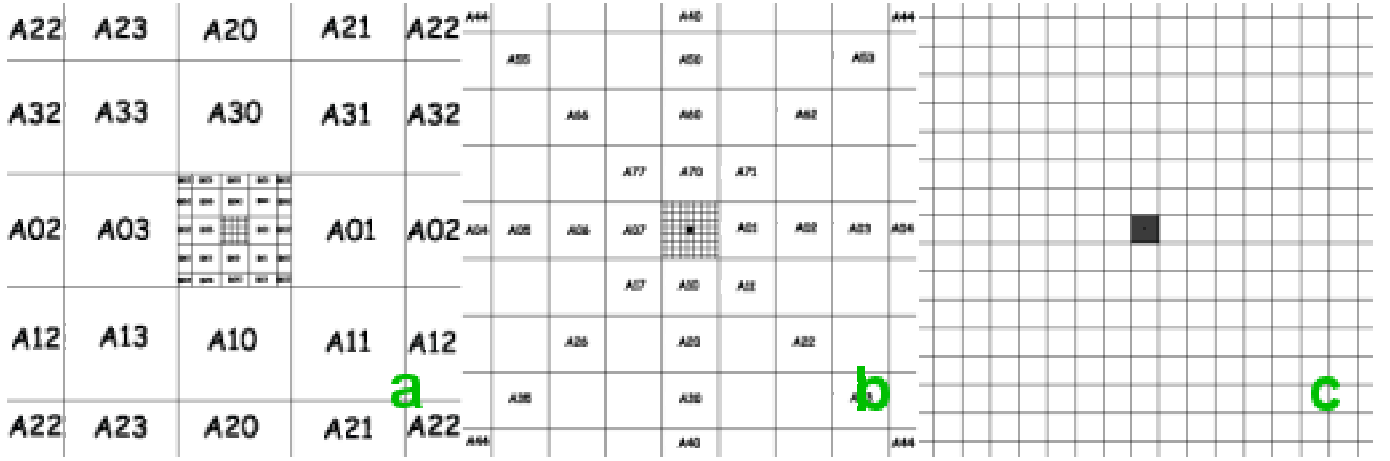


FIG. 4: Linear decomposition hierarchies with 4-fold symmetry: (a) 4×4 , (b) 8×8 , (c) 16×16 .

electron microscope, with the added advantage that one can be much more creative, and less limited by the physical challenges of aperture design, than is possible in the microscope.

For example, microscope apertures usually have circular symmetry (at least by design). In the case of a circular opening in a microscope's back-focal plane, $W[\eta, \phi] = \text{Rect}[\eta]$ in polar coordinates, and the direct-space window function becomes the well-known Airy distribution $w[\xi, \phi] = \frac{J_1[2\pi\xi]}{2\xi}$ expressed in terms of the Bessel function of the first kind J_n . Although sharp-edged apertures are often easiest to manufacture (at least for electron optic applications), convergence in mathematical applications can be improved by the use of soft-edges (e.g. the Gaussian Fourier window functions associated with the Morlet wavelet). Creative choice of the window function can do more than improve regularity. For example, such functions can be “tuned” with Weiner filtering for the Bayesian removal of broad spectrum background in images^{11,12}, or for the recognition of patterns of interest in images, such as edges. Digital dark-field analysis, in that sense, provides yet another context for their continuing refinement.

In addition to use of different “back-focal apertures” of the form $W[\eta]$, this strategy also facilitates a number of “decoherence” strategies, some of which (like hollow-cone darkfield) have been implemented optically, and others which have not. This is done by forming separate darkfield images in more than one chosen (typically local) range of frequencies, and then either combining or cross-correlating the intensities (square amplitudes) found therein. Thus annular darkfield images might be formed by adding intensities in patches forming one or more annular rings in the power spectrum, thus targeting regions responsible for a given “powder diffraction” signature. Alternatively, one might cross-correlate intensities found in patches associated with a specific pair of reflections, thus searching for cross-fringes from a particular single crystal lattice orientation in a large image.

IV. TILING STRATEGIES AND DECOMPOSITION HEIRARCHIES

On the subject of decomposition hierarchies (or Daubechies’ “frames” formed using a discrete sublattice), consider the attached image files in sequence. Figure 2 illustrates the traditional array of horizontal (01), vertical (10) and diagonal (11) components generated as a 2D image is broken down into wavelets (Axx) along with a rescaled (reduced resolution, or “brightfield”) image in the upper left corner, which of course may be as shown itself decomposed (Bxx, etc.) at each stage with less direct space but more reciprocal space resolution. One might characterize this as a series of 2×2 decompositions.

Figure 3 simply rearranges that 2×2 heirarchy according to the “locations” in frequency space about which each frame is centered, with the DC peak in the field located in the center. Note that the first stage (A) components correspond to higher frequencies, and also higher bandwidths (more resolution) than do the higher stage (e.g. B, C) components – a feature that distinguishes wavelets from short time Fourier decompositions, for example, and makes them better for wide dynamic range phenomena and “situations where better time-resolution at high frequencies than at low frequencies is desirable”³. Note also, however, that the angular resolution of frequency (subtended at the DC peak) at any given decomposition stage is very poor.

Figure 4a does the same “recentering”, except this time for a 4×4 decomposition heirarchy. Here, the angular resolution is improved, and the “wraparound” edge effects (most noticable at the corners) affect fewer elements. Because frequency as well as spatial resolution are crucial in our work, if we have $n \times n$ images where $n > 16$, then the optimum tiling for us is not 2×2 or 4×4 , but something like $\sqrt{n} \times \sqrt{n}$. Figures 4b and 4c sketch the 8×8 and 16×16 decompositions in this series. Remarkably, in a way which may be largely independent of the basis functions involved, when this decomposition is taken to

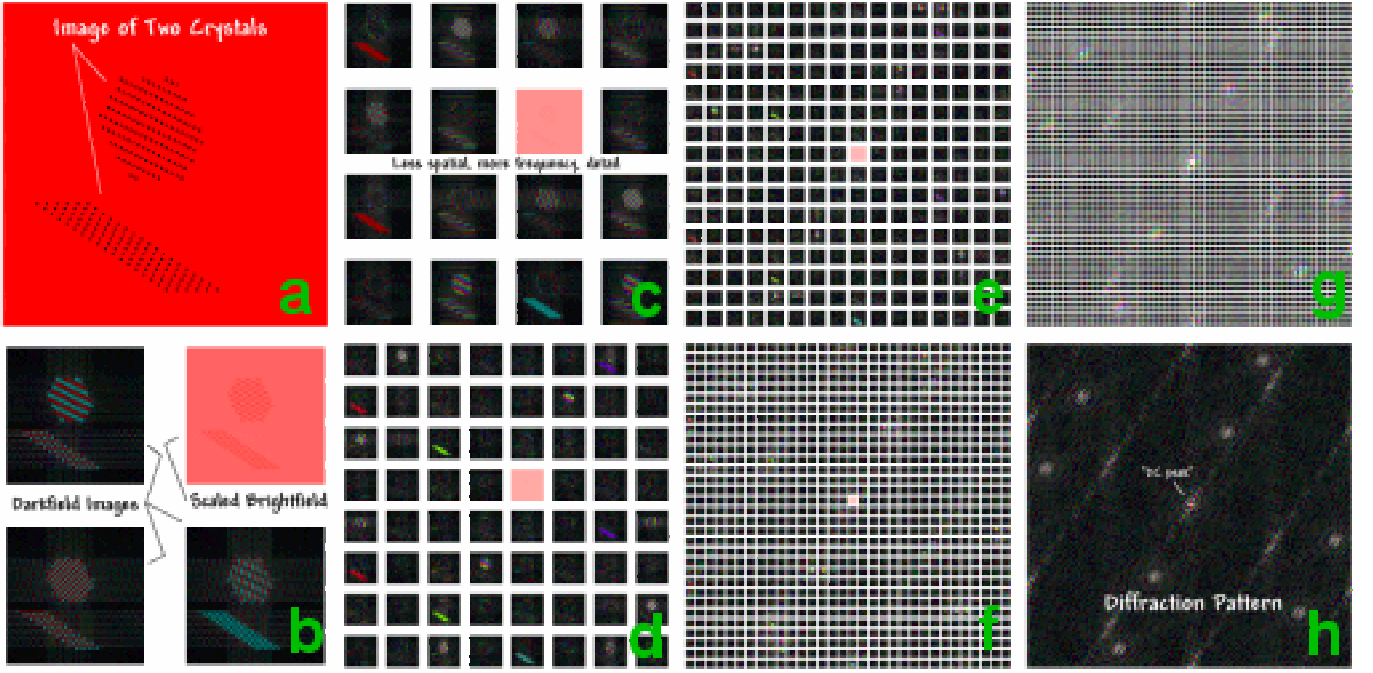


FIG. 5: Decomposition series of $n \times n$ square Fourier window decompositions running from a real direct space image in (a) with $n = 1$ to the Fourier transform in (h) with $n = 128$. Hue denotes the Fourier phase of each pixel, with red and cyan corresponding to the positive and negative reals, respectively.

it's $n \times n$ limit on an $n \times n$ image, one gets simply the Fourier transform itself as illustrated in Fig 5.

None of the foregoing discusses the functions used for the decompositions, but only their locations and domains in reciprocal (and scale) space. The simplest conceivable functions to “center and scale” to these domains are sharp edged window functions. This is especially true when constructing electron optical filters: You make for example a 10 micron hole in a thin piece of metal, and electrons are either transmitted with unit amplitude and no phase shift where the hole is, or they are not transmitted at all. Partial transparency, or phase modulation, would require controlled aperture thicknesses at the atomic scale, and hence have not historically been a practical choice. The “darkfield perspective” on position/frequency localization is of course not limited to such “all or none” aperture functions, but they are a natural place to start because of their convenience and history of use in microscopy.

The natural path between direct image and Fourier transform, that this way of looking at hierarchies provides, is more than just theoretical. Figure 6 shows what happens when one forms an image of the wave field in an electron microscope *just above or below* the objective back focal plane of a periodic specimen (in this case sapphire) under plane parallel illumination. (The Fourier transform itself resides *in* the back focal plane.) As you can see, the decomposition of the previous figures can (it would seem) be found grinning back at us from the midst of the electron wavefield in our scope! Note that here the

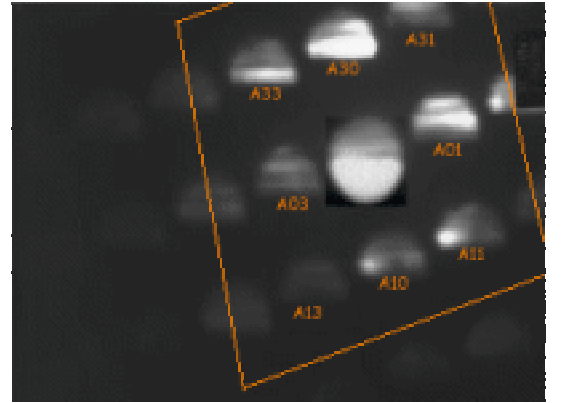


FIG. 6: Defocussed electron diffraction pattern of a crystal, showing that sinc-decompositions intermediate between direct and frequency space can be found in nature.

circular pattern of each inset maps the effective shape of the specimen region being illuminated. Here as in later examples, symmetries for the direct space source region, and the Fourier tiling, may be chosen independently (cf. Figs. 7).

Also note that the symmetry of the “tiling” is not chosen with apertures, but by the specimen itself. This suggests to me that the wavefield in the microscope may be more generally modeled as a kind of image/FT convolution (is Wigner-Ville transformation relevant here?). It masquerades as a Fourier-space tiling here, because this

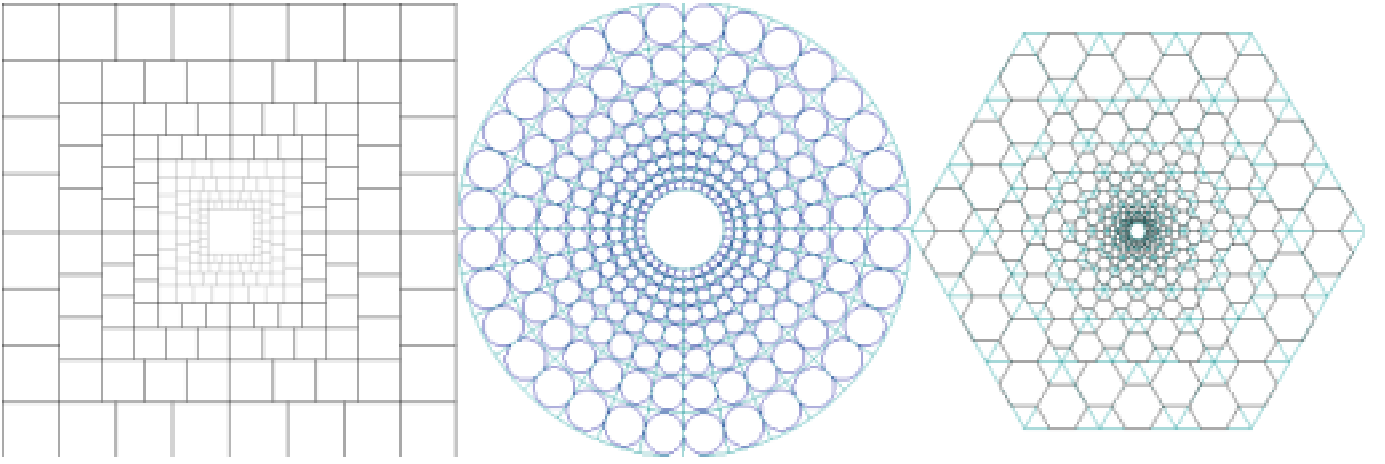


FIG. 7: Logarithmic Fourier window tilings with (a) four-fold symmetry in both the initial (direct space) image as well as in the Fourier windows used, (b) polar symmetry Fourier windows applied to an initial circular image source region, and (c) alternating equi-triangular Fourier windows applied to an initial hexagonal image source region.

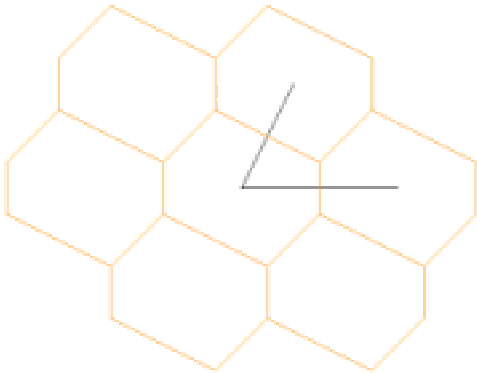


FIG. 8: Reciprocal space domains associated with a diffraction spot array from the 2D reciprocal lattice of an arbitrary crystal lattice, viewed in projection with small Bragg angles down a low-symmetry zone axis.

specimen’s “point-rich” 3D reciprocal lattice acts (via its intersection with the incident electron Ewald sphere) as a 2D reciprocal comb (i.e. as a periodic array of delta functions in frequency space).

The “microscopist’s perspective” also provides some clues to the types of more sophisticated Weyl-Heisenberg, Wigner-Ville and/or wavelet-like decompositions (e.g. Meyer-Coifman brushlets⁹) that might prove useful in helping microscopists make the most of their digital images (especially those that show atomic lattice resolution). In this latter case, the fact that the spacing between all atoms in solids is on the order of 0.2 nm means that precise information on both location and scale size may be desired with a very specific frequency range in

mind. The structures we search for (discrete arrays of equally spaced molecules) are also very specific. It turns out in this context, for example, that simple rules define a continuum of tilings between square and hexagonal, that have been optimized (as in Fig. 8) to offer maximum expression of the shape transforms associated with each spot in an arbitrary 2D lattice. Of course, this strategy is only useful if you know the periodicity and orientation of the lattice of interest. In the absence of this information, or in the presence of more than one crystal, the symmetry of the tiling scheme may be dictated by other considerations (or the lack thereof).

Also, specific periodicities and their harmonics is a specialized interest. If on the other hand adaptivity to a wide range of scale sizes takes precedence (especially relevant for images greater than a gigabyte in size), logarithmic tilings as in Fig 7, which extend the wavelet strategy of treating frequency as a scale parameter, may be of help. Many ridgelet tilings, for example, adopt this tact.

In Figure 7b, the dark circles represent (as do the discs in Figure 6) the shape in direct space of the region being analyzed, while the light blue patches in which they are centered represent the frequency domains from which these “darkfield image patches” draw power. Likewise for the dark hexagons in Figure 7c. One of the nice things about sharp window frequency space decompositions (like those commonly used for electron microscope darkfield imaging) is that digital algorithms exist today (some quite efficient) for tiling schemes like those of Figs 7-8.

V. DIGITAL DARKFIELD APPLICATION EXAMPLES

The examples here illustrate (i) the use of sinc-windowlet intensity maps to highlight the distribution of a selected periodicity in an image, (ii) the use of tiled

decompositions to search for patterns of periodicity distribution in space which might otherwise be “covered” by noise, and (iii) the use of sinc-windowlet phase maps to plot selected strain components associated with each of several lattice planes whose periodicities are projected into a single image. All begin with images taken using a 300kV Philips EM430ST transmission electron microscope (TEM) with point resolution near 0.2 nm.

A. Visual tracking of thin-film nucleation and growth

A look at Cu_2O electrochemically grown epitaxially onto the surface of a (100) silicon wafer by Jay Switzer (cf. Switzer et. al.¹³) at the University of Missouri in Rolla (UMR) illustrates the usefulness of sinc-windowlet analysis, both in identifying barely visible periodicities, and in using digital darkfield images to highlight periodicity distributions. The specimen was prepared in cross-section by cleaving along (110), followed by preparation of a 3 mm diameter “stack” for slicing, abrasion, dimpling, and Argon ion milling.

An excerpt of a larger high resolution TEM electron phase contrast (HREM) image, covering a region just to the left of the primary $\text{Cu}_2\text{O}/\text{Si}$ interface, is shown in Figure 9. The right side of this image shows parts of two octahedral Si pyramids with (111) faceted walls. The larger image shows that these pyramids jut upward from the (100) silicon surface, pointing in the direction of Cu_2O epitaxy. The left side of the image, by comparison, contains lattice fringes from the Cu_2O layer itself. Of particular interest is the question of growth nucleation. These two phases have a large lattice misfit, and the Cu_2O itself shows evidence of low angle grain boundaries in the epitaxy, suggesting that a mechanism for accommodating misfit through disorder is at work.

Unfortunately, the presence of amorphous material (e.g. silicon oxide) as well as a 50 nm layer on top and bottom of the specimen due to ion milling are conspiring to make the lattice fringes fairly difficult to see or track throughout the image. To get a closer look, therefore, we calculated a 16×16 darkfield decomposition of this image (Fig 10 top) along with a regular Fourier power spectrum (Fig 10 bottom). From the power spectrum, of course, interspot spacings and angles allows us to compare fringe spacings and angles rather quantitatively. The darkfield decomposition, by comparison, allows us to tell where in the image the “power” or variance, in a given patch of frequency space, is concentrated.

The eight blue circles in the top of Figure 10 highlight regions of frequency space whose variations are concentrated in the right half of the image, i.e. in the silicon pyramids. One can tell this because in these Fourier windows the right half of the patch is noticeably brighter than the left half. The four orange circles highlight regions of frequency space whose variations are concentrated in the left half of the image, i.e. in the Cu_2O lattice.

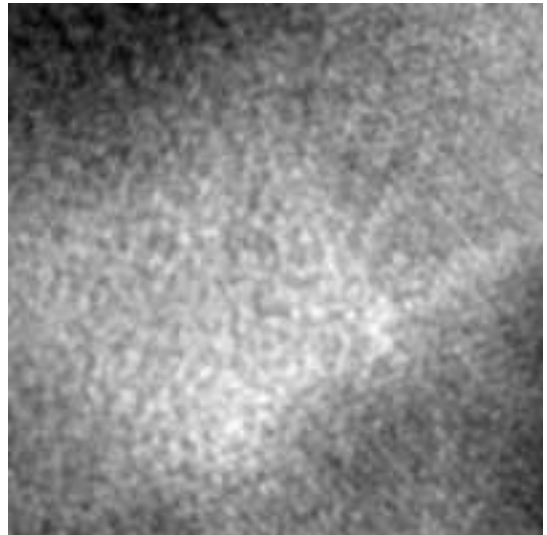


FIG. 9: 512×512 excerpt from 15000×15000 image of a $\text{Cu}_2\text{O}/\text{Si}$ interface (running from around 7 o'clock to 1 o'clock just to the right of the region shown in the image) in cross-section. This excerpt shows parts of two pyramidal Si mounds on the right, and some fringes on the left from a cuprous oxide column that likely nucleated between them (followed by columnar growth orthogonal to the substrate silicon wafer, viewed here down (110)).

This is confirmed by a look at these corresponding regions of frequency space in the power spectrum in Fig 10 bottom. Measurement of the spacings and angles confirms that the blue-labeled spots correspond to Si spacings viewed down the $\langle 011 \rangle$ zone, with the (400) reflection perpendicular to the $\text{Cu}_2\text{O}/\text{Si}$ interface in projection. The orange spots correspond to a Cu_2O $\langle 011 \rangle$ zone, with the (200) reflection about 4 degrees clockwise from the interface normal. The Cu_2O lattice is also twisted between 0.5 and 1 degree “up” about the beam normal, because the (020) spot is not visible while the (040) spot is there if extremely weak. In fact, this 1.07 Angstrom (040) spot would not have been noticed or confirmed without the evidence for spatial correlation with the Cu_2O side of the image in the corresponding frequency window of the darkfield decomposition at top. Given this spot, we are able to determine the orientation of the Cu_2O column to better than a degree *in any direction*. Future work with even more careful filtering might allow inspection of the epitaxy between Cu_2O and Si, for evidence of dislocations at points of $\text{Cu}_2\text{O}/\text{Si}$ contact.

Work on the larger image from which this was drawn confirmed that the “4 degree off” column of Cu_2O indeed extends up to the top of the layer. But where near the interface does it begin, and how can we map the location of this particular crystal “from a distance”, i.e. in a figure sufficiently reduced in size that the whole film can be seen even though the lattice fringes themselves are then too small to resolve?

Figure 11 illustrates with a composite which began

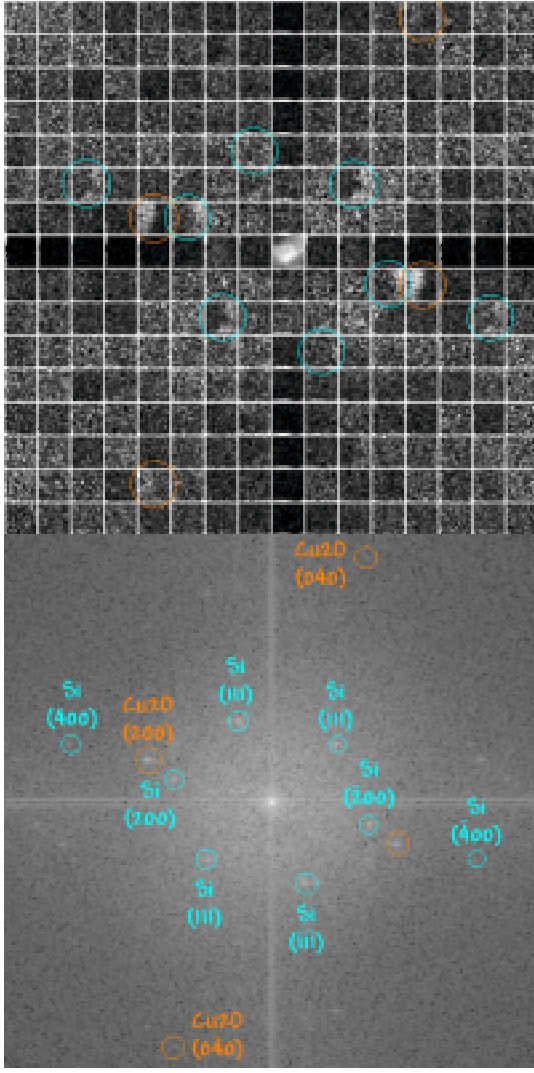


FIG. 10: Maps calculated from Fig 9: On top is a 16×16 dark-field decomposition showing spatial correlations (left Cu_2O , right Si) within selected frequency windows. In the center is the reduced-resolution bright field. At bottom is a power spectrum for measuring periodicity spacings and angles.

with the reduced image of a larger part of the original negative in green. Overlaid in blue find a darkfield image created by adding intensities from Fourier windows which pass primarily periodicities of the silicon substrate. As you can see, the silicon pyramids with thin silicon at the top show up especially well. Lastly, in red (which combines with green to form a coppery orange) find a dark-field image created by adding intensities from Fourier windows which pass primarily periodicities of the “4 degree off” Cu_2O column. The image confirms the columnar growth pattern, and moreover offers some reason to suggest that the epitaxy probably takes place near the peak of the Si pyramids, rather than at their base. This would offer opportunities for the Cu_2O lattice to attach near the tip of this pyramid (or along it’s side), taking advantage of the high local curvature to select a minor tilt

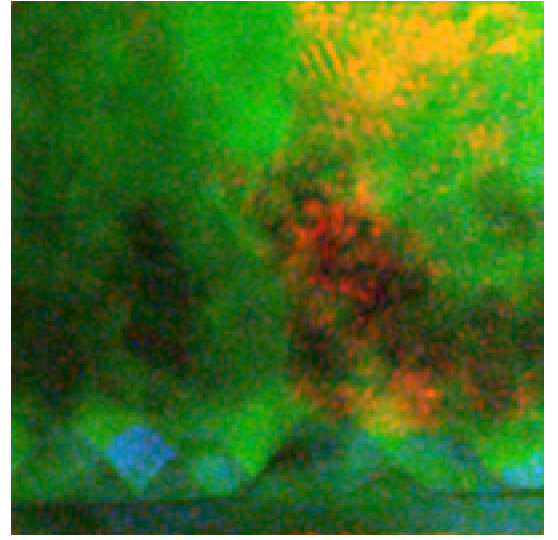


FIG. 11: Color overlay from a larger portion of the HREM image discussed in Figs 9 - 10, rotated so that the $\text{Cu}_2\text{O}/\text{Si}$ interface is horizontal. The original HREM image is in green. A darkfield version of the same image, formed using only intensity from Si lattice periodicities, is in blue. In red, find a darkfield image formed using only intensity from the particular 4-degree rotated Cu_2O lattice discovered in Figures 9 through 10. (Our proposed cover image is a color composite from an even larger portion of the original negative.)

to help accomodate the lattice misfit. In this way, digital darkfield imaging might allow one to visualize processes on scales much larger than the periodicities being effected. We expect that this use will become more important as even larger images, with atom-scale metric information in them, become available.

B. Single image recognition of icosahedral twins

In this section, we treat a more complex problem, namely the study of twinned nanoparticles. Although the stable configuration for large crystals of a given metal at room temperature is often well known, when metal particles are smaller than 10 nm in size, surface to volume ratios are much larger and modes of crystal growth not energetically favorable (or even impossible) *in bulk* are quite common. The classic example of this is icosahedral growth, perhaps facilitated by the low surface area of triangular fcc (111) facets in an icosahedral array¹⁴. Surface considerations begin to pale as such particles acquire volume, and what began as an icosahedral assemblage grows into a set of 20 paired and nearly tetrahedral fcc twins (one twin for each icosahedral face).

The HREM image of a particle of icosahedrally twinned fcc Palladium, formed by solid state reduction in polyvinyl chloride, microtomed, and viewed down the 5-fold axis, is shown in the top of Fig 12. Although symmetry in the structure may not be apparent from the

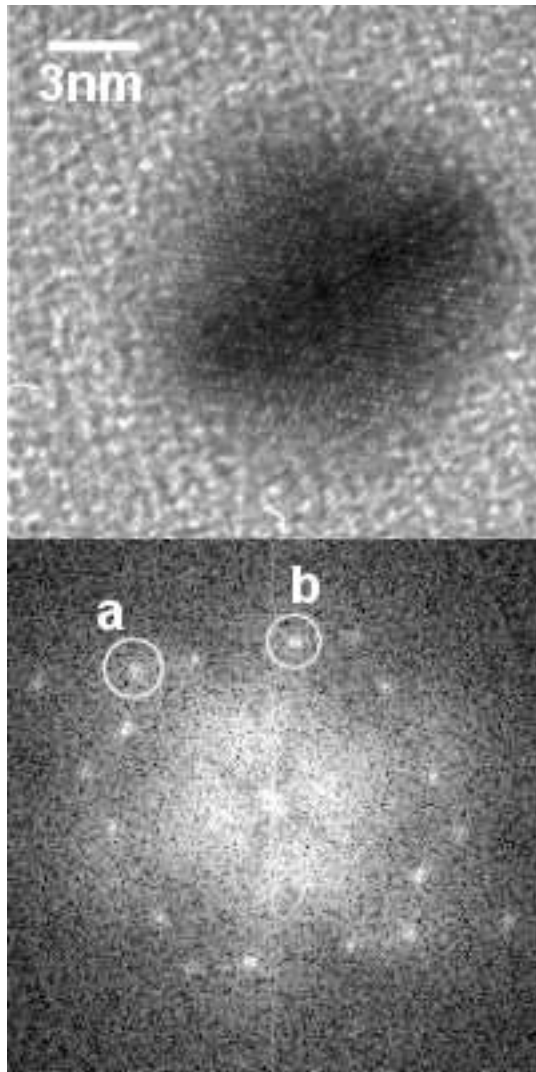


FIG. 12: Top: HREM image of a Pd icosahedral twin formed by solid state reduction in polyvinyl chloride; Bottom: Power spectrum of the above image showing elements of 10-fold symmetry.

image, the central region of the power spectrum (bottom Fig 12) reveals a clear 10-fold, or pseudo 10-fold, symmetry. The inner-most spacings are consistent with 0.22 nm fcc Pd (111), the intermediate spots are consistent Pd (200) spacings of around 0.19 nm, and the occasional outer spot is consistent with the 0.14 nm Pd (220). Of course, fcc crystals (in fact, all translationally periodic lattices in 3D) have no 5 or 10 fold orientations.

Digital darkfield images, formed using the periodicities surrounding a single spot in the Fourier transform, provide a striking answer to the question: What's going on? For example, the top of Figure 13 was obtained by windowing the region of frequency space marked (a) in Fig 12. As a result, the set of Pd (220) planes running from lower left to upper right in one pair of twins in the particle "lights up". Electron microscopists might see this as "forming the image with electron Bragg scattered into

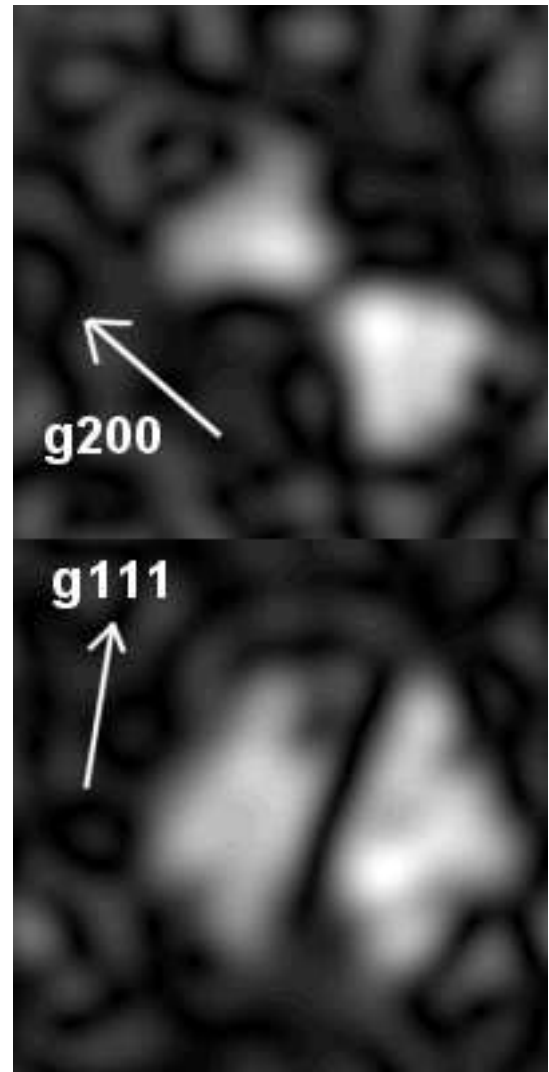


FIG. 13: Top: Digital darkfield image using a Pd (200) reflection, showing the predicted "bowtie" twin pair. Bottom: Digital darkfield image using a Pd (111) reflection, showing the predicted "butterfly" twin quartet.

the Fourier aperture by those two pyramidal crystals", although of course no diffraction is taking place in this analysis at all. Similarly, each set of (111) spacings in an ideal fcc icosahedral twin is shared by four of these crystals. When viewed down a 5-fold direction, such (111) planes "light up" a butterfly pattern like that in the bottom of Fig 13. This image was obtained by windowing only those frequencies surround the spot marked (b) in the power spectrum of Fig 12.

The images in Figure 13 will be familiar to materials electron microscopists as darkfield images with "the g-vector of the active reflection" drawn in (cf. Hirsch et al.²). The small size of this twin particle, and the crowded nature of its reciprocal lattice, would make this experiment difficult to perform optically, but the strategy is familiar. Consider now, however, the problem of identifying icosahedral twinning in a randomly-oriented nano-

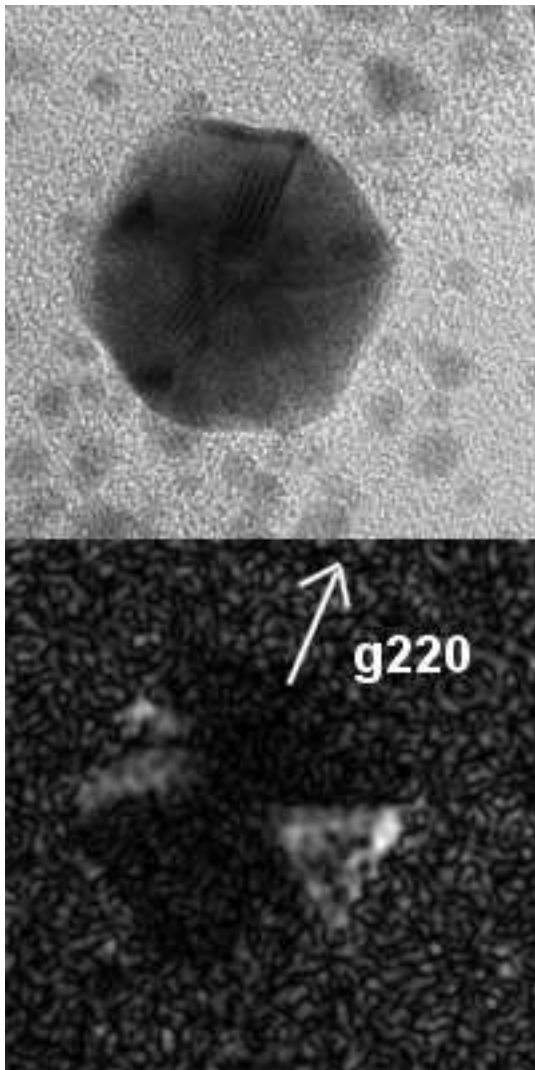


FIG. 14: Top: 1024×1024 HREM image of a “randomly oriented” and twinned AuPd cluster. Bottom: Darkfield 0.14 nm (220) butterfly, discovered in a 32×32 darkfield search of the image above for i-twin “bowties” and “butterflies”.

particle. Individual 2-second exposure HREM images can include lattice information on hundreds of nanoparticles, but can harmonic analysis allow one to detect icosahedral twinning after the fact?

The top of Figure 14 is a HREM image of a twinned AuPd cluster provided by Massimo Bertino at UMR (cf. Doudna et al.¹⁵). The specimen is on a carbon support film. Its power spectrum (not shown) contains spot spacings characteristic of AuPd, but with apparently random orientation thus offering no evidence of symmetry in the specimen. However, a 32×32 tiled darkfield decomposition of this 1024×1024 image (analogous to that in Fig 9) contained at least one bowtie/butterfly structure like those in Fig 13. The clearest of these (a bowtie) is shown in the bottom of 14, where the g-vector orientation associated therewith is the one expected for icosahedral twinning as well.

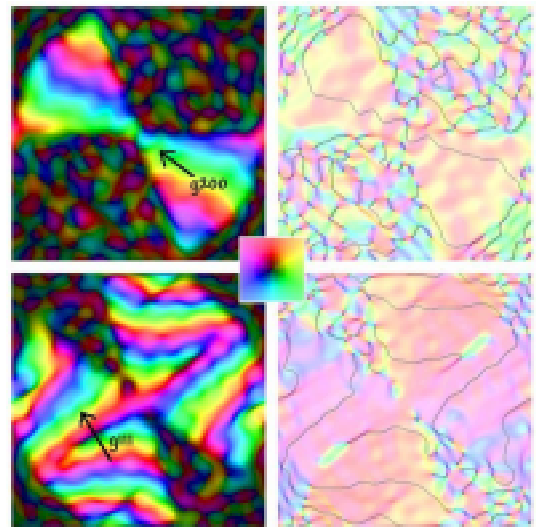


FIG. 15: Complex color phase (left) and strain (right) maps for bowties (top) and butterflies (bottom) from a simulated icosahedral twin.

The numerical calculation of 1023 tiled darkfield images (and one brightfield image) which made this discovery possible was done in essentially the time required for a single forward and reverse 1024×1024 fast Fourier transform. We are currently doing calculations to determine the fraction of such icosahedral twins likely to be indentifiable from a single, randomly oriented, image. Back of the envelope considerations, as well as the data shown here, suggest that the method has a significant chance of success.

Even if one could optically detect diffraction spots from this particle, and set up darkfields for each of the diffraction spots in the pattern, the time involved would be prohibitive. Since this calculation can also be done as well for the hundred or more other particles represented in the quarter gigabyte of information from a single 2-second HREM image exposure, this strategy of tiled darkfield decomposition shows potential for offering both extended sensitivity, and major savings of time, in the study of nanoparticle assemblages.

C. Mapping lattice strain around 2D and 3D defects

Thanks in part to the fact that transmission electron microscopes record data “in parallel” as distinct from “in series” (as is the case e.g. for scanning probe microscopes), HREM images under optimum conditions can map the projected potential in a thin specimen with reasonably high metric fidelity. Hence distortions measured in HREM lattice images can provide rather precise information on lattice structure in a specimen¹⁶. In this section, we discuss how the Fourier phase of darkfield images can therefore provide details about specimen struc-

ture e.g. on percent-level lattice strain components as projected into the beam direction. The extent to which the process of thinning the specimen, as well as strain relaxation at the surface after thinning, modifies the state of the observed specimen from its state e.g. prior to thinning^{17,18} will not be discussed. We will also here ignore effects, like local specimen thickness or instrument defocus, which might in themselves result in shifts in the image Fourier phase from point to point. Thus we will content ourselves with the mathematician’s task of localizing periodicity in the images, and leave to others the task of inferring what those periodicities might mean for the specimen itself.

Let’s begin with a theoretical example. The left half of Figure 15 contains maps for bowtie (top) and butterfly (bottom) darkfield images from a modeled icosahedral twin particle, rendered in “logarithmic complex color”. This means that brightness in the image is logarithmically related to the windowlet amplitude, while the phase is rendered using a cyclic hue-related color table (see inset) in which red (for example) might correspond to positive real and cyan negative real. A similar color scheme was earlier used in Figure 5 to represent complex numbers.

Fourier phase shifts in a periodicity amount to local displacements. For example, in one spatial dimension an interval with sinusoidal oscillations would be shifted by $\pi/2$ from an adjacent interval with cosine-usoidal variation. If, as in the cases discussed here the darkfield image is dominated by power in a single lattice periodicity, then the 2D gradient in that phase describes the 2D strain one-form, the components of which are simply change in lattice position per unit traverse in a given direction. The log magnitude of this strain one-form is inversely proportional to brightness in the images on the right side of Fig 15, while the direction of that strain is denoted by hue (as per the key in the center of the figure).

Note that the strain seems random in areas with windowlet amplitudes down in the noise (i.e. away from the object with strong periodicities in this frequency window). In these areas, strain fluctuations occur on a scale size inversely proportional to the bandwidth of the darkfield window. In regions of high amplitude the strain by comparison seems relatively uniform, i.e. on the bow-tie and butterfly patterns themselves. However, note the blue bands centered on the butterfly wings in the lower right quadrant of Fig 15. This is the strain associated with the tensional (outer) half of the partly compressional, partly tensional (111) interface between adjacent “bowties” (paired crystal 3-sided pyramids). It arises in essence because the fcc geometry is asking for a 70.5° ($\leftarrow \arccos[1/3]$) angle between similar sections, while the icosahedral symmetry demands 72° ($\leftarrow 2\pi/5$). Note that the direction (hence hue) of the interface strain shows it to be directed perpendicular to the interface between crystals (as well as the planes associated with the windowed periodicity). The short range of the strain is a result of the detailed icosahedral model used: No “re-

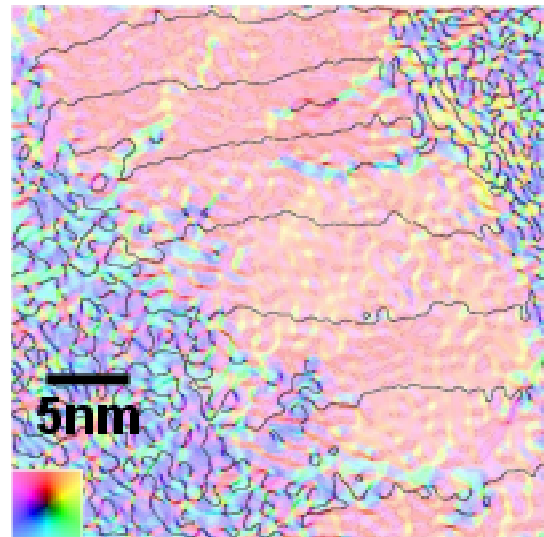


FIG. 16: Log reciprocal-amplitude directional complex-color strain image for the GaN (003) “growth direction” periodicity which runs perpendicular to the GaN/sapphire interface (upper left corner).

laxation length” was included in the calculation.

This theoretical example in hand, consider now an experimental example. Figure 16 shows the strain image obtained as described above, for the (003) growth direction periodicity at the bottom of a “GaN/InGaN on sapphire” molecular beam epitaxy quantum well specimen (cf. Nistor et al.¹⁹) grown and provided by Dan Leopold. Both the sapphire in the upper right corner, and the ion-mill damaged thin area to the lower left, are noise dominated in the chosen frequency window. The rest of the image, however, is quite uniform in color save for the dark near-horizontal lines across the specimen. These represent artificial “branch cuts” in the phase values which gave rise (unnecessarily) to singularities during the gradient calculation. The magnitude of the strain in this GaN (003) layer is at the percent level (i.e. measurable in picometers for each 0.27 nm period of traverse in the image), and the actual value of lattice strain in the growth direction is probably less given that a shift in the reference periodicity would likely reduce the coloration even further.

The same starting image can also be used to examine strain components in other periodicities. For example, strains in the GaN (110) direction (parallel to the interface in this projection) are comparable but also a bit noisier, because the microscope transfer function delivers the 0.17 nm periodicity less efficiently than the 0.27 nm periodicity in the growth direction.

The strategy described here, sensitive to “sub-pixel displacements” like the one recommended by Seitz et al.¹⁶, thus arises naturally in the context of a comprehensive darkfield analysis. Problems with overlapping periodicities, noise, and microscope instability nonetheless continue to limit our inferences. Hence these applications

also provide a context for new harmonic analysis strategies that will “divide up reciprocal space” in ways which are more informed, to the structures being examined, than the “sharp-edged window method” applied here. We know in advance that none of the features sought in microscope images are likely to have sharp-edged window footprints in frequency space.

VI. CONCLUSIONS AND CHALLENGES

This paper is designed primarily for two audiences. For those involved in mathematical harmonic analysis, it is designed to illustrate a few applications of interest in microscopy on the nanoscale, for which optical sinc-windowlet analyses are in a relatively advanced stage, but for which digital solutions are in their infancy. It is also designed to highlight the windowlet interpretation of intermediate direct and frequency space decompositions. In this interpretation, *all* “energy conserving” decompositions are in a physical sense dividing up the frequency space “wavefield” of the original dataset, thus providing the analyst with “darkfield images” chosen to highlight the image patterns of interest. For those involved in microscopy, the paper is designed to illustrate digital versions of familiar optical darkfield analysis techniques which, as in electron optic applications in principle, use “sharp-edged” apertures.

Challenges here posed for harmonic analysis include (i) the application of existing frequency-selective decompositions (e.g. ridgelets and brushlets) to the study of nanocrystals as well as nanocrystal edges and other defects, (ii) the possible use of radon, edgelet, and other decompositions for the recognition of single-walled structures (e.g. graphene sheets) in a samples ranging from carbon composites to dust formed in the outer atmosphere of red giants, and (iii) future development of decompositions optimized for taking advantage of phase and amplitude information in HREM images to recognize bump (single atom) lattices buried in noise, and perhaps even order in paracrystalline²⁰ or even polymerized solids. This opportunity, to drive discovery between active but largely independent communities of investigators, will hopefully benefit other application areas as well.

ACKNOWLEDGMENTS

REFERENCES

* pfraundorf@umsl.edu

- [1] P. Goupillaud, A. Grossmann, and J. Morlet, *Geophysical Research* **23**, 85 (1984).
- [2] P. Hirsch, A. Howie, R. B. Nicholson, D. W. Pashley, and M. J. Whelan, *Electron Microscopy of Thin Crystals* (Robert E. Krieger Publishing Company, Huntington, New York, 1977), pp. 310–311.
- [3] I. Daubechies, *IEEE Trans. Inf. Theor.* **36**(5), 961 (1990).
- [4] C. K. Chui, *Bull. Amer. Math. Soc. (N.S.)* **33**(1), 131 (1996).
- [5] B. G. Boone, *Signal Processing in Optics* (Oxford University Press, New York, 1998).
- [6] A. G. Flesia, H. Hel-Or, A. Averbuch, E. J. Candes, R. R. Coifman, and D. L. Donoho, *Digital implementation of ridgelet packets* (Academic Press, New York, 2001).
- [7] M. Vetterli and J. Kovacevic, *Wavelets and Subband Coding* (Prentice Hall, 1995).
- [8] R. Calderbank, I. Daubechies, W. Sweldens, and B.-L. Yeo, *Applied and Computational Harmonic Analysis (ACHA)* **5**(3), 332 (1998), URL citeseer.nj.nec.com/article/calderbank96wavelet.html.
- [9] F. G. Meyer and R. R. Coifman, *Applied and Computational Harmonic Analysis* **4**, 147 (1997).
- [10] P. Fraundorf and K. Pollack, *Ultramicroscopy* **37**, 72 (1991).
- [11] L. D. Marks, *Ultramicroscopy* **62**, 43 (1996).
- [12] P. Fraundorf, *Phys. Rev. Lett.* **64**(9), 1031 (1990).
- [13] J. A. Switzer, M. G. Shumsky, and E. W. Bohannon, *Science* **284**(5412), 293 (1999).
- [14] H. Hofmeister, *Cryst. Res. Technol.* **33**(1), 3 (1998).
- [15] C. A. Doudna, J. F. Hund, and M. F. Bertino, *Intern. J. Mod. Phys. B* **15**(24-25), 3302 (2001).
- [16] H. Seitz, K. Ahlborn, M. Seibt, and W. Schroter, *J. Microscopy* **190**, 184 (1998).
- [17] M. M. J. Treacy and J. M. Gibson, *J. Vac. Sci. Technol. B* **4**, 1458 (1986).
- [18] J. M. Gibson and M. L. McDonald, *Mat. Res. Soc. Proc.* **82**, 109 (1987).
- [19] L. Nistor, H. Bender, A. Vantomme, M. F. Wu, J. V. Landuyt, K. P. O'Donnell, R. Martin, K. Jacobs, and I. Moerman, *Appl. Phys. Lett.* **77**, 77 (2000).
- [20] J. M. Gibson and M. M. J. Treacy, *J. Non-Cryst. Solids* **231**, 99 (1998).