



Overview:

SAMBA is a utility for mapping your UNIX shell account to any of the Windows machines in the labs and classrooms on campus. The following applies:

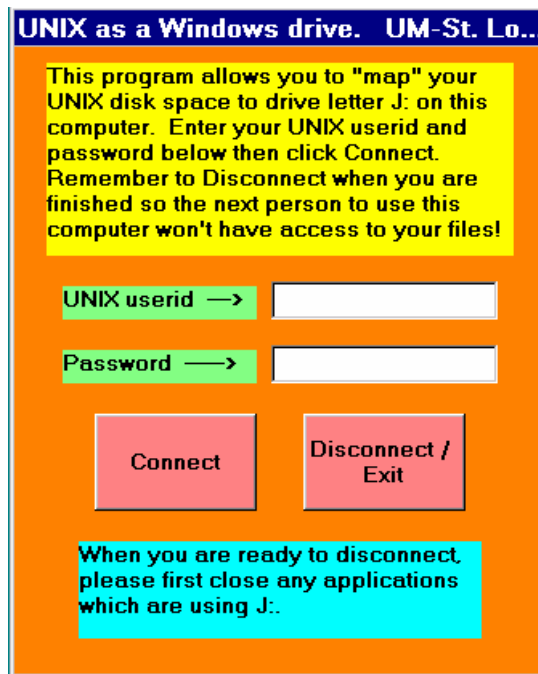
- To use this utility, you must have a UNIX SHELL account. If you do not have one, fill out the online form at: <http://www.umsl.edu/technology/unix/index.html>
- The default quota for a SHELL ('virtual drive') account is 100 MB.
- If you have problems logging in, ask one of the lab consultants, visit the Technology Support Center in 211 Lucas Hall or call them at 314-516-6034.

Usages:

- You can create, edit, and save documents directly to your account space – no more floppy disks!
- Drag and drop files from Windows Explorer directly into your UNIX account
- **SAVE** your work often in case the computer freezes or crashes!

To Login:

1. **Start** → **SAMBA**
2. Enter your UNIX user id and password (for new students this will be your GatewayID/SSO ID).
Your default Password is made of the last 2 digits of the year you were born in, the date of birth and last 4 digits of your social security number, for example John Smith's password, who is born in 1980 on the 20th of June with 123-45-6789 as his social security number, would be 80206789.
3. Click **Connect**



4. Once you login a new window will open showing you the contents of your account space.

Ensure the Security of your Account: LOG OUT

- Close all applications that are using the J:/ drive, then click **Disconnect**

If you do not log out, then anyone using the computer after you will have complete access to your files!