



TELNET

What is Telnet?

Telnet allows you to log on to a remote computer system like Admiral or Jinx from your local machine, as if you were directly connected to it. It creates a terminal emulation that lets you access your UNIX account or access other sites such as The UM-St. Louis online Library Catalog.

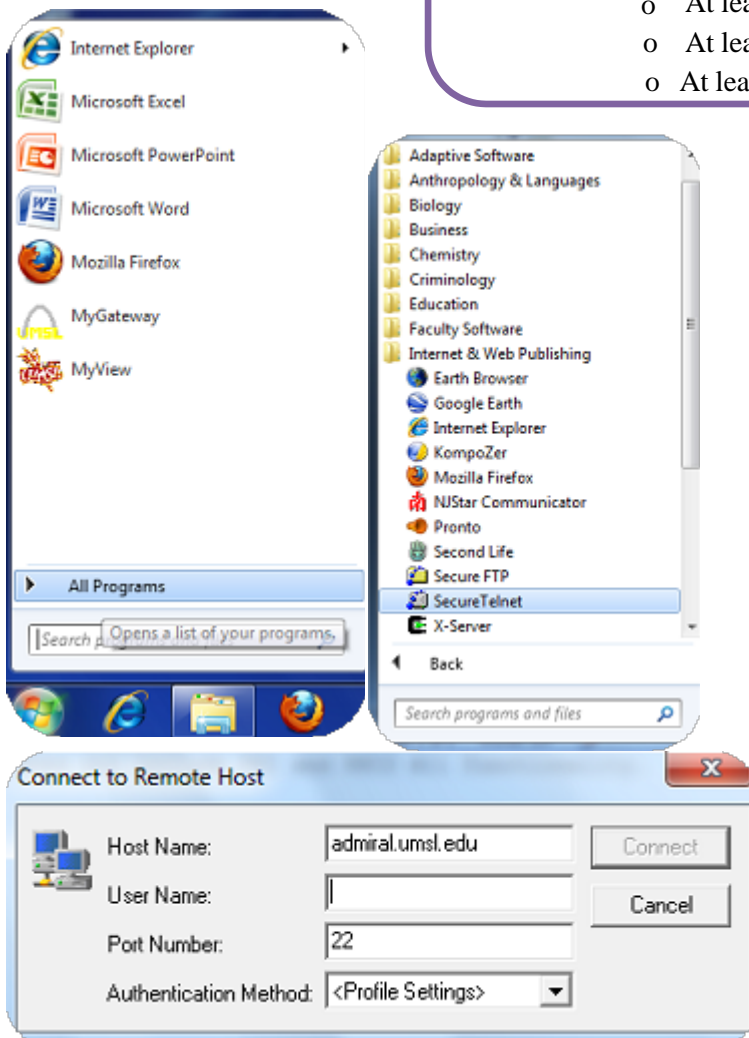
Login

You will be prompted for your login and password. Your login is your SSO ID and password.

Passwords

Strong Password:

- Must not contain SSO ID
- At least eight characters (a-z)
- At least three of the four:
 - At least one lowercase character (a-z)
 - At least one uppercase character (A-Z)
 - At least one digit (0-9)
 - At least one symbol (? . , ! _ - ~ \$ % + =)



1. Click on **Start**, go to **All Programs**, then **Internet & Web Publishing** and then choose **Secure Telnet**.

2. Click on the Telnet Icon and a blank window will appear. Click on **Quick Connect** or **Press Enter** to open a connection.

3. At **Connect to Remote Host** specify the **host** name or IP address of the remote system you want to connect to. For example, type in **admiral.umsl.edu** to access the server admiral. Then click **OK/Connect**. Note: the default settings for IP Port is 22.

4. You will be prompted for user id and password. You are now connected to your specified server.