

# UMSL

Missouri Institute of  
Mental Health (MIMH)

*A Center for Policy, Research  
and Training*



The Missouri Institute of Mental Health (MIMH) is located in the historic Dome Building (cover photo) on the grounds of the St. Louis Psychiatric Rehabilitation Center (SLPRC), Missouri Department of Mental Health.

5400 Arsenal Street • St. Louis, Missouri 63139 • 314-877-6401 • [www.MIMH.edu](http://www.MIMH.edu)



**Missouri Institute of Mental Health**  
A Center for Policy, Research, and Training

Office of the Director  
5400 Arsenal Street  
St. Louis, MO 63139-1403  
Telephone: 314-877-6401  
Fax: 314-877-6405  
[www.mimh.edu](http://www.mimh.edu)

Welcome to the Missouri Institute of Mental Health (MIMH).

Founded to support the research needs of the Missouri Department of Mental Health, the Institute is approaching its 50-year anniversary. Over this half of a century, the Institute has evolved from training psychiatrists for Missouri's public mental health institutions, to creating large client databases and computer systems, to developing grants and contracts funding research, evaluation, training, and providing policy-relevant knowledge on a variety of populations in the behavioral health arena.

In September 2010, the Institute moved under the administration of the University of Missouri-St. Louis (UMSL) campus from the University of Missouri-Columbia, School of Medicine. The Institute's home at UMSL is the Office of Research Administration where it is part of a growing and dynamic group of faculty and staff focusing the university's efforts on developing a nationally known and respected research portfolio.

Since its inception in 1962, MIMH has had a long and productive relationship with the Missouri Department of Mental Health. This symbiotic relationship has resulted in a tremendous impact in research knowledge, trained staff, but most importantly, better care for those Missourians suffering from behavioral health disorders. The Institute continues to be invested in supporting Missouri's mental health community in their efforts to bring new initiatives to the state. Faculty and staff at the Institute have gained a national reputation for developing, implementing, researching and disseminating knowledge gained through local, state, and federal grants and contracts. In fact, many community-based behavioral health agencies come to the Institute as their first choice for developing new initiatives.

The Institute is comprised of talented faculty and staff members who bring a wealth of knowledge and experience in a variety of areas of behavioral health. The enclosed information provides brief descriptions of our current initiatives and the myriad expertise of our research faculty and staff. Please look over this sample of MIMH projects and personnel and do not hesitate to contact me or any faculty or staff whose expertise matches an interest or need of yours. Faculty and staff are eager to collaborate with members of community-based agencies, faculty at other universities, and members of local, state and federal governmental organizations. We welcome the opportunity to explore ways in which we can work together to serve the mental health community of Missouri. Please contact us to learn how you could be part of the next 50 years at MIMH!

Sincerely,

A handwritten signature in cursive script that reads 'Joseph Parks MO'.

Joseph Parks, M.D.  
Distinguished Research Professor of Science  
Director



## Table of Contents

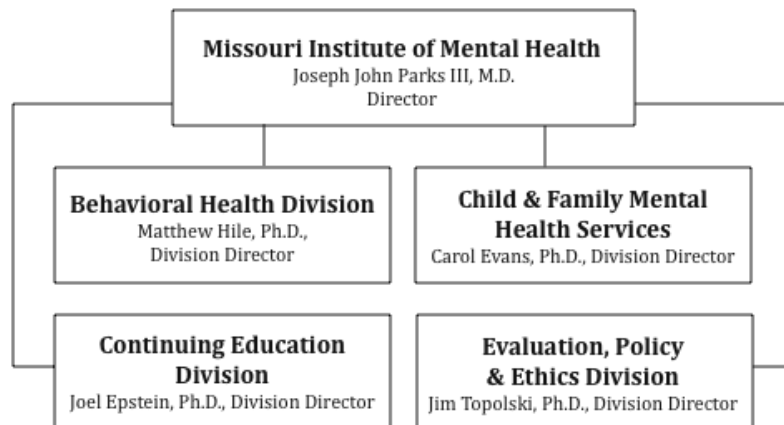
<b>About the Institute</b> .....	1
<b>Behavioral Health Division</b> .....	2
<b>Child &amp; Family Mental Health Services</b> .....	8
<b>Continuing Education</b> .....	13
<b>Evaluation, Policy &amp; Ethics</b> .....	16
<b>MIMH Faculty &amp; Research Staff, Expertise &amp; Interests</b> .....	20
<b>FY2011 Top 10 Grants &amp; Contracts</b> .....	34
<b>MIMH Funding, FY1992-FY2011</b> .....	35
<b>Organizational Charts</b> .....	36-39
MIMH.....	36
Behavioral Health Division .....	37
Child & Family Mental Health Services .....	38
Continuing Education .....	38
Evaluation, Policy & Ethics .....	39



## About the Institute

**The Missouri Institute of Mental Health (MIMH) is dedicated to providing research, evaluation, policy and training expertise to the Missouri Department of Mental Health and other state agencies, service-provider agencies, and other organizations and individuals seeking information related to mental health and related policy areas.**

Specific areas of interests include substance abuse prevention and treatment, mental health promotion and treatment, mental health and substance abuse recovery, suicide prevention, violence prevention, behavioral health, behavioral informatics, epidemiology, and health literacy. Areas of expertise include quantitative and qualitative research methods, information technology, web site design and applications, process and outcome evaluation, and program and curriculum development.





# Behavioral Health Division (BHD)

---

**The Behavioral Health Division, formerly known as the Mental Health Systems Research Unit, focuses on developing and demonstrating innovative programs using advanced technologies to promote behavioral health systems and support consumers across the life span.**

## Overview

The Behavioral Health Division's diverse faculty engages in research and evaluation of many behavioral health systems and issues. Our recent focus has been on substance use and mental health issues. For example, we helped develop web-based services to reduce the risk of Fetal Alcohol Spectrum Disorders and evaluated the changes in alcohol use intentions of 11- to 14-year-olds. We are evaluating and supporting a new long-term systems approach to preserving or reuniting families that are at risk of losing their children due to drug related abuse and neglect. Another evaluation is of a residential project that provides enhanced developmental services to addicted pregnant and postpartum women and their children.

One active and unique line of research is with mental health consumers. In it, researchers are developing tools along with skilled, community based users to administer these tools facilitating continuous quality improvements in consumer-operated programs. Another consumer initiative is working to build recovery based communities in Missouri to support mental health consumer well-being and community integration. Focused more broadly, BHD researchers have developed

and implemented innovative programs with the African American faith community to teach young women about substance abuse and HIV/AIDS within an ongoing mentoring relationship.

Since its inception, the Division has been known for its development and use of advanced information systems to support behavioral health service delivery. Multiple projects use custom information systems, and our ability to do long-term evaluation follow-up is supported by an innovative web-based tracking system. For example, in medical settings across the state, behavioral health coaches are using specially developed software and tablet computers to screen more than 80,000 Missourians for substance use risk behaviors and to provide appropriate interventions for those found to be at risk.

The Behavioral Health Division's work supports a diverse and powerful set of programs focused on helping Missouri's citizens live healthier lives.

## Initiatives

### **2<sup>nd</sup> Life Treatment Services for Adolescents**

This project provides substance abuse treatment services for adolescents following discharge from residential substance abuse treatment, using the web-based virtual world of Second Life. MIMH is evaluating the participants' experience and satisfaction with services provided in Second Life by coordinating the selection of outcome and process evaluation tools based on program objectives and assisting in the selection/development of evaluation measures specifically for Second Life program clients. MIMH is also conducting outcome data analysis and providing quarterly evaluation reports focusing on changes among participants in targeted problem behaviors at home, in school, and in the community, as well as reduction in substance use, at program discharge compared to intake and 3- and 6-months post discharge. Funded by the Missouri Foundation for Health/Preferred Behavioral Health.

### **Circle of Hope**

This project is aimed at increasing the well-being and permanency of children affected by methamphetamine or other substance use. Services are targeted specifically to enhance the safety of children who are in risk of out-of-home placement as the result of parental substance use. Support focuses on the clinical/case management of families and the development of the regional partnerships to increase the quality of, and services to families. This project has an experimental design with random assignment, and will serve 100 families in the Springfield Missouri area. The objectives of the program are to enhance service infrastructure through collaborations coordinated by the Missouri Alliance of Drug Endangered Children (MODEC), and to provide intensive in-home services for at-risk

families due to substance use. Funded by the Administration for Children and Families (ACF).

### **Consumer Operated Service Program (COSP) Quality Improvement Initiative**

The Missouri Department of Mental Health (DMH), as part of the MH Transformation grant, has contracted with Dr. Campbell for the past four years to convert the state-funded consumer-operated service programs into evidence-based practices by implementing the Fidelity Assessment Common Ingredients Tool (FACIT) developed by the COSP Multisite Research Initiative as a continuous quality improvement tool, including field-testing the FACIT and reporting the results. In addition, a professional association was organized among the 10 state-funded drop-in centers and warmlines to share information, and a 10-member peer evaluation team was trained to conduct the FACIT on an annual basis. Funded by the Missouri Department of Mental Health.

### **Depression and Bipolar Alliance – Heartland Consumer Network**

MIMH is conducting an evaluation of a statewide networking grant for three years to build recovery based communities in Missouri to support mental health consumer well-being and community integration. Dr. Campbell has developed an assessment tool to determine the nature and level of community well-being structures, beliefs and practices, and has trained facilitators to administer and analyze the results for education and advocacy activities. Results of this networking grant are reported to the federal government on a quarterly basis using a national tracking system. Funded by the Substance Abuse and Mental Health Services Administration (SAMHSA).

### **Diligent Recruitment**

Diligent Recruitment is an innovative adoption recruitment program that will improve permanency outcomes for children in custody in St. Louis and the surrounding counties. Diligent Recruitment is an intensive, 12-20 week, individualized recruitment effort with strategies that include preparing the child for permanency; conducting diligent searches to reconnect them with family; and achieving permanency through general, targeted and/or child-specific recruitment and wraparound services. This program will serve 150 youth during the grant, ensuring a system of supportive adults for at least 90% of youth, and achieving permanency through adoption or guardianship for at least 70% of youth. Services are offered for hard to place youth in the St. Louis area, ages 10-18, who have been in the child welfare system for 15 months or more. This project has an experimental design with random assignment. Funded by the Administration for Children and Families (ACF)

### **Educating Students, Educating the Community: An Evidence-based Program to Reduce Alcohol Abuse in Missouri's Fox C-6 School District**

The primary goal of this project is to evaluate the effectiveness of an evidence-based substance abuse prevention curriculum, presented to 10th grade students in Health Education classes in order to reduce binge drinking and approval of alcohol

use. A contract extension was developed with the school district following the end of the grant period so that analyses of data combined across all grant years (N=954 high school students) could be completed. An additional report for the school district, as well as manuscripts for publication, will be prepared based on these data. Funded by the U.S. Department of Education.

### **The Impact of Social Goal Priming on Adolescents' Implicit Alcohol Cognitions**

The goal of this study is to test the impact of priming a social interaction versus a task performance goal on positivity of implicit attitudes toward alcohol (i.e., automatic associations between alcohol and positive or negative words) among 200 adolescents aged 12 to 14 using an experimental design with random assignment to priming condition (goal or task). We expect that youth primed with a social interaction goal will display greater implicit positivity toward alcohol than youth in the task-prime condition. Further, we predict that positivity of explicit, self-reported alcohol expectancies will be associated with greater intentions to use alcohol in the next 12 months, while positivity of implicit associations will predict immediate approach tendencies toward alcohol. Funded by ABMRF/The Foundation for Alcohol Research.

### **Ready-to-Respond Initiative**

The primary goals of this project are to implement and evaluate a cross-generational, integrated substance abuse and HIV prevention program for African American female youth and their adult female caregivers in St. Louis County and St. Louis City. Funded by SAMHSA/CSAP.

### **Ready-to-Respond Initiative Cooperative Agreement**

This five-project is designed for experienced grantees in providing evidence-based prevention services by expanding knowledge and experience in developing blended substance abuse and HIV prevention services for at-risk minority populations in communities disproportionately affected by HIV/AIDS. Its major goals include providing an 8-week integrated substance abuse and HIV/AIDS intergenerational prevention program for a total of 480 African American girls ages 12 to 17 and their female caretakers over a five-year span to prevent the onset and reduce substance abuse and HIV infection and to increase HIV testing in communities of color. Funded by the Substance Abuse and Mental Health Services Administration (SAMHSA).

### **SBIRT: Screening, Brief Intervention, Referral and Treatment**

The primary goal of this SAMHSA/CSAT project is to implement SBIRT services across Missouri, to develop systems and procedures to facilitate that goal and to develop methods to maintain SBIRT services after and apart from the federal funding. Focusing on individuals at risk of developing physical problems as a result of their risky substance use this program uses evidence based brief interventions to reduce individuals' risks. Over the course of the 5-year project, more than 80,000 Missourians will be screened for these risky behaviors and those at risk will receive the appropriate services. Funded by the Missouri Department of Mental Health (MDMH).

## BHD Faculty & Staff Research Interests

**Rita E. Adkins, MPA**

Project Director

Substance use, alcohol use, substance research, alcohol research, consumer services research, screening and brief intervention, research methods

**Amanda Anderson, MSFT, LPC, CCDP-D**

Senior Research Specialist

Mental health, substance use

**Brendolyn Bailey-Burch, MS, MACSAPP**

Research Associate

Addiction, evaluation, evidence-based practices, faith-based, HIV/AIDS, prevention, spirituality, substance abuse, youth

**LaToshia Boyd-Lee, BS**

Project Coordinator

Substance abuse prevention, HIV prevention, mentoring, youth risk behaviors, faith-based, African American females

**Jean Campbell, PhD**

Research Professor

Consumer, evidence-based practices, mental health, research ethics, resilience, self-help, treatment outcomes

**Dong Cho, PhD**

Emeritus Associate Professor

Addiction, assessment, co-occurring disorders, computer applications, epidemiology, faith-based, informatics, internet, prevention, research methods, software, statistics, treatment outcomes, youth

**Matthew G. Hile, PhD**

Research Associate Professor

Division Director

Director, Behavioral Informatics

Addiction, assessment, co-occurring disorders, computer applications, dissemination, evidence-based practices, Fetal Alcohol Syndrome, grant writing, informatics, internet, mental health, policy, prevention, SBIRT, social networking, treatment outcomes, usability

**Barbara Keehn, RN, BSN**

Director, Professional Programs

Alcohol and drug abuse, substance abuse research, alcohol and drug abuse prevention and treatment, nursing, substance abuse integration and collaboration, SBIRT, management

**Ray D. Little, Sr., RSAC**

Research Specialist

Addiction, HIV/AIDS, prevention, spirituality, substance abuse, youth

**Jill Meyer, MS, LCPC, PhD**

Research Assistant Professor

Psychological well-being, stress, coping, late-deafness, child, youth, adoption, risk reduction

**Jeffrey Noel, PhD**

Research Assistant Professor

Underage drinking, alcohol expectancies, implicit attitudes, substance abuse prevention, HIV prevention, health disparities, evaluation

**Nicole Renick Thomson, PhD**

Research Associate Professor

Substance abuse prevention and treatment, predictors of youth risk behavior, maternal and child health, evaluation

**Catherine D. Williams, BS**

Coordinator Program/Project Support

Substance abuse prevention and treatment, data collection



# Child & Family Mental Health Services (CFMHS)

---

The goal of Child and Family Mental Health Services is to provide high quality evaluation, research, curriculum development and training, and consultation on issues related to the mental health and substance abuse needs of children and families in Missouri. Much of the work involves evaluating programs in schools and local or state-wide child and youth projects related to mental health and substance abuse. For some projects, however, the goal is interpreted broadly, and the CFMHS engages in evaluating several programs related to adults including those focused on outcomes of adult consumers of mental health services and prevention activities for youth and adults such as Mental Health First Aid.

## Initiatives

### **Crisis Intervention Training (CIT) Expansion**

This project involves an expansion and tracking of the Crisis Intervention Training in Missouri. The CIT project trains local police to effectively handle persons who need psychiatric assistance. Funded by the Bureau of Justice Assistance.

### **Empowering Missouri Consumers, United Voice for Hope and Recovery (Missouri National Alliance for the Mentally III)**

Awarded to the Missouri National Alliance for the Mentally III, the goals for this grant: (1) Train consumers to be leaders and engage in effective advocacy, (2) build infrastructure, promote consumer recovery through building work skills and reduce stigma against those with mental illness, and (3) foster a unified consumer voice in

Missouri. Funded by the Substance Abuse and Mental Health Services Administration (SAMHSA).

### **Hazelwood Safe Schools, Healthy Students**

The Safe Schools, Healthy Students initiative is an unprecedented collaborative grant program supported by three Federal agencies, the U.S. Departments of Education, Health and Human Services, and Justice. MIMH is evaluating the grant in the Hazelwood School District. Hazelwood is implementing a variety of programs emphasizing character building, healthy choices, and mental health. The evaluation consists of individual program evaluations as well as annual surveys of school staff and students to collect data on perception of safety, substance use, fighting and other behaviors. Funded by the Hazelwood School District.

### **Healthy Transitions**

This program provides transitional services for youth and young adults (ages 16-25) in Jackson County, Missouri who are leaving the child-serving system and entering adult mental health treatment. The evaluation includes examining the education, employment, treatment engagement, and related information as youth and young adults go through the program. Funded by the Substance Abuse and Mental Health Services Administration (SAMHSA).

### **Mental Health First Aid (MHFA)**

The main goals of the program are to provide 12-hour MHFA training to faith-based organizations in counties of rural Missouri. MIMH is conducting an evaluation on the project to determine changes in attitudes of participants toward persons with mental illness. Funded by the Missouri Foundation for Health.

### **Missouri Mental Health Transformation State Incentive Grant (MO MHT SIG)**

Missouri is one of nine states to be awarded a Mental Health Transformation State Incentive Grant by SAMHSA. The main goal is to transform mental health care in states by implementing the six goals of the President's New Freedom Commission (2001). This five-year, \$14 million grant was awarded to the Governor's Office and implemented by the Missouri Department of Mental Health. In addition to other evaluative activities, two proof of concept studies are funded under the initiative. They examine programs aimed at assisting in the recovery of adults with serious mental illness and resilience in children/youth with severe emotional disturbance. Funded by the Substance Abuse and Mental Health Services Administration (SAMHSA).

### **Missouri Behavioral Health Epidemiological Workgroup (BHEW)**

The BHEW is responsible for using population-based data to guide and improve policymaking, program development, and outcomes monitoring. Additional responsibilities include facilitating interagency and community collaboration for the collection, analysis, interpretation, and utilization of mental health and substance abuse related data. MIMH is involved in the project management of the grant. Funded by the Substance Abuse and Mental Health Services Administration (SAMHSA).

**Missouri Student Survey**

The main goal of this project is to monitor the substance use and other risk behaviors of adolescent youth. A biennial survey of middle and high school students in Missouri, the project has been jointly sponsored by the Department of Mental Health and the Department of Elementary and Secondary Education. Funded by the Missouri Department of Mental Health (MDMH).

**Missouri Youth Suicide Prevention Project**

Funded by the Garrett Lee Smith Act, this statewide project focuses on reducing youth suicides in Missouri. To date approximately 10,000 gatekeepers have been trained, and evaluation findings shows more people are able to identify the warning signs of suicide and feel prepared to assist and refer a suicidal individual to appropriate services. Funded by the Substance Abuse and Mental Health Services Administration (SAMHSA).

**Project Launch**

The project's purpose is to create a coordinated system to support children, ages 0-8, so that they can thrive in safe, supportive environments and enter school ready to learn and able to succeed. MIMH is evaluating the project and collecting data on emotion/behavior, family functioning, and program implementation. Funded by the Substance Abuse and Mental Health Services Administration (SAMHSA).

**School-based Prevention intervention and Resources Initiative (SPIRIT)**

MIMH is conducting an evaluation of the implementation of evidence-based substance abuse programs in five Missouri school districts. This program is designed to delay and/or decrease the use of substances, violence, and other negative behaviors. The project received the *2010 SAMHSA Service to Science Award* for the program and the evaluation. Funded by the Missouri Department of Mental Health.

**St. Joseph Circle of Hope**

The Circle of Hope project provides a system of care for children and youth in St. Joseph, Missouri. Wraparound and other services are provided for participants. The evaluation examines such data as child/youth behavior, caregiver strain, education, living situation, service and treatment, and depression. The project is in its fifth year. Funded by the Substance Abuse and Mental Health Services Administration (SAMHSA).

**Teacher Home Visit Program**

The Teacher Home Visit Program trains teachers in low income, underperforming schools to go to their students' homes to forge a relationship with the family. An implementation and outcome evaluation is currently being conducted in various school districts across St. Louis City and St. Louis County. Data being collected include: grades, attendance, discipline, teacher and parent/guardian perceptions of student academic performances, behaviors and attitudes, school attachment, school safety, school and home relationship, as well as parental/guardian involvement. Funded by the Greater Saint Louis Community Foundation.

## CFMHS Faculty & Staff Research Interests

**Amanda Whitworth Bequette, PhD**

Research Assistant Professor

Health persuasion, promotion, general wellness, research ethics

**Robyn Boustead, MPA**

Research Associate

Youth, trauma, system of care

**Karen Breejen, BA**

Research Specialist

Research methods, data analysis

**James Cook, PhD**

Project Director

Older adults and mental health

**Susan Depue, PhD**

Research Assistant Professor

Substance abuse prevention, evaluation, epidemiology

**Mary Dugan, PhD**

Research Assistant Professor

Motivational interviewing, addiction, cultural competence, health disparities, mental health, spirituality, substance abuse, prevention

**Carol J. Evans, PhD**

Research Associate Professor

Division Director

Child/youth mental health, mental health consumers, self-help, evaluation, prevention

**Rachel Kryah, MSW, MPH**

Senior Research Specialist

Youth, mental health, health disparities, violence and substance abuse prevention

**J. Scott Perkins, MSW**

Project Director

Suicide prevention

**Elizabeth Sale, PhD**

Research Associate Professor

Drug education, epidemiology, evaluation, evidence-based practices, mental health, policy, prevention, research methods, substance abuse, violence, suicide prevention

**Claire Ward, MSW**

Research Specialist

Mental health

**Virginia Weil, MSW, MASCAPP**

Project Development Specialist

Substance abuse prevention, mental health first aid



# Continuing Education (CE)

---

Continuing Education has provided high-quality, low-cost educational programs to mental health and social service professionals for nearly three decades; such programs are produced either by the Division alone or in conjunction with other agencies. The Division uses technological tools to make their training programs affordable and accessible to everyone who needs them and currently offers programming in four different formats, all of which can be approved for CEU credits. For more information on current programming, visit [www.mimhtraining.com](http://www.mimhtraining.com).

## Training Professionals

### Live Conferences

CE can produce meetings of any size, from one speaker to dozens, for audiences across Missouri and from most surrounding states. Many of our programs are half-day offerings that are repeated in multiple locations. This strategy minimizes attendees' time away from work while allowing for a significant number of people to attend the robust experience of live programming.

### Web Conferences

Individuals no longer need to travel away from their offices to participate in live trainings. The division's Web Conferences offer short-format courses that deliver live streaming video and utilize e-mail feedback for audience interaction with the presenters. These courses can stand alone or serve as a means to preview an upcoming Live Conference.

### **Web Training**

CE also produces web-based training programs either in conjunction with Live or Web Conferences or as stand-alone offerings. Presenters help develop on-line courses that convey important educational content and their presentations are supplemented with links to additional materials.

### **DVD Training**

Because many of our customers do not have easy access to the Internet, we also deliver all of our Web Training programs via DVD. We provide a booklet with much of the same material that is available on the website including post-tests and CEU applications. This is another cost-effective way to provide training to a wide audience.

## **Educating the General Public**

In addition to providing training to professionals via continuing education programming, the division also provides educational materials to the general public, including the following:

- With funding from the National Institute of Mental Health, CE created an interactive multimedia kiosk (“Mental Health Studios”) to teach the public about the biological bases of mental and addictive disorders. Now on permanent display at the St. Louis Science Center, the program uses photographs, animations and video to demystify mental illness. Program users can explore various aspects of mental illness including causes, symptoms, and treatments. The program’s non-linear format allows users to view only the information that is personally relevant or interesting, thereby enhancing the overall educational experience. Approximately 3,000 visitors use the program each month. The Missouri Department of Mental Health underwrote the cost of distributing this program to the 250 largest high schools in Missouri.
- The division has received several federal grants to teach individuals about the science of addiction, including one to place its “ATOD-TV” program in kiosks around the St. Louis metropolitan area. Program evaluation found that it was a successful educational tool, and the National Institute on Drug Abuse funded distribution of the program to nearly 20,000 schools nationwide.
- Other successful multimedia training efforts have included an interactive program using advanced video production techniques designed specifically for students, and a program to teach church-going African American youth about substance abuse using a variety of animated and video technologies. Please see [www.heyneuron.com](http://www.heyneuron.com) for a sampling of these programs.
- Recently the division has made efforts to translate its multimedia expertise into on-line formats. For example, the Camp Pain Retreat website

([www.painretreat.com](http://www.painretreat.com)) helps parents and their children who are suffering from undiagnosed pain. The site provides both educational materials as well as downloadable audio files to help children manage their pain.

## Continuing Education Accreditation Activities

CE also provides continuing education accreditation for outside parties. Adherence to rigorous guidelines enables us to serve as both a provider and a certifier of mental health education for dozens of programs across the state.

## MO Department of Mental Health

CE has a close relationship with the Missouri Department of Mental Health (DMH) and receives an annual blanket contract (Training Program Authorization; TPA) allowing creation of additional subcontracts with the DMH (approximately 12-24 per year). The subcontracts support activities as wide ranging as hiring consultants to provide special training to the employees of the DMH to creating documentary videos for both training and promotional purposes. Having the TPA ensures the DMH receives a rapid response to their immediate needs.

Continuing Education has recently become the Missouri Department of Mental Health's primary provider of on-line training activities, already having produced dozens of Internet-based training modules that use text, audio, video and interactive testing to teach DMH employees important concepts necessary for the successful completion of their work.

## CE Faculty & Staff Research Interests

### **Joel Epstein, PhD**

Research Associate Professor

Division Director

Addiction, computer applications, drug education, education, evaluation, health literacy, mental health, multimedia, neuropsychology, parenting, software, substance abuse



# Evaluation, Policy & Ethics (EPE)

---

The Evaluation, Policy and Ethics division was established in 1993. Many of its initiatives in the first six years were closely linked to Missouri Department of Mental Health (DMH) projects, but, as the division has grown, more projects have been developed directly with community-based agencies. The general areas of EPE expertise include program evaluation and policy analysis in mental health including psychiatric disorders and substance abuse. The division has also developed expertise in a number of more narrowly-defined topics within mental health including mental health epidemiology, services research, co-occurring disorders (psychiatric and substance abuse disorders), special populations including racial and ethnic minorities, older adults, the homeless, and residents of rural areas.

## Initiatives

### AFCT

The Phoenix Programs, Inc. in Columbia, MO, received funding for this project from the Center for Substance Abuse Treatment and has contracted with MIMH to conduct the evaluation of the project. The Phoenix Programs implemented an Assertive Family Centered Treatment (AFCT) using the Assertive Community Reinforcement Approach (ACRA) coupled with Assertive Continuing Care (ACC) to expand the capacity and strengthen an existing treatment program that serves nine rural counties in central Missouri. This project serves adolescents, ages 12-20

(inclusive) within the service area who have been diagnosed with a substance use disorder or a co-occurring substance abuse disorder and mental illness and their families/primary caregivers. Total enrollment for the three year period will be 132 adolescents and 195 parent/caregivers. Data from the GAIN is being analyzed to assess the success of the program intervention and to help specify the program/contextual factors and client factors associated with these outcomes. Treatment staff collected data from the Working Alliance Inventory and the Measuring the Integrity of Services Scale and MIMH is analyzing the results. Funded by Phoenix Programs, Inc.

#### **Co-Occurring Disorders**

MIMH, in collaboration with the Missouri Department of Mental Health, developed a new screening and assessment system to identify Department of Mental Health clients who have both a substance abuse problem and a psychiatric disorder. The project uses evidence-based practices to develop a new treatment model for those who are identified as having co-occurring disorders. The State trained staff to implement the assessment system and pilot the screening, assessment and treatment model at selected rural and urban sites. Funded by the Missouri Foundation for Health.

#### **MEDNET**

MIMH, in collaboration with Rutgers Comparative Effectiveness Research Center, is conducting a 16 state research and learning collaborative on evidence-based approaches to improving quality in managing utilization of psychiatric medications in state Medicaid pharmacy systems. As part of this study, Missouri will provide data on psychotropic medication use by persons receiving Medicaid-supported services as part of a collaborative effort to develop state-level quality improvement programs. To build this improvement effort, Missouri will convene a state quality improvement collaborative, and develop a state plan for medication program improvement. The plan will address routine use of quality metrics while developing treatment provider feedback and follow up. In addition, staff will review and monitor clinical evidence for mental health care in Medicaid programming and develop and disseminate project information to peers, providers and clients. Missouri staff will also lead the adaptation of provider education materials to state needs for provider education activities. Funded by the Missouri Department of Mental Health.

#### **Modified Therapeutic Community in Supportive Housing Program (MTC-SHP)**

EPE staff members are also evaluating a program with the Phoenix Programs Modified Therapeutic Community in Supportive Housing Program (MTC-SHP) project which is implementing an evidence-based, long-term, MTC System of Care that combines existing permanent housing assistance and intensive individualized support services for rural, chronically homeless individuals who have a substance use disorder and a co-occurring mental illness (COD) in Boone County, Missouri. The objectives of the MTC SHP project are to reduce chronic homelessness, substance abuse and co-occurring mental illness and help participants to remain in permanent

housing by creating a comprehensive treatment program of care to serve 36 individuals over the course of the project. Funded by Phoenix Programs, Inc.

#### **Safe Haven II**

The target population for this project is male and female adults, 18 and older who have contracted, or are at risk of contracting HIV/AIDS, who are members of minority communities and fit these high-risk population demographics: Women, including women with children; young adults (18-24); men who inject drugs, including men who have sex with men (MSM), and at-risk non-injecting MSMs; individuals who have been released from prisons/jails within the past two years. EPE staff members are evaluating this program offered by Preferred Family Healthcare (PFH) which provides the outreach, pretreatment and treatment services. A maximum of 60 members of the target population are enrolled annually (a total of 300 across 5 years) into the Safe Haven II program. Surveys capture information such as substance abuse, depression, education, employment, readiness to change, and satisfaction with services. MIMH also collects service record information from PFH: intake interview data collected by PFH staff and types of services the client received. Funded by Preferred Family Healthcare.

#### **St. Louis Transformation Grant**

Evaluation, Policy and Ethics division members are evaluating a new SAMHSA – Center for Mental Health Services grant designed to transform the mental health service and housing systems of the City of St. Louis for people with severe mental illness who are homeless or at-risk of becoming homeless. The project will create system transformation by initiating two broad approaches: (a) *systems-level* activities that will address housing, financing, consumer and stakeholder participation, and provider awareness and sensitivity especially concerning trauma, and (b) *direct services to consumers* using evidence-based practices and best practices services that are critical elements of a person-centered and recovery-oriented system, and by expanding the capacity of additional best-practices and EBPs that already exist in the St. Louis system. Funded by the St. Louis Mental Health Board.

EPE is also involved in a number of smaller projects including:

- providing support for the cadre of community-based treatment programs serving clients with co-occurring disorders funded by the Missouri Foundation for Health,
- administration of a database study of mortality among psychiatric clients in Missouri funded by the Missouri Department of Mental Health,
- consulting with Kansas City foundation to estimate the cost to society of mental illness, and
- tracking drug abuse trends for St. Louis.

## EPE Faculty & Staff Research Interests

**Rachel Christiansen, BSW, MSW**

Research Specialist

Mental health, co-occurring disorders, organizational change, evidence based practices

**Katherine Etheridge, MPPA**

Research Specialist

Mental health evaluation, youth services, public health

**Andrew L. Homer, PhD**

Research Assistant Professor

Mental health administration and policy development, substance abuse data development, co-occurring disorders programming and evaluation research, mental health transformation

**Sara Suzanne McCudden, MA**

Project Development Specialist

ACCESS database development, data analysis and report generation

**Debra L. O'Neill, BS, MBA, MSW**

Project Development Specialist

Evaluation, gerontology, data analysis, report writing, systems theory

**Ed Riedel, MSW, LCSW**

Project Development Specialist

Co-occurring disorders, evaluation, mental health/substance abuse programs

**Anna Savu, MA**

Research Specialist

Mental health, substance abuse programs, client follow-up

**Deborah Sprague, MA**

Senior Research Specialist

Program coordination, evaluation, writing, training, mental health, substance abuse

**James M. Topolski, PhD**

Research Associate Professor

Division Director

Mental health epidemiology, substance abuse prevention, program planning and evaluation, Hispanics, elderly, rural, systems



## MIMH Faculty & Research Staff, Expertise & Interests

### **Rita E Adkins, MPA**

#### **Project Director**

#### **Behavioral Health Division**

Rita Adkins has been with MIMH for over 15 years, and has experience in project management as well as the design and management of large databases. As the project manager for the Consumer-Operated Services Program (COSP) Multi-Site Research Initiative Coordinating Center, Substance Abuse Mental Health Services Administration (SAMHSA), she was responsible for the daily management and monitoring of the Center's cooperative agreement, as well as for the coordination of its multiple components at eight study sites across the country. Adkins maintained and analyzed a large dataset of individuals seeking publicly funded substance abuse treatment. She also managed the Quality Service Review process, a comprehensive review method for measuring and assessing the practical performance of the children's System of Care.

#### **Current Projects:** SBIRT

**Key Terms:** Substance use, alcohol use, substance research, alcohol research, consumer services research, screening and brief intervention, research methods

### **Amanda Anderson, MSFT, LPC, CCDP-D**

#### **Senior Research Specialist**

#### **Behavioral Health Division**

Amanda Anderson's experience has been in working with the co-occurring field. She has worked with several agencies in the Columbia community focusing on the treatment of individuals with severe and persistent mental health disorders. Prior to coming to MIMH she was the manager of the co-occurring disorders program at Burrell Behavioral Health in Columbia. There she focused on assessing clients for mental illness and substance use issues. She developed groups to meet the needs of the clients. One of her biggest accomplishments was starting a program for families who were the caregivers for adults with mental illnesses. Currently she is managing the health coaches at the MOSBIRT-Columbia site. Here she is responsible for coordinating SBIRT implementation with five sites, actively working with health care providers to teach them the importance of educating patients on the health consequences of substance use, and working with the health coaches to ensure appropriate SBIRT interventions.

#### **Current Projects:** MOSBIRT

**Key Terms:** Mental health, substance use

**Brendolyn Bailey-Burch, MS, MACSAPP (Counseling)****Research Associate****Behavioral Health Division**

A Missouri advanced certified substance abuse prevention professional (MACSAPP), Brendolyn Bailey-Burch has worked in the prevention field for more than 15 years focused mostly on the African-American community. Bailey-Burch has served as principal investigator (PI) on six federally funded, multi-million dollar grants focused on HIV/AIDS, substance abuse, and hepatitis prevention in communities of color disproportionately affected in these areas. She spearheaded the award-winning *Girls Holla Back!* prevention project — an intergenerational approach to substance abuse and HIV/AIDS prevention for African-American girls and women. She is also responsible for evaluating a Drug-free Communities grant in rural southeast Missouri. Bailey-Burch has conducted and prepared evaluation reports on topics such as cultural competency, substance abuse, dual diagnosis and client satisfaction. Her current areas of interest include the study of the relationships between spirituality, health, and mental health; the study of the effectiveness of faith-based prevention programs, particularly those geared toward substance abuse, HIV/AIDS, and youth; the examination of evaluation components as a means to program improvement; and health disparities among people of color.

**Current Project:** Ready to Respond Initiative (PI)

**Key Terms:** Addiction, evaluation, evidence-based practices, faith-based, HIV/AIDS, prevention, spirituality, substance abuse, youth

**Amanda Whitworth Bequette, PhD (Social Psychology)****Research Assistant Professor****Child and Family Mental Health Services**

A social psychologist by training, Amanda Whitworth Bequette has research interests in a broad number of areas including the relationship between self-esteem, social inclusion and healthy behaviors, risk and prevention activities for both youth and adults, and outcome based assessments of prevention and promotion activities. In conjunction with her MIMH colleagues, Dr. Bequette has conducted needs assessments and outcomes research for various local and state-level projects.

**Current Projects:** Project LAUNCH (Co-investigator), MO MHT-SIG (Evaluation team), Crisis Intervention Training (CIT) Expansion (Principal Investigator - evaluation), and Empowering Missouri Consumers (Co-Investigator - evaluation). Dr. Bequette has taught the following courses, Introduction to Psychology, Social Psychology, Research Methods, Critical Thinking in Psychology, and Health Psychology

**Key Terms:** Self-esteem, social inclusion and healthy behaviors, health prevention activities for youth and adults, outcome based assessments prevention and promotion activities, research methodology.

**Robyn S. Boustead, MPA****Research Associate****Child and Family Mental Health Services**

Research interests and expertise include developing trauma-informed systems that work to decrease and address issues related to chronic, toxic stress and history of traumatic events, especially with veterans and their families. Boustead works with adult consumers to provide support for them in their role as parents, and provides

screening and early intervention for the children of adult consumers. Ms. Boustead is also a site visit coordinator for SAMHSA and co-teaches a course on school mental health policy, law and ethics.

**Current Projects:** Healthy Transitions (Project Director), Project LAUNCH (Consultant), Missouri Mental Health Transformation State Incentive Grant (MO MHT-SIG) (Project Director), St. Joseph Circle of Hope (Consultant).

**Key Terms:** Child/youth mental health, trauma, youth transitions

**LaToshia Boyd-Lee, BS**

**Project Coordinator**

**Behavioral Health Division**

Research interests and area of expertise include prevention based and include the study of adolescent/teen risk behavior, female sexual health, HIV prevention, substance abuse prevention, and the effectiveness of spirituality and faith-based prevention programs. Boyd-Lee also has expertise in study of health disparities among people of color, and intergenerational prevention programming focused around communication and bonding between adult family or mentors and youth

**Current Projects:** Ready-to-Respond Initiative (Program Director); DESE First Steps Maltreatment Prevention Grant (Program Coordinator)

**Key Terms:** Substance abuse prevention, HIV prevention, mentoring, youth risk behaviors, faith-based, African American females

**Karen M. Breejen, BA**

**Research Specialist**

**Child and Family Mental Health Services**

Primary research interests include the impact of and relationship between bullying and aggressive interactions in youth on subsequent health related attitudes and behaviors, specifically among marginalized groups. Expertise includes experimental design and methodology, construction and validation of psychometric instruments, and advanced statistical data analysis in relation to the evaluation of substance abuse and violence prevention programs for children and youth. Statistics: nonparametric, parametric, repeated measures, meta-analysis, multivariate, regression, structural equation modeling. Research Methodology: Experimental and quasi-experimental design, program evaluation (quantitative and qualitative), interview techniques, systematic observation, psychometric theory, systematic and stratified random sampling, design sensitivity, power analysis.

**Current Projects:** Missouri Student Survey (statistician, data analyst), SPIRIT (statistician, data analyst), MO MHT-SIG (Coordinator –QSR), St. Joseph Circle of Hope (statistical consultant)

**Key Terms:** Psychometric theory, bullying, aggression, LGBT, program evaluation, health behaviors/attitudes, Structural Equation Modeling (SEM)

**Jean Campbell, PhD (Social Science)**

**Research Professor**

**Behavioral Health Division**

Jean Campbell is director of MIMH's Program in Consumer Studies and Training. She has focused her work on evaluating the effectiveness of emerging new behavioral health service models, such as recovery-based rehabilitative programs, based on the knowledge and practices of peer-run programs for adults with mental illness. Campbell currently serves as PI on two projects. The Missouri Department of

Mental Health Consumer Operated Service Program (COSP) Quality Improvement Initiative is a part of the MH Transformation grant. Under this grant, Campbell works to convert state-funded, consumer-operated service programs into evidence-based practices by implementing the Fidelity Assessment Common Ingredients Tool (FACIT), a continuous quality improvement tool developed by the COSP Multisite Research Initiative; field-test the FACIT, and report the results. In the Depression and Bipolar Alliance — Heartland Consumer Network project funded by SAMHSA/CMHS to build recovery based communities in Missouri to support mental health consumer well-being and community integration. Campbell has developed an assessment tool to determine the nature and level of community well-being structures, beliefs and practices, and trained facilitators to administer and analyze the results for education and advocacy activities.

**Current Projects:** Missouri Department of Mental Health Consumer Operated Services Programs (PI)

**Key Terms:** Consumer, evidence-based practices, mental health, research ethics, resilience, self-help, treatment outcomes

**Dong Cho, PhD**

**Emeritus Research Associate Professor**

**Behavioral Health Division**

As a member of the Behavioral Health Division for over four decades, Dong Cho served many years as the director of the division. He has been the principal investigator (PI) for eight federal grants that brought in \$11.26 million for MIMH research and \$2.93 million indirect to the University of Missouri. He has been PI for eleven contracts that brought in \$3.1 million to MIMH. Cho conducts mental health and substance abuse services research; provides technical consultation and directs or coordinates responsibilities for the conceptualization, development and testing of management information systems and clinically oriented decision support systems. He also provides consultation on experimental design, statistical procedures, data management for computer analyses and interpretation of the statistical results to the division investigators.

**Current Projects:** The Circle of Hope (PI)

**Key Terms:** Addiction, assessment, co-occurring disorders, computer applications, epidemiology, faith-based, informatics, internet, prevention, research methods, software, spirituality, statistics, treatment outcomes, youth

**Rachel Christiansen, BSW, MSW**

**Research Specialist**

**Evaluation, Policy, and Ethics**

Expertise in organizational change, evidence based practice implementation, co-occurring disorders, trauma and abuse.

**Current Projects:** Missouri Foundation for Health Co-Occurring Disorders, St. Louis Mental Health Board Transformation (Fidelity Evaluator)

**Key Terms:** Mental health, co-occurring disorders, organizational change, evidence based practices

**Susan M. Depue, PhD (Behavioral Neuroscience)****Research Assistant Professor****Child and Family Mental Health Services**

Dr. Depue is the current Project Director for the State Epidemiological Workgroup project. Prior to taking this position she was the SPF SIG Project Director. In these capacities she has worked with both state and local organizations to improve the data infrastructure of substance abuse prevention across the state of Missouri. She has also worked to teach local coalitions how to use the data in order to be most effective with the limited resources they have. In addition, Dr. Depue has been involved with several large scale evaluations. She was also part of the team which analyzed and reported on the most current Missouri Student Survey results.

**Current Projects:** Missouri State Epidemiological Outcomes Workgroup (SEOW, Epidemiologist/Project Director)

**Key Terms:** Evaluation, evidence-based practices, mental health, prevention, substance abuse, Data-driven Decision Making, assessment

**Mary C. Dugan, PhD, LCSW (Counselor Education)****Research Assistant Professor****Child and Family Mental Health Services**

Dr. Dugan's research interests include Motivational Interviewing (MI), substance abuse prevention, and the relationship between trauma and substance abuse. In particular, she is interested in the use of MI as a prevention tool for substance abuse in the general population, and using Screening & Brief Intervention (SBI) as a public health model. Also, she is interested in the use of MI as a tool to promote behavior change with individuals having other medical issues, such as diabetes, heart conditions, high blood pressure, cholesterol, etc. Dr. Dugan's expertise is in Motivational Interviewing (MI) and in the use of the Motivational Interviewing Treatment Integrity (MITI) scale. She has been a member of the MI Network of Trainers (MINT) since 2007. She has provided a variety of trainings around the state of Missouri and surrounding states. In addition, Dr. Dugan is an invited speaker for the 2011 annual Polish MI Association Conference in Warsaw, Poland. While there, she will also provide a two-day training on using MI to deal with resistance and a 1-day training on using the MITI as a tool for providing supervision.

**Current Projects:** Missouri's Screening Brief Intervention & Referral to Treatment (Motivational Interviewing Supervisor and Project Trainer), Empowering Missouri's Consumer, 2010, (PI - evaluation). Dr. Dugan teaches a counselor practicum and has taught Introduction to Motivational Interviewing.

**Key Terms:** Motivational Interviewing as a prevention tool, Fidelity Measurements of Motivational Interviewing.

**Joel Epstein, PhD****Research Associate Professor****Division Director, Continuing Education**

Joel Epstein has been a Principal Investigator on three separate grants from the National Institute on Drug Abuse (NIDA). He has a deep commitment to educating both children and the general public about the "Science of Addiction." His first project resulted in a series of videos, CD-ROMs, workbooks, and a website all designed to teach elementary students about the biological bases of addiction. These interactive materials were not only received enthusiastically by both students and teachers alike, but also were demonstrated to be effective in teaching the

students about substance abuse and the brain. His second award resulted in a series of videos and interactive computer programs designed for use with African-American church-going youth. Delivered via weekend "camps," these materials brought science education to a new venue and were very successful in teaching students lessons about addiction. His third NIDA project will result in the creation of interactive video games to teach middle-school students about the "Science of Addiction." In addition to being an active program developer and researcher, Epstein is also committed to teaching parenting skills. His book, *Family Writes*, is designed to help foster family communication via innovative interactive writing activities. Based on content from the book, he has led numerous parent/child workshops. Finally, Epstein's educational efforts have also extended to Internet-based activities. He helped produce and design an interactive web-site for parents of children who have undiagnosed pain (<http://www.painretreat.net>). Featuring information, activities, and informational resources, the website has been a popular site with parents, receiving an average of 15,000 hits a month.

**Current Projects:** Gender Differences in Response to Interactive Substance Abuse Education Programs (PI); several state and local training projects

**Key Terms:** Addiction, computer applications, drug education, education, evaluation, health literacy, mental health, multimedia, neuropsychology, parenting, software, substance abuse

**Carol J. Evans, PhD (Community Psychology)**

**Research Associate Professor**

**Division Director, Child and Family Mental Health Services**

Director of the Children and Family Mental Health Services division, Dr. Evans provides overall leadership for the unit. In addition, she is principal investigator/lead evaluator for several federally-funded projects including the MO MHT-SIG, St. Joseph, Missouri Circle of Hope System of Care grant, Healthy Transitions, and Project Launch. She also leads the evaluation for the SPIRIT project, Missouri Student Survey and Mental Health First Aid. She has conducted research on consumer and family issues and is currently lead evaluator for the Adult Proof of Concept Studies focused on the impact of the Peer Specialist Program on consumers. She has over twenty years of experience in program evaluation and project management, and has worked with diverse cultural groups in both rural and urban settings. Dr. Evans has expertise in consumer and family issues related to mental health, substance use prevention for children/youth, youth and young adult transitions in mental health, program evaluation and grant writing.

**Current Projects:** Mo MHT-SIG (PI-evaluation), Mental Health First Aid (PI-evaluation), SPIRIT (PI-evaluation), Missouri Student Survey (PI-evaluation), Health Transitions (PI-evaluation), Project Launch (PI-Evaluation), St. Joseph Circle of Hope (Evaluation Consultant). She also co-teaches a course on school mental health policy, law and ethics.

**Key Terms:** Grant writing, substance use prevention, youth and young adult transitions, adult consumers of mental health, early childhood

**Katherine Etheridge, MPPA****Research Specialist****Evaluation, Policy, and Ethics**

Experience and expertise with youth services and cultural research.

**Current Project:** Transformation (Data Collector)

**Key Terms:** Mental health evaluation, youth services, public health

**Tamela Franks, MSW****Senior Research Specialist****Behavioral Health Division**

Tamela is currently responsible for the day-to-day management of the MIMH supported websites. In addition, she supports the Screening, Brief Intervention, and Referral to Treatment (SBIRT) project. On the SBIRT project, she assists with the maintenance of the MOSBOX application and with data management functions. Prior to working on the SBIRT project, she was a data collector for the In It 2 Win and Jeff-VanderLou Tobacco Cessation projects.

**Key Terms:** Youth development, public education, community development, substance use, alcohol use, substance research, alcohol research, consumer services research, screening and brief intervention, research methods

**Matthew G. Hile, PhD (Clinical Psychology)****Research Associate Professor****Division Director, Behavioral Health Division****Director, Behavioral Informatics**

Matthew Hile is a licensed psychologist trained in clinical and community psychology. An active researcher in behavioral informatics since 1984, Hile is a Fellow of the American Psychological Association, and has published numerous peer-reviewed articles and edited two books on behavioral informatics. He has served as Information Technology (IT) Director for multiple grants and projects and has developed and implemented a number of automated systems. Hile's current efforts are focused on the MOSBIRT project, a 5-year \$12.6 million effort to screen more than 80,000 Missourians as they pass through emergency departments and other medical settings across the state. For this he helped create MOSBox, a tablet computer-based Screening Brief Intervention and Referral to Treatment (SBIRT) system to provide health coaches the information they need to reduce risky substance use behaviors in medical settings. He also has developed systems on the web that help consumers and their families find services for substance abuse, mental health, or mental retardation ([www.samhi.mimh.edu](http://www.samhi.mimh.edu)); screen adolescents for various problems (e.g., substance use, depression, and tobacco use) and refer them to appropriate services ([www.screenmo.org](http://www.screenmo.org)); along with a multi-project, web-based tracking system to allow evaluation staff to track and interview participants during MIMH's various projects.

Hile's current research interests include usability, health communications that motivate behavioral change, online self-change protocols and supportive communities, promoting behavioral change with cell phones, developing and supporting communities of practice in social service, graphic data representations, and tools to help behavioral health staff become more effective.

**Current Projects:** MOSBIRT (PI, IS Director); Hope United Circle of Hope (IS Director); Physician Training (IS Director); Missouri Foundation Health–SBIRT (IS Director); Missouri Foundation for Health-2nd Life (PI).

**Key Terms:** Addiction, assessment, co-occurring disorders, computer applications, dissemination, evidence-based practices, Fetal Alcohol Syndrome, grant writing, informatics, internet, mental health, policy, prevention, SBIRT, social networking, treatment outcomes, usability

**Andrew L. Homer, PhD**  
**Research Assistant Professor**  
**Evaluation, Policy, and Ethics**

Research interests are in mental health administration and research with specific knowledge and expertise in programming in co-occurring disorders (psychiatric disorders and substance abuse). Homer also has specific expertise in mental health data systems and program evaluation.

**Current Projects:** Co-Occurring Disorders (PI); Cadre (PI)

**Key Terms:** Mental health administration and policy development, substance abuse data development, co-occurring disorders programming and evaluation research, mental health transformation.

**Barbara Keehn, RN, BSN**  
**Chief Operating Officer**  
**Director, Professional Programs**  
**Behavioral Health Division**

Barbara Keehn has 37 years of experience working in the field of alcohol and drug abuse for 37 years. Prior to joining MIMH she worked for the Missouri Division of Alcohol and Drug Abuse and led several large grant projects. Keehn's research interests are in alcohol and drug abuse integration in medical environments, alcohol and drug abuse treatment, prevention and research, utilization of evidence-based practices and educating nursing and other medical professionals about alcohol and drug abuse.

**Current Project:** Screening, Brief Intervention, Referral and Treatment (MOSBIRT) (Project Director).

**Key Terms:** Alcohol and drug abuse, substance abuse research, alcohol and drug abuse prevention and treatment, nursing, substance abuse integration and collaboration, SBIRT, management.

**Rachel Kryah, MSW, MPH**  
**Senior Research Specialist**  
**Child and Family Mental Health Services**

Rachel Kryah's research experience broadly focuses on evaluating the effectiveness of statewide and local alcohol/substance abuse and violence prevention programs for at-risk youth and programs for mental health consumers. She conducted a prevalence study of tobacco use among Missouri mental health consumers that has informed the development of a statewide tobacco cessation plan. In collaboration with MIMH colleagues she has conducted several needs assessments, including a St. Louis children health care needs assessment, a statewide mental health needs assessment and is currently conducting a county level needs assessment and evaluation of a child wellness project. Her other interests are in health promotion/education, specifically around physical activity and nutrition.

**Current Projects:** MO MHT-SIG, Project Launch, Teacher Home Visit Program

**Key Terms:** Mental health, health disparities and violence and substance abuse prevention

**Ray D. Little, Sr., RSAC**  
**Research Specialist**  
**Behavioral Health Division**

As a Suicide Prevention Outreach Instructor, Ray Little works in the areas of community outreach for substance abuse prevention, HIV/Aids and STD prevention, and the intergenerational approach to HIV/AIDS prevention for African American females. He recruits African American youth and their adult family members to participate in the outreach programs, as well as evaluating the administration of the pre and post youth and adult questionnaire surveys.

**Current Projects:** Suicide Prevention Grant; Ready to Respond Initiative (Outreach Research Coordinator)

**Key Terms:** Addiction, HIV/AIDS, prevention, spirituality, substance abuse, youth

**Sara Suzanne McCudden, MA**  
**Project Development Specialist**  
**Evaluation, Policy, and Ethics**

Interests and expertise in mental illness, substance abuse, homelessness, and school climate and performance.

**Current Projects:** Data Manager for: Missouri Suicide Prevention Project, SPIRIT, Safe Haven II, Hazelwood Safe Schools Healthy Students, Circle of Hope, Post Partum and Pregnant Women, Teacher Home Visit Program, Missouri Student Survey, and St. Joseph Costs and Services

**Key Terms:** ACCESS database development, data analysis and report generation

**Jill Meyer, MS, LCPC, PhD (Counseling)**  
**Research Assistant Professor**  
**Behavioral Health Division**

Jill Meyer's research through the doctoral program in Counselor Education at UMSL has focused on the psychological well-being of individuals with late-deafness, and emerging adults who are deaf. In addition to reviewing the psychometric properties of specific instruments, this research examined the well-being and life satisfaction of individuals with hearing loss. To date, she has published one journal article and a book chapter on this research. Meyer's grant funded projects at MIMH have focused broadly on child and family well-being, permanency, safety, and risk (abuse) reduction. Her research at MIMH incorporates child (e.g., age, gender, diagnosis, etc.) and family related (e.g., socioeconomic status, mothers' substance abuse, history of abuse, etc.) correlates of risk of abuse. She has also assisted with outcome evaluations of evidence-based prevention/intervention services focused on child and family risk factors.

**Current Projects:** Circle of Hope (Evaluation Director), Diligent Recruitment (Principal Investigator), DESE – Medically Fragile Infants (Co-Investigator)

**Key Terms:** Psychological well-being, stress, coping, late-deafness, child, youth, adoption, risk reduction

**Jeffrey Noel, PhD (Social Psychology)**  
**Research Assistant Professor**  
**Behavioral Health Division**

A social psychologist by training, Jeffrey Noel's research is focused primarily on understanding and preventing/reducing risk behavior by youth through examination of social-cognitive, situational and cultural risk and protective factors.

Noel has conducted outcome evaluations for several prevention efforts implemented by collaborators at MIMH and other community agencies including school districts and treatment providers, most notably the *Girls Holla Back!* program, which provides alcohol/drug and HIV prevention education for African American adolescent girls and their adult female caregivers. Specific outcomes assessed for this program include substance abuse and high-risk sexual behavior, perceptions of peer norms, self-efficacy, and knowledge about HIV and AIDS. In collaboration with an MIMH faculty colleague, he is currently conducting a series of studies investigating explicit, self-reported expectancies about the effects of alcohol versus automatic or implicit associations between alcohol and positive or negative effects among children and adolescents prior to onset of drinking behavior. This basic research is designed to derive new approaches to primary prevention of underage drinking.

**Current Projects:** The Impact of Social Goal Priming on Adolescents' Implicit Alcohol Cognitions (PI); Educating Students, Educating the Community: An Evidence-based Program to Reduce Alcohol Abuse in Missouri's Fox C-6 School District (PI); SBIRT: Screening, Brief Intervention, Referral and Treatment (Evaluation Director); Minority Substance Abuse and HIV Prevention – Ready to Respond Initiative (Evaluation Director); Educating Students, Educating the Community: An Evidence-based Program to Reduce Alcohol Abuse in Missouri's Fox C-6 School District (Evaluation Co-Principal Investigator).

**Key Terms:** Underage drinking, alcohol expectancies, implicit attitudes, substance abuse prevention, HIV prevention, health disparities, evaluation

**Debra L. O'Neill, BS, MBA, MSW**  
**Project Development Specialist**  
**Evaluation, Policy, and Ethics**

Deb O'Neill has expertise in gerontology-related research, budget preparation, writing, and evaluation coordination. Her interests include aging, particularly related to care giving; substance use/abuse/misuse, health literacy, internet use/social interaction, epidemiology, public health, and system dynamics/systems theory.

**Current Projects:** DESE/First Steps: Child Maltreatment (Evaluation Coordinator), IAT: The Impact of Social Goal Priming on Adolescents' Implicit Alcohol Cognitions (Data Collection Coordinator), Washington University Practicum Student (Field Instructor).

**Key Terms:** Evaluation, gerontology, data analysis, report writing, systems theory

**Joseph J. Parks, MD**  
**Distinguished Professor of Science**  
**Director, Missouri Institute of Mental Health**

In September 2010, Park was appointed as a Distinguished Research Professor of Science with the University of Missouri-St. Louis and as the MIMH Director. Parks also serves as the Chief Clinical Officer for the Missouri Department of Mental Health in Jefferson City. He is a Clinical Assistant Professor of Psychiatry with the University of Missouri-Columbia, and President of the Medical Director's Council of the National Association of State Mental Health Program Directors. He practices psychiatry on an outpatient basis at Family Health Center, a federally funded community health center established to expand services to uninsured and underinsured patients in the Columbia area. Dr. Parks has authored or coauthored a

number of original articles, monographs, technical papers, and reviews on implementation of Evidence Based Medicine and Pharmacy Utilization Management and behavioral treatment programs.

**Key Terms:** Dissemination, health disparities, policy, schizophrenia, treatment outcomes

**Ed Riedel, MSW, LCSW**

**Project Development Specialist**

**Evaluation, Policy, and Ethics**

Riedel has over 20 years of clinical experience in community mental health and rehabilitation and is an Applied Suicide Intervention Skills Master Trainer. His research interests include co-occurring disorders, homelessness, mental health, substance abuse, suicide, and healthcare systems.

**Current Projects:** Missouri Foundation for Health Co-occurring Disorders (Project Coordinator) Missouri Foundation for Health Cadre Support (Project Coordinator), St. Louis Mental Health Board Transformation (Evaluation Project Coordinator)

**Key Terms:** Co-occurring disorders, evaluation, mental health/substance abuse programs

**Elizabeth Sale, PhD (Political Science)**

**Research Associate Professor**

**Child and Family Mental Health Services**

Dr. Sale's research interests are in the fields of prevention and mental health promotion for at-risk youth, with specific expertise in conducting large, multi-site longitudinal evaluations in the areas of substance abuse, violence and suicide prevention. She has over 20 years of experience in both process and outcome evaluation, with expertise in the development of study designs, sampling methods, survey instruments, fidelity tools, and analysis plans. Her quantitative skills include psychometric testing, repeated measures analysis of covariance, meta-analysis, and structural equation modeling. Dr. Sale is currently the Principal Investigator or Co-Investigator for several large-scale evaluations including SAMHSA-funded Missouri Youth Suicide Prevention Initiative, the Department Education/SAMHSA/Department of Justice-funded Safe Schools/Healthy Students Initiative and the SAMHSA-funded Missouri Mental Health Transformation Incentive Grant. She is also evaluating the effectiveness of a prevention program for several St. Louis school districts aimed at strengthening teachers and at-risk families. She was lead author of the comprehensive Missouri Mental Health Needs Assessment and Resource Inventory used to establish statewide goals and priorities for the Missouri Department of Mental Health. She previously she served as a lead evaluator and project manager on three SAMHSA-funded national cross-site evaluations including the National Cross-Site Evaluation of High-Risk Youth, the Starting Early Starting Smart National Cross-site Evaluation and the National Youth Mentoring/Family Strengthening Cross-Site Evaluation.

**Current Projects:** MO MHT-SIG (Co-PI), SPIRIT (Co-PI), Missouri Youth Suicide Prevention Project (PI-evaluation), Missouri Student Survey (Co-PI), Teacher Home Visit Program (PI-evaluation), Hazelwood Safe Schools, Healthy Students (PI-evaluation).

**Key Terms:** Substance abuse prevention, violence prevention, suicide prevention, program evaluation, longitudinal studies, mental health promotion, quantitative data analysis

**Anna Savu, MA**  
**Research Specialist**  
**Evaluation, Policy, and Ethics**

**Current Projects:** Safe Haven II (Data Collector); Pregnant and Postpartum Women project (Data Collector)

**Key Terms:** Client follow-up, mental health, substance abuse programs

**Deborah Sprague, MA**  
**Senior Research Specialist**  
**Evaluation, Policy, and Ethics**

Sprague has counseling experience with a variety of populations and has extensive experience in research and program evaluation. She is the Evaluation Director and Project Coordinator for ADEPT – *Alcohol and Drug Education for Prevention and Treatment*, a SAMHSA/CSAT-funded Medical Residency Training Project for Screening, Brief Intervention and Referral to Treatment (SBIRT). She serves as Evaluation Director on a CSAT-funded study of Adolescent Assertive Family Treatment implemented by Phoenix Programs, Inc. in Columbia and is currently Evaluation Coordinator on a grant with Phoenix Programs, funded by CMHS, that is utilizing quantitative and qualitative measures for evaluation of implementation and outcomes of this Modified Therapeutic Community – Supportive Housing Program. Research interests and passions include spirituality, spirituality in healing, health literacy and overcoming health disparities.

**Key Terms:** Program coordination, evaluation, writing, training, mental health, substance abuse

**Nicole Renick Thomson, PhD (Developmental Psychology)**  
**Research Associate Professor**  
**Behavioral Health Division**

A developmental psychologist, Nicole Thomson focuses broadly on the multiple influences on youth risk behavior, particularly substance abuse, derived from a social ecological perspective of child development. Her research incorporates individual-level (e.g., gender/gender identity, self-concept, ethnicity, alcohol cognitions, etc.) and family level (e.g., socioeconomic status, mothers' substance abuse, etc.) correlates of youth risk behavior and looks at the interaction of these levels (e.g., the influence of family alcohol use on alcohol-related cognition). Thomson also has conducted outcome evaluations of evidence-based prevention/intervention programming targeting individual and family level risk factors and is working with an MIMH colleague on research that examines self-reported alcohol expectancies and implicit, automatic associations about alcohol among youth who have not initiated drinking behavior.

**Current Projects:** Evaluation of Substance Abuse Treatment for African American Women At-Risk for HIV/AIDS (Principal Investigator for Evaluation); Evaluation of Long-term Residential Substance Abuse Treatment for Pregnant/Postpartum Women (Principal Investigator for Evaluation); Promoting Strengths among Caregivers of Infants with Health or Developmental Concerns (Principal Investigator); Gender Differences in Response to Interactive Science of Addiction Curriculum (Co-Investigator); Impact of Social Goal Priming on Adolescents' Implicit Alcohol Cognitions (Co-Investigator); Educating Students, Educating the Community: An Evidence-based Program to Reduce Alcohol Abuse in Missouri's Fox C-6 School District (Co-Investigator)

**Key Terms:** Substance abuse prevention and treatment, predictors of youth risk behavior, maternal and child health, evaluation

**James M. Topolski, PhD (Industrial/Organizational Psychology)**

**Research Associate Professor**

**Division Director, Evaluation, Policy and Ethics**

Research interests are in a variety of areas within mental health including: (a) mental health epidemiology, (b) program planning and evaluation, (c) policy analysis, (d) organizational

development and strategic planning, (e) special populations especially older adults, Hispanics, those who are homeless, and residents of rural areas, and (f) system dynamics.

**Current Projects:** St. Louis Transformation Grant; MTC-SHP; AFCT (PI); Safe Haven II (PI); Pregnant and Postpartum Women (PI); Mortality Study (PI)

**Key Terms:** Mental health epidemiology, substance abuse prevention, program planning and evaluation, Hispanics, elderly, rural, systems

**Claire Ward, MSW**

**Research Specialist**

**Child and Family Mental Health Services**

Ward has experience working with agencies providing mental health services throughout the state, as well as working with school districts. Her research experience focuses on the evaluation of statewide and local mental health programs, alcohol/substance abuse and violence prevention programs for at-risk youth. She is currently working on the federally funded Missouri Mental Health Transformation State Incentive Grant (MHT-SIG) as project manager for the Proof of Concept Study, which is focused on the impact of the Peer Specialist Program on consumers and the Family Support Worker program on children with severe emotional disturbance and their families. In addition, she is project manager for the evaluation of the Missouri Crisis Intervention Team Expansion funded by the 2010 Justice and Mental health Collaboration Program. Her other interest include health and nutritional promotion and education.

**Current Projects:** MO MHT-SIG (Research Specialist), Proof of Concept Study (Project Manager), Missouri Crisis Intervention Team Expansion (Project Manager)

**Key Terms:** Mental health, alcohol/substance abuse prevention, evaluation

**Virginia Weil, MSW, MASCAPP**

**Project Development Specialist**

**Child and Family Mental Health Services**

Weil has a diverse list of research interests. These include substance use and violence prevention, suicide prevention, elementary and secondary education and after-school programs, mental health, correctional system, brain development, child development, social competence, aggression, and girls and women's issues. She has expertise in the following areas: substance use and violence prevention; suicide prevention; mental health including children, youth and adults; and elementary after-school programs. She is a statewide trainer for Mental Health First Aid and is a Certified Substance Use Prevention Specialist.

**Current Projects:** Youth Suicide Prevention (Project Development Specialist), SPIRIT (Project Manager), Teacher Home Visit Program (Project Manager), Mental Health First Aid (Project Development Specialist)

**Key Terms:** Substance use prevention and epidemiology, alcohol, marijuana, tobacco, inhalants, ecstasy, methamphetamine, violence prevention, aggression, suicide, suicide post-mortem, youth suicide, LGBTQ suicide, elementary and secondary education and after-school programs, mental health, depression, anxiety, PTSD, NSSI (non-suicidal self-injury), eating disorders, LGBTQ mental health, bipolar, personality disorders, mental illness

**Catherine D. Williams, BS**  
**Coordinator Program/Project Support**  
**Behavioral Health Division**

Catherine Williams is a Certified Advanced Alcohol & Drug Counselor with a background in substance abuse counseling. Since joining MIMH in 1998 she has worked on several substance abuse projects, most currently on substance abuse treatment outcomes and women projects.



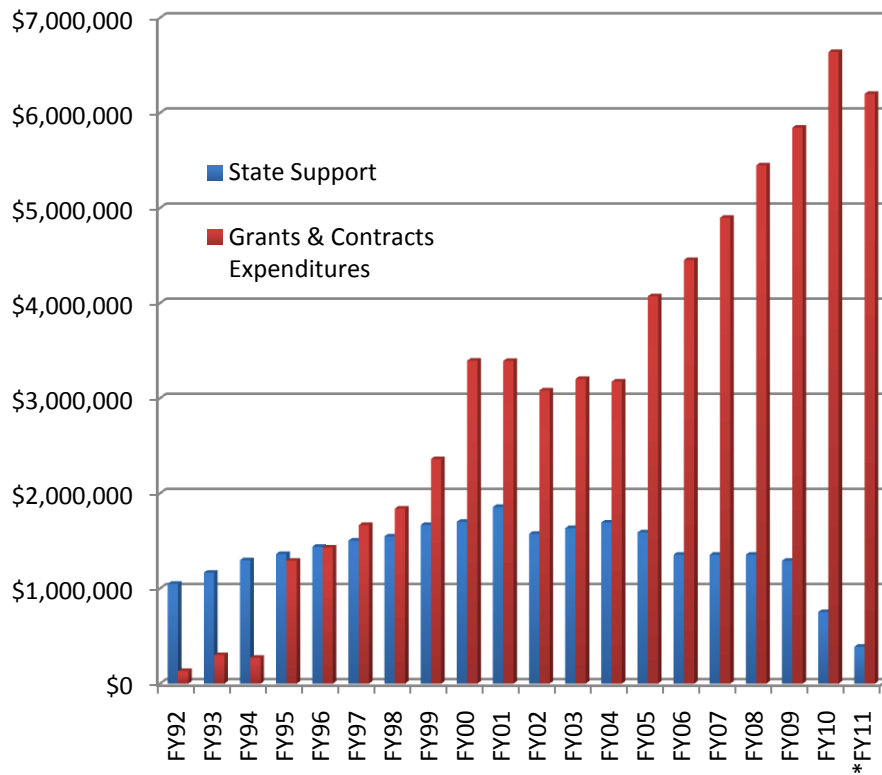
## Top 10 Active Grants & Contracts

Title	Current Year Amt	MIMH Total	Primary Applicant Total	Start	End	Contractor
Cooperative Agreements for Screening, Brief Intervention, Referral and Treatment (SBIRT)	\$2,450,751	\$10,510,341	\$12,300,000	09/30/08	09/29/13	MDMH
Mental Health Transformation-SIG	\$754,848	\$5,500,000	\$14,190,500	10/01/06	09/30/11	MDMH
First Steps Maltreatment Prevention Grant	\$586,916	\$586,916	\$586,916	07/01/10	06/30/11	DESE
Ready to Respond Initiative	\$300,000	\$1,500,000	\$1,500,000	10/01/10	09/30/15	SAMHSA
St. Joe's Circle of Hope	\$275,000	\$1,000,000	\$9,400,000	10/01/06	09/30/10	Mo-Kan Regional Counsel
Co-Occurring Disorders: Mental Health and Substance Abuse	\$253,617	\$933,856	\$933,856	05/01/07	04/30/12	Missouri Foundation for Health
One Hope United-ACF-Children's Meth Grant	\$249,253	\$1,272,342	\$3,742,000	10/01/07	09/30/12	One Hope United
Gender Differences in Response to Interactive Substance Abuse Education Programs	\$226,086	\$1,074,188	\$1,074,188	03/15/09	03/14/13	NIDA
Youth Suicide Prevention II	\$212,231	\$626,588	\$1,500,000	10/01/08	09/30/11	MDMH
Project LAUNCH	\$159,684	\$650,000	\$3,273,422	10/01/10	09/30/15	SAMHSA
<b>TOTAL</b>	<b>\$5,468,386</b>	<b>\$23,654,231</b>	<b>\$48,500,882</b>			

MIMH CURRENTLY HAS 48 ACTIVE AWARDS



## FY2011 10 Grants & Contracts



MIMH has \$7.3 million in new awards in FY2011

\*Estimated expenditures for FY11 as of 05/31/11.

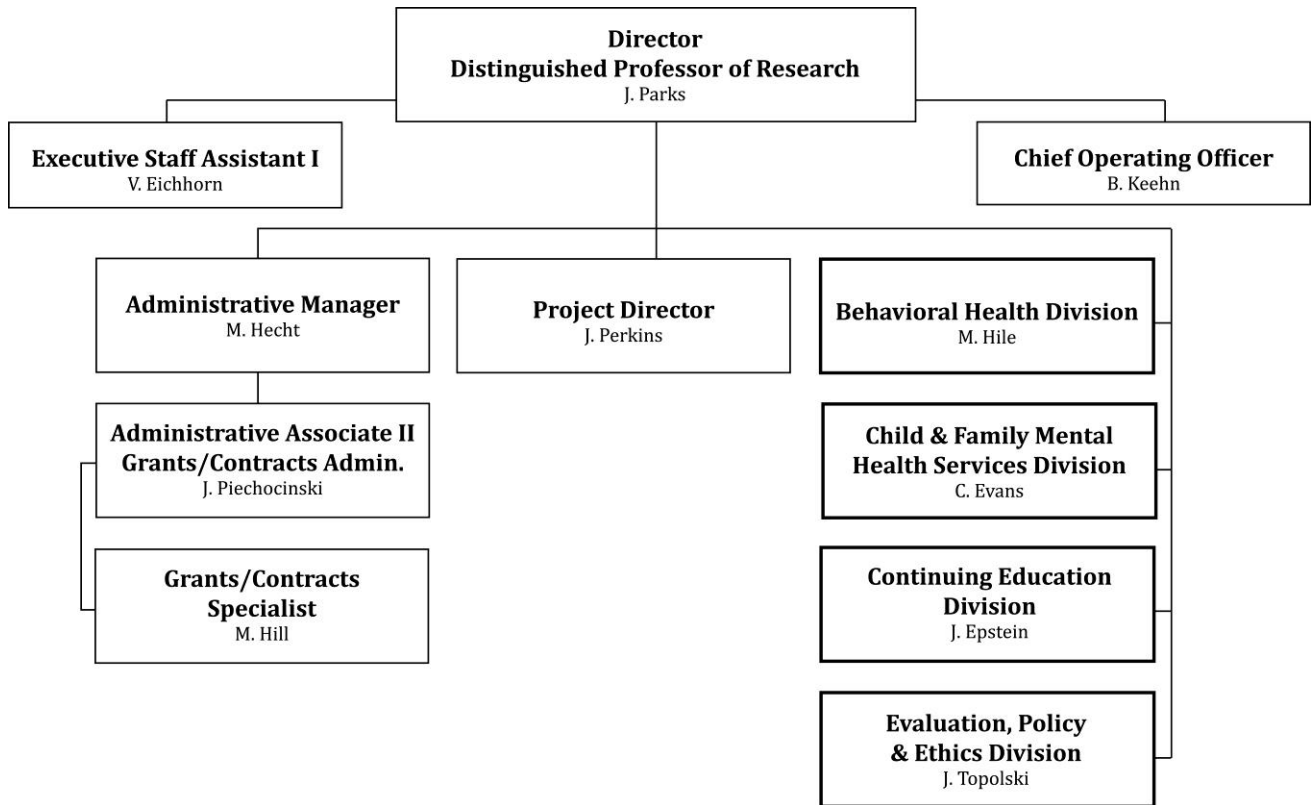
\*FY11 is the last year in which MIMH will receive state support.



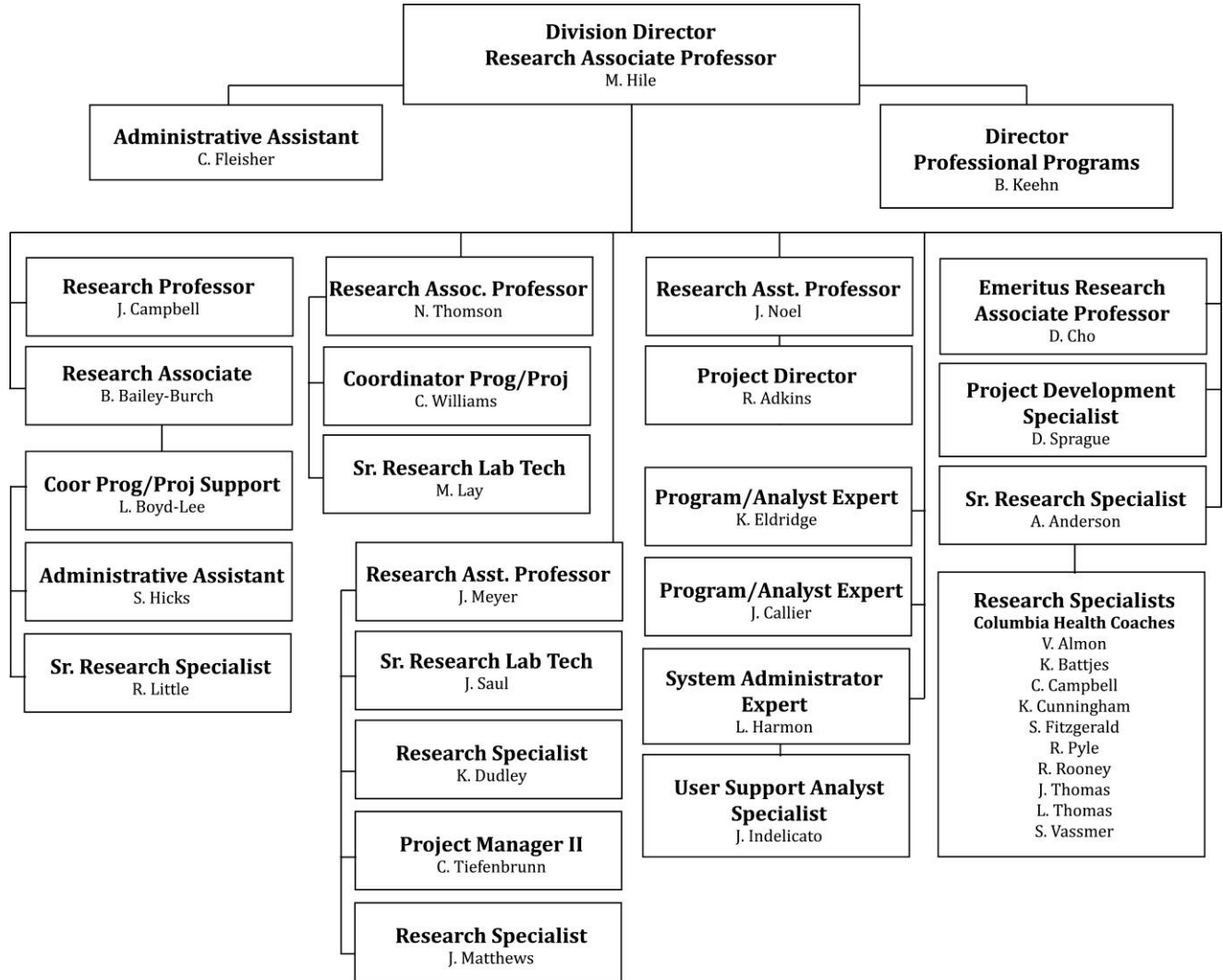
# MIMH Organizational Charts

Updated May 2011  
Part-time employees not included.

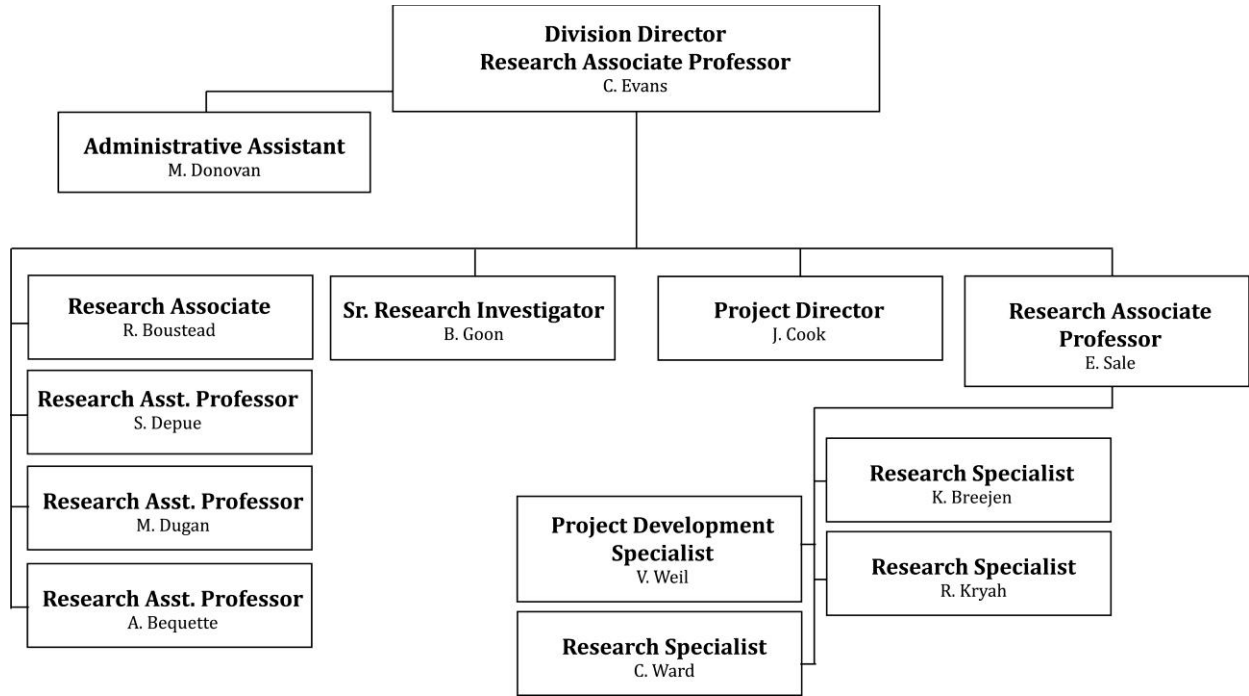
## 1. Missouri Institute of Mental Health



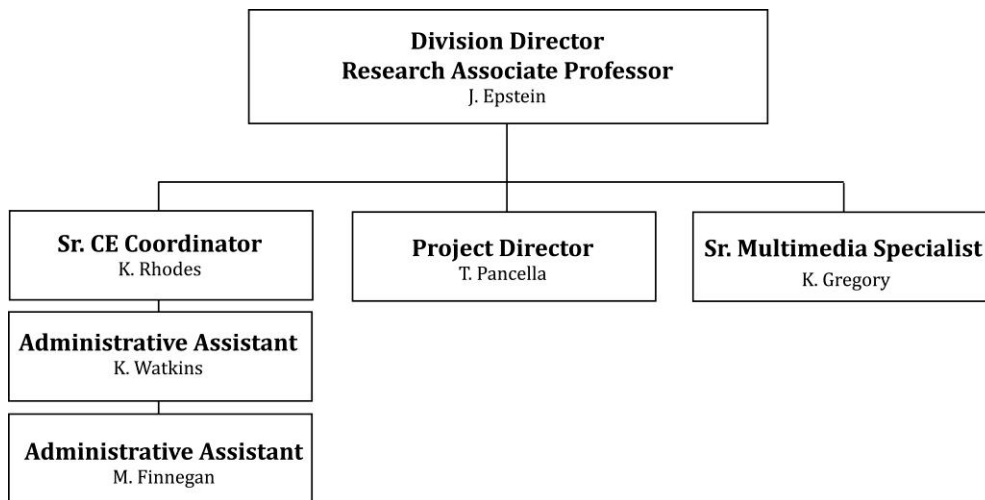
**2. Behavioral Health Division**



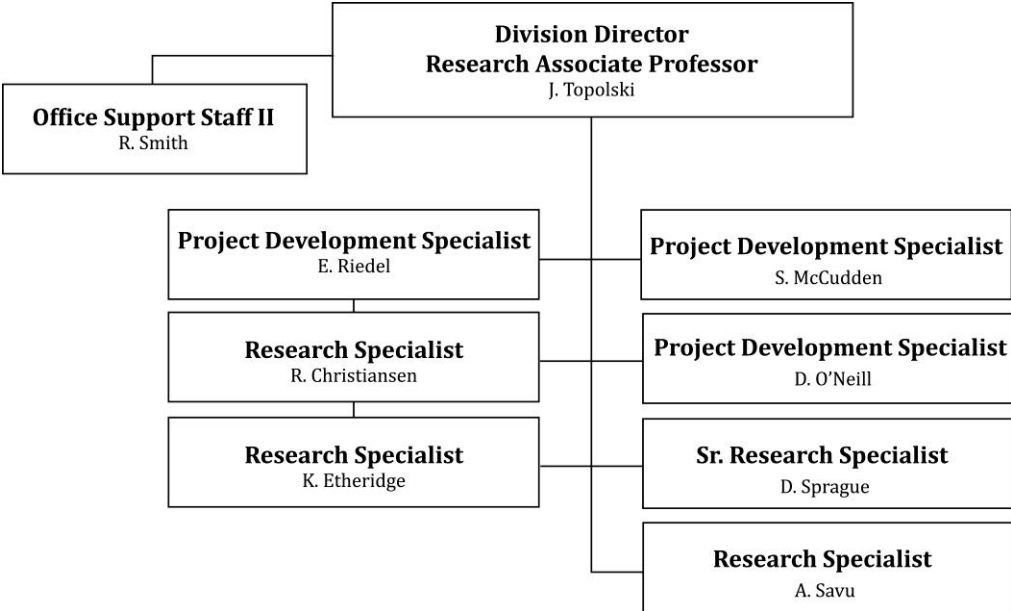
### 3. Child & Family Mental Health Services



### 4. Continuing Education



5. Evaluation, Policy & Ethics



# UMSL

University of Missouri–St. Louis  
Office of Research Administration  
341 Woods Hall  
One University Boulevard  
St. Louis, MO 63121  
314-516-5899  
[www.umsf.edu](http://www.umsf.edu)

Missouri Institute of Mental Health  
5400 Arsenal Street  
St. Louis, MO 63139  
314-877-6401  
[www.MIMH.edu](http://www.MIMH.edu)