

Appendix A

UMSL College of Nursing
25th Anniversary Celebration Events, 2006-07

UNIVERSITY OF MISSOURI-ST. LOUIS
COLLEGE OF NURSING

25th Anniversary Celebratory Events, 2006-07

September 14, 2006	Scientific Presentation, “Biological Rhythms in Research: Valuable Variable or Interfering Nuisance?”, Dr. Lynn Farr, University of Nebraska
October 2, 2006	Kickoff Celebration with Presentations by Founding Dean Dr. Shirley Martin, “The First Twenty-Five Years of the College of Nursing” and current Dean, Dr. Juliann Sebastian, “Planning for the Next Twenty-Five Years”
November 2, 2006	Nu Chi chapter, Sigma Theta Tau International Honor Society for Nursing, presentation by Dr. Juliann Sebastian, “Doctor of Nursing Practice: Implications for Clinical Practice”
November 3, 2006	25 th Anniversary Symposium for College students, faculty, staff, UMSL faculty and staff, clinical agency representatives, and other nursing educational programs “Trends and Opportunities in Nursing Education”, Dr. Geraldine Bednash, Executive Director, American Association of Colleges of Nursing
December 4-8, 2006	Finals Survival Week Activities for College of Nursing Students
January 18, 2007	25 th Anniversary Symposium for College students, faculty, staff, UMSL faculty and staff, clinical agency representatives, and other nursing educational programs “Academic Clinical Nursing Education and Practice”, Dr. Carolyn A. Williams, Professor and Dean Emeritus, University of Kentucky College of Nursing
January 19, 2007	Presentation, “Mentor M.A.G.I.C.” by Vicky Becherer for clinical agency representatives
February 14, 2007	Second Annual Wellness Day for students, faculty, staff
February 15, 2007 TO BE RESCHEDULED TO FALL, 2008 DUE TO ICE STORM	25 th Anniversary Symposium for College students, faculty, staff, UMSL faculty and staff, clinical agency representatives, and other nursing educational programs “Building Programs of Research and Research Cultures”

	Dr. Marilyn Sommers, Lillian S. Brunner Chair of Medical-Surgical Nursing, University of Pennsylvania School of Nursing
April 3, 2007	25 th Anniversary Symposium for College students, faculty, staff, UMSL faculty and staff, clinical agency representatives, and other nursing educational programs “Academic Assessment and Quality Improvement”, Dr. Sandra R. Edwardson, Professor and Dean Emeritus, University of Minnesota School of Nursing
April 28, 2007	Health and Home Fair, Affton Community Center, in collaboration with the UMSL Housing and Urban Development Project
May, 2007	Finals Survival Week Activities for College of Nursing Students

25th Anniversary Celebration Committee members:

Vicky Becherer, Chair
Jennifer Bussen
Beth Dudley
Susann Farberman
Glenda Gillespie
Dianne Hagan
Kathy Lee
Bobbie Lee
Sandy Lindquist
Shirley Martin
Sherry Meyers
Christy Niles
Margaret O'Connor
Chris Recktenwald
Diane Saleska
Tina Saunders
Julie Sebastian
Chris Seckman
Lanette Tanaka
Mary Kay Wolf

Appendix B

College of Nursing Current and Proposed Mission and Values Statements

UNIVERSITY OF MISSOURI-ST. LOUIS
COLLEGE OF NURSING

Mission and Values

CURRENT MISSION AND VALUES STATEMENTS

Mission:

The mission of the University of Missouri-St. Louis College of Nursing is to improve the health of people through the generation, dissemination, & application of knowledge. Through baccalaureate, masters, & doctoral studies & continuing education programs, we shape the future of nursing practice by developing nurse leaders who are dedicated to lifelong learning (UMSL CON Strategic Plan, 1999).

Values:

- Person-centeredness
- Intellectual rigor
- Accountability
- Collaboration
- Dynamism

(UMSL CON Strategic Plan, 1999)

PROPOSED MISSION AND VALUES STATEMENTS (draft, 3/2/07 College of Nursing Strategic Planning Retreat)

Mission (key points underlined):

The Mission of the College of Nursing at University of Missouri – St. Louis is to shape the future of nursing practice through education, service and research. Through innovative baccalaureate, masters, doctoral studies and professional programs we develop nurses who are dedicated to excellence and leadership. We leverage strategic partnerships to generate, translate, disseminate and apply knowledge that will improve health, with an emphasis on our metropolitan region.

Values (Draft Core Values, 3/2/07, College of Nursing Strategic Planning Retreat)

- Diversity
 - We recognize, celebrate and incorporate the value of the diversity in thought and culture in our environment.
- Intellectual discourse
 - We encourage free and open discussion, dialogue and debate of ideas.
- Caring
 - We offer ourselves through empathy, nurturing and mentoring.
- Professionalism

- We hold ourselves accountable to the standards of professional performance, practice and the ANA code of ethics.
- Mutual Respect and Support
 - We respect the importance of individual strengths and contributions, and support each other to ensure the success of our mission. We have an abundance mentality that drives us to work together to create the future vision we desire.
- Transparency
 - Organizational and interpersonal communication is open and honest.

Appendix C

Draft Strategic Priorities and Strategic Initiative Teams, and Strategic Planning Steering Committee

UNIVERSITY OF MISSOURI-ST. LOUIS
COLLEGE OF NURSING

Draft Strategic Priorities (3/2/07 College of Nursing Strategic Planning Retreat)

- 1. School of the 21st Century**
 - Dealing with changing demographics
 - Dealing with changing demands of the nursing profession
- 2. Expanding Advanced Education and Research**
 - DNP
 - Research
- 3. Collaborating with Local Healthcare Providers**
 - Experiential learning
 - Financial support
- 4. Enhancing the Culture of Cooperation**
 - Instilling values and professional ethic
 - Working together to accomplish the mission of the college
- 5. Funding for Sustainability and Growth**

Strategic Initiative Teams

Team 1: Leader – Melodie Rowbotham, Chair

The School of the 21st Century

- Akerson, Dottye
- Billman, Cynthia
- Hughey, Doug
- Meyers, Sherry
- Niles, Christy
- O'Connor, Margaret
- Saleska, Diane
- Taylor, Jen

Team 2: Leader – Dawn Garzon & Sue Farberman, Co-Chairs

Expanding Advanced Education and Research

- Bachman, Jean
- Borcharding, Kathy
- Fish, Anne
- Hsueh, Kuei-Hsiang
- Jenkins, Ruth
- Magnuson, Nancy
- Taliaferro, Donna

Team 3: Leader – Jenni Bussen, Chair

Collaborating With Local Healthcare Providers

- Becherer, Vicky
- Dudley, Beth
- Hirshberg, Mimi

- Recktenwald, Chris
- Seckman, Chris
- Sinacore, Lisa
- Whitworth, Janet

**Team 4: Leader – Judith Maserang, Chair
Enhancing the Culture of Cooperation**

- Campbell, Julie
- Hicks, Judy
- Mantych, Liz
- Nelson, Jean
- Saunders, Tina
- Sherman, Linda
- Sredl, Darlene
- Tanaka, Lanette
- Wolf, Mary Kay

**Team 5: Leader – Debbie Kiel, Chair
Funding for Sustainability and Growth**

- Frandsen, Gary
- Gallup, Kristi
- Hagan, Dianne
- Kendig, Sue
- Lee, Bobbie
- Lee, Kathy
- Lindquist, Sandy

Strategic Planning Steering Committee

Judith Maserang
Diane Saleska
Debbie Kiel
Bobbie Lee
Jennie Bussen
Dawn Garzon
Sue Farberman
Juliann Sebastian

Appendix D
College of Nursing Evaluation Plan

COLLEGE OF NURSING
 UNIVERSITY OF MISSOURI – ST. LOUIS
 EVALUATION PLAN
 Approved, Total Faculty, March 6, 2000

CONTEXT: Intended Outcomes						
Area of Assessment	AACN Criteria	Assessment Standard	Assessment Method	Assessor	Evidence of Assessment	Schedule
Mission of the CON	I A	CON Mission is appropriate to nursing education & practice, and is consistent with the University at large.	Review CON & University mission. Graduate & Alumni surveys.	Curriculum Committee, Dean's Council, Executive Comm.	Curriculum Committee minutes, Dean's Council minutes, Executive Comm. Minutes	Every 5 years
Curriculum: Philosophy & Organizing Framework.	III E I B	Reflects the beliefs of Faculty, needs of society & standards of practice.	Review philosophy & organizing framework related to societal needs and national standards of practice.	Curriculum Committee	Curriculum Committee minutes.	Every 5 years

Area of Assessment	AACN Criteria	Assessment Standard	Assessment Method	Assessor	Evidence of Assessment	Schedule
Outcomes	I B III A	The outcomes of each program reflect the needs of the community of interest and the standards of practice. They are consistent with the philosophy & mission.	Review national standards of practice. Review outcomes in relation to community needs & interests, philosophy, & organizing framework. Survey of employers.	Curriculum Committee, Program Committees	Curriculum Committee minutes, Program Committee minutes	Every 5 years
		Mission, philosophy, & program outcomes are clearly delineated in CON publications.	Review of faculty & student handbooks. Review of recruitment materials.	Dir. of Student Services. Student Affairs Comm., Coord. of Technology	CON Publications, Student Affairs Committee minutes	Every 5 years
Governance & Structure		The organizational structure is effective for advancing the mission & meeting the goals of the CON.	Review the organizational structure of the CON.	Dean, Dean's Council	Dean's Council minutes	Every 5 years
	I D	Faculty & students have a defined role in governance of the CON.	Review of faculty & student participation in minutes & on committee rosters.	Executive Committee, Student Affairs Committee	Executive Committee minutes, Student Affairs Committee minutes	Yearly

		The purposes & functions of the Faculty Association Committees are adequate & effective for meeting the CON mission & goals.	Review of bylaws related to CON mission.	Executive Committee.	Executive Committee minutes.	Every 3 years
Area of Assessment	AACN Criteria	Assessment Standard	Assessment Method	Assessor	Evidence of Assessment	Schedule
Administrators: Dean & Associate Dean		Position descriptions are appropriate for effective CON functioning.	Review of position descriptions.	Dean's Council	Dean's Council minutes	Every 5 years.
Program Directors		Positions descriptions are appropriate for effective CON functioning	Review of position descriptions.	Dean's Council	Dean's Council minutes	Every 5 years
Faculty Association		The CON bylaws clearly delineate the powers, responsibilities, & organization of the Faculty Association.	Review of bylaws	Executive Committee	Executive Committee minutes	Every 3 years.
Evaluation Plan		The evaluation plan provides standards that ensure quality improvement.	Review of evaluation plan.	Evaluation and Outcomes Committee, Dean's Council	Evaluation & Outcomes Committee minutes, Dean's Council minutes	Every 3 years

Input: Resources required to meet program goals.

Area of Assessment	AACN Criteria	Assessment Standard	Assessment Method	Assessor	Evidence of Assessment	Schedule
Curriculum: BSN Pre-licensure Program		Pre-licensure & general education courses provide the necessary foundations to be successful in the nursing program.	Review of pre-licensure & general education course outlines & objectives. Review of attrition & progression data. Review NCLEX results. Student survey.	Curriculum Committee, BSN Program Committee	Curriculum Committee minutes, BSN Program Committee minutes	Every 3 years.
		The nursing program builds on courses in the arts, sciences, and humanities.	Review of program of studies for pre-licensure tract.	Curriculum Committee, BSN Program Committee	Curriculum Committee minutes, BSN Program Committee minutes	Every 3 years.
		The admission criteria assure adequate preparation for success in the program.	Review of admission criteria in relation to attrition rate, graduation rate, NCLEX results.	BSN Program Committee, Student Affairs Committee	BSN Program Committee minutes, Student Affairs Committee minutes	Every 3 years

Area of Assessment	AACN Criteria	Assessment Standard	Assessment Method	Assessor	Evidence of Assessment	Schedule
	I B	Adherence to state & national standards such as AACN Essentials for Baccalaureate Education, CCNE Standards for Accreditation of Baccalaureate & Graduate Nursing Education Programs, & Missouri State Board of Nursing Minimum standards for Accredited Programs of Professional Nursing. -	Review AACN, CCNE, & Missouri State Board of Nursing Standards in relation to the BSN pre-licensure curriculum.	Curriculum Committee, BSN Program Committee	Curriculum Committee minutes, BSN Program Committee minutes.	Every 3 years.
BSN Post-licensure Program		General education courses provide the necessary foundation to be successful in the nursing program.	Review of General education course outlines & objectives. Review of attrition data, & graduation rate.	Curriculum Committee, BSN Program Committee	Curriculum Committee minutes, BSN Program Committee minutes	Every 3 years.
		The nursing program builds on courses in the arts, sciences, & humanities.	Review of program of studies for BSN post-licensure program.	Curriculum Committee, BSN Program Committee	Curriculum Committee minutes, BSN Program Committee minutes	Every 3 years.

Area of Assessment	AACN Criteria	Assessment Standard	Assessment Method	Assessor	Evidence of Assessment	Schedule
		Admission criteria assure adequate preparation for success in the program.	Review of admission criteria in relation to attrition data & graduation rates.	BSN Program Committee, Student Affairs Committee	BSN Program Committee minutes, Student Affairs Committee minutes	Every 3 years
		Prior learning is validated to ensure student success in meeting program outcomes.	Review of method for knowledge validation, attrition rate, & graduation rate.	Curriculum Committee, BSN Program Committee	Curriculum Committee minutes, BSN Program Committee minutes	Every 3 years
		Adherence to national standards such as AACN Essentials for Baccalaureate Education, & CCNE Standards for Accreditation of Baccalaureate & Graduate Nursing Education Programs.	Review of AACN, & CCNE Nursing Standards in relation to the BSN post-licensure curriculum.	Curriculum Committee, BSN Program Committee	Curriculum Committee minutes, BSN Program Committee minutes	Every 3 years/
MSN Program	III B III F	Admission criteria assure adequate educational preparation for success in the program.	Review of attrition rate, & graduation rate.	MSN Program Committee, Student Affairs Committee	MSN Program Committee minutes, Student Affairs Committee minutes	Every 3 years

		Builds on competencies of the BSN graduate & focuses on advanced nursing roles.	Compare BSN & MSN outcomes. Examine specialty areas offered in MSN program.	Curriculum Committee, MSN Program Committee	Curriculum Committee minutes, MSN Program Committee minutes	Every 3 years.
--	--	---	---	---	---	----------------

Area of Assessment	AACN Criteria	Assessment Standard	Assessment Method	Assessor	Evidence of Assessment	Schedule
		Adherence to national standards such as AACN Essentials in Master's Education, CCNE Standards for Accreditation of Baccalaureate & Graduate Nursing Education Programs, Report of the National Task Force on Quality Nurse Practitioner Education Criteria for Evaluation of Nurse Practitioner Programs, NONPF Curriculum Guideline and Program Standards for Nurse Practitioner Education.	Review of AANC, & CCNE standards, & NONPF Evaluation Criteria in relation to MSN curriculum. Review of results from certification exams.	Curriculum Committee, MSN Program Committee	Cooperative MSN Committee minutes, Curriculum Committee minutes, MSN Program Committee minutes	Every 3 years.
PhD Program		Admission criteria assure adequate educational preparation for success in the program.	Review admission criteria, attrition rates, graduation rates, & comprehensive examination results.	Doctoral Program Committee, Student Affairs Committee	Doctoral Program Committee minutes, Student Affairs Committee minutes.	Every 3 years

		Adherence to national standards such as Indicators of Quality in Doctoral Programs in Nursing Position Statement by AACN.	Review of national standards in relation to the Doctoral Program curriculum.	Doctoral Program Committee, Curriculum Committee	Doctoral Committee minutes, Curriculum Committee minutes	Every 3 years
Area of Assessment	AACN Criteria	Assessment Standard	Assessment Method	Assessor	Evidence of Assessment	Schedule
Academic Support	II F	Documents & publications accurately reflect resources available to students & faculty	Review of University & CON documents.	Director of Student Services, Student Affairs Committee, Coordinator of Technology	CON documents & publications, Student Affairs Committee,	Every 3 years.
Human Resources: Faculty	II B II D	There are sufficient numbers of qualified faculty to meet the mission & goals of the CON & the program outcomes.	Review mission & program outcomes. Compare numbers & expertise of faculty.	Dean, Dean's Council	Dean's Council minutes	Yearly
		The diversity & educational level of the faculty is adequate to accomplish the mission & goals of the CON.	Review the diversity of the faculty related to the CON mission and goals.	Dean's Council	Dean's Council minutes	Yearly

		Faculty roles are clearly defined & support the mission & goals of the CON.	Review of role descriptions in relation to the CON mission and goals.	Dean's Council	Dean's Council minutes	Every 5 years.
		Faculty expertise in practice, curriculum, instruction, & research is adequate to accomplish the mission & goals of the CON.	Review faculty expertise related to the CON mission & goals.	Dean's Council	Dean's Council minutes	Every 5 years

Area of Assessment	AACN Criteria	Assessment Standard	Assessment Method	Assessor	Evidence of Assessment	Schedule
		University- wide faculty appointment guidelines for regular and non-regular faculty are published and clearly written.	Review appointment guidelines.	Dean's Council, Appointment, Promotion, & Tenure Committee	Dean's Council minutes, Appointment, Promotion & Tenure Committee minutes	Every 2 years.
Support Personnel		There are sufficient numbers of qualified support personnel to meet the mission & goals of the CON.	Review the numbers & qualifications of support personnel in relation to the CON mission & goals, Faculty survey, Support personnel survey.	Dean, Associate Dean, Dean's Council	Dean's Council minutes	Every 5 years

Orientation		Orientation plan for new faculty is effective.	Evaluation of orientation by new faculty	Executive Committee	Executive Committee minutes	Every 3 years.
Faculty Development	II A	Faculty development opportunities are available & utilized for stimulating growth in professional endeavors, scholarly activities, & community services.	Review of faculty development opportunities. Review of faculty growth in teaching, service, research, & practice as noted in Dean's Annual Report.	Executive Committee	Executive Committee minutes	Yearly
Faculty Evaluation	IV C	Faculty are evaluated according to clear & published guidelines consistent with the CON mission & goals.	Review of evaluation guidelines related to the CON mission. Faculty survey.	Dean, Associate Dean, Program Directors	Faculty Survey, Faculty Activity Reports	Yearly

Area of Assessment	AACN Criteria	Assessment Standard	Assessment Method	Assessor	Evidence of Assessment	Schedule
Promotion & Tenure		Faculty promotion & tenure guidelines are consistent with the University, clearly written, & effective in assisting faculty to plan, organize & document their professional activities.	Review of promotion & tenure guidelines for regular and non-regular faculty. Report of numbers of faculty applying for & receiving tenure &/or promotion. Faculty survey.	Appointment, Promotion, & Tenure Committee.	Appointment, Promotion, & Tenure Committee minutes.	Every 2 years.

		Faculty are mentored to enhance success in promotion and tenure.	Report of numbers of faculty applying for and receiving tenure &/or promotion. Faculty survey.	Appointment, Promotion, & Tenure Committee,	Appointment, Promotion & Tenure Committee minutes.	Every 2 years.
Faculty Rights		Policies & procedures are in place & published to protect faculty rights.	Review of policies & procedures. Review of availability of policies & procedures. Faculty survey.	Executive Committee	Executive Committee minutes	Every 2 years.
		Grievance procedures provide a fair, equitable, & nondiscriminatory process in the event of unresolved problems.	Faculty survey. Evaluation of grievance process	Executive Committee	Executive Committee minutes	Every 3 years
Workload		Faculty workload policy is equitable & effective in meeting the mission & goals of the CON.	Review of workload related to the mission of the CON. Faculty survey.	Dean, Associate Dean, Executive Committee	Executive Committee minutes	Yearly

Area of Assessment	AACN Criteria	Assessment Standard	Assessment Method	Assessor	Evidence of Assessment	Schedule
		Faculty teaching assignments are consistent with their academic & experiential preparation.	Review of teaching assignments related to faculty expertise.	Dean, Associate Dean	Faculty workload grid	Yearly

Teaching Effectiveness	III C III E	Faculty teaching effectiveness is of high quality as evaluated by students & peers.	Course evaluations. Teaching effectiveness evaluations. Peer evaluations. Graduate & alumni surveys.	Dean, Associate Dean	Survey Results, Course evaluation results	Yearly
Students Recruitment		The recruitment-marketing plan is effective in obtaining the planned number of qualified & diverse students.	Review of recruitment-marketing plan. Review number of students enrolling vs. those accepted. Review demographic data.	Director of Student Services, Student Affairs Committee	Student Services Annual Report, Student Affairs Committee minutes	Yearly
		Recruitment plan is effective in obtaining students who reflect the general population in terms of degrees held, ethnicity, race, & economics.	Demographic assessment of student population.	Director of Student Services, Student Affairs Committee	Student Services Annual Report, Student Affairs Committee minutes.	Yearly

Area of Assessment	AACN Criteria	Assessment Standard	Assessment Method	Assessor	Evidence of Assessment	Schedule
Financial Support		Adequate financial support is available & clearly published for students. Students are satisfied with financial aide.	Review of financial support available Review of CON student publications including financial aide, Student survey.	Director of Student Services, Student Affairs Committee	Student Affairs Committee minutes, CON publications	Every 2 years

		90% of scholarships & loans available are awarded.	Review scholarships & loans available in relation to those awarded.	Director of Student Services, Student Affairs Committee	Student Services Annual Report, Student Affairs Committee minutes.	Yearly
		CON is in compliance with published regulations for state & federal financial aid & traineeship programs.	Audits, Program reviews & reports.	Program Directors	Audit reports.	Every 3 years.
Registration & Advising		Students are satisfied with the advising & registration process.	Student survey	Director of Student Services, Student Affairs Committee	Student Services Annual Report, Student Affairs Committee minutes	Every 3 years.
Academic Policies	III G III H	Academic policies relate to & support the CON mission & goals.	Review of the academic policies in relation to the CON mission.	Student Affairs Committee	Student Affairs Committee minutes.	Every 3 years.
		Academic policies are published for easy access.	Student survey. Review of published materials, i.e. Handbooks, syllabi, etc.	Director of Student Services, Coordinator of Technology.	Student Services Annual Report. CON published materials.	Every 3 years.
		Students are satisfied with academic policies.	Student survey	Student Affairs Committee	Student Affairs Committee minutes	Every 3 years.
Area of Assessment	AACN Criteria	Assessment Standard	Assessment Method	Assessor	Evidence of Assessment	Schedule

Student Rights		Student processes are in place & published to protect student rights to file complaints or grievances.	Review of processes & policies. Report of grievances filed. Review of publications for student grievance policies & procedures.	Student Affairs Committee.	Student Affairs Committee minutes, CON and University publications	Every 3 years.
Student Development		Students are satisfied with the student orientation program	Student survey. Student evaluation of orientation.	Director of Student Services., Student Affairs Committee.	Student Services Annual Report, Student Affairs Committee minutes	Yearly
		Student Services programs provide developmental opportunities for students.	Student survey. Attrition rat	Student Affairs Committee, Director of Student Services	Student Affairs Committee minutes	Every 3 years.
Physical Resources	II B	Collection of print & nonprint resources is accessible, adequate, diverse, & current to accomplish the outcomes of the baccalaureate, master's, & doctoral programs.	Library annual evaluation. Student survey. Faculty survey. Review of library request forms.	Program Directors	List of collection, student and faculty assessment in surveys, Student success on licensure and certification exams	Every 3 years.
		Faculty & students are involved in decision making regarding library resources.	Review of committee roster. Student survey. Faculty survey.	Program Directors, Program Faculty	Minutes from Program meetings	Every 3 years

Area of Assessment	AACN Criteria	Assessment Standard	Assessment Method	Assessor	Evidence of Assessment	Schedule
Skills Laboratory		Laboratory facilities & equipment are adequate to accomplish program outcomes.	Faculty, Student, & Graduate surveys. Review of equipment related to program outcomes.	Program Directors, Lab. Coordinator, Faculty	Positive evaluations on surveys Student success on licensure and certification exams,	Every 3 years
		Faculty & students are involved in decision making regarding laboratory resources.	Student, Graduate, & Faculty surveys. Student membership on Library & Information Resources Committee	Program Directors, Lab. Coordinator, Faculty	Program Committee minutes	Every 3 years
Classrooms	III C	Instructional facilities are conducive to learning & adequate to meet the mission & goals of the CON.	Student, Graduate, & Faculty surveys	Dean's Council	Dean's Council minutes	Every 5 years
Offices		Faculty offices allow for privacy & are conducive to faculty accomplishment of goals.	Faculty survey. Faculty accomplishments as noted in Dean's Annual Report	Dean's Council	Dean's Council minutes	Every 5 years
		Office equipment, work space, & supplies are adequate to support faculty with research, teaching, & service goals.	Faculty survey. Faculty accomplishments as noted in Dean's Annual Report	Dean's Council	Dean's Council minutes	Every 5 years.

Area of Assessment	AACN Criteria	Assessment Standard	Assessment Method	Assessor	Evidence of Assessment	Schedule
Support Services such as: a) health services b) buildings & grounds c) parking d) security e) bookstore		Support services are adequate to allow students & faculty to meet the mission & goals of the CON.	Faculty, student, & graduate survey	Dean, Associate Dean	Dean's Annual Report	Every 5 years
Technical Support		Computer labs & equipment are adequate to meet the mission & goals of the CON.	Lab evaluations. Student, Graduate, & Faculty surveys.	Dean, Associate Dean, Coordinator of Technology	Dean's Annual Report	Every 5 years
		Students & faculty are satisfied with the technical support (i.e. equipment, help desk, computers aides) provided.	Student, Graduate, & Faculty surveys.	Dean, Associate Dean, Coordinator of Technology	Dean's Annual Report	Every 5 years.
		Electronic technology used in the classroom (i.e. AV, computers, CD ROM) is adequate to meet the mission & goals of the CON.	Course evaluations. Student, Graduate, & Faculty surveys.	Dean, Associate Dean, Coordinator of Technology	Dean's Annual Report	Every 5 years

Area of Assessment	AACN Criteria	Assessment Standard	Assessment Method	Assessor	Evidence of Assessment	Schedule
Clinical Facilities	III C	Clinical facilities provide a diversity of experiences needed to achieve course & program outcomes.	Course & clinical evaluations. Review of course & program outcomes	Curriculum Committee.	Curriculum Committee minutes	Every 5 years
Fiscal Resources: Financial Plan	II B	Budget is fiscally sound & supports CON mission.	Budget report. Faculty survey.	Dean	Dean's Annual Report.	Yearly
		Budget is balanced annually.	Budget report	Dean	Dean's Annual Report.	Yearly
		Faculty have input into the budget planning process.	Faculty budget input form. Faculty survey.	Dean	Dean's Annual Report.	Yearly
CON Development		Development office is soliciting & acquiring sufficient donations to meet the mission of the CON.	Review of contracts made & financial support received.	Development Officer, Dean	Development Office Report, Dean's Annual Report.	Yearly
Compensation & Benefits		Faculty & staff are satisfied with compensation & benefits package.	Faculty survey. Staff survey.	Dean	Dean's Annual Report	Every 3 years

Area of Assessment	AACN Criteria	Assessment Standard	Assessment Method	Assessor	Evidence of Assessment	Schedule
		Students are satisfied with health insurance.	Student survey.	Student Affairs Committee.	Student Affairs Committee minutes.	Every 3 years.
		Faculty are adequately rewarded for excellence in performance of job responsibilities.	Faculty survey.	Dean, Associate Dean.	Dean's Annual Report	Yearly
		Faculty salary & benefits are comparable with other departments on campus & peer U.S. Schools of Nursing.	Review of faculty salaries & benefits. Review of data regarding salaries & benefits in other departments & other schools of nursing.	Dean, Associate Dean	Dean's Annual Report	Every 3 years.

Process: Day-to-Day Function

Area of Assessment	AACN Criteria	Assessment Standard	Assessment Method	Assessor	Evidence of Assessment	Schedule
Overall Curriculum		The organizing framework is congruent with the mission & philosophy of the CON.	Review mission, philosophy, & organizing framework of the CON.	Curriculum Committee	Curriculum Committee minutes	Every 5 years
		The curriculum is logically organized, & internally consistent.	Review of philosophy, organizing framework, program , level, & course outcomes.	Curriculum Committee, Program Committees	Curriculum Committee minutes, Program Committee minutes	Every 5 years
		Opportunities exist for interdisciplinary collaboration.	Review of interdisciplinary collaboration activities. Review of course materials.	Curriculum Committee, Program Committees	Curriculum Committee minutes, Program Committee minutes	Every 3 years
		Learning activities facilitate attainment of course & program goals.	Review learning activities in relation to course & program outcomes. Student survey	Curriculum Committee, Program Committees	Curriculum Committee minutes, Program Committee minutes	Yearly
		Grading policies are defined & applied consistently.	Course evaluations. Student surveys. Review of syllabi.	Curriculum Committee, Program Committees	Curriculum Committee minutes, Program Committee minutes	Every 2 years

Area of Assessment	AACN Criteria	Assessment Standard	Assessment Method	Assessor	Evidence of Assessment	Schedule
		Faculty are accessible to students.	Student surveys. Course evaluations.	Student Affairs Committee	Student Affairs Committee minutes	Yearly
BSN Pre-licensure Curriculum		The key concepts of the CON philosophy are reflected in the BSN pre-licensure curriculum.	Review of philosophy with program & course outcomes & content.	Curriculum Committee, BSN Program Committee	Curriculum Committee minutes, BSN Program Committee minutes	Every 3 years
	IV A	Course instruction & evaluation methods are consistent with the philosophy & mission, & support student learning.	Review of course evaluations. NCLEX results.	Curriculum Committee, Evaluation & Outcomes Committee	Curriculum Committee minutes, Evaluation & Outcomes Committee minutes	Yearly
		Student clinical experiences enhance student learning.	Evaluation of Clinical Sites by faculty and students.	Curriculum Committee, Evaluation & Outcomes Committee	Curriculum Committee minutes, Evaluation & Outcomes Committee minutes	Yearly

BSN Post-licensure Curriculum		The key concepts of the CON philosophy are reflected in the BSN curriculum	Review of philosophy with program & course outcomes, & course content.	Curriculum Committee, BSN Program Committee	Curriculum Committee minutes. BSN Program Committee minutes	Every 3 years
	IV A	Course instruction & evaluation methods are consistent with the philosophy & mission & support student learning.	Review of course evaluations	Curriculum Committee, Evaluation & Outcomes Committee	Curriculum Committee minutes, Evaluation & Outcomes Committee minutes	Yearly

Area of Assessment	AACN Criteria	Assessment Standard	Assessment Method	Assessor	Evidence of Assessment	Schedule
		Student clinical experiences enhance student learning.	Evaluation of Clinical Sites by faculty and students.	Curriculum Committee	Curriculum Committee minutes	Yearly
MSN Curriculum		The key concepts of the CON philosophy are reflected in the MSN curriculum	Review of philosophy with program & course outcomes & content.	Curriculum Committee, MSN Program Committee	Curriculum Committee minutes, MSN Program Committee minutes	Every 3 years

	IV A	Course instruction & evaluation methods are consistent with the philosophy & mission & support student learning.	Review of course evaluations. Certification exam results	Curriculum Committee, MSN Program Committee, Evaluation & Outcomes Committee	Curriculum Committee minutes, MSN Program Committee minutes, Evaluation & Outcomes Committee minutes	Yearly
		Student clinical experiences enhance student learning.	Evaluation of Clinical Sites by faculty and students.	Curriculum Committee, MSN Program Committee, Evaluation & Outcomes Committee	Curriculum Committee minutes, MSN Program Committee minutes, Evaluation & Outcomes Committee minutes	Yearly
PhD Curriculum		The key concepts of the CON philosophy are reflected in the PhD curriculum	Review of philosophy with program & course outcomes & content.	Curriculum Committee, Doctoral Committee	Curriculum Committee minutes, Doctoral Committee minutes	Every 3 years

Area of Assessment	AACN Criteria	Assessment Standard	Assessment Method	Assessor	Evidence of Assessment	Schedule
		Course instruction & evaluation methods are consistent with the philosophy & mission and support student learning.	Review of course evaluations. Student survey	Curriculum Committee, Doctoral Committee	Curriculum Committee minutes, Doctoral Committee minutes	Yearly

Product: Extent to which goals have been achieved.

Area of Assessment	AACN Criteria	Assessment Standard	Assessment Method	Assessor	Evidence of Assessment	Schedule
Program Outcomes	III A	Outcomes for each program are clearly written & accessible to students.	Review of outcomes, Review student handbooks for presence & clarity of program outcomes.	Curriculum Committee, Program Committees	Curriculum Committee minutes, Program Committee minutes	Every 3 years
Graduation Rates	IV B	Students complete program requirements in a timely manner.	Review of student progression.	Curriculum Committee, Program Committees	Curriculum Committee minutes, Program Committee minutes	Yearly
Patterns of Employment	IV B	Graduates are employed in positions consistent with CON mission & goals.	Employer survey. Graduate survey. Alumni survey.	Director of Student Services, Program Committees	Student Services Annual Report, Program Committee minutes	Yearly

Area of Assessment	AACN Criteria	Assessment Standard	Assessment Method	Assessor	Evidence of Assessment	Schedule
Program Satisfaction & Effectiveness	IV B	Graduates & employers are satisfied with the education & performance of the graduate.	Graduate survey. Alumni survey. Employer survey.	Dean's Council	Dean's Council minutes	Yearly
		Graduates demonstrate progressive advancement & contribute to the profession.	Graduate survey. Alumni survey. Employer survey.	Dean's Council	Dean's Council minutes	Yearly
Faculty Satisfaction & Productivity		Faculty research & scholarship productivity is congruent with the CON mission & goals.	Faculty accomplishments as noted in Dean's Annual Report,	Dean, Dean's Council	Dean's Council minutes	Yearly
		Faculty participation in service & professional activities is sufficient to meet the goals & mission of the CON.	Faculty accomplishments as noted in Dean's Annual Report,	Dean, Dean's Council	Dean's Council minutes.	Yearly
		Faculty are satisfied with their jobs and the professional climate of the CON.	Faculty survey	Dean's Council	Dean's Council minutes	Every 2 years

Appendix E
Faculty Profile Tables

Appendix D.1 FACULTY PROFILE, Tenured Faculty

Name	Degrees & Date	Educational Institution	Board Certification	Teaching Area
Bachman, Jean	MS 2001 Health Informatics	University of Missouri - Columbia		Informatics
Assoc. Prof.	Post Doctoral Fellowship, 1999-2001 DNS 1985 MSN 1978 Maternal-Child; Educator BSN 1973	National Library of Medicine Applied Nursing Informatics University of Alabama – Birmingham Medical College of Georgia University of San Francisco		
Fish, Anne	Post-Doctoral Fellow 1992 PhD 1989 Nursing MSN 1984 Adult Health BSN 1981	University of Illinois Chicago University of Michigan Ann Arbor University of Texas Galveston University of Texas Galveston		Research
Assoc. Prof.	Post-doctorate 1994 Nursing Research/theory PhD 1981 Education & Psychology MSN 1976 Children BSN 1973	Indiana University St. Louis University St. Louis University		Research Cultural diversity
Jenkins, Ruth	Dr. P. H. 1988 Injury epidemiology MPH 1975	University of Texas Health Science Center University of Minnesota		Research Evidence based nursing
Lee, Bobbie	BSN 1969	St. Olaf College Northfield, MN		
Moog Endowed Prof.	PhD 1994 Business Adm.	University of Ky. College of Business & Economics	CS, Community Health Nursing (ANCC)	
Sebastian, Juliann	MSN 1977 Nursing	University of Ky. College of Nursing	Recognized as APRN-BC in	

			Mo.	
Taliaferro, Donna	BSN 1974 Nursing PhD 1991 Nursing MSN 1977	University of Ky. College of Nursing Texas Women's University Medical College of Georgia		Nursing theory PhD program and MSN
Assoc. Prof.	BSN 1973	Murray State University		

Appendix D.2 FACULTY PROFILE, Tenure Track Faculty

Name	Degrees & Date	Educational Institution	Board Certification	Teaching Area
Borcherding, Kathy	PhD 2005 Nursing	St. Louis University		Maternity & Research
Asst. Prof.	MSN 2000 Perinatal Nsg. BSN 1983	St. Louis University University of North Dakota Grand Forks		
Calvert, Wilma	MS 2005 Psychiatric Epidemiology	Washington University School of Medicine		Community Health Nursing Informatics
Asst. Prof.	PhD 2002 Nursing MSN 1986 Community Health Nsg. BSN 1981	University of Missouri - St. Louis University of Oklahoma - Tulsa Oral Roberts University Tulsa, OK		
Garzon, Dawn	Masters in Psychiatric Epidemiology 2005	Washington University School of Medicine	CPNP APRN, BC CCRN	Pediatrics
Asst. Prof.	PhD 2002 Nursing MSN 1994 BSN 1990	University of Missouri - St. Louis University of Florida Gainsville,FL University of Miami, FL		
Hsueh, Kuei-Hsiang	PhD 2001 Nursing	University of Arizona		Adult Health Gerontology Research
Asst. Prof.	MS 1994 Adult Health Nursing Geriatric NP MS 2001 Social Service Administration BS 1987 Nursing	University of Arizona Georgia Southwestern University Taipei Medical University		

FACULTY PROFILE: Non-Tenure Clinical Track

Name	Degrees & Date	Educational Institution	Board Certification	Teaching Area
Akerson, Dottye	Ph.D. 2001 Higher Ed.	St. Louis University		Adult Health Assessment
Assoc. Prof.	MSN 1989 Adult Health BSN – 1968	St. Louis University University of Missouri - Columbia		
Becherer, Vicky	MSN 2004 Nursing Education	Jewish College of Nursing and Allied Health		Pediatrics
Instr.	BSN 2003	Jewish College of Nursing and Allied Health		
Billman, Cynthia	MSN PhD candidate in Adult Education 1986 Maternal- Child BSN 1981	University of Missouri - Columbia		Profession Dimensions Community Health
Assoc. Prof.				
Bussen, Jennifer	MSN 2001 Administration BSN 1995	Truman University Kirksville, MO University of Missouri – St. Louis University of Missouri - Columbia		Maternity Ethics
Asst. Prof.				
Campbell, Julia	Post MSN 2002 Certificate	Rutgers University, New York		Pathophysiology Maternity Senior Synthesis
Asst. Prof.	MSN 1999 Nursing Education BSN 1988	University of Missouri - St. Louis University of Missouri - St. Louis		
Dudley, Beth	MSN 2006 Nursing Education	University of Missouri - St. Louis		Clinical Coordinator
Instructor	BSN 2000 ADN 1989	McKendree College, Labanon, IL St. Mary’s College, O’Fallon, MO		Community Health

FACULTY PROFILE: Non-Tenure Clinical Track (Cont'd)

Name	Degrees & Date	Educational Institution	Board Certification	Teaching Area
Farberman, Susan	M.Ed. 1981	Washington University St. Louis, MO	Advanced Practice Nurse (PNP)	Pediatrics
Assoc. Prof.	Certificate in Pediatric Nurse Practitioner BSN 1970	Washington University St. Louis, MO		
Frandsen, Gary	MSN 2000 Adult Health & Educator JD 1984 BSN 1977	St. Louis University University of Missouri - St. Louis		Adult Health Pharmacology Leadership
Instructor				
Kendig, Sue	JD candidate	St. Louis University Villanova University Villanova, PA	APN Women's Health Nurse Practitioner	Women's Health Health Policy
Assoc. Prof.	MSN 1993 Women's Health BS - 1991 Nursing	University of Missouri - Columbia University of Missouri - Kansas City Maryville University St. Louis, MO		
Kiel, Debbie	PhD cand. Public Health Studies MSN 1997 BSN 1977	St. Louis University St. Louis University St. Louis University	APN CNS in Comm. Hlth Nsg CNS in Adult Psych. & Mental Hlth Nsg.	Community Health Research
Assoc. Prof.				
Lee, Kathy	MSN 2003 Holistic Nursing BSN 1996	Jewish Hospital College of Nursing & Allied Health Webster College St. Louis, MO		End of life Adult Health
Ass't Prof.				
Lindquist, Sandy	PhD 1997 Nursing MSN 1984	St. Louis University St. Louis University		Fundamentals Research
Assoc. Prof.	Med-Surg Nsg M.Ed-1978 Ed. Tech BSN 1969	St. Louis University University of Missouri - St. Louis Murray State Univ. Murray, KY		Ethics Informatics Adult Health Evidence based Nursing

Name	Degrees & Date	Educational Institution	Board Certification	Teaching Area
Mantych, Elizabeth	MSN 1981 BSN 1977	St. Louis University St. Louis University		Community Health Values
Assist. Prof. Meyers, Sherry	MSN 2002	University of Missouri - St. Louis	PNP	Pediatrics Health Assessment
Assist. Prof.	BSN 1993	Maryville University		
Nelson, Jean	PhD 2001 Nursing	University of Missouri - St. Louis		Psychiatric Nsg.
Assist. . Prof.	MSN 1993 Community Mental Health MEd 1978 Counseling	Southern Illinois University University of Missouri - St. Louis		Nutrition
	BS 1961	University of Dubuque		
Recktenwald, Chris	1998 MSN BSN 1984	University of Missouri - St. Louis University of Missouri - St. Louis		Adult Health
Instructor Rowbotham, Melodie	PhD candidate in Adult Education	University of Missouri - St. Louis		Maternity Nutrition
Asst. Prof.	MSN 1999 Nurse Educator	University of Missouri - St. Louis		
	BSN 1988	Brigham Young University		
Saleska, Diane	MSN 2000	University of Missouri - St. Louis		Lab Coordinator,
	BSN 1993	Mount St. Joseph, Cincinnati		Fundamentals
Asst. Prof. Seckman, Chris	MSN - 1997 FNP	Clarkson College		Adult Health Health Assessment
Assoc. Prof.	BSN			
Sherman, Linda	MSN 1989	Southern Illinois University		Adult Health
Assist.. Prof.	BSN 1984	Maryville University		Ethics Statistics

Name	Degrees & Date	Educational Institution	Board Certification	Teaching Area
Spencer, Chris Instructor	currently working on MSN	University of Missouri - St. Louis		Nursing skills lab instructor
Sredl, Darlene Asst. Prof.	BSN 1980 PhD 2005 Nursing	Southern Illinois University University of Missouri - St. Louis		Management Nursing Theory Fundamentals
Taylor, Jennifer Instructor	MSN BSN Pursuing PhD in Nursing	Webster University Loyola University University of Missouri - St. Louis		Retention Coordinator
Whitworth Janet Instructor	MSN 2004 FNP BSN 1996 MSN	University of Missouri - St. Louis St. Louis University Webster University		Synthesis Perioperative
Young-Shields, Yakima Asst. Prof.	BSN MSN 2002 Adult NP BSN	Loyola University University of Missouri - St. Louis Webster University	APN Adult Nurse Practitioner	Health Assessment

Appendix D.3 FACULTY PROFILE, Adjunct Faculty Members

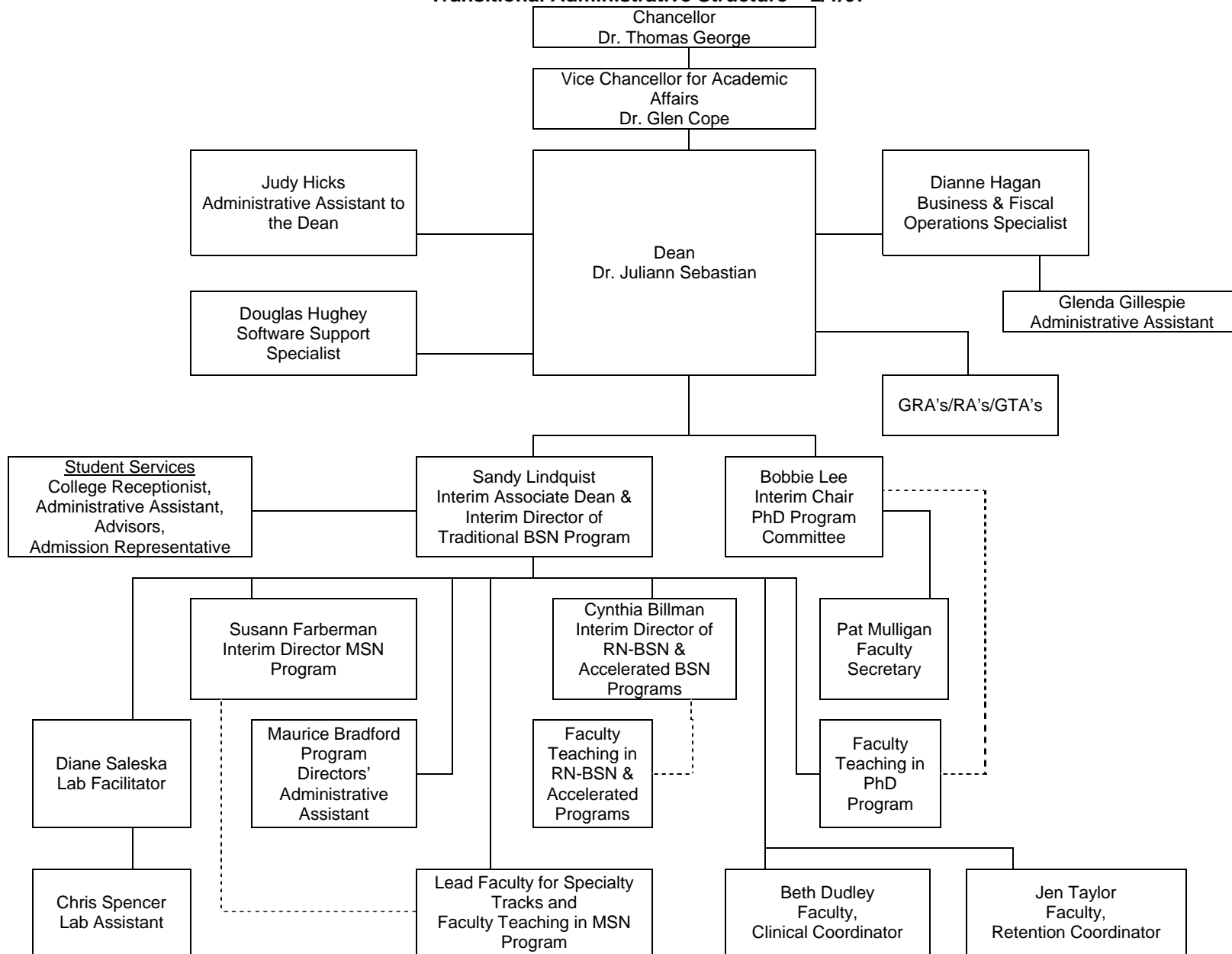
Name	Degrees/Date	Educational Institution	Board Certification	Teaching Area
Bender, Susie	MSN 1998	University of Missouri St. Louis College of Nursing	NCC WHNP	Women's Health Nurse Practitioner Clinical and Didactic
Blue, Jan	MSN 2002	University of Missouri St. Louis- College of Nursing	NCC WHNP	Women's Health Nurse Practitioner Clinical
Connell, Debra	MSN 2006	University of Missouri St. Louis		Adult Health Nursing II
DeClue, William	MBA in progress	Fontbonne College		Medical Surgical Nursing
Fischer-Messmer, Jane	MSN 2000	Webster University	NCC Certification WHNP	Women's Health Nurse Practitioner Clinical Instructor
Graham, Sheila	MSN 1985	St. Louis University		Psychiatric nursing
Grigsby, Sheila	MSN Community Health 2005	St. Louis University		Community Health Clinical Instructor
Hamilton, Margaret	MSN 1999	St. Louis University		Adult Health I
Harnacker, Lisa	MSN 2004	University of Missouri Columbia		Community Health Clinical Instructor
Heberle, Mary Catherine	MSN 2001	University of Missouri St. Louis	NAPNAP Pediatrics	Pediatric Clinical Instructor
Hirshberg, Mimi	MSN 1998	University of Missouri –St. Louis College of Nursing		Medical Surgical Nursing Clinical Instructor
Jewell, Donna	MSN 2005	University of Missouri St. Louis College of Nursing		Ethical Legal Dimensions of Nursing Practice
Magnuson, Nancy	DSN 1993	University of Alabama, Birmingham	FNP APRN-BC	Family Nurse Practitioner
McKee, Sue	PhD Adult Education 2005	University of Missouri St. Louis		Community Health Synthesis in Nursing RN-BSN Completion Program
Miller, Mary Beth	MEd 1984	Truman State		Adult Health Nursing I
Patterson, Lisa	MSN 2000	Jewish Hospital College of Nursing		Adult Health Nursing I
Prinster, Christin	MSN 2000	University of Missouri St. Louis College of Nursing	ANCC –Family Nurse	Family Nurse practitioner Clinical

Name	Degrees/Date	Educational Institution	Board Certification	Teaching Area
			Practitioner	Instructor
Ritter, Sharon	MSN 1993 In Psychiatric Mental Health Nursing	Southern Illinois University Edwardsville		Psychiatric Medical Surgical Clinical Instructor
Sherman, Jan	PhD 1999	Texas Woman's University		Nursing Informatics
Sinacore, Lisa	MSN 1984	St. Louis University		Pediatric Clinical Instructor BSN Summer Externship
Stockton, Kelly	MSN 2004	University of Missouri St. Louis College of Nursing	ANCC-Family Nurse Practitioner	Family Nurse practitioner Clinicals
Tanaka, Lanette	MSN 1984	St. Louis University		Fundamentals of Nursing Health Assessment
VanKleef, Jody	MSN 2002	University of Illinois Chicago		Nursing of Women and Childbearing Families
Wilson, Ykama	MSN 2005	University of Missouri St. Louis College of Nursing		Medical Surgical Clinicals

Appendix F

College of Nursing Transitional Organizational Structure 2006-07

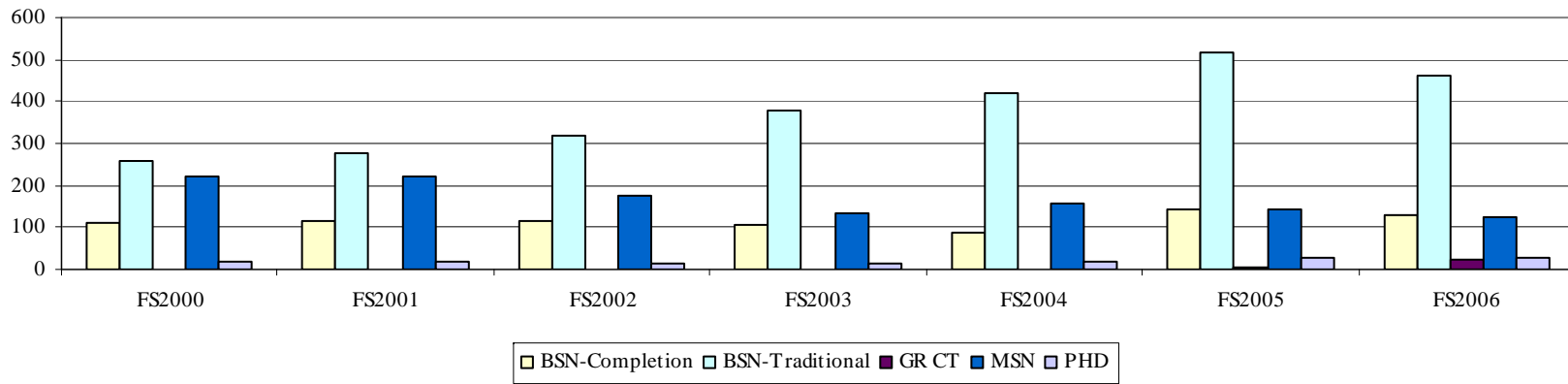
**College of Nursing at University of Missouri-St. Louis
Transitional Administrative Structure – 2/1/07**



Appendix G

Enrollment Trends, 2000-06

Nursing Fall Enrollment by Program



Appendix H
NCLEX Pass Rates

Comparison of NCLEX-RN Licensure Exam Pass Rates for the University of Missouri-St. Louis College of Nursing with Missouri BSN program averages and national averages, 2001-02 to 2005-06

	2001-02	2002-03	2003-04	2004-05	2005-06
UMSL	90.90%	97.26%	97.73%	90.83%	98.31%
State	87.11%	88.75%	88.47%	88.12%	87.71%
National	85.96%	*	86.62%	86.15%	87.52%

* data not available due to change from one accounting firm to another at the National Council of State Boards of Nursing.

Appendix I

MSN Graduates' Board Certification Pass Rates

MSN BOARD CERTIFICATION PASS RATES, 2001-2006

YEAR	ANP	FNP	PNP	WHNP
2001	100%	94%	87%	80%
2002	78%	86%	76%	100%
2003	94%	94%	100%	100%
2004	67%	91%	85%	100%
2005	83%	82%	100%	100%
2006	80%	100%	100%	Not yet available

Appendix J

Curricula for BSN, MSN, and PhD Programs

**UNIVERSITY OF MISSOURI- ST. LOUIS
COLLEGE OF NURSING**

**Appendix J.1 Comparison of Baccalaureate Program Option Curriculum Plans
Comparison of Baccalaureate Program Option Curriculum Plans**

Pre-licensure Programs			Post-licensure Program																															
Traditional		Accelerated	Completion																															
Semester I - Fall																																		
Course	Cr.																																	
English Composition I	3	Students earn an undergraduate degree & complete all the required general education and pre-requisite courses before beginning the nursing courses. Students without a baccalaureate degree must have at least 62 transferable credit hours from a Regionally accredited college or University.	Students must complete a minimum of 30 academic credit hours prior to admission.																															
College Algebra	3																																	
Human Biology	3																																	
Health Prof. Chemistry	4																																	
Nursing Orientation	0																																	
Total hours =	13																																	
Semester II - Spring																																		
Anatomy & Physiology I	4			<table border="1" style="width: 100%; border-collapse: collapse;"> <thead> <tr> <th colspan="2" style="text-align: center;">General Education Requirements</th> </tr> <tr> <th>Course</th> <th>Cr.</th> </tr> </thead> <tbody> <tr> <td>American History or Governmt</td> <td>3</td> </tr> <tr> <td>Anatomy & Physiology I & II</td> <td>6-8</td> </tr> <tr> <td>Chemistry</td> <td>4</td> </tr> <tr> <td>College Algebra (or equivalent)</td> <td>3</td> </tr> <tr> <td>Economics</td> <td>3</td> </tr> <tr> <td>English Composition</td> <td>3</td> </tr> <tr> <td>Jr. Level English Composition</td> <td>3</td> </tr> <tr> <td>General Psychology</td> <td>3</td> </tr> <tr> <td>Humanities</td> <td>9</td> </tr> <tr> <td>Microbiology</td> <td>3</td> </tr> <tr> <td>Psychology elective</td> <td>3</td> </tr> <tr> <td>Social Science elective</td> <td>3</td> </tr> <tr> <td>Total hours =</td> <td>46-48</td> </tr> </tbody> </table>	General Education Requirements		Course	Cr.	American History or Governmt	3	Anatomy & Physiology I & II	6-8	Chemistry	4	College Algebra (or equivalent)	3	Economics	3	English Composition	3	Jr. Level English Composition	3	General Psychology	3	Humanities	9	Microbiology	3	Psychology elective	3	Social Science elective	3	Total hours =	46-48
General Education Requirements																																		
Course	Cr.																																	
American History or Governmt	3																																	
Anatomy & Physiology I & II	6-8																																	
Chemistry	4																																	
College Algebra (or equivalent)	3																																	
Economics	3																																	
English Composition	3																																	
Jr. Level English Composition	3																																	
General Psychology	3																																	
Humanities	9																																	
Microbiology	3																																	
Psychology elective	3																																	
Social Science elective	3																																	
Total hours =	46-48																																	
Philosophy	3																																	
Economics	3																																	
General Psychology	3																																	
Nutrition & Health	3																																	
Total hours =	16																																	
Semester III - Fall																																		
Anatomy & Physiology II	4	Transferable credits = 62																																
Human Growth & Dev.	3																																	
Humanities	3																																	
Microbiology	3																																	
Communications	3																																	
Total hours =	16																																	
Semester IV - Spring																																		
American History	3																																	
Humanities	3																																	
Social Sciences	3																																	
Statistics	3																																	
Total hours =	12																																	
		Semester I - Summer	Cr																															
		Nursing & Health	6																															
		Health Assessment	3																															
		Students are awarded 39 lower division nursing credit hours by exam based upon verification of professional nurse licensure.																																

		Pathophysiology	3		
		Nursing & Health Informatics	3		
		Total hours =	15		Total hours = 39
Semester V - Fall	Cr	Semester II - Fall	Cr	Semester I - Fall	Cr
Nursing & Health	6	Pharmacotherapeutics	3	Dimensions of Professional Nsg	3
Health Assessment	3	Adult Health Nursing I	5	Nursing & Health Informatics	3
Pathophysiology	3	Nursing Research	3		
Pharmacotherapeutics	3	Psychiatric Nursing	4		
Jr. Level English	3				
Total hours =	18	Total hours =	15	Total hours =	6
Semester VI - Spring		Semester III - Spring		Semester II - Spring	
Adult Health Nursing I		Adult Health Nursing II	5	Health Assessment	3
Nursing Research		Women & Childbearing Family.	4	Quantitative Analysis	3
Psychiatric Mental Health Nsg		Child & Family Health Nursing	4		
Nursing & Health Informatics		Ethical & Legal Dimensions	3		
Total hours =	15	Total hours =	16	Total hours =	6
		Semester IV - Summer		Semester III - Summer	
		Community Health Nursing.	4	Values in Professional Nursing	3
		Management & Leadership	3	Jr. Level English (Writing)	3
		Senior Synthesis	5		
		Total hours =	12	Total hours =	6
Semester VII - Fall				Semester IV - Fall	
Adult Health Nursing II	5			Nursing Research	3
Women & Childbearing Family	4			Management & Leadership	3
Child & Family Health Nursing	4				
Ethical & Legal Dimensions of Nsg	3				
Total hours =	16			Total hours =	6
Semester VIII - Spring				Semester V - Spring	
Community Health Nsg.	4			Family & Community Nursing	5
Management & Leadership	3				
Senior Synthesis	5				
Nursing Elective	2-3				
Total hours =	15			Total hours =	5

				Semester VI - Summer	
				Synthesis in Nursing	5
				Total hours =	5
Total Credits for Program	120	Total Credits for Program	120	Total Credits for Program	120

**UNIVERSITY OF MISSOURI- ST. LOUIS
COLLEGE OF NURSING**

Appendix J.2 Master’s Nurse Practitioner Tracks (ANP, FNP, PNP, WHNP)

Sample Plan of Study

FULL-TIME PLAN

YEAR	FALL	WINTER	SUMMER
I	N6111 Theories (3)	N6140 Health Promotion (3)	N6739, N6741, N6743, or N6746 Health Management, Part I (5)
	N6518 Pathophysiology (3)	N6524 Assessment (3)	N6108 Values and Cultural Diversity in Advanced Nursing Practice (3)
	N6106 Policy (3)	N6509 Role (2)	
	N6112 Research (3)	N6520 Pharmacology (3)	
	Total Credit Hours 12	Total Credit Hours 11	Total Credit Hours 8
II	N6740, 6742, 6744, 6747 Health Management, Part II (5)	N6954 Internship I (2)	N6955 Internship II (2)
	N6114 Evidenced Based Nursing (3)		
	Total Credit Hours 8	Total Credit Hours 2	Total Credit Hours 2

* Students attending full-time may only start in the fall.

PART-TIME PLAN BEGINNING IN FALL

YEAR	FALL	WINTER	SUMMER
I	N6111 Theories (3)	N6108 Values & Cultural Diversity in Advanced Nursing Practice (3)	N6112 Research (3)
		N6140 Health Promotion (3)	
	N6106 Policy (3)	N6509 Role (2)	
	Total Credit Hours 6	Total Credit Hours 8	Total Credit Hours 3
II	N6114 Evidenced Based Nursing (3)	N6520 Pharmacology (3)	N6739, 6741, 6743, or 6746 Health Management, Part I (5)
	N6518 Pathophysiology (3)	N6524 Assessment (3)	
	Total Credit Hours 6	Total Credit Hours 6	Total Credit Hours 5
III	N6740, 6742, 6744, 6747 Health Management, Part II (5)	N6954 Internship I (2)	N6955 Internship II (2)
	Total Credit Hours 5	Total Credit Hours 2	Total Credit Hours 2

PART-TIME PLAN BEGINNING IN WINTER

YEAR	WINTER	SUMMER	FALL
I	N6111 Theories (3)	N6106 Policy (3)	N6112 Research (3)
	N6509 Role (2)	N6140 Health Promotion (3)	N6518 Pathophysiology (3)
	N6108 Values & Cultural Diversity in Advanced Nursing Practice (3)		
	Total Credit Hours 8	Total Credit Hours 6	Total Credit Hours 8
II	N6520 Pharmacology (3)	N6114 Evidenced Based Nursing (3)	N6740,6742, 6744, 6747 Health Management (5)
	N6524 Assessment (3)	N6739, 6741, 6743, or 6746 Health Management (5)	

	Total Credit Hours 6	Total Credit Hours 8	Total Credit Hours 5
III	N6954 Internship I (2)	N6955 Internship II (2)	
	Total Credit Hours 2	Total Credit Hours 2	

**UNIVERSITY OF MISSOURI -- ST. LOUIS
COLLEGE OF NURSING**

Appendix J. 3 Master's Nurse Educator Track

Sample Plan of Study

FULL-TIME PLAN

YEAR	FALL (odd years)	SPRING (even years)	SUMMER (even years)
	N6111 Theories (3)	N6140 Health Promotion (3)	N6114 Evidenced Based Nursing (3)
	N6112 Research (3)	N6309 Role (3)	N6105/8 Values and Cultural Diversity in Advanced Nursing Practice (3)
	N6106 Policy (3)	ED 6707 Classroom Measurement and Evaluation (3) <i>OR ED 6709</i> Educational & Psychological Measurement (3)	
	Total Credit Hours 9	Total Credit Hours 9	Total Credit Hours 6
II	FALL (even years)	SPRING (odd years)	SUMMER (odd years)
	NS6320 Program and Curriculum Development (3)	N 6952 Synthesis Practicum (3)	
	ED6410 Adult Learner (3)		
	NS6321 Instructional Strategies (3)		
	Total Credit Hours 9	Total Credit Hours 3	Total Program Credit Hours 36

PART-TIME PLAN

YEAR	FALL (even years)	SPRING (odd years)	SUMMER (odd years)
I	N6111 Theories (3)	N6140 Health Promotion (3)	
		N6105/8 Values and Cultural Diversity in Advanced Nursing (3)	
	N6106 Policy (3)		
	Total Credit Hours 6	Total Credit Hours 6	Total Credit Hours
II	FALL (odd years)	SPRING (even years)	SUMMER (even years)
	ED6410 The Adult Learner (3)	N6309 Role of the Nurse Educator (3)	N6114 Evidenced Based Nursing (3)
	N6112 Research (3) --(could take fall or summer)	ED6707 Classroom Measurement and Evaluation (3) <i>OR ED6709</i> Educational & Psychological Measurement (3)	
	Total Credit Hours 6	Total Credit Hours 6	Total Credit Hours 3
III	FALL (even years)	SPRING (odd years)	SUMMER (odd years)
	NS6321 Instructional Strategies (3)	N6952 Synthesis Practicum (3)	
	NS6320 Program and Curriculum Development (3)		

	Total Credit Hours	6	Total Credit Hours	3	Total
					36

**UNIVERSITY OF MISSOURI -- ST. LOUIS
COLLEGE OF NURSING**

Appendix J.4 Master's Nurse Leader Track

Sample Plan of Study

FULL-TIME PLAN

YEAR	FALL (even years)	SPRING (odd years)	SUMMER (odd years)
I	N6111 Theories (3)	N6140 Health Promotion (3)	One Elective (N6870, N6875, Management 5600, Or MDHI) (3) OR N 6114 Evidenced Based Nursing (3)
	N6112 Research (3)	N6409 NL Role of the Nurse Leader (3)	N6108/5 Values and Cultural Diversity in Advanced Nursing Practice (3)
	N6106 Policy (3)	N6426 Health Resources Management (3)	
	Total Credit Hours 9	Total Credit Hours 9	Total Credit Hours 6
II	FALL (odd years)	SPRING (even years)	SUMMER (even years)
	N6428 Theory and Practice in Nursing Leadership (3)	N6952 Synthesis Practicum (3)	
	N6425 Managed Care Services (3)		
	One Elective (N6870, N6875, Management 5600, Or MDHI) (3) OR N 6114 Evidenced Based Nursing (3)		
	Total Credit Hours 9	Total Credit Hours 3	

PART-TIME PLAN

YEAR	FALL (odd years)	SPRING (even years)	SUMMER (even years)
I	N6111 Theories (3)	N 6140 Health Promotion (3)	N 6112 Research(3)
	N6106 Policy (3)	N6108/5 Values and Cultural Diversity in Advanced Nursing Practice (3)	
	Total Credit Hours 6	Total Credit Hours 6	Total Credit Hours 3
II	FALL (even years)	SPRING (odd years)	SUMMER (odd years)
	One Elective (N6870, N6875, Management 5600, Or MDHI) (3) OR N6114 Evidenced Based Nursing (3)	N 6426 Health Resources Management (3)	One Elective (N6870, N6875, Management 460, Or MDHI) (3) OR N6114 Evidenced Based Nursing (3)

		N6409 NL Role of the Nurse Administrator (3)	
	Total Credit Hours 3	Total Credit Hours 6	Total Credit Hours 3
III	FALL (odd years)	SPRING (even years)	SUMMER (even years)
	N 6428 Theory and Practice in Nursing Leadership (3)	N 6952 Synthesis Practicum (3)	
	N 6425 Managed Care Services (3)		
	Total Credit Hours 6	Total Credit Hours 3	Total Program Hours 36

**University of Missouri St. Louis
College of Nursing
Appendix J. 5 PhD Sample Plans of Study**

Revised June 9, 2005 Sample Full-Time Study Program for Students on Post-Master Track (Minimum Total 45 Hours) *Other courses may be needed to strengthen program of research		
Summer	Fall	Spring
Year 1		
7488 Qualitative Methods in Nursing Research (3) Statistics (3) outside college 6 hours	7481 Development of Nursing Science and Theory (3) 7485 Quantitative Design and Methods in Nursing Research (3) 6 hours	7491 Advanced Nursing Theory Development and Validation (3) 7490 Advanced Quantitative Design, Methods and, Analysis of Nursing Data (3) 6 hours - (Residency year-may take 15 hours over the year)
Year 2		
7492 Advanced Quantitative Measurement and Analysis of Nursing Data (3) 3 hours	Cognate (3) Cognate (3) 6 hours	7482 Health Promotion and Protection (3) or 7483 Health Restoration and Support (3) or 7484 Health Care Systems (3) Cognate (3) 6 hours
Year 3		
	7499 Dissertation Research (6) 6 hours	7499 Dissertation Research (6) 6 hours

**PhD Curriculum Overview
June 20, 2005**

Revised June 9, 2005 Sample Part -Time Study Program for Students on Post-Master Track (Minimum Total 45 Hours) *Other courses may be needed to strengthen program of research

Summer	Fall	Spring
Year 1		
Statistics (3) outside college 3 hours	7481 Development of Nursing Science and Theory (3) 3 hours	7491 Advanced Nursing Theory Development and Validation (3) 3 hours
Year 2		
7488 Qualitative Methods in Nursing Research (3) 3 hours	7485 Quantitative Design and Methods in Nursing Research (3) Cognate (3) 6 hours	7490 Advanced Quantitative Design, Methods and, Analysis of Nursing Data (3) 7482 Health Promotion and Protection (3) or 7483 Health Restoration and Support (3) or 7484 Health Care Systems (3) 6 hours (Residency year-may take 15 hours over the year)
Year 3		
7492 Advanced Quantitative Measurement and Analysis of Nursing Data (3) 3 hours	Cognate (3) 3 hours	Cognate (3) 3 hours
Year 4		
7499 Dissertation Research (3) 3 hours	7499 Dissertation Research (3) 3 hours	7499 Dissertation Research (6) 6 hours

Revised June 9, 2005 Sample Full-Time Study Program for Students on Post-BSN Track Option (Minimum Total 72 Hours) *Other courses may be needed to strengthen program of research		
Summer	Fall	Spring
Year 1		
	6111 Theoretical Foundations in Nursing (3) 6320 Nursing Program and Curriculum Development (3) (even years) 6112 Nursing Research Methods (3) 9 hours	6114 Evidenced Based Nursing (3) Graduate statistic outside nursing (3) Elective (3) Recommend statistics outside nursing 9 hours
Year 2		
6106 Policy, Organization and Financing in Health Care (3) 3 hours	6321 Instructional Strategies in Nursing Education (3) (even years) 7485 Quantitative Design and Methods in Nursing Research (3) Elective recommend Cognate (3) 9 hours	6952 Synthesis Practicum (3) Statistics outside college (3) 7490 Advanced Quantitative Design, Methods and, Analysis of Nursing Data (3) MSN may be awarded this semester 9 hours
Year 3		
7488 Qualitative Methods in Nursing Research (3) 7492 Advanced Quantitative Measurement and Analysis of Nursing Data (3) 6 hours	7481 Development of Nursing Science and Theory (3) Cognate (3) 6 hours	7491 Advanced Nursing Theory Development and Validation (3) 7482 Health Promotion and Protection (3) or 7483 Health Restoration and Support (3) or 7484 Health Care Systems (3) Cognate (3) 9 hours – (Residency year-may take 15 hours over the year)
Year 4		
	7499 Dissertation Research (6) 6 hours	7499 Dissertation Research (6) 6 hours

Note: Doctoral level courses taken prior to the MSN may be counted either at the MSN level or at the PhD level. At the MSN level courses appear on the Programs for Masters (M-1) form and at candidacy, all courses post BSN appear on Application for Candidacy (D-3) form.

**Revised June 9, 2005 Sample Part -Time Study Program for Students on Post-BSN Track Option
(Minimum Total 72 Hours) *Other courses may be needed to strengthen program of research**

Summer	Fall	Spring
Year 1		
Statistics outside college (3) 3 hours	6111 Theoretical Foundations in Nursing (3) 6320 Nursing Program and Curriculum Development (3) (even years) 6 hours	Graduate statistic outside nursing (3) Elective (3) Recommend statistics outside nursing 6 hours
Year 2		
6106 Policy, Organization and Financing in Health Care (3) 3 hours	6112 Nursing Research Methods (3) 6321 Instructional Strategies in Nursing Education (3) (even years) 6 hours	6114 Evidenced Based Nursing (3) 6952 Synthesis Practicum (3) 6 hours MSN may be awarded this semester
Year 3		
Statistics outside college (3) 3 hours	7481 Development of Nursing Science and Theory (3) 7485 Quantitative Design and Methods in Nursing Research (3) 6 hours	7491 Advanced Nursing Theory Development and Validation (3) 7490 Advanced Quantitative Design, Methods and, Analysis of Nursing Data (3) 6 hours(Residency year-may take 15 hours over the year
Year 4		
7488 Qualitative Methods in Nursing Research (3) 7492 Advanced Quantitative Measurement and Analysis of Nursing Data (3) 6 hours	Cognate (3) Cognate (3) 6 hours	7482 Health Promotion and Protection (3) or 7483 Health Restoration and Support (3) or 7484 Health Care Systems (3) 3 hours
Year 5		
7499 Dissertation Research (3) 3 hours	7499 Dissertation Research (3) 3 hours	7499 Dissertation Research (6) 6 hours

Note: Doctoral level courses taken prior to the MSN may be counted either at the MSN level or at the PhD level. At the MSN level courses appear on the Programs for Masters (M-1) form and at candidacy, all courses post BSN appear on Application for Candidacy (D-3) form.

minimum of 45 hours to graduate)

Appendix K
External Grant Funds

**Appendix K.1 University of Missouri System
Colleges of Nursing – Extramural Funding by Fiscal Year**

Campus	FY03		FY 04		FY 05		FY 06	
	Number	Total \$\$	Number	Total \$\$	Number	Total \$\$	Number	Total \$\$
Columbia	18	3,439,478	30	3,946,519	25	3,693,328	20	3,944,319
Kansas City	9	894,252	8	1,073,728	12	1,584,638	7	528,554
St Louis	10	345,057	2	116,037	4	390,757	1	59,971

**Appendix K.2 University of Missouri – St Louis
Intramural Funding by College/School and Fiscal Year**

UMSL College/School		FY00	FY 01	FY02	FY03	FY04	FY05	FY06
Arts & Sciences	<i>Research Award</i>	229,107	181,287	117,013	194,442	142,987	148,537	169,743
	<i>Research Board</i>	198,080	356,897	209,747	171,156	214,265	265,590	406,135
A&S/ Education	<i>Research Award</i>							
	<i>Research Board</i>				27,986			
A&S/ PPA	<i>Research Award</i>							
	<i>Research Board</i>							
Business Administration	<i>Research Award</i>		12,500			34,490	12,000	
	<i>Research Board</i>		24,230					
Education	<i>Research Award</i>	8,624	16,307	3,225		12,474	8,435	
	<i>Research Board</i>							
Fine Arts & Communication	<i>Research Award</i>							
	<i>Research Board</i>							
Graduate	<i>Research Award</i>							
	<i>Research Board</i>							
Nursing	<i>Research Award</i>					12,486	12,498	
	<i>Research Board</i>	38,856	43,756					
Optometry	<i>Research Award</i>			8,912			6,000	
	<i>Research Board</i>			30,000				

Appendix L

Publications and Presentations

**University of Missouri – St Louis
College of Nursing**

Appendix L.1 REFEREED PUBLICATIONS (2000 – Current)

- Amawankaa, L. and **Taliaferro, D.** (in press). Acts of acknowledgements. *Journal of Black Nurses*.
- Bachman J.A.**, Brennan P.F. & Patrick T.B. (2003), Design and evaluation of SchoolhealthLink, a Web-based health resource. *Journal of School Nursing*, 19(6) 351-357. (R)
- Bachman JA**, Brennan PF, Patrick TB, Cole M. (2000). A World Wide Web-based health resource: Survey of Missouri school nurses to determine priority health information resources for SchoolhealthLink, *Journal of School Nursing*, 16(1), 24-29. (R)
- Borcherding, K.E.**, Smith-Battle, L., & Schneider, J. (2005, Aug) Preliminary Investigation of the Grandparent Support Scale for Teenage Mothers,” *Journal of Family Nursing*, 11(3):289-306. (R)
- Calvert, W. J.** (2002). Neighborhood disorder, individual protective factors and the risk of adolescent delinquency. *The Association of Black Nursing Faculty Journal*, 13, 127 – 135. (R)
- Christman, S.K., **Fish, A.F.**, Bernhard, L., Frid, D.J., Smith, B.A., & Mitchell, L. (2000). Continuous handrail support, oxygen uptake, and heart rate in women during submaximal step treadmill exercise. *Research in Nursing and Health*, 23(1), 35-42.
- Cowling, R. and **Taliaferro, D.** (2004) Emergence of a Healing-Caring Perspective: Contemporary Conceptual and Theoretical Directions. *Journal of Theory Construction and Testing*, 8(2), 54-60.
- Dileo, H., Reiter, R., and **Taliaferro, D.** (2002). Chronobiology, melatonin and sleep in infants and children. *Pediatric Nursing*, 28, (1), 35-39.
- DiLeo, H., **Taliaferro, D.H.**, & Lewis, S.L. (2002, April 15). Development of the toddler and preschool sleep problems screening tool. *Sleep*, 25 (Supplement), 127.
- DiLeo, H. & **Taliaferro, D.H.** (2002, April 15). Salivary melatonin and temperature as biophysical factors of sleep disturbance in young children: A pilot study. *Sleep*, 25 (Supplement), 127.

- Emery, C. F., Frid D. J., Engebretson, T. O. , Alonzo, A. A., **Fish, A.** Ferketich, A. K., Reynolds, N. R. , Dujardin, J. P., Homan, J. E., & Stern, S.L. (2004) Gender differences in quality of life among cardiac patients. *Psychosomatic Medicine*. 66(2):190-197.
- Garzon, D.L.** (2007) Diagnosis and management of childhood depression in an era of black box warnings., *ADVANCE for Nurse Practitioners*, 15(2), p. 35-44. (R)
- Garzon, D.L.** (2005) Contributing factor to preschool unintentional injury, *Journal of Pediatric Nursing*, Vol. 20, pp. 441-447. (R)
- Garzon, D.L., Lee, R.K.;** & Homan, S. There's No Place Like Home: A Preliminary Study of Toddler Unintentional Injury, *Journal of Pediatric Nursing*. (in press)
- Glatt, K., **Garzon, D.** & Popvic, J. (2005). Congenital adrenal hyperplasia due to 21 hydroxylase deficiency. *Journal for Specialists in Pediatric Nursing*, Vol. 10(3), pp. 104-114, 2005.
- Hsueh, K.**, Phillips, L., Cheng, W. Y., & Picot, S. F. (2005). Assessing Cross-cultural Equivalence Through Confirmatory Factor Analysis. *Western Journal of Nursing Research*, 27(6), 755-771.
- Jenkins, R. L.**, & McSweeney, M. (2000). Assessing elderly patients with congestive heart failure via in-home interactive telecommunication, *Journal Gerontology Nursing*, 27(1),21-27. (R)
- Jenkins, R. L., Sredl, D., Hsueh, K.** & Ding, Cody. (in press, 2007). Evidence-Based Nursing Process (EBNP) Consumer Culture Attribution Identity: A Message-based persuasion Strategy Study among Nurse Executives in the United States of America. *Journal of Medical Sciences*.
- Jenkins, R.L.** & White, P. (2001). Telehealth advancing nursing practice. *Nursing Outlook*, 49(29)100-105. (R)
- Ketefian S, Bays C, Draucker C, Herrick L, & **Lee RK** (2002, September). *Guidelines for Scientific Integrity, Second Edition*. Chicago: Midwest Nursing Research Society. The Association, September, 2002.
- Kresnow M., Ikeda R.M., Mercy J.A., Powell K.E., Potter L.B., Simon T.R., **Lee R.K.**, & Frankowski R.F. (2001). An unmatched case-control study of nearly lethal suicide attempts in Houston, Texas: Research methods and measurements. *Suicide and Life Threatening Behavior*, Vol. 32(Supp):7-20.
- Lee R.K.**, Thompson V.L., & Mechanic M.B.. Violence against Women: A View of Pandora's Box. *American Journal Public Health*. 2002;92:530-4.

- Mechanic M.B., Thompson V.L.S., Shields N, **Lee R.K.**, Hirshberger J., Mastnak J., & O'Connor S. (2003). *Violence against women programming: Report of what is in use*. Charleston, SC: National Violence Against Women Prevention Research Center. (monograph)
- Mercy J.A., Kresnow M., O'Carroll P.W., **Lee R.K.**, Powell K.E., Potter L.B., Swann A.C., Frankowski R.F. & Bayer T.L. (2001). Is suicide contagious? A study of the relationship between exposure to the suicidal behavior of others and nearly lethal suicide attempts. *American Journal Epidemiology*, Vol. 154:120-7.
- O'Carroll P.W., Crosby A., Mercy J.A., **Lee R.K.**, & Simon T.R. (2001). Interviewing suicide "decedents": A fourth strategy for risk factor assessment. *Suicide and Life Threatening Behavior*, Vol. 32(Supp):3-6.
- Potter L., Kresnow, M.J., Powell, K., Simon, R., Mercy J.A., **Lee, R.K.**, Frankowski R.F., Swann A.C., & Bayer T (2001). Influence of geographic mobility on nearly lethal suicide attempts. *Suicide and Life Threatening Behavior*, Vol. 32(Supp):42-8.
- Powell K.E., Kresnow, M., Mercy J.A., Potter L.B., Swann A.C., Frankowski, R.F. **Lee R.K.**, & Bayer T.L. (2001). Alcohol consumption and nearly lethal suicide attempts. *Suicide and Life Threatening Behavior*, Vol. 32(Supp):30-41.
- Ruchala, P.L., Metheny, N., Essenpreis, H., & **Borcherding, K.E.**, (2002, Sept-Oct), Current practice in oxytocin dilution and fluid administration for induction of labor, *Journal of Obstetric, Gynecologic, and Neonatal Nursing* 31(5): 545-50. (R)
- Schachman K.A., **Lee R.K.** & Lederman R.P. (2004) Baby boot camp: Facilitating Maternal Role Adaptation in military wives. *Nursing Research*, Vol. 53:107-115. (R)
- Slaten, E., Amodei, N., Ingmundson, P., Salazar, N., Martinez, C., & **Taliaferro, D.** (2000 December). Training mental health professionals on ethical issues and HIV/AIDS. *Sociological Practice: A Journal of Clinical and Applied Sociology*, 2(4), 303 – 314.
- Taliaferro, D.** (2001 Summer). Alternative therapies: What's the fuss? *Reflective Practice*, 4 (4), 1 –3.
- Taliaferro, D.** (2005). Hope and Dispair in Academia: Part 2. *International Journal for Human Caring*, 9(2), 86.
- Taliaferro, D.** (2001). Melatonin and Cortisol Decreased in HIV Biorhythms. *Journal of the Association for Nurses in AIDS Care*, 6 (4) Supplement, 37.

- Taliaferro, D.** (2000, September). Melatonin and the Immune System, *Holistic Nursing Update*, 1(9). 1 – 4.
- Taliaferro, D.** (2001, September). The 12th Man. *Care of the Dying, Supportive Voice*, 7(3), 3 –5.
- Taliaferro, D.** (2000, February). Therapeutic touch in pain and anxiety. *Holistic Nursing Update*, 1(2), 9 – 11.
- Taliaferro, D.** (in press). The Use of Photovoice as a Methodology for Research. *International Journal for Human Caring*, 9(2), 66.
- Taliaferro, D. (in press). Women of Color and HIV, *Journal of Cultural Diversity*.
- Taliaferro, D.,** Wyglendowski, C. & DiLeo, H. (2003). Objective and Subjective Correlates of Sleep in HIV. *Sleep*, 26, (Supplement), 871.
- Williams, G. B. and **Taliaferro, D.** (2001). From Nightingale to Beyond 2000: Philosophical Issues related to Caring. *The International Journal for Human Caring*, 5(2), 15-20.

**University of Missouri – St Louis
College of Nursing**

Appendix L.2 PRESENTATIONS (2000 – Current)

Astroth, K.S., Burton, M.C., McLane, S.L., Heulskamp, H., Broesamle, T.C., & **Fish, A.F.** (2001, October). *Effects of steptreadmill exercise training on resting blood pressure in women with unmedicated hypertension*. Saint Louis University School of Nursing 28th Annual Research Conference, St. Louis, MO. (Presentation, R)

Astroth, K., & **Fish, A. F.** (2006, March). *Healthy lifestyles of adults in a work setting*. Midwest Nursing Research Society. (Poster, R)

Astroth, K., & **Fish, A. F.** (2002, April). *Measuring exercise stage of change using three instruments and an interview*. 4th Annual University of Missouri Nursing Research Conference, Columbia, MO. (Poster)

Astroth, K., & **Fish, A. F.** (2003, April). *Psychometric issues related to measurement of exercise stage of change*. 5th Annual University of Missouri Nursing Research Conference, Columbia, MO. (Poster)

Astroth, K.S., **Fish, A.**, & Daley, L. (2002, March). *Exercise stage of change classification using five instruments and interview*. 26th Annual Midwest Nursing Research Society Conference, Chicago, IL. (Presentation, R)

Astroth, K. S, **Fish, A. F.**, **Hsueh, K.**, & **Bachman, J.H.** (2007, March). Exercise Stage of Change Classification: A Comparison of Three Instruments and an Interview. Midwest Nursing Research Society Innovative Technology: Pioneering Pathways to Health, Omaha, NE. (Presentation, R)

Bachman J.A., Brennan P.F., & Patrick T.B. (2000, November). Evaluating SchoolhhealthLink: A WWW health information resource for Missouri school nurses. AMIA 2000 Annual Symposium: Transforming Health Care Though Informatics. (Poster, R)

Bachman, J.A., Rackers, D., Cole, M., **Hsueh, K.H.** (2005, April). Evaluation of school nurse online training to manage children with diabetes in school. Midwest Nursing Research Society Advancing the Clinical Research Enterprise: Translation and Dissemination. 29th Annual Research Conference. Cincinnati, Ohio, (Presentation/Poster?, R)

Bachman, J.A., Travis, L.L., **Fish, A.** (2005) BSN to PhD, and Accelerated Option. American Association of Colleges of Nursing 2005 Doctoral Education Conference. San Diego, California. (Poster, R)

Borcherding, K.E. (2005, April), "Coping in Healthy Pregnant Women," Midwest

- Nursing Research Society Conference, Cincinnati, OH. (Poster, R)
- Borcherding, K.E.**, SmithBattle, L., & Schneider, J. (2004, February), "A Preliminary Investigation of the Grandparent Support Scale for Teenage Mothers," Midwest Nursing Research Society Conference, Saint Louis, MO. (Presentation, R)
- Burton, M., & **Fish, A. F.** (2002, April). *Effect of sodium reduction on blood pressure and urinary sodium excretion.* 4th Annual University of Missouri Nursing Research Conference, Columbia, MO. (Poster)
- Burton, M. & **Fish, A. F.** (2006, March). *The relationship of gender to treatment and outcomes in hospitalized heart failure patients.* Midwest Nursing Research Society. (Poster, R)
- Calvert, W.J.**, (2006, October), "Adolescent health-compromising behaviors and alcohol use," poster presentation at National Congress on the state of the Science of Nursing Research. Improving Life: Development and Dissemination of Nursing Innovation, Washington, DC. (R)
- Calvert, W.J.**, (2006, March) "Adolescent Risky Behaviors and Alcohol Use," 30th Annual Research Conference Midwest Nursing Research Society, Milwaukee, WI. (Poster, R)
- Calvert, W.J.**, (2006, March) "Alcohol Use, Cigarette Smoking, and Adolescent and Maternal Religiosity/Spirituality," poster presentation at Sixth Annual Guze Symposium on Alcoholism Midwest Alcoholism Research Center, Washington University in St. Louis Department of Psychiatry, St. Louis, MO.
- Calvert, W.J.** (2005, March), "Comorbidity of Alcohol Use, Delinquency, Illicit Drug Use, and Cigarette Smoking in a Group of Adolescent Female Twins," Fifth Guze Symposium on Alcoholism: Alcoholism and Comorbidity Washington University in St. Louis School of Medicine Department of Psychiatry, St. Louis, MO. (Poster,)
- Calvert, W.J.**, (2006, June) "The Effect of Paternal Alcoholism on Risky Behaviors in Adolescents," poster presentation at Research Society on Alcoholism, Baltimore, MD.
- Calvert, W.J.** (2004, June), "The Mitigating Role of Individual- and Peer Related Protective Factors in Female Adolescent Alcohol Consumption and Alcohol-Related Problems," Research Society on Alcoholism, Vancouver, British Columbia, Canada. (Poster,)
- Calvert, W.J.** (2005), "The Protective Effect of Religiosity on Adolescent Antisocial Behaviors," oral presentation and discussant Race, Ethnicity, and Gender Differences in Developmental Predictors of Antisocial Behavior, sponsored by

National Consortium on Violence Research, and the Department of Sociology and Criminal Justice of Saint Louis University, St. Louis, MO.

Calvert, W.J. (2004, June), "The Protective Effect of Religiosity on the Use of Illicit Drugs in a Group of Ethnically Diverse Adolescent Female Twins," College on Problems of Drug Dependence, San Juan, Puerto Rico. (Poster,)

Calvert, W.J.(2004, April), "Protective Factors and Delinquency in the Missouri Adolescent Female Twin Study," Third National Conference on Child & Adolescents, Youth & Violence, University of Maryland School of Nursing, Baltimore, MD. (Poster,)

Calvert, W.J. (2005, June), "The Relationship of Female Adolescent Alcohol Use to Marijuana Use, Serious Delinquency, and Minor Delinquency," poster presentation at Research Society on Alcoholism, Santa Barbara, CA.

Calvert, W.J. (2005, March), "Religiosity and Marijuana Use in a Group of Adolescent Females," Addiction and Spirituality Conference, Indiana State University, Terre Haute, IN. (Poster,)

Calvert, W.J. (2006, September), "So Help Me God (II): Substance Abuse, Religion and Spirituality," National Center on Addiction and Substance Abuse at Columbia University, New York, NY. (Presentation,)

Chiaranai, C. & **Taliaferro, D.** (2004). Quality of Life in HIV+ Individuals: A Pilot Study. *Proceedings: Graduate Research Symposium, VCU, Richmond, VA.*

Chiaranai, C. & **Taliaferro, D.** (2004). Quality of Life in HIV+ Individuals: A Pilot Study. *Proceedings: Southern Nursing Research Society, Louisville, KY.*

Chiaranai, C, Salyer, J, & **Taliaferro, D.** (2005). Self Care and Quality of Life in Patients with Heart Failure. *Proceedings: Southern Nursing Research Society, Atlanta, GA*

Dileo, H., **Taliaferro, D.H.**, & Lewis, S.L. (2002, June). Development of the toddler and preschool sleep problems screening tool. *Proceedings: Associated Professional Sleep Societies, Seattle, WA.*

Dileo, H. & **Taliaferro, D.** (2000). Melatonin and Sleep/Wake Cycles in HIV. *Proceedings: Southern Nursing Research Society, Little Rock, AK.*

Dileo, H. & **Taliaferro, D.H.** (2002, June). Salivary melatonin and temperature as biophysical factors of sleep disturbance in young children: A pilot study. *Proceedings: Associated Professional Sleep Societies, Seattle, WA.*

- Dileo, H. & **Taliaferro, D.** (2002). The Toddler and Preschool Sleep Problems Screening Tool. *Proceedings: Southern Nursing Research Conference*. San Antonio, TX.
- Duncan, A.E., **Calvert, W.J.**, Lewis, C.E., & Bucholz, K.K. (2006, March), "Race, Tobacco and Alcohol in a High-Risk Family Study," Sixth Annual Guze Symposium on Alcoholism Midwest Alcoholism Research Center, Washington University in St. Louis Department of Psychiatry, St. Louis, MO. (Poster,)
- Durbin, C., & **Fish, A. F.** (2002, September). *Decision-making and advance directive completion*. Southern Illinois University Edwardsville School of Nursing Annual Gateway Martha Welch Nursing Conference, Edwardsville, IL. (Poster,)
- Durbin, C., & **Fish, A. F.** (2007, March). *Healthcare Decision-Making in Community-Dwelling Adults*. Midwest Nursing Research Society, Omaha, NE. (Poster, R)
- Emery, C.F, Frid, D.J., Engebretson, T.O., Alonzo, A.A., **Fish, A. F.**, Ferketich, A.K., Reynolds, N.R., Dujardin, J.-P., Homan, J.E., & Stern, S.L. (2002, August). *Gender differences in quality of life among cardiac patients*. Annual meeting of the American Psychological Association, Chicago, IL. (Presentation, R)
- Fish, A. F.** (2005, March). *Evidence-based care guidelines for prevention, detection, evaluation and treatment of high blood pressure: JNC7*. Barnes Jewish Hospital Nursing Grand Rounds. (Invited presentation)
- Fish, A.** (2000, April). *Exercise management in the work place*. American Heart Association, St. Louis, MO. (Invited presentation,)
- Fish, A. F.** (2006, February) *Experiences and strategies for adding video and other copyrighted material*. Getting the Message Across: Making the Most of Oral and Powerpoint Presentations. Conversation about Teaching and Technology sponsored by the Center for Teaching and Learning. (Invited presentation and panel member)
- Fish, A.** (2002, July). *Gaining a better clinical understanding of readiness to exercise through research*. Barnes Jewish Hospital Research Council Lecture Series. (Invited presentation)
- Fish, A. F.** (2003, September). *Gaining a better understanding of recently-released clinical hypertension guidelines and outcomes*. Barnes Jewish Hospital Research Council Lecture Series. (Invited presentation)
- Fish, A.** (2000, May). *Gaining a better clinical understanding through research*. Barnes Jewish Hospital-Research Council Lecture Series. BJH continuing education for nurses. (Invited presentation)

- Fish, A. F.** (2002, March). *IRB policies and procedures*. University of Missouri Saint Louis, St. Louis, MO. (Presentation)
- Fish, A. F.** (2002, November). *Non-traditional approach using the concept of transition in a nursing research course*. Inaugural Focus on Teaching and Technology Conference, St. Louis, MO. (Presentation)
- Fish, A. F.** (2004, December) *Transitioning a quantitative research methods course to a web-based centra course*. On-Line Teaching Tips in Real-Time or Any Time: Conversation about Teaching and Technology sponsored by the Center for Teaching and Learning and Information Technology Services. (Invited presentation and panel)
- Fish, A. F., Shelton, A., Peng, N., Harrison, R., & Hsueh, K.** (2006, April). *PhD student and faculty experiences developing multidisciplinary mentoring research relationships*. 8th Annual University of Missouri Nursing Research Conference, Columbia, MO. (Panel member)
- Garzon, D.** (2005, April). Depression in children and adolescents: Characteristics, assessment, treatment and prevention. National Association of Pediatric Nurse Practitioners 26th annual conference on pediatric health care, in Phoenix, AZ.
- Garzon, D.** (2006, April). Do Attention Deficit Disorder and Oppositional Defiant Disorder influence preschool unintentional injury risk? 30th Annual Midwest Nursing Research Society Research Conference, in Milwaukee, WI. (Presentation, R)
- Garzon, D.** (2005, April). Identification of children at risk for injury: Prevention of sports injuries and beyond. National Association of Pediatric Nurse Practitioners 26th annual conference on pediatric health care, Phoenix, AZ.
- Garzon, D.** (2005, March). The influence of attention deficit disorder, oppositional defiant disorder, and risk-taking behavior on preschool unintentional injury. Annual Meeting of the NIMH Training Programs in Psychiatric Epidemiology and Biostatistics, in New York City, NY. (Presentation,R)
- Garzon, D.** (2003, June). Pediatric home injury: Incidence, exposures and the influence of parental supervision. American Academy of Nurse Practitioners 18th National Conference, in Anaheim, CA. (Presentation, R)
- Garzon, D.** (2002, March). Pediatric Home Injury: Incidence, Exposure and the Influence of Parental Supervision. Midwest Nursing Research Society 2002 Annual Research Conference. (Poster, data based, R)
- Garzon, D.** (2003, April) Pediatric Home Injury: Incidence, Exposures and the

- Influence of Parental Supervision. National Association of Pediatric Nurse Practitioners 24th annual nursing conference on pediatric primary care, in Orlando, FL. (Poster, data based, R)
- Garzon, D. & Lee, R.K.** (2003, November). Pediatric Home Injury: Incidence, exposure and the influence of parental supervision (poster presentation). American Public Health Association 131st Annual Meeting and Exposition, in San Francisco, CA. (Poster, R)
- Gayer, D., Buford, T., & **Garzon, D.** (2003, April). Using web-based instruction to Enhance PNP education. National Organization of Nurse Practitioner Faculties 29th Annual Meeting. (Poster, R)
- Hsueh, K.** (2004). Chinese Picot Caregiver Rewards Scale using the ACT-BRAVE Cross-cultural Equivalence Framework. State of the Science in Nursing Research Conference, Council for the Advancement of Nursing Science. Washington D. C. (poster, R)
- Hsueh, K.** (2006, October) The Effects of Filial Values on Health Status Among Chinese Caregivers in the US. Podium presentation at the 2006 State of the Science in Nursing Research, Council for the Advancement of Nursing Science, Washington D. C. (Presentation, data based, R)
- Hsueh, K.** (2003, April). Family Caregiving Experience among Chinese Caregivers in the United States. 36th Annual Communicating Research Conference/17th Annual Western Institute of Nursing Assembly, Scottsdale, AZ. (R)
- Hsueh, K.** (2004, September). A Practical Guide for Cultural Competent Care. Panel Presentation. First Annual Missouri Geriatric Training Series, National Association of Social Work-Missouri Chapter. St. Louis. (R).
- Hsueh, K.** (2006, October) Understanding Filial Acculturation Through Open-Ended Inquiry. State of the Science in Nursing Research, Council for the Advancement of Nursing Science, Washington D. C. (Presentation, data based, R)
- Hsueh, K.** (2005). Theoretical Model Building Through Empirical Work. Midwest Nursing Research Society annual conference (R).
- Jenkins, R.L.** (2003, November) Infant Touch what mothers' feel and believe, what babies tell us. Sigma Theta Tau International Annual Meeting, Toronto, CA. (R)
- Jenkins, R.L. (2006)** Visiting Scholar, Taiwan National Defense Medical Center. Lecture series on infant touch, nursing, interventions for healthy family outcomes, telehealth, concept analysis, instrument development application, reliability and validity, grant writing, writing scientific papers, evidence based nursing practice. (Invited, international presentations)

- Jenkins, R.L.** (2004). Telehealth Monitoring and Infusion therapy, International Infusion therapy Conference, November, Palm Springs, CA. (Presentation, R)
- Jenkins, R.L.** (2004, November). Telehealth Monitoring and Infusion Therapy, Infusion Nurses Society Fall National Academy. (Presentation, R)
- Johnson, T. & **Taliaferro, D.** (2000). Temperature and Sleep Circadianicity in AIDS. *Proceedings: Southern Nursing Research Society*, Little Rock, AK.
- Lee, R.K.** (2001, May) Violence and Minority Women: A View of Pandora's Box. Eliminating Health Disparities Among Minority Women: Policy, Intervention, and Research Conference, University of Texas Medical Branch and Office of Minority Health, National Institutes of Health, Galveston, Texas. (Presentation, invited)
- Lewis D., Brennan P.F., McCray A.T., Tuttle M., **Bachman J.A.** (2001, September). If we build it, they will come: Consumer vocabularies Medinfo2001 10th World Congress on Health and Medical Informatics. London, UK. If we build it, they will come: Consumer vocabularies. (R)
- Lewis D., Brennan P.F., McCray A.T., Tuttle M., & **Bachman J.A.** (2001, November). Representing consumers health information needs through standardized consumer health vocabularies-issues, and implementations. AMIA 2001 Annual Symposium: A Medical Informatics Odyssey: Visions of the Future and Lessons from the Past. Washington, DC. (R)
- Ruchala, P.L., Metheny, N., Essenpreis, H., & **Borcherding, K.E.** (2002, February), "Current practice in oxytocin dilution for labor induction," Southern Nursing Research Society Conference, San Antonio, Texas. (Presentation, R)
- Ruchala, P.L., Metheny, N., Essenpreis, H., & **Borcherding, K.E.** (2001, March), "Current practice in Oxytocin dilution for labor induction," Midwest Nursing Research Society Conference, Cleveland, OH. (Poster, R)
- Saunders, V.T.S., Mechanic, M., **Lee, R.K.** and Shields, N. (2003) Violence Against Women Prevention Programming: Who We Are, What We Use. Midwest Sociological Society. (Presentation, R)
- Shelton, A. & **Fish, A. F.** (2005, March). *Women's decision-making trajectory model: Seeking treatment for acute myocardial infarction.* 7th Annual University of Missouri Nursing Research Conference, Columbia, MO. (Poster)
- Taliaferro, D.** (2000). Caring: The Forgotten Myth. *Proceedings: 7th International Research Conference on Reflective Practice.* Duke University, Durham, NC.
- Taliaferro, D.** (2000). Caring: The Forgotten Myth. *Proceedings: 21st International*

- Caring Conference. Boca Raton, FL.
- Taliaferro, D.** (2001). Caring Work: Living with AIDS. *Proceedings: International Caring Conference*, Sterling, Scotland.
- Taliaferro, D.** (2000). Circadian Rhythms Deranged in HIV. *Proceedings: Southern Nursing Research Society*, Little Rock, AK.
- Taliaferro, D.** (2001). Correlates of Sleep in HIV. *Proceedings: Association for Nurses in AIDS Care*. Minneapolis, MN.
- Taliaferro, D.** (2005). The Effects of Melatonin on Sleep in HIV. *Proceeding: Sigma Theta Tau International*, Indianapolis, IN.
- Taliaferro, D.** (2001). Effects of Melatonin in HIV Patients. *Proceedings: Southern Nursing Society*. Baltimore, MD.
- Taliaferro, D.** (2005). The Effects of Melatonin on Sleep in HIV: A pilot study: *Proceedings: Southern Nursing Research Society*, Atlanta, GA
- Taliaferro, D.** (2004). Hope and Dispair in Academia. *Proceedings: International Association for Human Caring*, Montreal, CA.
- Taliaferro, D.** (2001). Hormonal and Temperature Circadianicity in AIDS. *Proceedings: UTHSCSA Research Colloquium*. San Antonio, TX
- Taliaferro, D.** (2005). Hope and Despair in Academia: Part II. *Proceedings: International Association for Human Caring*, Lake Tahoe, Nevada.
- Taliaferro, D.** (2001). Meaningful Questions and Successful Strategies for an Evolving Epidemic (Symposium). *Proceedings, Southern Nursing Research Society*. Baltimore, MD.
- Taliaferro, D.** (2004). Sleep and Quality of Life in HIV+Individuals. *Proceedings: Association for Nurses in AIDS Care*, New Orleans, LA.
- Taliaferro, D. & Wyglendowski, C.** (2005). Temperature Rhythms Change SleepCycles in HIV. *Proceedings: ANAC Research Summit*, Palm Springs, CA.
- Taliaferro, D. & DiLeo, H.** (2002). Challenges to Caring: Sleep Disturbances in HIV. *Proceedings: The International Association for Human Caring*. Boston, MA.
- Taliaferro, D. & Dileo, H.** (2002). Correlates of sleep in HIV. *Proceedings: Southern Nursing Research Conference*. San Antonio, TX.
- Taliaferro, D. DiLeo, H, & Wyglendowski, C.** (2003). Circadian Rhythms in HIV.

- Proceedings*: Sigma Theta Tau International Research Conference, St. Thomas, Virgin Islands.
- Taliaferro, D.,** DiLeo, H., & Wyglendowski, C. (2002). Circadian Rhythms in HIV. *Proceedings*: The Association for Nurses in AIDS Care. San Francisco, CA.
- Taliaferro, D.,** DiLeo, H., & Wyglendowski, C. (2003). Subjective and Objective Correlates of Sleep in HIV. *Proceedings*: The 17th Annual Meeting of the Associated Professional Sleep Societies, Chicago, IL.
- Taliaferro, D.** & Wyglendowski, C. (2003). The Effects of Melatonin on Sleep in HIV: A Pilot Study. *Proceedings*: The Association for Nurses in AIDS Care, New York City, NY.
- Taliaferro, D.** & Wyglendowski, C. (2004). Subjective and Objective Correlates of Sleep in HIV. *Proceedings*: Southern Nursing Research Society, Louisville, KY.
- Taliaferro, D.,** Wyglendowski, C., & DiLeo, H. (2003). Caring through the Voices of HIV: Symptoms of Sleep. *Proceedings*: The International Association for Human Caring, Boulder, CO.
- Wyglendowski, C., Dyson, S., & **Taliaferro, D.** (2002). Allocations of Ryan White Funds to the State of VA. *Proceedings*: The Association for Nurses in AIDS Care, San Francisco, CA.
- Wyglendowski, C. & **Taliaferro, D.** (2004). Sleep Hygiene Practices in HIV. *Proceedings*: Graduate Research Symposium, VCU, Richmond, VA.
- Wyglendowski, C. & **Taliaferro, D.** (2004). Sleep Hygiene Practices in HIV. *Proceedings*: Southern Nursing Research Society, Louisville, KY.
- Wyglendowski, C. & **Taliaferro, D.** (2003). Sleep Hygiene Practices in HIV. *Proceedings*: The Association for Nurses in AIDS Care, New York City, NY.
- Wyglendowski, C. & **Taliaferro, D.** (2005). Sleep Disturbances, Sleep Efficiency, and Cortisol Levels in HIV. *Proceedings*: ANAC Research Summit, Palm Springs, CA.

Appendix M

University of Missouri-St. Louis, Average Time To
Degree By Doctoral Program, 1997-2007

University of Missouri-St. Louis

Doctoral Student Time To Degree By Program, FY 1997-2007

Degree Program	Average of Years to Degree
APPLIED MATHEMATICS	7.0
BIOLOGY	6.4
BUSINESS ADMINISTRATION	
CHEMISTRY	5.1
CRIMINOLOGY & CRIMINAL JUSTICE	5.3
EDUCATION	6.3
NURSING	5.5
PHYSICS	4.2
PHYSIOLOGICAL OPTICS	4.6
POLITICAL SCIENCE	7.6
PSYCHOLOGY	7.1
Grand Total	6.3